

SPECIFICATIONS

Material: Boot: Neoprene.

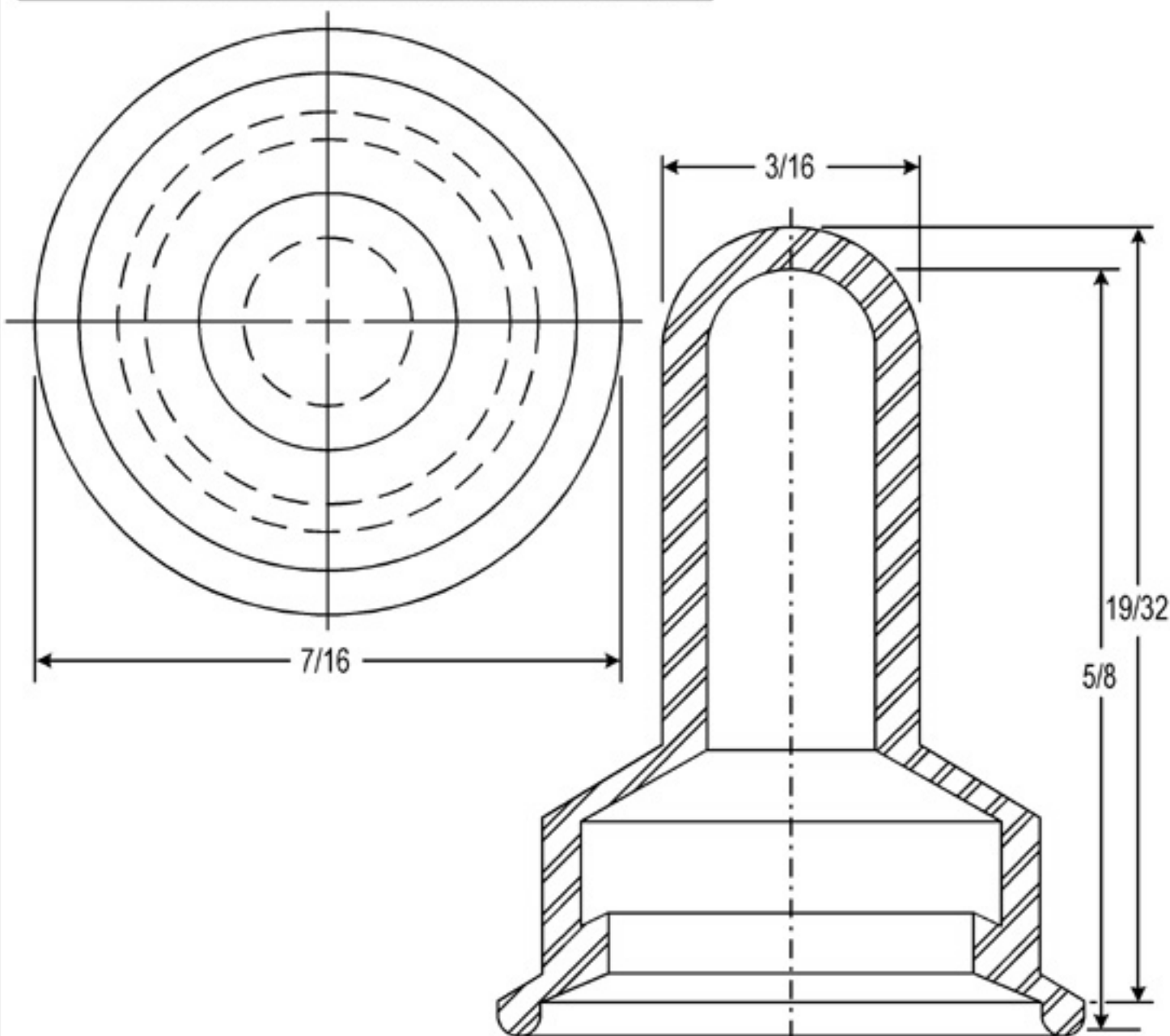
Color: black (other materials and colors available on special order.)

Temperature Range: -65°F to +300°F

Shelf Life: 2 years.

Installation: A. Mount the switch using SNAPSEEL ® shouldered mounting nut.

B. Press SNAPSEEL ® over switch actuator and snap over nut.



NOTE: MOUNTING NUT NOT INCLUDED - PURCHASE SEPARATELY IF NEEDED.

A		CAD COMPUTER GENERATED		9/23/02	
REV.		DESCRIPTION		DATE	
MAXIMUM AND MINIMUM MEASUREMENTS ARE STATED DIRECTLY ON EACH DIMENSION.		TITLE: SNAPSEEL ® FOR SUBMINIATURE TOGGLE SWITCHES (1111/9)		ENG. DWN. M.M. 10-8-86	
MAT'L: NEOPRENE		APM-HEXSEAL CORPORATION		CHKD. SCALE 10:1 DWG. NO. 1111/9	
FINISH: BLACK					

THIS DRAWING COVERS PROPRIETARY ITEM AND IS THE PROPERTY OF THE APM-HEXSEAL CORPORATION. THIS DRAWING IS NOT TO BE COPIED OR USED WITHOUT THE WRITTEN APPROVAL OF AN OFFICER OF THE APM-HEXSEAL CORPORATION.

Mouser Electronics

Authorized Distributor

Click to View Pricing, Inventory, Delivery & Lifecycle Information:

[APM HEXSEAL:](#)

[1111/9](#)