

Copper Solutions
PowerCat™ 6 UTP



Molex's Category 6 Product Range, PowerCat™ 6, is designed to meet or exceed the requirements of: TIA/EIA 568B 2.1, ISO/IEC 11801:2002, EN 50173:2002 and has been independently tested and verified by ETL SEMKO for Category 6 component compliance.

Molex's Category 6 Product Range features the RJ45 connector, DataGate Plus™. This superior connector features a unique integral shutter that not only protects the connector from dust and contaminants, but the ingenious spring-loaded design also ejects improperly seated patch cords.

PowerCat 6 U/UTP Cable

PowerCat™ 6 4 pair cable has been designed to support high-speed data transmission systems. The cable features a cross-member designed to keep individual pairs separated for the reduction of NEXT and ELFEXT. The cable is available in PVC and LSZH sheaths on 500m reels and 305m reel in a box.

- Unshielded 4 Pair PVC and LSZH Cable
- Central separator for the reduction of NEXT & ELFEXT
- Colour coded pairs for ease of termination
- Independently tested
- 500m reel and 305m reel in a box

Table with 2 columns: Order No., Description. Rows include 4 Pair Cable PVC U/UTP C6 - 305m Reel in a Box, 4 Pair Cable LSZH IEC 332.1 U/UTP C6 - 305m Reel in a Box, 4 Pair Cable PVC U/UTP C6 - 500m Reel, 4 Pair Cable LSZH IEC 332.1 U/UTP C6 - 500m Reel.



PowerCat 6 UTP Patch Cords

PowerCat™ 6 patch cords are manufactured using high quality unshielded four pair Category 6 stranded cable. Available in a range of colours and lengths, PowerCat 6 patch cords are pre-terminated with RJ45 plugs and feature cable strain relief boots with a plug latch protection cap. The slim boot design provides an effective solution to the problem of patch cord congestion in high density 1U active equipment. Ideal for hubs/switches where space between individual RJ45 jacks is limited.

- Unshielded 4 pair stranded cable
- Slim Boot Design
- PVC or LSZH sheath
- Suitable for high density active equipment with limited space between individual RJ45 jacks
- Available in 5 colours to facilitate improved wiring closet manageability
- Suitable for EIA 568A/B applications
- Various cable lengths available upon application

Table with 3 columns: PVC Sheath, LSZH Sheath, Description. Rows list various patch cord part numbers and their descriptions, including lengths from 0.5m to 20m.

* Colour Options - OC = Red, OE = Grey, OH = Blue, OJ = Green, OK = Yellow, OP = Purple, ON = Orange, BK = Black



Copper Solutions
PowerCat™ 6 UTP



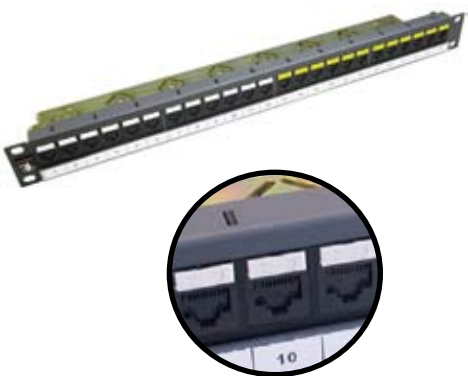
PowerCat 6 Patch Panels

PowerCat™ 6 Patch Panels feature the shuttered DataGate Plus™ Connector which is dual colour coded for either 568A or 568B wiring. The panels come complete with an integral cable management tray for cable strain relief and tidy cable dressing. Available in 24 or 48 port versions, with front and rear port labelling. Individual ports can be colour coded using an icon for site-specific network administration.

- Shuttered DataGate Plus RJ45
- 24 Port 1U, 48 Port 2U
- EIA 568A/B colour coded
- Integral rear cable management tray
- Standard 19" rack mount
- Graphite grey finish

Table with 2 columns: Order No., Description. Rows include 24 Port Patch Panel RJ45 568A/B UTP C6 - 1U, 48 Port Patch Panel RJ45 568A/B UTP C6 - 2U, 24 Port Patch Panel for Pre-Termination, and Accessories (Blank Connector Icon Labels, Data Connector Icon Labels, Voice Connector Icon Labels).

** Colour Options - 01 = Almond, 02 = White, 04 = Black, 08 = Light Grey, RD = Red, BL = Blue, GR = Green, YL = Yellow, RG = Orange, PP = Purple



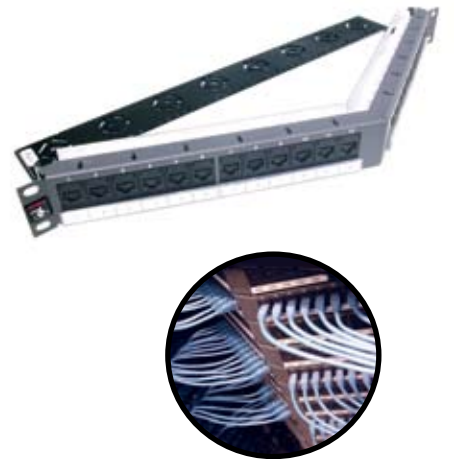
PowerCat 6 Angled Patch Panels

Angled Patch Panels are ideal for installations of high density or which utilise extensive side and end-of-the-rack cable management. The angled feature provides enhanced port access and minimises patch cord bend radius to the rack. Each port features a patented spring-loaded shutter and can be colour coded using an icon for site specific network administration. The panel provides both front and rear port number identification.

- Shuttered DataGate Plus RJ45
- 24 Ports 1U & 48 Port 2U
- Category 6 performance
- EIA 568A/B wired
- Standard 19" rack mount
- Individually removable patch panel ports
- Integral cable management

Table with 2 columns: PowerCat 6, Description. Rows include 24 Port Angled Patch Panel RJ45 568A/B UTP C6 - 1U, 48 Port Angled Patch Panel RJ45 568A/B UTP C6 - 2U.

For Connector Icon Labels see above



PowerCat 6 Keystone Patch Panel

The Molex 24 Port Modular Keystone Jack patch panel is a flexible patching solution for small to medium size installations. The panel is shipped unloaded and can be configured to provide the exact number of ports required. The Keystone Jacks snap in easily and can be removed if required.

- Available in 24 Ports, 1U
- Modularity provides installation flexibility
- Easy snap in Keystone Jacks
- Rear cable management included
- Graphite grey finish

Table with 2 columns: Order No., Description. Rows include 24 Port Keystone Patch Panel - 1U, Keystone Jack 568A/B UTP C6, Keystone Jack 568A/B UTP C5E.

** Colour Options - 10=Almond, 02=White, 04=Black, 05=Light Grey, RD=Red, BL=Blue, GR=Green, YL=Yellow, RG=Orange, PP=Purple. Note: Colours other than black and white are subject to lead times and MOQ's.

