

6

5

4

3

2

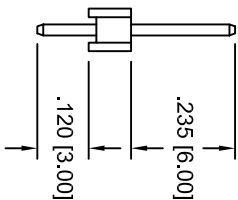
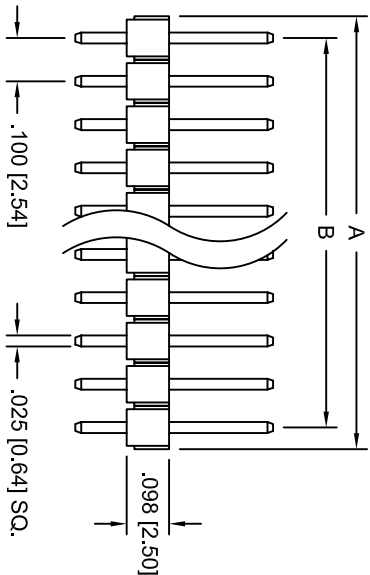
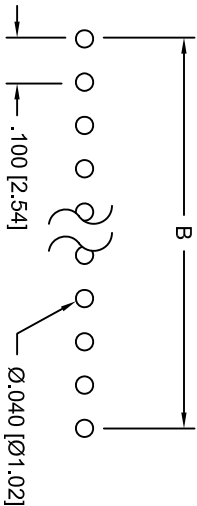
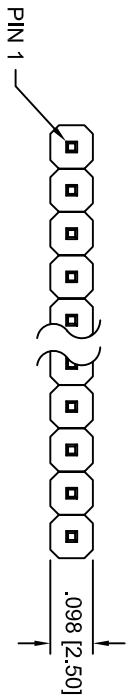
1

Rev	AWO #	Description	Date	Appr
-		RELEASED	10/5/04	

APPROVED: _____

DATE: _____ TITLE: _____

PCB LAYOUT



SPECIFICATIONS:

Material:

Insulator: PBT, rated UL 94V-0

Insulator color: Black

Contacts: Brass

Plating:

Tin over Copper underplate overall

Electrical:

Operating voltage: 250 VAC max

Current rating: 3 Amps max

Insulation resistance: 5000 Mohms min @ 500 VDC

Dielectric withstanding voltage: 1000 VAC for 1 minute

Temperature Rating:

Operating temperature: -55°C to +105°C

Environmental:

Lead free, RoHS compliant.

Recommended soldering temp: 235 for 5 sec.



A = .100 [2.54] X No. of Positions.
B = .100 [2.54] X No. of Spaces.
1 THRU 40 PINS AVAILABLE

ADAM TECH

909 Rahway Avenue, Union, NJ 07083

Phone: 908-687-5000 Fax: 908-687-5710

PIN HEADER, SINGLE ROW, .100 PITCH

STRAIGHT, .235 MATING / .120 TAIL

UNLESS OTHERWISE SPECIFIED ALL DIMENSIONS ARE INCHES [MM] TOLERANCES: EXCEPT AS NOTED				TITLE			
INCHES				Holes			
.X	± .10	ØX	± .10	.X	± .10	ØX	± .10
.XX	± .020	ØXX	± .015	.XX	± .020	ØXX	± .015
.XXX	± .015	ØXXX	± .010	.XXX	± .015	ØXXX	± .010
APPROVALS				DATE			
DRAWN	SS	10/5/04		SIZE	PART NO.	REV.	
CHECKED				X	PH1-XX-TA	-	
APPROVED				REF:	SCALE: NTS	SHEET 1 OF 1	