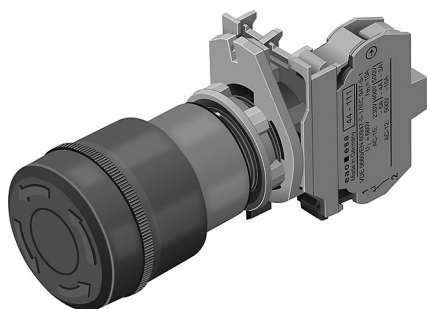


# EAO – Your Expert Partner for Human Machine Interfaces

## 44-712 - Emergency-stop switch actuator, foolproof EN IEC 60947-5-5

### 44-712 - Emergency-stop switch actuator, foolproof EN IEC 60947-5-5



*Attention: The preview is based on a sample product. This can differ from your current configuration.*

#### Mounting

Mounting cut-out	Ø 22.5 mm
Design	raised

#### Front

Front shape	round
Front dimension	Ø 37 mm

#### Other Attributes

Weight	0.040 kg
--------	----------

#### Operating-/Indication part

Lens optics	opaque
Lens material	Plastic
Lens colour	red
Lens profile	Mushroom
Lens illumination	non-illuminative

#### IP-Rating

Front protection	IP 65
------------------	-------

#### Actuator

Switching action	Maintained
------------------	------------

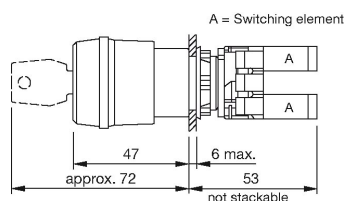
#### Function

Emergency stop switch
-----------------------

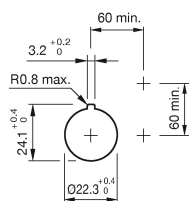
# EAO – Your Expert Partner for Human Machine Interfaces

44-712 - Emergency-stop switch actuator, foolproof EN IEC 60947-5-5

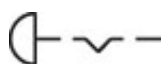
## Dimensions



## Mounting cut-outs



## Wiring diagram



## Additional information

Application as per DIN EN ISO 13850 and EN 60204-1

Shaft yellow

Twist to unlock anti-clockwise

Up to 3 switching elements at 1. level

## Legend

Switching action: C = Maintained