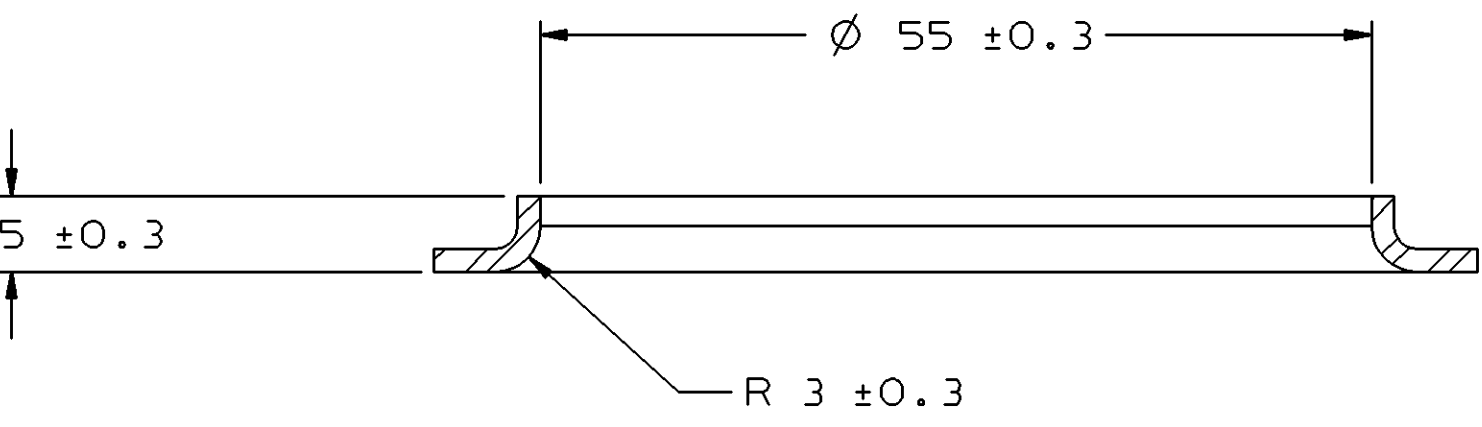
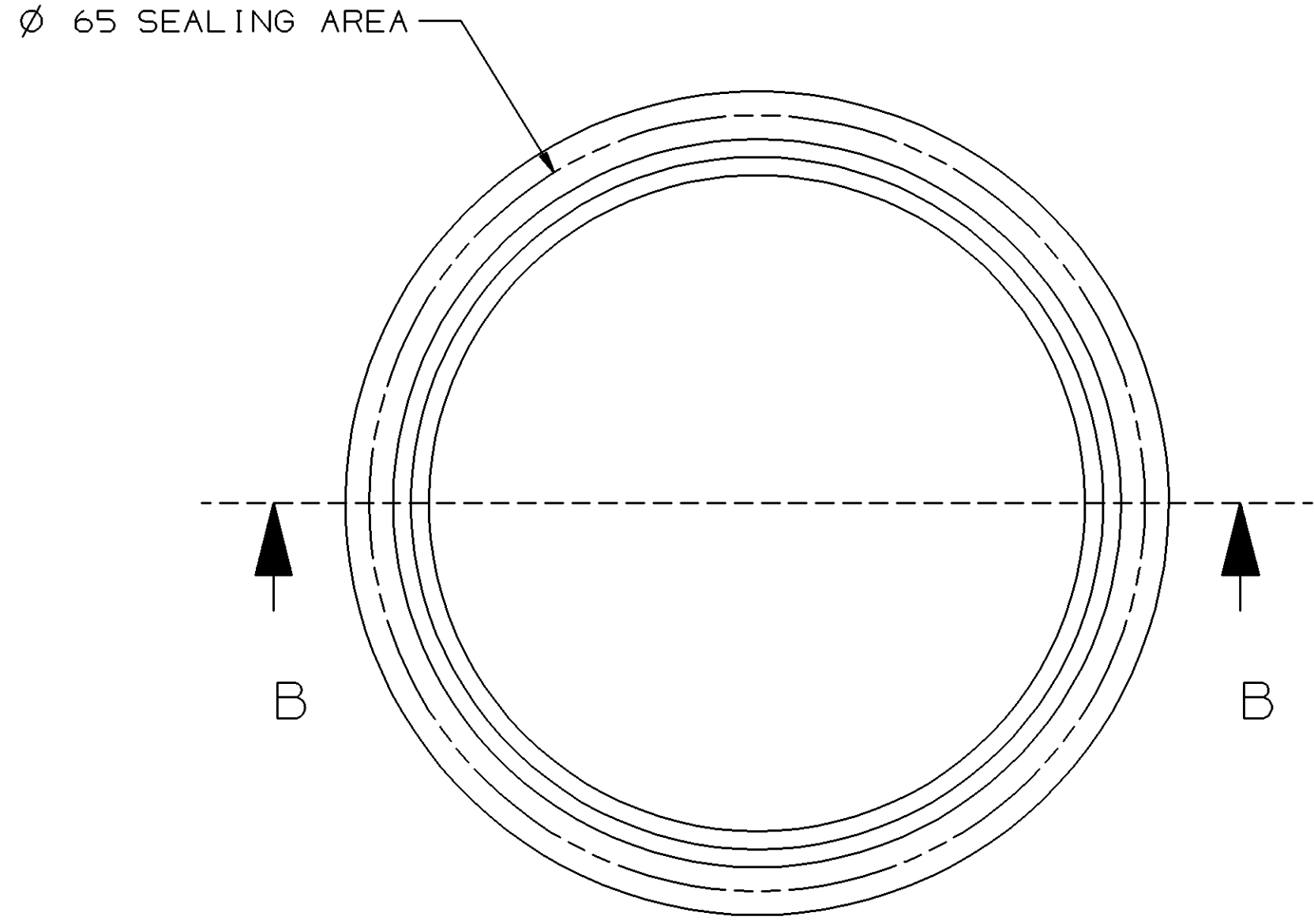
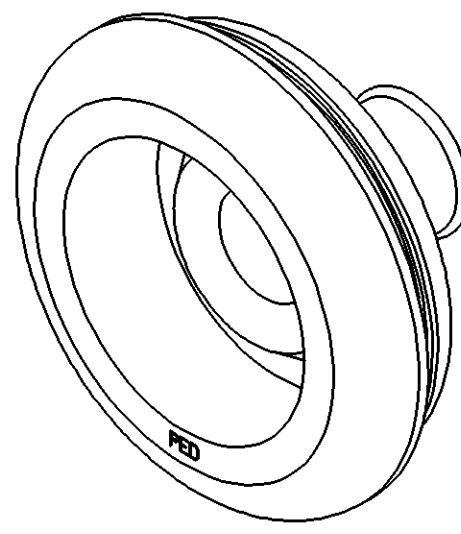
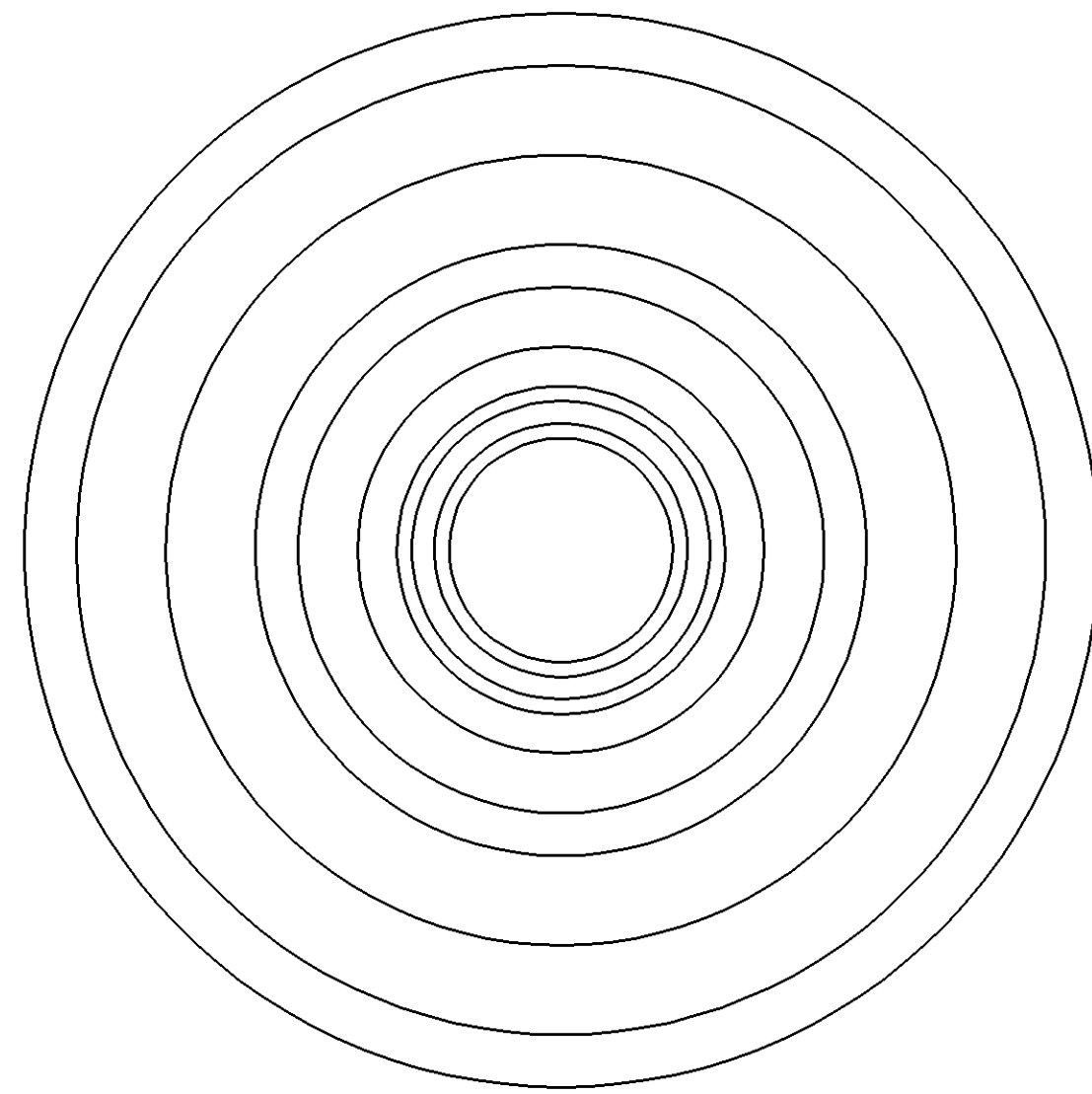
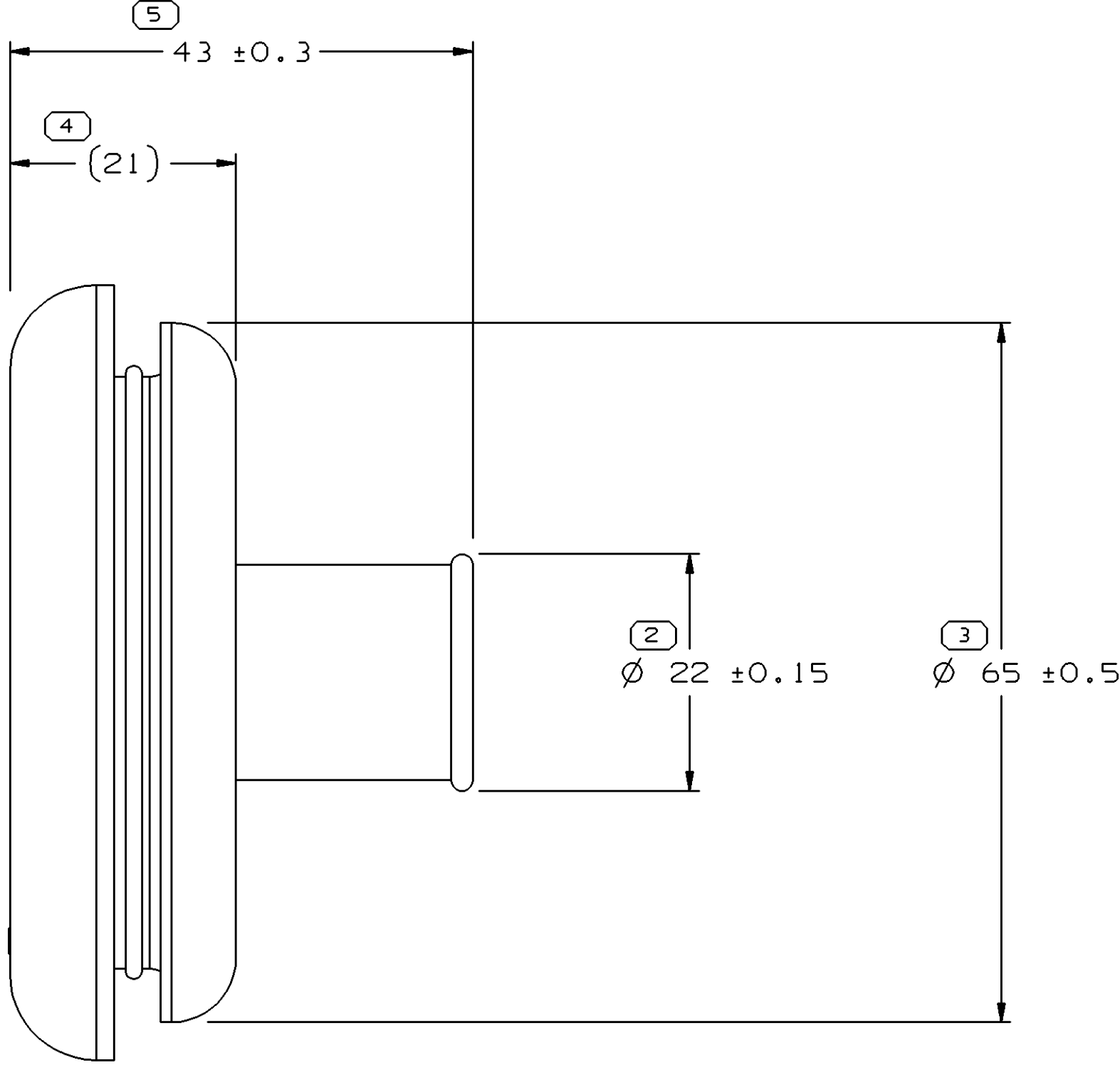
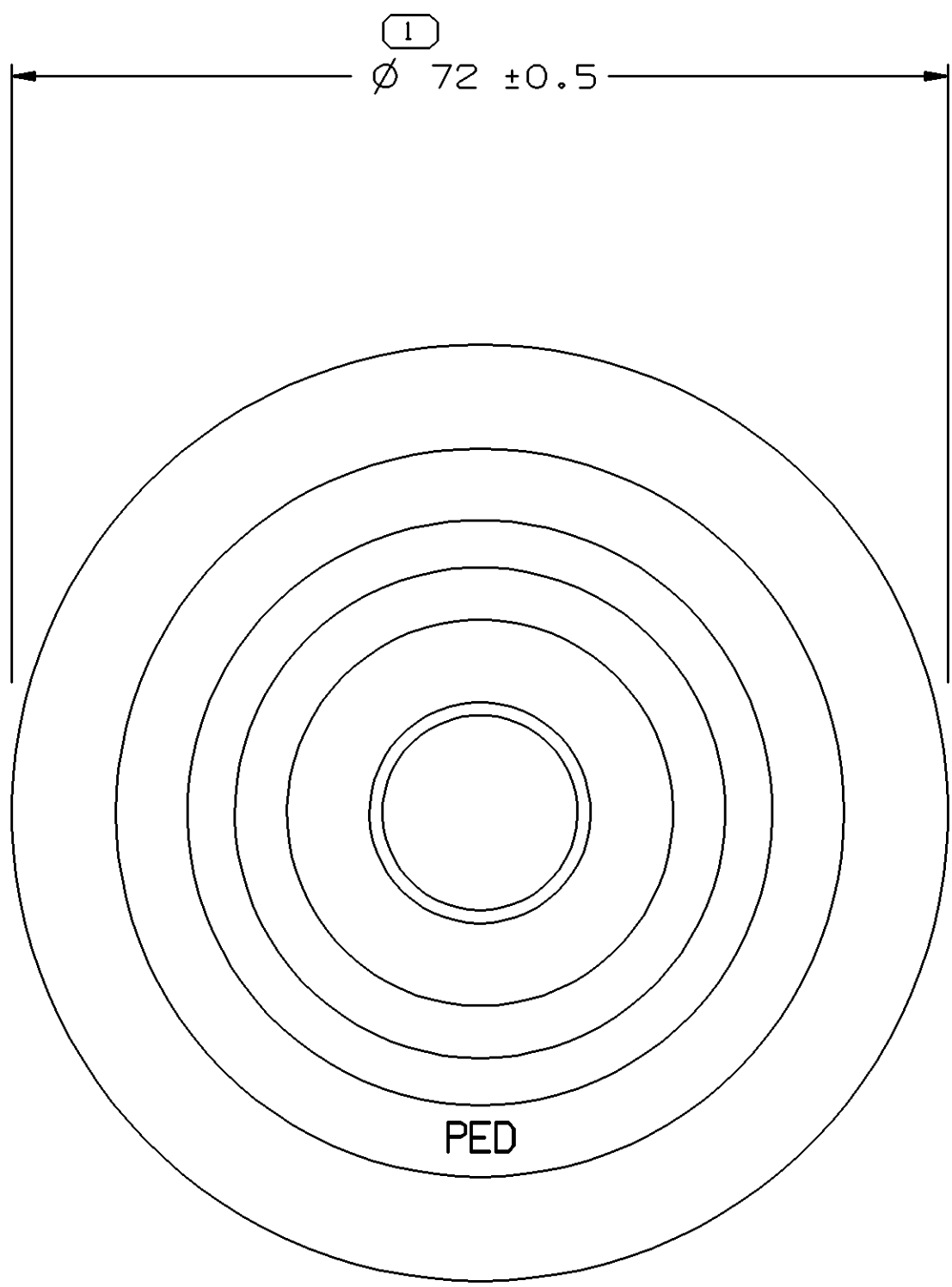
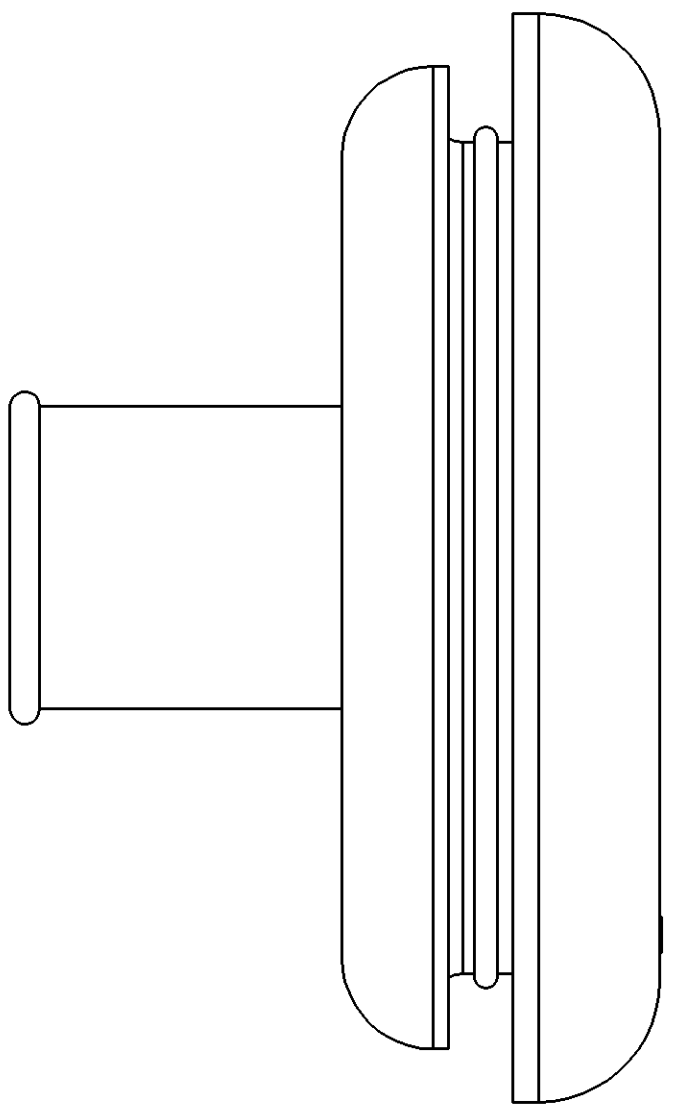
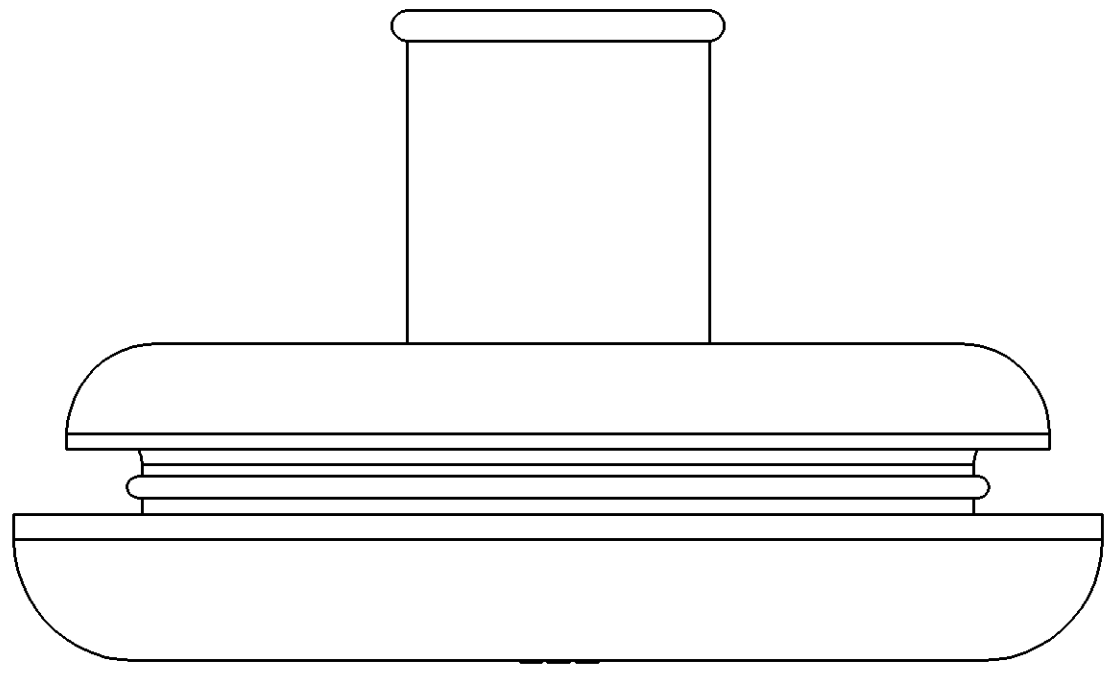


SYMBOL DEFINITION		MISSING SYMBOLS	
A DIMENSION WITHOUT AN INSPECTION REPORT SYMBOL DOES NOT REQUIRE INSPECTION. IT MAY BE CONTROLLED ON THE INDIVIDUAL COMPONENT DRAWING.	TOTAL NO OF INSPECTIONS REQUIRED	NO MISSING SYMBOL NUMBER	
	LAST NO. USED		
	5		
	5		

DWO STATUS					REVISION HISTORY					AUTH	DR	APVD	APVD
VOLUME	STG	REV	N/P	CHG	ZONE								
08FE05	R	B5	-	-		Cleared Rev Column & Redrawn to PD					264552	ADK	J5

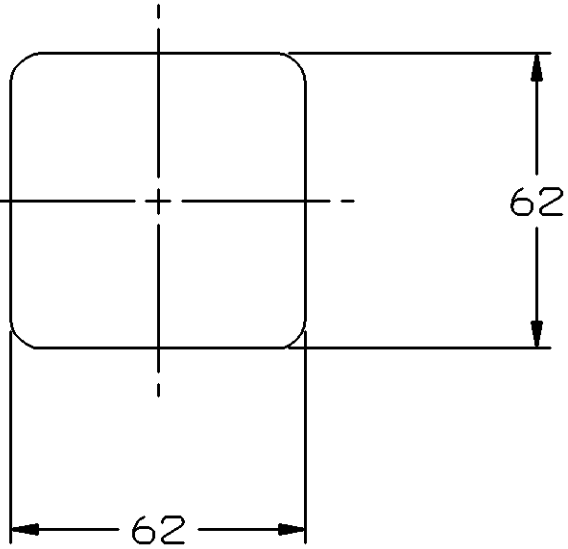


SECTION B-B
MOUNTING HOLE INFORMATION
SCALE 2:1



- NOTES:
- UNLESS OTHERWISE SPECIFIED AND/OR INDICATED: DIMENSIONS ARE TO FACE OF VIEW SHOWN AND AUTOMATICALLY ROUNDED BY COMPUTER FOR INSPECTION. (SEE MATH MODEL FOR PRECISE DIMENSION) FOR ALL OTHER DIMENSIONS NOT SHOWN BUT REQUIRED FOR TOOL BUILD, SEE MATH MODEL FOR PRECISE TOOL PATH DATA.
 - THIS GROMMET TO BE USED WITH HARNESS BUNDLE SMOOTH TAPE WRAPPED USING 5 MIL TAPE HAVING NO SLITS ON EDGES.
 - PART IS SYMMETRICAL ABOUT CENTERLINE, EXCEPT AS NOTED.
 - REFERENCE SUMITOMO PART NUMBER 8281 9-01070.
 - THIS PART IS NOT CONTROLLED FOR AUTOMATIC FEEDING.
 - (2.31X(0.1) DELPHI CORPORATE BRAND TO BE LOCATED ON ANY EXTERIOR SURFACE, PREFERABLY VISIBLE AT FINAL ASSEMBLY. OPTIONAL CONSTRUCTION TO BE "PED".

MAXIMUM ALLOWABLE
DIMENSION OF STRETCHED
GROMMET NECK WHEN USING
A 4 BILL SPREADER



PART DRAWING	
STYLE	
VOLUME (CWP)	39.822
DISTR CODE	D

UNLESS OTHERWISE SPECIFIED
THIS DOCUMENT IS IN ACCORDANCE WITH ASME Y14.5M-1994
AS AMENDED BY THE 2018 ASME DIMENSIONING AND
TOLERANCING ADDENDUM - 1997. ALL GEOMETRIC TOLERANCES
AND RELATED DATUMS APPLY. IF PERFECT FORM IS
REQUIRED, THE RELATIONSHIP BETWEEN FEATURES
IS ESTABLISHED BY ORIENTATION OR LOCATION TOLERANCES.
SEPARATE POSITION CALLOUTS MAY BE USED SEPARATELY.
REGARDLESS OF DATUM REFERENCE.
ALL DIMENSIONS ARE IN MILLIMETERS.

PROCESS SENSITIVE DIMENSION		REFERENCE	
DIMENSIONS ENCLOSED IN () INDICATE REFERENCE DIMENSIONS AND NO TOLERANCE LIMITS ARE ESTABLISHED		12045255	
DIMENSIONAL RANGE (MM)	CHART C	THIRD ANGLE PROJECTION	DO NOT SCALE
FROM	> 5		
TO	> 25		
	> 60		
	> 80		
TOLERANCE UNLESS OTHERWISE SPECIFIED		USE MATH DATA	
	±0.3		
	±0.5		
	±0.6		
	±0.75		
ANGULAR TOLERANCE ±2°			

DELPHI	
DELPHI PACKARD ELECTRIC SYSTEMS WARREN, OH	
DR	DATE
APVD1 RON BALDWIN	21MY87
APVD2 F. HESTON	29MY87
APVD3 K. GRZENA	08JN87
APVD4	
APVD5	
SUBSTANCES OF CONCERN AND RECYCLED CONTENT PER DELPHI 10949001	
MATERIAL M4433002	
DRAWING NAME GROM TAPE ON	
DRAWING NUMBER 12066591	
SIZE A0	SCALE 2:1
FRAME NO 1	SHEET NO 1 OF 1
STG R	N/P B5

Mouser Electronics

Authorized Distributor

Click to View Pricing, Inventory, Delivery & Lifecycle Information:

[Delphi Connection Systems:](#)

[12066591](#)