

EMC Components

EMC Filters for AC Power Supply Cased (3-Phase, Large Size)

ZACT-ME Series

FEATURES

- While reducing the filter size, the highly efficient thermal design allows the handling of large currents with high attenuation.
- Effectively prevents both incoming and outgoing noise.
- For the frequency band set by CISPR, attenuation is shown for both differential mode and common mode noise components.
- Can withstand voltages of AC.1250V between the lines, and AC. 2000V between the line to ground.

APPLICATIONS

Computers, HDDs, electronic exchange devices, NC control devices, inverters for motor, etc.

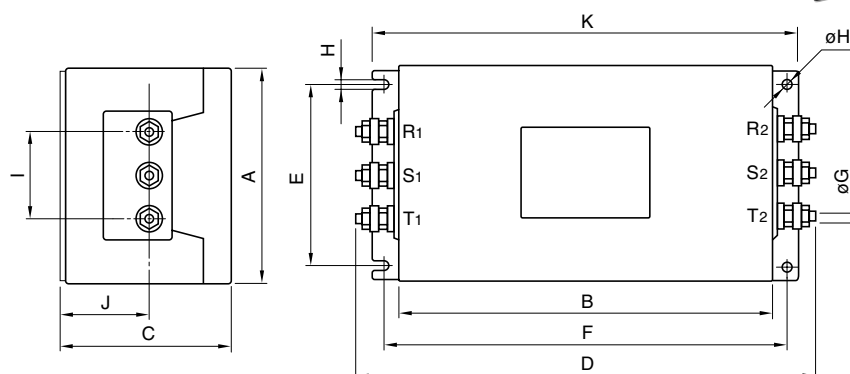
SAFETY STANDARDS

Part No.	UL	CSA	TÜV
ZACT2230-ME		LR76849C	R9551925
ZACT2250-ME		LR76849C	*1
ZACT2280-ME	E62388	LR76849C	*2

Technical report *1J9650161 *2J9551873



SHAPES AND DIMENSIONS



Dimensions in mm

Part No.	A	B	C	D	E	F	øG	H	I	J	K
ZACT2230-ME	120	200	115	260	100	220	M6	5.5	64	66	240
ZACT2250-ME	210	310	135	380	180	340	M6	5.5	80	55	360
ZACT2280-ME	210	350	160	420	180	380	M8	5.5	80	80	400

• Case: metal, terminal: stud

ELECTRICAL CHARACTERISTICS

Part No.	ZACT2230-ME	ZACT2250-ME	ZACT2280-ME
Rated voltage Eac(V)	250	250	250
Rated current(A)	30	50	80
Test voltage Eac(V)[Between terminal and case]	2000	2000	2000
Insulation resistance(MΩ) [DC. 500V, 1 min/between terminal and case]	100min.	100min.	100min.
Leakage current(mA)[250V • 60Hz]	1max.	1max.	1.2max.
DC resistance(mΩ)	40max.	15max.	7max.
Operating temperature range(°C)[Including self-temperature rise]	-25 to +85	-10 to +85	-10 to +85
With derating over(°C)	45	45	45
Temperature rise(°C)	35max.	35max.	35max.
Attenuation frequency range (MHz)[+5 to +35°C]	Differential mode at 40dB 0.2 to 10 Common mode at 40dB 0.2 to 10	0.15 to 10 0.2 to 10	0.15 to 10 0.15 to 10
Weight(kg)	5	15	22

EMC Components

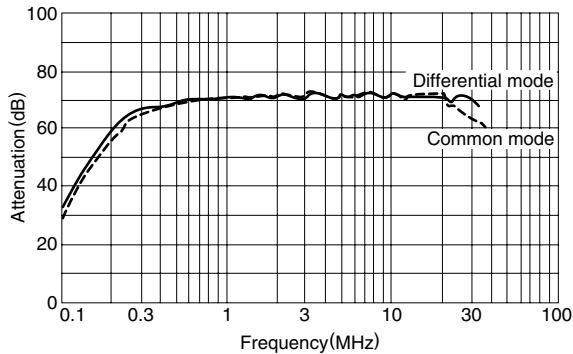
EMC Filters for AC Power Supply Cased (3-Phase, Large Size)

ZACT-ME Series

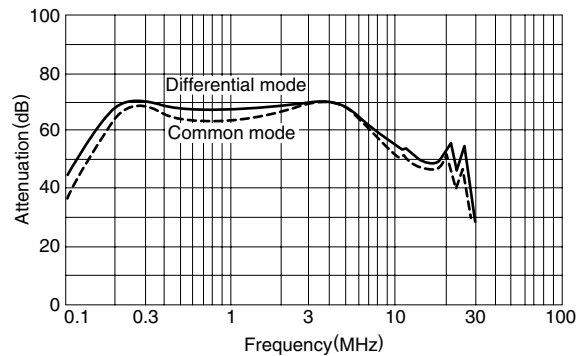
TYPICAL ELECTRICAL CHARACTERISTICS

ATTENUATION vs. FREQUENCY CHARACTERISTICS

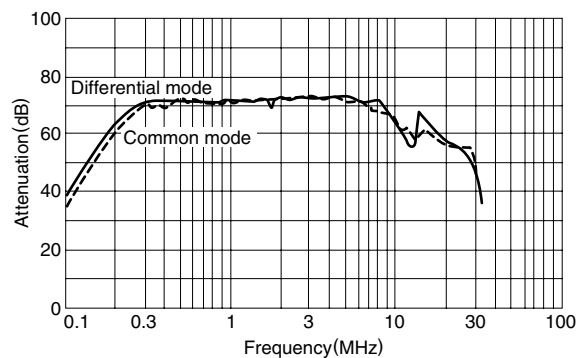
ZACT2230-ME



ZACT2280-ME

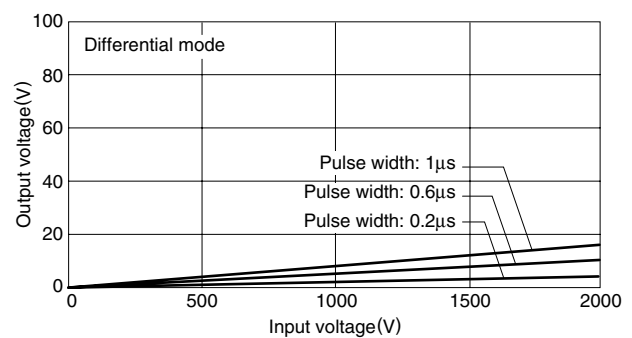


ZACT2250-ME

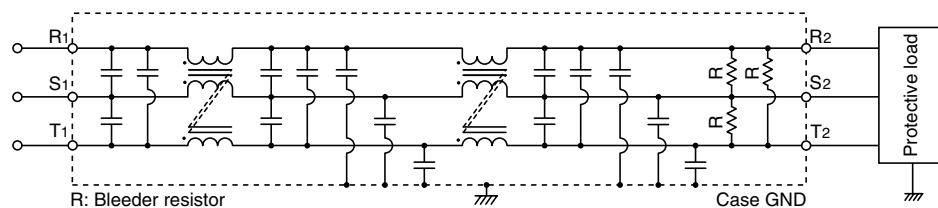


PULSE ATTENUATION CHARACTERISTICS

ZACT2280-ME



CIRCUIT DIAGRAM



CAUTIONS

- When there is a danger of a high energy pulse voltage (over 2kV for over 1μs), use a surge absorbing element such as a varistor, or arrester on the EMC filter power supply input side.
- TDK also offers a product with the capacitor between the lines and the fuse installed in series.