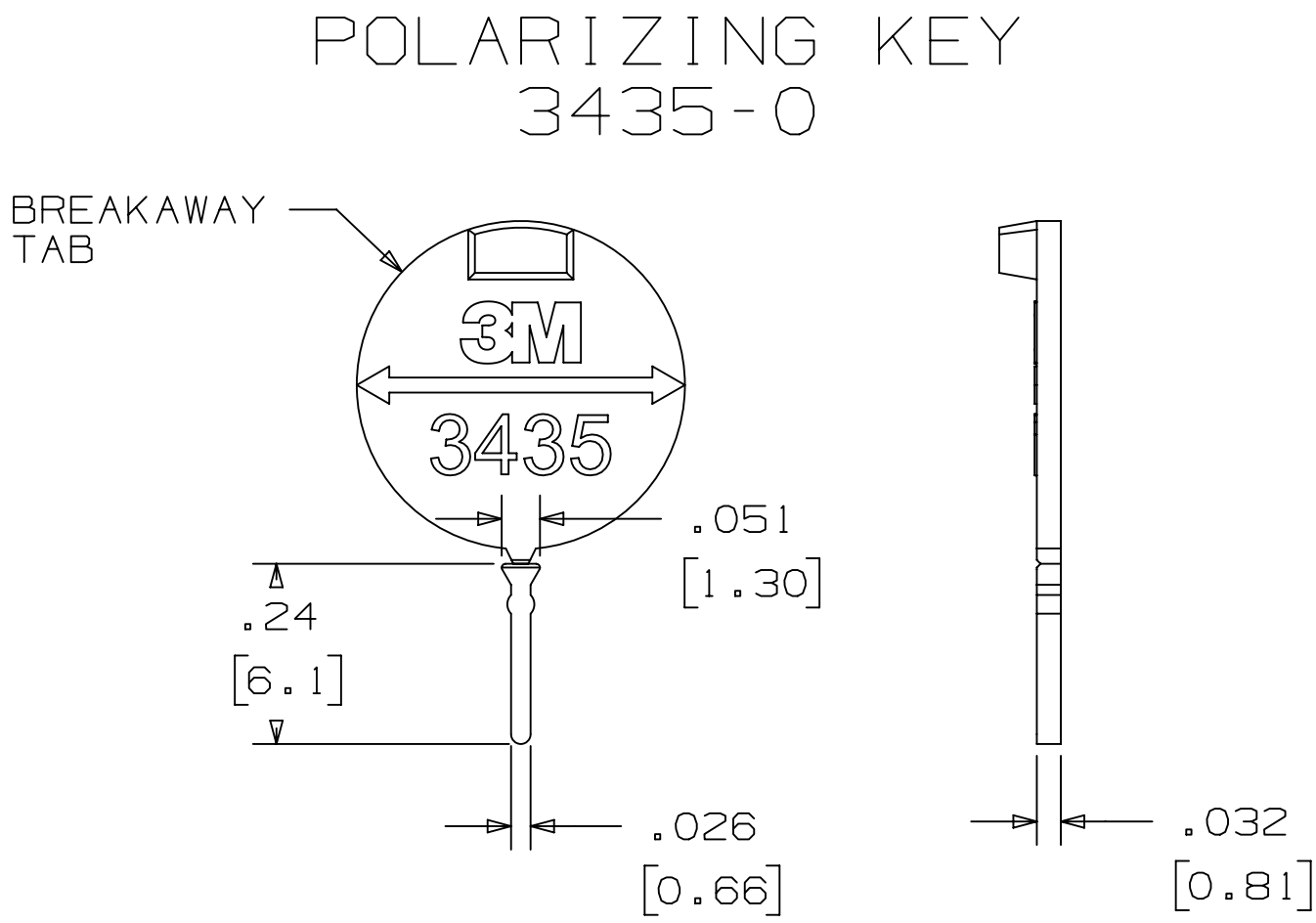


3M™ ACCESSORIES

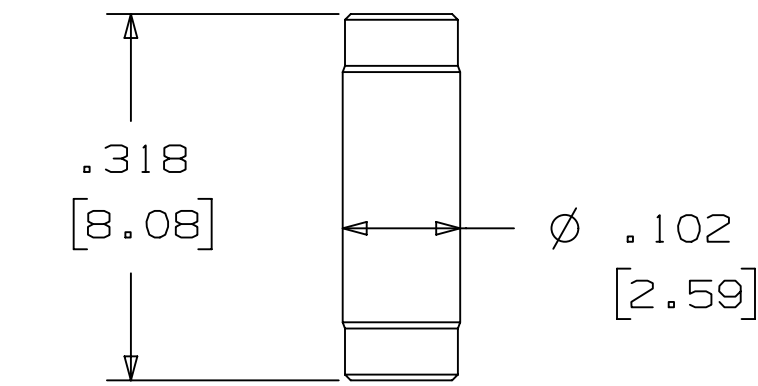
.100" X .100" WIREMOUNT SOCKET AND HEADER

1. REGULATORY INFORMATION:
VISIT 3M.com/regs



NOTE:
1) MATERIAL: POLYESTER, GRAY (PET)

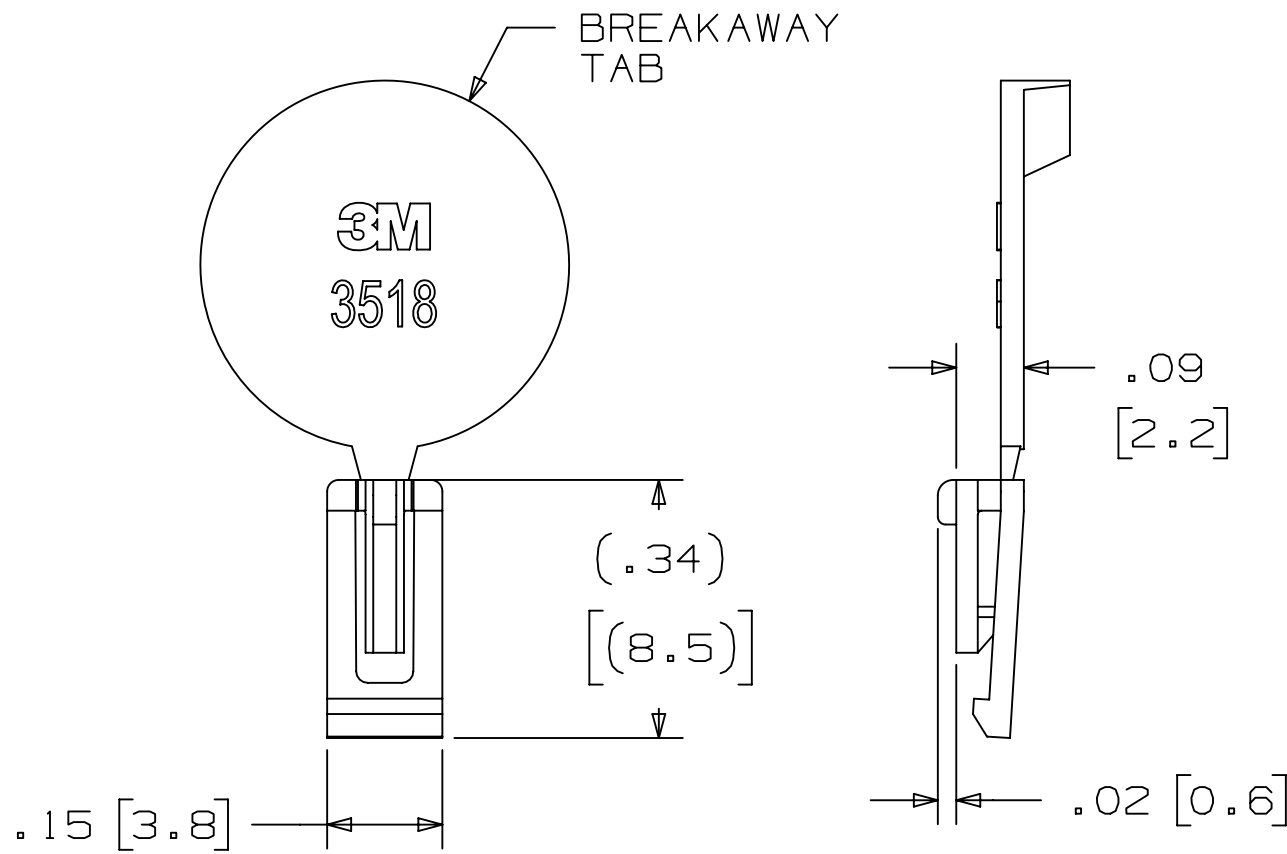
POLARIZING POST
3201



3M PART NO.	MATERIAL	COLOR
3201-4	PET	BLACK
3201-5	PET	GRAY

NOTE:
1) INSERT POST INTO ONE MOUNTING
HARDWARE HOLE ON BOTTOM OF HEADER.
SET POST TO PROTRUDE .115 [2.92]

POLARIZING KEY
3518

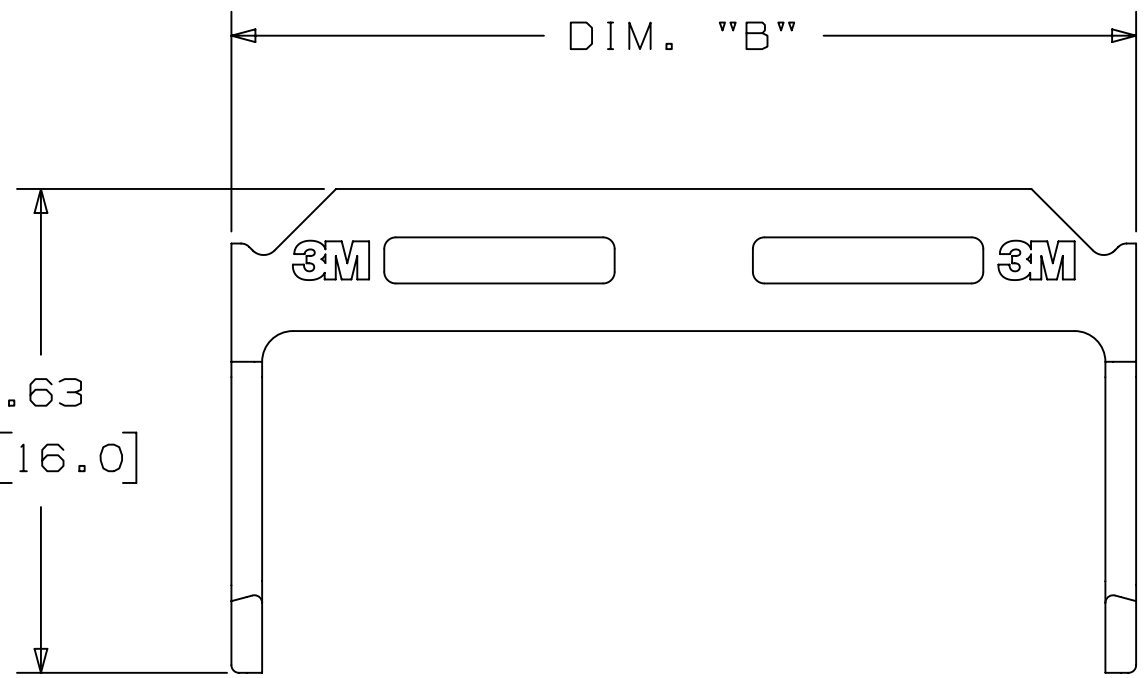


3M PART NO.	MATERIAL	COLOR
3518	PBT	GRAY
N3518	LCP	BLACK

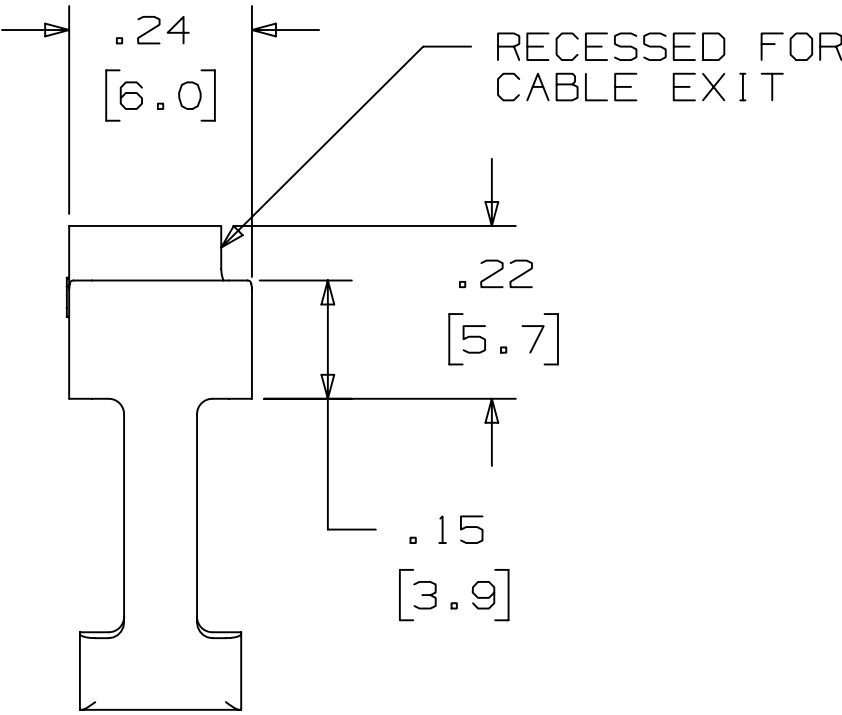
NOTE:
1) #2216 B/A SCOTCHWELD CAN BE USED TO
ADHERE KEYS.

ORDERING INFORMATION
3448-XXXX

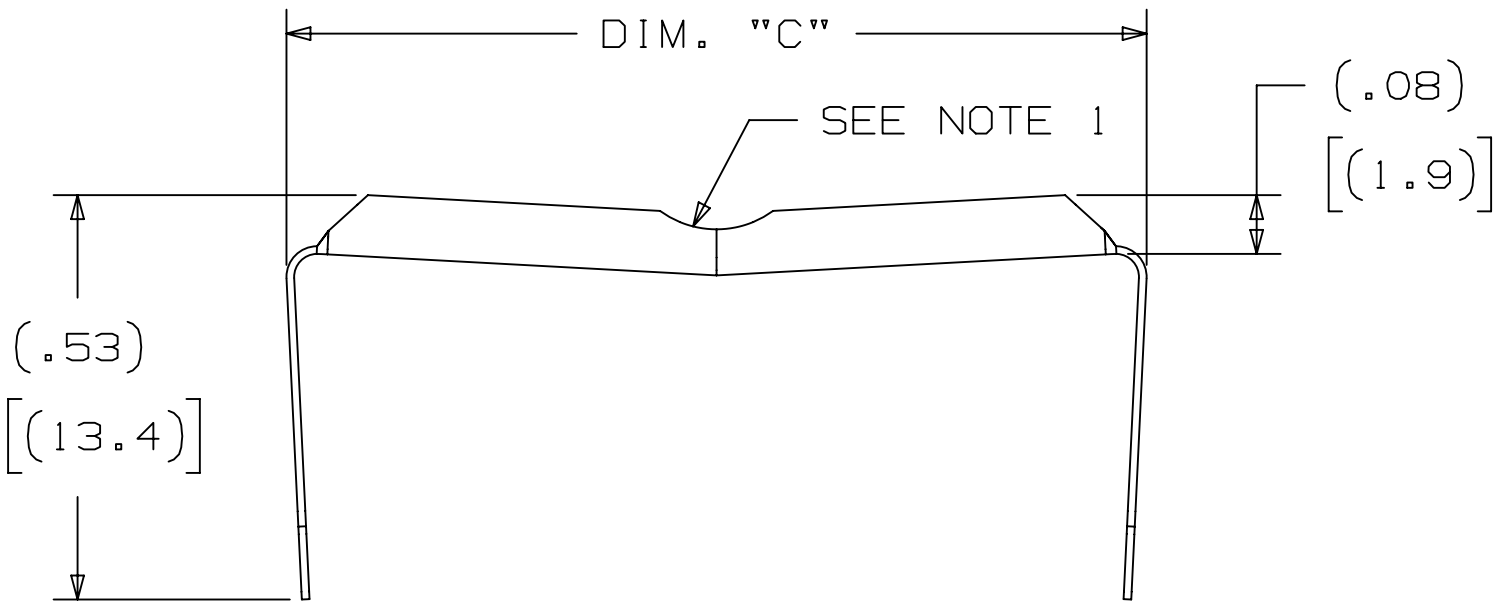
TYPE: _____ XX = CONTACT QUANTITY
2 = METAL OF SOCKET;
10-60 POSITION (I.E. 50 FOR
3 = PLASTIC 50 POSITION
STRAIN RELIEF)



PLASTIC
1) MATERIAL: POLYESTER, GRAY (PET)



STRAIN RELIEF 3448		
CONTACT QTY.	DIM. "B"	DIM. "C"
06	0.48 [12.2]	N/A
08	0.58 [14.7]	N/A
10	0.68 [17.3]	0.62 [15.7]
14	0.88 [22.4]	0.82 [20.8]
16	0.98 [24.9]	0.92 [23.4]
20	1.18 [30.0]	1.12 [28.4]
24	1.38 [35.1]	1.32 [33.5]
26	1.48 [37.6]	1.42 [36.1]
30	1.68 [42.7]	1.62 [41.1]
34	1.88 [47.8]	1.82 [46.2]
36	1.98 [50.3]	1.92 [48.8]
40	2.18 [55.4]	2.12 [53.8]
44	2.38 [60.5]	2.32 [58.9]
50	2.68 [68.1]	2.62 [66.5]
60	3.18 [80.8]	3.12 [79.2]



NOTE:
1) THE NOTCH IS NOT REQUIRED
ON 26 POSITION AND LARGER.
2) MATERIAL: STAINLESS STEEL
PASIVATED

DIMENSIONS: INCHES [MM]
[MM] IS FOR REF. ONLY

DESIGN REFERENCE		NEXT ASSEMBLY	
DESIGN CODES		DESIGN CODES	
DIVISION		DIVISION CODE	
DO NOT SCALE DRAWING	SCALE	TOLERANCES EXCEPT AS NOTED	
THIRD ANGLE PROJECTION		INTERPRET PER ASME Y14.5 - 2018	
MAX. SURFACE ROUGHNESS		ALL SURFACES	
MARKED ONLY		ANGLES	

F	106900	SEP 15,2022 REVISED AND REDRAWN	JNC	FJR
E	46446	MAY 13,2013 CORRECT CODE FOR 3201 POST	SJS	ARM
D	34670	JUN 21,2012 ADD REF TO OTHER TS	SJS	ARM
C	32294	APR 06,2011 ADD 6P AND 8P	SBO	SAN
B	21878	MAR 06,2009 ADD 3490-10	SJS	RKR
A	AT2103	APR 23,2007 MIGRATED FROM OLD SYSTEM AND FIX ERRORS	ESD	ESD
REV	ECO	ISSUE DATE AND DESCRIPTION	DRFT	CHKD
DRFT	CASTIGLIONE	DATE SEP 14,2022	DATE	
CHKD		DATE	DATE	
		APPRV. F. RODRIGUEZ	DATE SEP 14,2022	
DIVISION		3M Center St. Paul, MN 55144		
DO NOT SCALE DRAWING		© 3M COPYRIGHT 2022 This document and the information it contains are 3M property and may not be reproduced or further distributed without 3M permission, or used or disclosed other than for 3M authorized purposes. All rights reserved.		
THIRD ANGLE PROJECTION		TITLE 3M ACCESSORIES, WMT, .100" X .100" SOCKET AND HEADER		
MAX. SURFACE ROUGHNESS		CAGE NUMBER D78-5100-0720-2		
MARKED ONLY		MODEL 3000 2500 1M		
		LISTS YES NO SHT 1 OF 3		

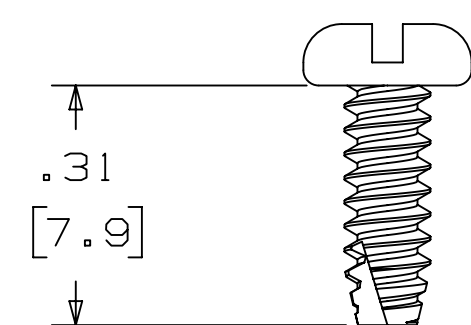
3M ELECTRONICS MATERIALS SOLUTIONS DIVISION
INTERCONNECT SOLUTIONS
<http://www.3M.com/interconnect>

3M IS A TRADEMARK OF 3M COMPANY.
FOR TECHNICAL, SALES OR ORDERING
INFORMATION CALL 800-225-5373

3M™ ACCESSORIES

.100" X .100" WIREMOUNT SOCKET AND HEADER

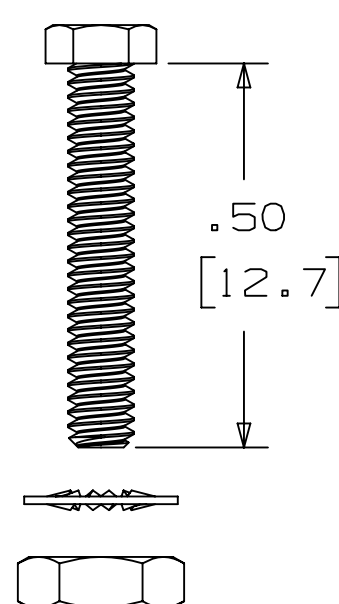
MOUNTING HARDWARE 3000 SERIES



3341-5

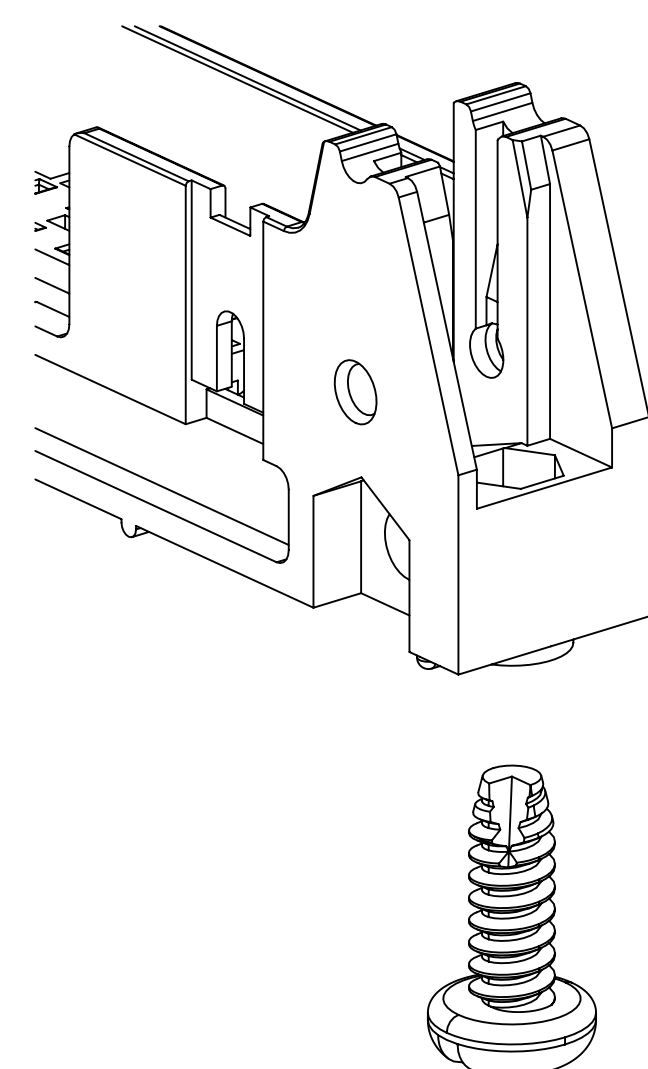
(INSTALL FROM BOTTOM OF BOARD)
SEE NOTE 1

PANHEAD THREAD CUTTING SCREW:
#4-24 X 5/16"
TYPE: USA STD BT, FEDERAL BG
MATERIAL: STAINLESS STEEL



3341-6

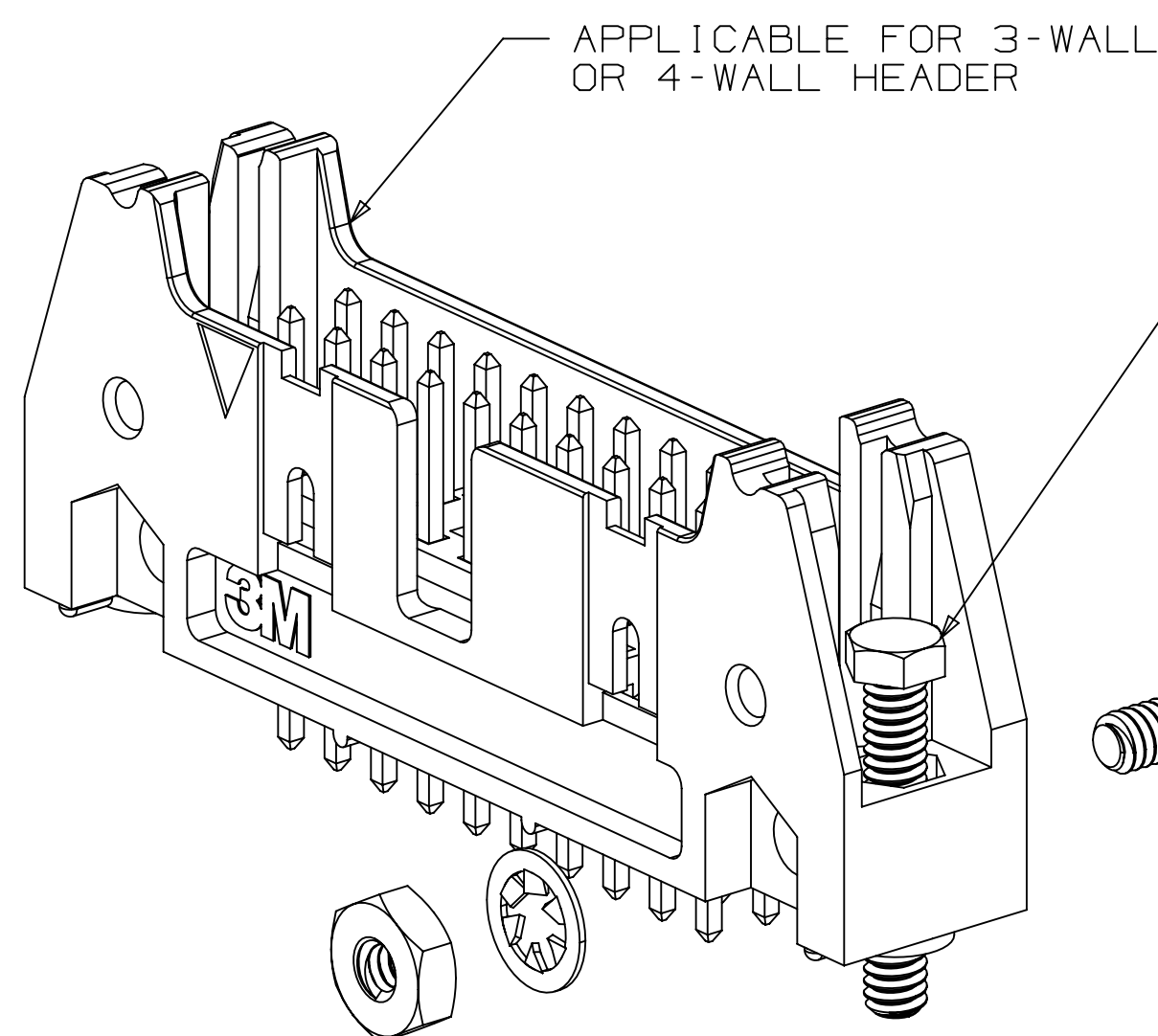
HEX HEAD BOLT, NUT AND WASHER:
BOLT - #2-56 X 1/2"
MATERIAL: STAINLESS STEEL



3341-5

#4-24 TYPE BT SELF THREADING SCREW
WHEN USING LATCHES, MAXIMUM LENGTH
OF SCREW IS .250 INCHES PLUS
THICKNESS OF THE BOARD.

NOTE:
1) MOUNTING HARDWARE:
FROM SOLDER SIDE OF PC BOARD
USE #4-24 THREAD CUTTING SCREW
(3M PART #3341-5) WITH
Ø.116 [2.95] MOUNTING HOLE.
FOR RIGHT ANGLE VERSION ONLY:
#2-56 BOLT AND NUT (3M PART
#3341-6) WITH Ø.106 [2.69]
MOUNTING HOLE MAY BE USED.



- APPLICABLE FOR 3-WALL
OR 4-WALL HEADER

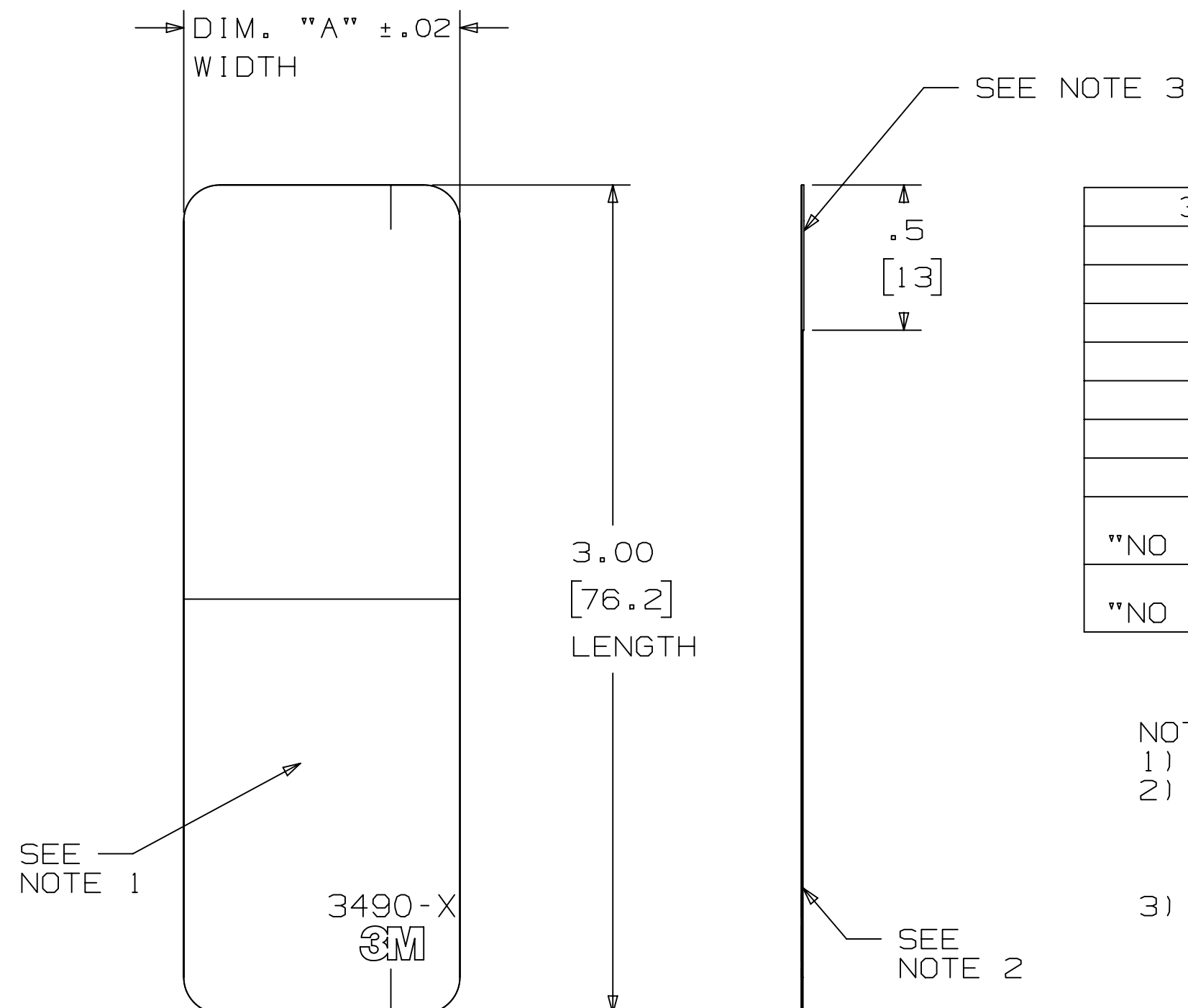
- STRAIGHT VERSION INSTALL
(MUST BE INSERTED PRIOR TO
LATCH INSTALL)

- RIGHT ANGLE VERSION INSTALL

3341-6

#2-56 NUT AND BOLT

STANDARD PULL TAB
3490




3M PART NUMBER	DIMENSION "A"
3490-1	0.50 [12.7]
3490-2	1.00 [25.4]
3490-3	1.50 [38.1]
3490-4	2.00 [50.8]
3490-5	2.50 [63.5]
3490-7	3.10 [78.7]
3490-6	3.25 [82.6]
3490-9	1.50 [38.1] WIDTH 2.00 [50.8] LENGTH
3490-10	0.26 [6.6]
"NO PRODUCT LABELING"	
"NO PRODUCT LABELING"	

NOTES:

- 1) MATTE FINISH FOR INK LABELING.
- 2) MATERIAL: POLYESTER
THICKNESS: .005 \pm .001
FLAMMABILITY: OXYGEN INDEX
MINIMUM 28, ASTM D-2863.
- 3) MATERIAL:
DOUBLE SIDED ADHESIVE TABE WITH LINER.

F	106900	SEP 15,2022	JNC	FJR
E	46446	MAY 13,2013 REVISED AND REDRAWN	SJS	ARM
D	34670	JUN 21,2012 CORRECT CODE FOR 3201 POST	SJS	ARM
C	32294	APR 06,2011 ADD REF TO OTHER TS	SBO	SAN
B	21878	MAR 06,2009 ADD 6P AND 8P	SJS	RKR
A	AT2103	APR 23,2007 MIGRATED FROM OLD SYSTEM AND FIX ERRORS	ESD	ESD
REV	ECO	ISSUE DATE AND DESCRIPTION	DRFT	CHKD
DRFT	CAS1GLIONE	DATE SEP 14, 2022	WFO	DATE
CHKD		DATE	APPROV. RODRIGUEZ	SATP 14, 2022

DESIGN REFERENCE		NEXT ASSEMBLY	
ACCESS CODES			
DIVISION		DIVISION CODE	
		EMSD	
DO NOT SCALE DRAWING		TOLERANCES EXCEPT AS NOTED	
		INCHES	
THIRD ANGLE PROJECTION		.0 ± .1	
		.00 ± .01	
		.000 ± .005	
		.0000 ± .0002	
INTERPRET PER ASME Y14.5 - 2018		MILLIMETERS	
MAX. SURFACE ROUGHNESS <input type="checkbox"/> ALL SURFACES <input checked="" type="checkbox"/> MARKED ONLY		0 ±	
		.00 ±	
		.000 ±	
		ANGLES ±	

	3M Center St. Paul, MN 55144	© 3M COPYRIGHT 1972 This document and the information it contains are 3M property and may not be reproduced or further distributed without 3M permission, or used for any purpose other than for 3M authorized purposes. All rights reserved.	
	TITLE <div style="text-align: center;"> 3M ACCESSORIES, WMT, 1.00" X 1.00" SOCKET AND HEADER </div>		
CAGE NUMBER	SIZE D	DRAWING NO. <div style="text-align: center;"> 78-5100-0720-2 </div>	REV. <div style="text-align: center;"> F </div>
MODEL 3000 2500 1M	DET. <input type="checkbox"/> YES <input checked="" type="checkbox"/> NO	SHT 2 OF 3	

3M ELECTRONICS MATERIALS SOLUTIONS DIVISION
INTERCONNECT SOLUTIONS
<http://www.3M.com/interconnect>

3M IS A TRADEMARK OF 3M COMPANY.
FOR TECHNICAL, SALES OR ORDERING
INFORMATION CALL 800-225-5373

3M™ ACCESSORIES

.100" X .100" WIREMOUNT SOCKET AND HEADER

Regulatory: For regulatory information about this product, visit 3M.com/regs or contact your 3M representative.

Technical Information: The technical information, guidance, and other statements contained in this document or otherwise provided by 3M are based upon records, tests, or experience that 3M believes to be reliable, but the accuracy, completeness, and representative nature of such information is not guaranteed. Such information is intended for people with knowledge and technical skills sufficient to assess and apply their own informed judgment to the information. No license under any 3M or third party intellectual property rights is granted or implied with this information.

Product Use: Many factors beyond 3M's control and uniquely within user's knowledge and control can affect the use and performance of a 3M product in a particular application. As a result, customer is solely responsible for evaluating the product and determining whether it is appropriate and suitable for customer's application, including conducting a workplace hazard assessment and reviewing all applicable regulations and standards (e.g., OSHA, ANSI, etc.). Failure to properly evaluate, select, and use a 3M product in accordance with all applicable instructions and with appropriate safety equipment, or to meet all applicable safety regulations, may result in injury, sickness, death, and/or harm to property.

Warranty, Limited Remedy, and Disclaimer: Unless a different warranty is specifically stated on the applicable 3M product packaging or product literature (in which case such warranty governs), 3M warrants that each 3M product meets the applicable 3M product specification at the time 3M ships the product. 3M MAKES NO OTHER WARRANTIES OR CONDITIONS, EXPRESS OR IMPLIED, INCLUDING, BUT NOT LIMITED TO, ANY IMPLIED WARRANTY OR CONDITION OF MERCHANTABILITY, FITNESS FOR A PARTICULAR PURPOSE, OR ANY IMPLIED WARRANTY OR CONDITION ARISING OUT OF A COURSE OF DEALING, CUSTOM, OR USAGE OF TRADE. If a 3M product does not conform to this warranty, then the sole and exclusive remedy is, at 3M's option, replacement or repair of the 3M product or refund of the purchase price.

Limitation of Liability: Except for the limited remedy stated above, and except to the extent prohibited by applicable law, 3M will not be liable for any loss or damage arising from or related to the 3M product, whether direct, indirect, special, incidental, or consequential (including, but not limited to, lost profits or business opportunity), regardless of the legal or equitable theory asserted, including, but not limited to, warranty, contract, negligence, or strict liability.

Disclaimer: For industrial use only. Not intended, labeled or packaged for consumer sale or use.

3M Company
Electronics Materials Solutions Division
13011 McCallen Pass, Bldg. C
Austin, TX 78753-5380
1-800-225-5373
www.3M.com/interconnect

3M ELECTRONICS MATERIALS SOLUTIONS DIVISION
INTERCONNECT SOLUTIONS
http://www.3M.com/interconnect

3M IS A TRADEMARK OF 3M COMPANY.
FOR TECHNICAL, SALES OR ORDERING
INFORMATION CALL 800-225-5373

F	106900	SEP 15,2022	JNC	FJR
E	46446	MAY 13,2013	SJS	ARM
D	34670	JUN 21,2012	SJS	ARM
C	32294	APR 06,2011	SBO	SAN
B	21878	MAR 06,2009	SJS	RKR
A	AT2103	APR 23,2007	ESD	ESD
REV	ECO	ISSUE DATE AND DESCRIPTION	DRFT	CHKD
DRFT	CATTIGLIONE	DATE SEP 14,2022	APPR	DATE
CHKD		DATE	APPR	DATE
			F. RODRIGUEZ	SEP 14,2022
DESIGN REFERENCE		NEXT ASSEMBLY		
XREF CODES				
DIVISION		DIVISION CODE		
		EMSD		
DO NOT SCALE DRAWING		TOLERANCES EXCEPT AS NOTED		
THIRD ANGLE PROJECTION		INCHES		
		.0 ±.1		
		.00 ±.01		
		.000 ±.005		
		.0000 ±.0002		
INTERPRET PER ASME Y14.5 - 2018		MILLIMETERS		
		0 ±		
		.0 ±		
		.00 ±		
		.000 ±		
MAX SURFACE ROUGHNESS		ANGLES		
ALL SURFACES				
MARKED ONLY				
		CAGE NUMBER		
		SIZE		
		DRAWING NO.		
		REV.		
		D 78-5100-0720-2 F		
MODEL		3000 2500 1M		
		DET		
		LISTS		
		YES		
		NO		
		SHT 3 OF 3		