

Revision

1.0.0



RK-WI.M868X-R USER'S MANUAL

RADIOTRONIX, INC.

RK-WI.M868X-R USER'S MANUAL

© Radiotronics
905 Messenger Lane
Moore, Oklahoma 73160
Phone 405.794.7730 • Fax 405.794.7477
www.radiotronics.com

Document Control

	SIGNED	DATE
CREATED BY	TRM	12/15/2004
ENGINEERING REVIEW		
MARKETING REVIEW	TJE	6/13/2007
APPROVED- ENG.		
APPROVED- MAR.	TJE	6/13/2007

Revised History

REVISION	SIGNED	DATE	DESCRIPTION
1.0.0	TRM	12/15/2004	Document created.

Table of Contents

1. DESCRIPTION	5
2. DEVELOPMENT KIT SETUP.....	6
3. USING THE RK-WI.M868X-R™ EVALUATION SOFTWARE	7
3.1. COM PORT SETUP AND SELECTION	7
3.2. WIRELESS CHAT PAGE	7
3.3. NON-VOLATILE REGISTER PAGE	8
3.4. VOLATILE REGISTER PAGE	9
4. USING THE EVALUATION SOFTWARE	10
4.1. SETTING REGISTER VALUES	10
4.1.1. <i>Transceiver Mode</i>	10
4.1.2. <i>Transmit Diagnostic</i>	10
4.1.3. <i>Receive Diagnostic</i>	10
5. NOTES.....	11
5.1. MICROSOFT/ HILGRAEVE HYPERTERMINAL	11
5.2. LOOPBACK MODE	11
6. PCB LAYOUT DIAGRAMS.....	12
6.1. RK-WI.M868X-R™ EVALUATION BOARD LAYOUT	12
6.2. WI.M868X-EVM-R™ EVALUATION MODULE LAYOUT	13
6.3. WI.M868X-EVM-R™ MODULE PIN OUT.....	14
6.3.1. <i>Pin Descriptions</i>	14
7. SCHEMATIC DIAGRAMS.....	15
7.1. WI.M868X-EVM-R™ SCHEMATIC DIAGRAM.....	15
7.2. RK-WI.M868X-R™ EVALUATION BOARD SCHEMATIC DIAGRAM	16
8. CUSTOM APPLICATIONS	17
9. ORDERING INFORMATION	18
9.1. CONTACT INFORMATION	18
9.1.1. <i>Technical Support</i>	18
9.1.2. <i>Sales Support</i>	18

Index of Tables

Table 1, Pin Descriptions	14
---------------------------------	----

Table of Figures

Figure 1: COM Port Setup	7
Figure 2: Wireless Chat	8
Figure 3: Non-Volatile Register Page	8
Figure 4: Volatile Register Page	9
Figure 6: RS-232 Jumpers	11
Figure 7: Evaluation Board Layout	12
Figure 8: Evaluation Module Layout	13
Figure 9: WI.M868X-EVM-R™ Schematic Diagram	15
Figure 10: RK-WI.M868X-R™ Evaluation Board Schematic Diagram	16

1. Description

The RK-Wi.M868X-R™ is a rapid-development/evaluation kit for the Wi.M868X data transceiver.

Included in the kit is:

- 1 – Development Case
- 1 – Development Utility and Documentation CD
- 2 – Development Boards
- 2 – Wi.M868X-EVM-R™ modules (pinned)
- 2 – 868 MHz Antennas
- 2 – RS-232 Cables
- 2 – USB Cables
- 6 – AAA Batteries
- Quick Start Guide
- Datasheet/ User's Manual hard copy (optional)

*** Datasheet/ User's Manual is provided on the Documentation CD.**

2. Development Kit Setup

- Insert the AAA batteries into the evaluation PCB, observing the correct polarity.
- Insert a Wi.M868X-EVM-R™ module into one of the evaluation boards, observing the correct orientation (see later in this document). The correct orientation of the module is with the antenna connector closest to the edge of the evaluation board. Make sure it is seated fully and correctly.
- Insert the other Wi.M868X-EVM-R™ module into the other evaluation board, also observing the correct polarity.
- Connect antennas to Wi.M868X-EVM-R™ modules.
- Connect evaluation boards to computers. If using USB communications, populate USB jumpers and remove RS-232 jumpers. If using RS-232 communications, populate RS-232 jumpers and remove USB jumpers.
- Install the RK-Wi.M868X-R™ Windows software. If already installed, skip this step.
- Run the RK-Wi.M868X-R™ software, select 2400 baud operation and navigate to the “Wireless Chat” tab.
- Power-On both evaluation boards, verifying that the version/copyright information is echoed to the screen from both modules.
- Chat back and forth between evaluation boards, verifying that serial and RF communications are successful.

IMPORTANT NOTE FOR HYPERTERMINAL USERS: See section 4.1

Chapter

3

3. Using the RK-Wi.M868X-R™ Evaluation Software

The software supplied with the RK-Wi.M868X-R™ Development Kit is used to read and set the volatile and non-volatile registers with the Wi.M868X-R™ module. Refer to the Wi.M868X-R™ Users Manual for more information on the register settings.

3.1. COM Port Setup and Selection

Upon starting the RK-Wi.M868X-R™ evaluation software, you will be presented with a COM port selection dialog box. If you are using the USB interface, make sure that the evaluation board is already connected to the computer via the USB cable before you start the software. This will ensure that the virtual COM port which is assigned to the USB to UART bridge controller by Windows is visible in the COM port selection list.

The first time you start the RK-Wi.M868X-R™ evaluation software, the Baud Rate should be left at 2400 baud, since this is the factory default baud rate setting for the module.

Tip: The RK-Wi.M868X-R™ evaluation software does not auto detect the baud rate of the module. If you have changed the Non-Volatile Data Rate register, you will have to select the baud rate you set this register to when you start the RK-Wi.M868X-R™ evaluation software.

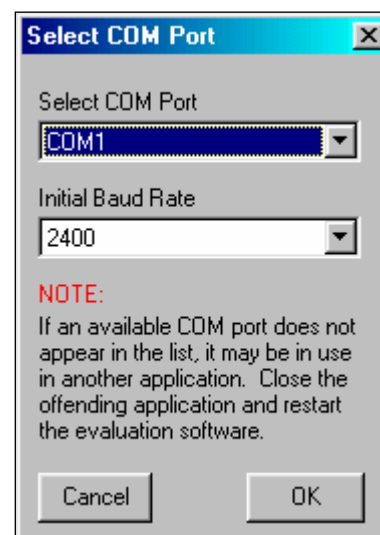


Figure 1: COM Port Setup

3.2. Wireless Chat Page

The Wireless Chat page in the RK-Wi.M868X-R™ evaluation software demonstrates the capability of the Wi.232™ to be used as a wireless communications link. The Rapid Development kit works as a wireless chat link with no register changes required, out of the box.

To Use Wireless Chat: Type a message in the lower text field and press Enter. The text you typed will be displayed on the remote system, prefixed with a Node Identifier if you specified one.

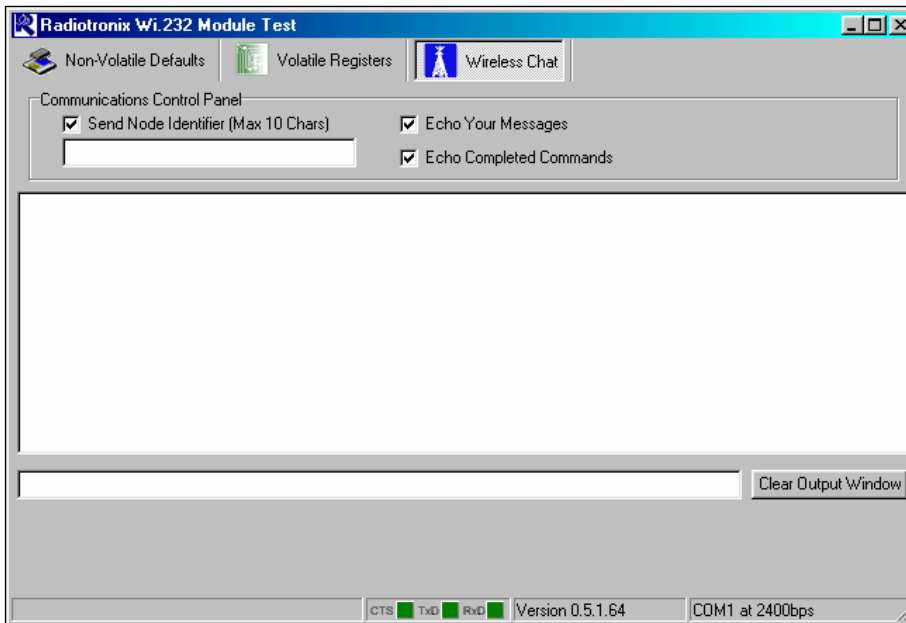


Figure 2: Wireless Chat

3.3. Non-Volatile Register Page



Figure 3: Non-Volatile Register Page

The Non-Volatile Register page in the evaluation software allows you to change the default settings which will be loaded when the module is powered on.

It is important to note that data rates in excess of 19.2kbps cannot be achieved in LP mode due to bandwidth limitations.

Tip: If you change the Non-Volatile Data Rate setting, you will have to select the baud rate you set this register to when you start the RK-Wi.M868X-R™ evaluation software.

3.4. Volatile Register Page

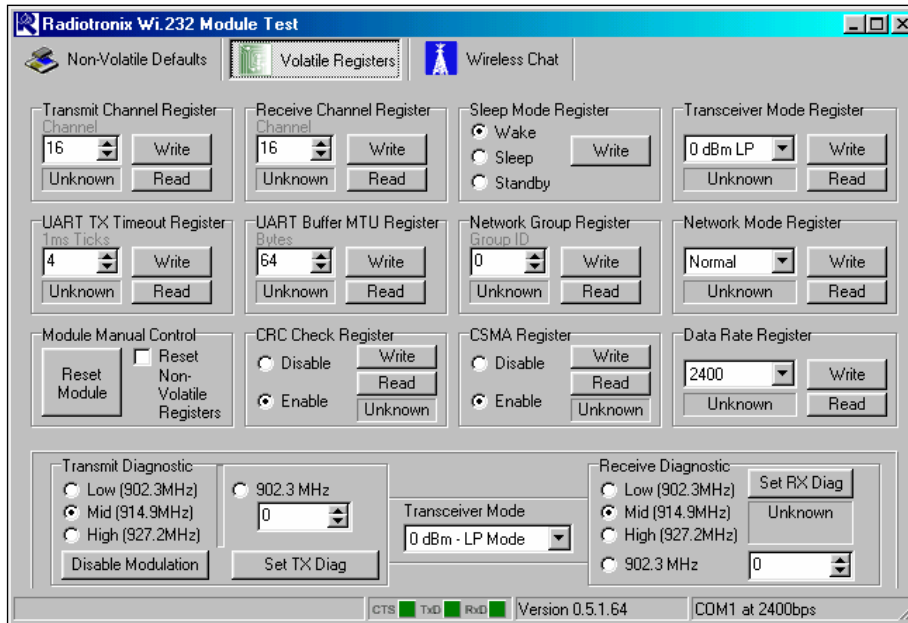


Figure 4: Volatile Register Page

In this page, you can change the Volatile settings of the module. Values programmed into these registers are lost of power-down. The page also provides a means of switching the receiver and transmitter on and off, setting receive and transmit channels, transceiver mode and modulation settings.

Tip: It is important to note that data rates in excess of 19.2kbps cannot be achieved in LP mode due to bandwidth limitations.

4. Using the Evaluation Software

4.1. Setting Register Values

On both the Volatile and Non-Volatile pages, the registers are labeled by function. To set a register value, select the value from the options available for that register and click the “Write” button. To perform a read of that register, simply click the “Read” button. Descriptions of the register functions can be found in the Wi.M868X-R™ Users Manual.

4.1.1. Transceiver Mode

This selects the modulation mode and power output of both the transmitter and receiver. The mode is not set until “Set TX Diag” or “Set RX Diag” is pressed. If “Set RX Diag” is pressed, the power output value is ignored.

4.1.2. Transmit Diagnostic

Transmit Diagnostic consists of four radio buttons which select the transmit channel. Low, Mid and High are quick reference buttons which can be used to select the lowest, the middle, or the highest channel. Any specific channel can be selected by using the controls below the “Set TX Diag” button.

The “Set TX Diag” button switches the transmitter on using the channel and mode selected in the channel selector and transceiver mode controls. A “...10101010101...” bit pattern is transmitted for bit error testing with another system or RF carrier analysis.

4.1.3. Receive Diagnostic

Receive Diagnostic consists of four radio buttons which select the transmit channel. Low, Mid and High are quick reference buttons which can be used to select the lowest, the middle, or the highest channel. Any specific channel can be selected by using the controls above the “Set RX Diag” button.

The “Set RX Diag” button switches on the receiver using the channel and mode selected in the channel selector and transceiver mode controls. Additionally, the module enters the diagnostic bit error test.

If a “...10101010101...” bit pattern is received at the frequency and baud rate set up in the relevant registers, the BER test will return the number and percent of bit errors. This information is displayed in the panel below the “Set RX Diag” button. If no transmission is present, or the transmission is at the wrong frequency or data rate, the module may enter an infinite loop waiting for the beginning of the data. In this case, the module should be powered down and back up to return the module to its normal operating mode.

5. Notes

5.1. Microsoft/ Hilgraeve HyperTerminal

The RK-Wi.M868X-R™ Evaluation Kit can be used with HyperTerminal to receive and transmit RS-232 data and send files using file transfer protocols such as ZMODEM. HyperTerminal and many other terminal programs assert RTS by default. On the evaluation board, the RTS line is tied to the CMD pin on the module. When the CMD pin is held low, which is the case when the RTS line is asserted; the module will be placed in command mode.

In command mode, all UART data sent to the moduSle will be interpreted as commands and will NOT be sent to the RF engine for transmission. Additionally, if an evaluation board is switched on in the presence of an asserted RTS line, it will perform a full hardware and flash reset to the factory defaults.

To use the evaluation board with HyperTerminal or other terminal program, you must first remove the jumpers from pins 7+8 of JP2, if you are using an RS-232 connection to your PC, or JP3, if you are using a USB connection to your PC. Removing this jumper will disconnect the RTS line from the CMD pin on the module, allowing normal operation.

5.2. Loopback Mode

The RK-Wi.M868X-R™ kit can be operated in a loopback mode by configuring the COM jumpers in such a way as to link together the TXD and RXD lines to and from the module in the remote evaluation board.

Using this mode, the user can send data from their local evaluation board and have it re-transmitted back to them by the remote evaluation board. The maximum baud rate allowed in loopback mode is 38400 baud for point to point communications only.

Loopback mode using the RS232 jumpers:

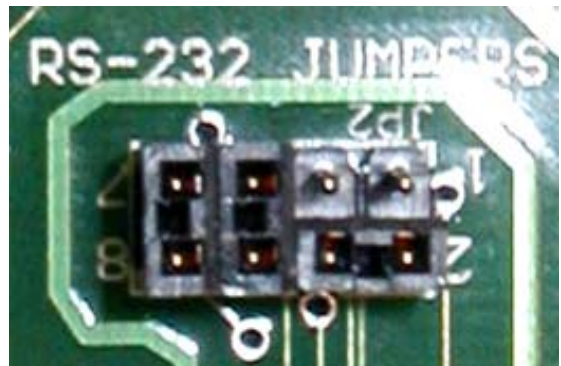


Figure 5: RS-232 Jumpers

6. PCB Layout Diagrams

6.1. RK-WI.M868X-R™ Evaluation Board Layout

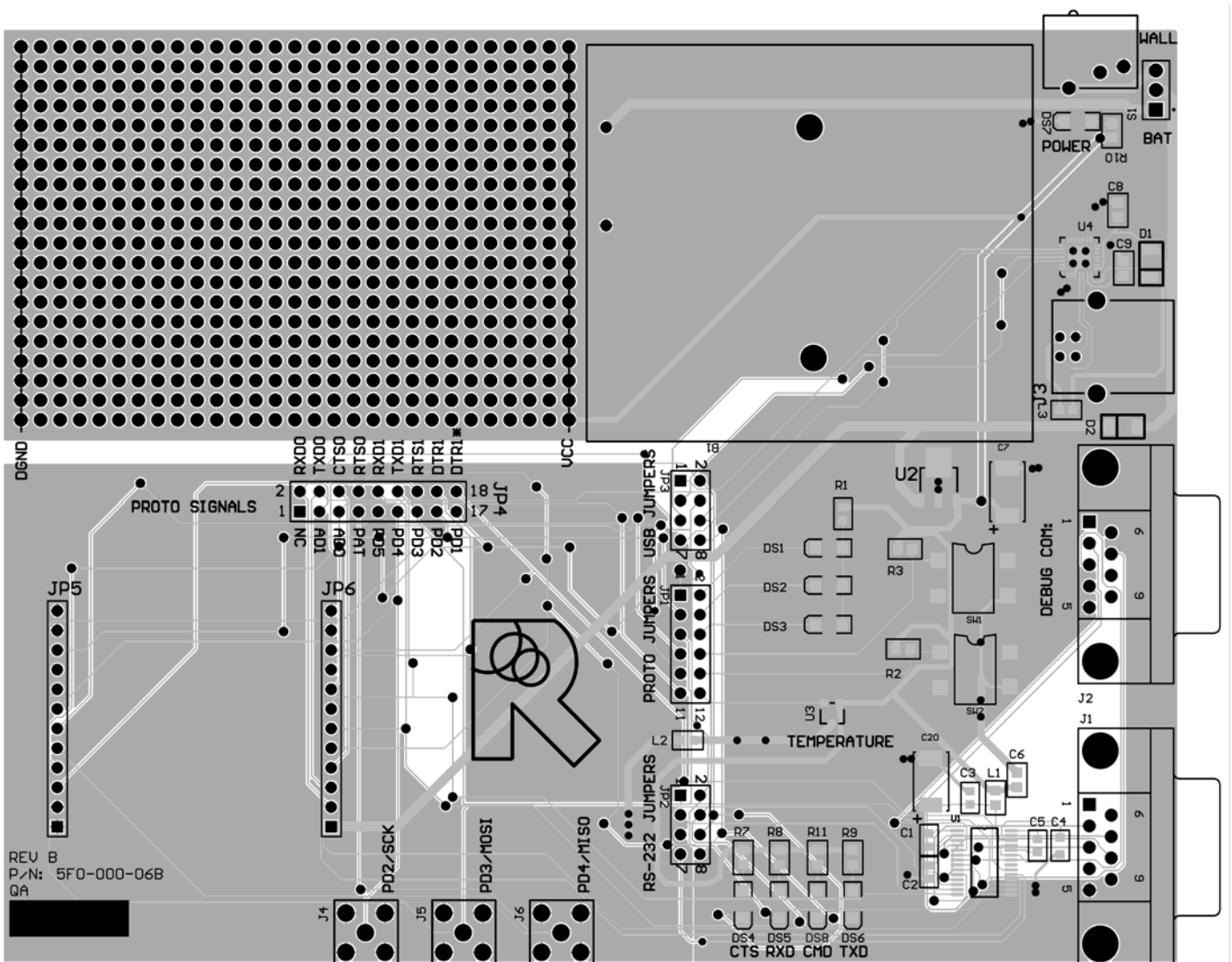


Figure 6: Evaluation Board Layout

6.2. WI.M868X-EVM-R™ Evaluation Module Layout

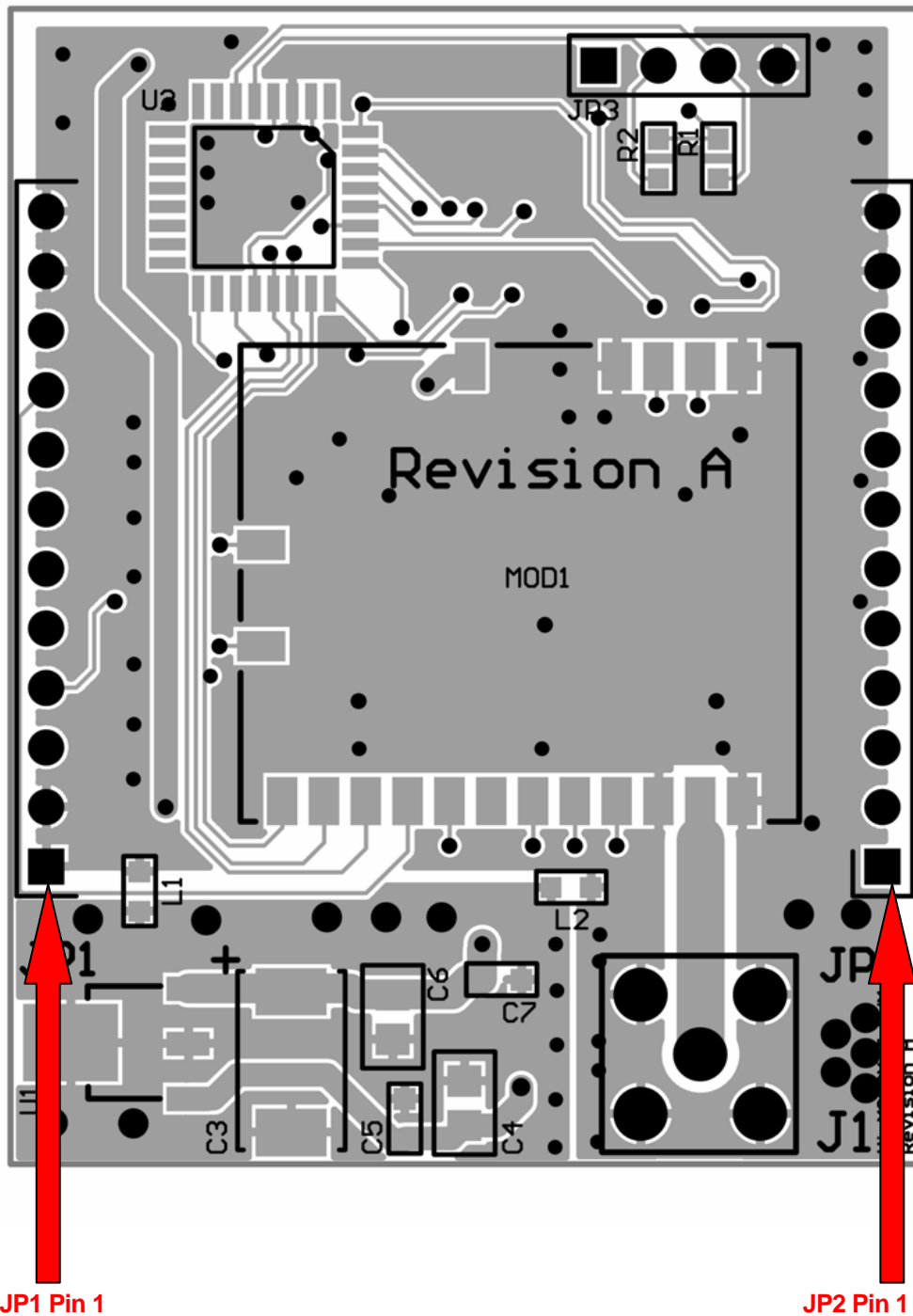


Figure 7: Evaluation Module Layout

NOTE: Pin 1 of the Wi.232DTS-FCC-R module's JP2 aligns with Pin 1 of JP6 on the evaluation board. The following table lists the pin numbers and their assignments.

6.3. WI.M868X-EVM-R™ Module Pin Out

6.3.1. Pin Descriptions

Pin Name	Pin Description
JP2 Pin 1	4V to 12V Vdd
JP2 Pin 2	RxD0, Wi.M868X-R™ RxD pin
JP2 Pin 3	TxD0, Wi.M868X-R™ TxD pin
JP2 Pin 4	CTS0, Wi.M868X-R™ CTS pin
JP2 Pin 5	CMD (Active Low), Wi.232DTS CMD pin
JP2 Pin 6	RxD1 – Reserved for Future – No Connect
JP2 Pin 7	TxD1 – Reserved for Future – No Connect
JP2 Pin 8	RTS1 – Reserved for Future – No Connect
JP2 Pin 9	DTR1 – Reserved for Future – No Connect
JP2 Pin 10	DTR1* - Reserved for Future – No Connect
JP2 Pin 11	GND
JP2 Pin 12	GND
JP1 Pin 1	GND
JP1 Pin 2	GND
JP1 Pin 3	AD1 – Reserved for Future – No Connect
JP1 Pin 4	AD0 – Reserved for Future – No Connect
JP1 Pin 5	RSSI – Reserved for Future – No Connect
JP1 Pin 6	PD5 – Reserved for Future – No Connect
JP1 Pin 7	PD4 – Reserved for Future – No Connect
JP1 Pin 8	PD3 – Reserved for Future – No Connect
JP1 Pin 9	PD2 – Reserved for Future – No Connect
JP1 Pin 10	PD1 – Reserved for Future – No Connect
JP1 Pin 11	GND
JP1 Pin 12	GND

Table 1, Pin Descriptions

7. Schematic Diagrams

7.1. WI.M868X-EVM-R™ Schematic Diagram

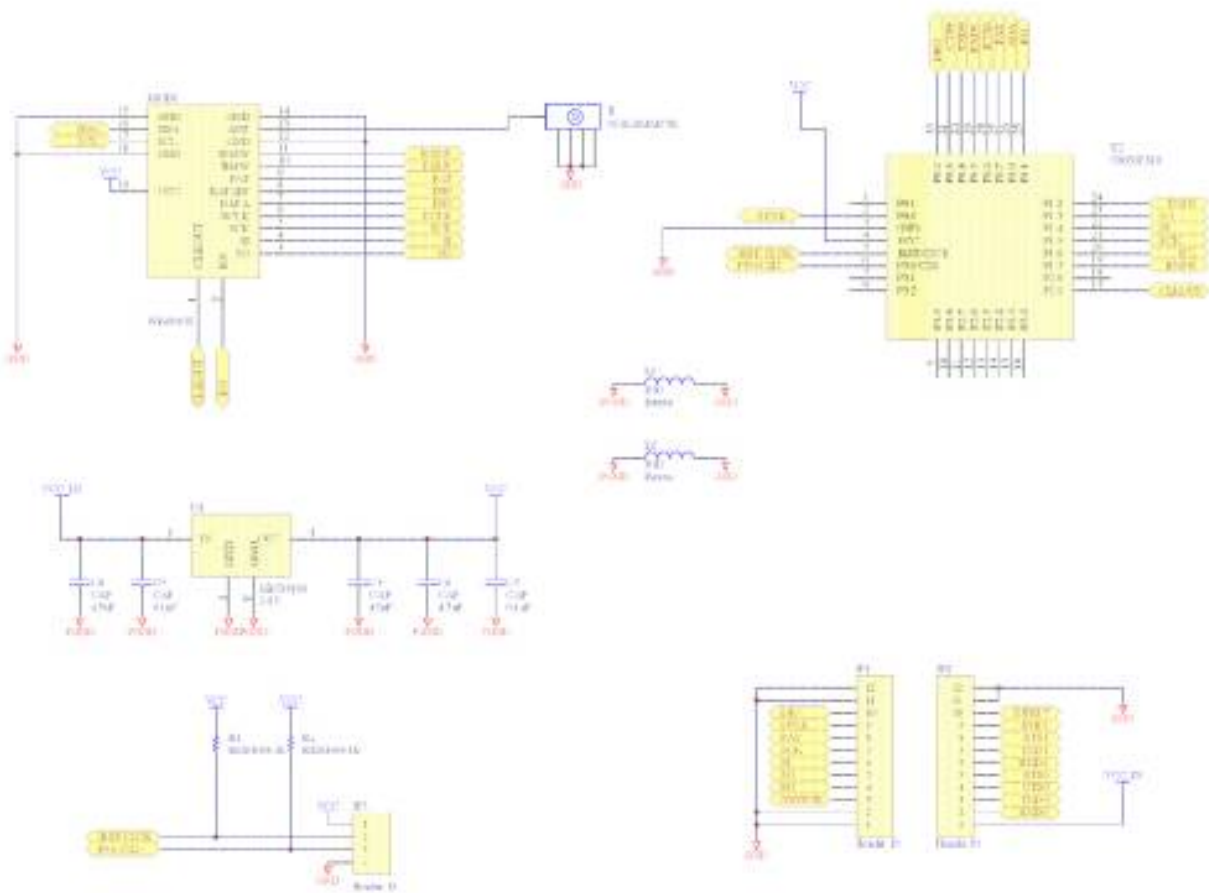


Figure 8: WI.M868X-EVM-R™ Schematic Diagram

7.2. RK-WI.M868X-R™ Evaluation Board Schematic Diagram

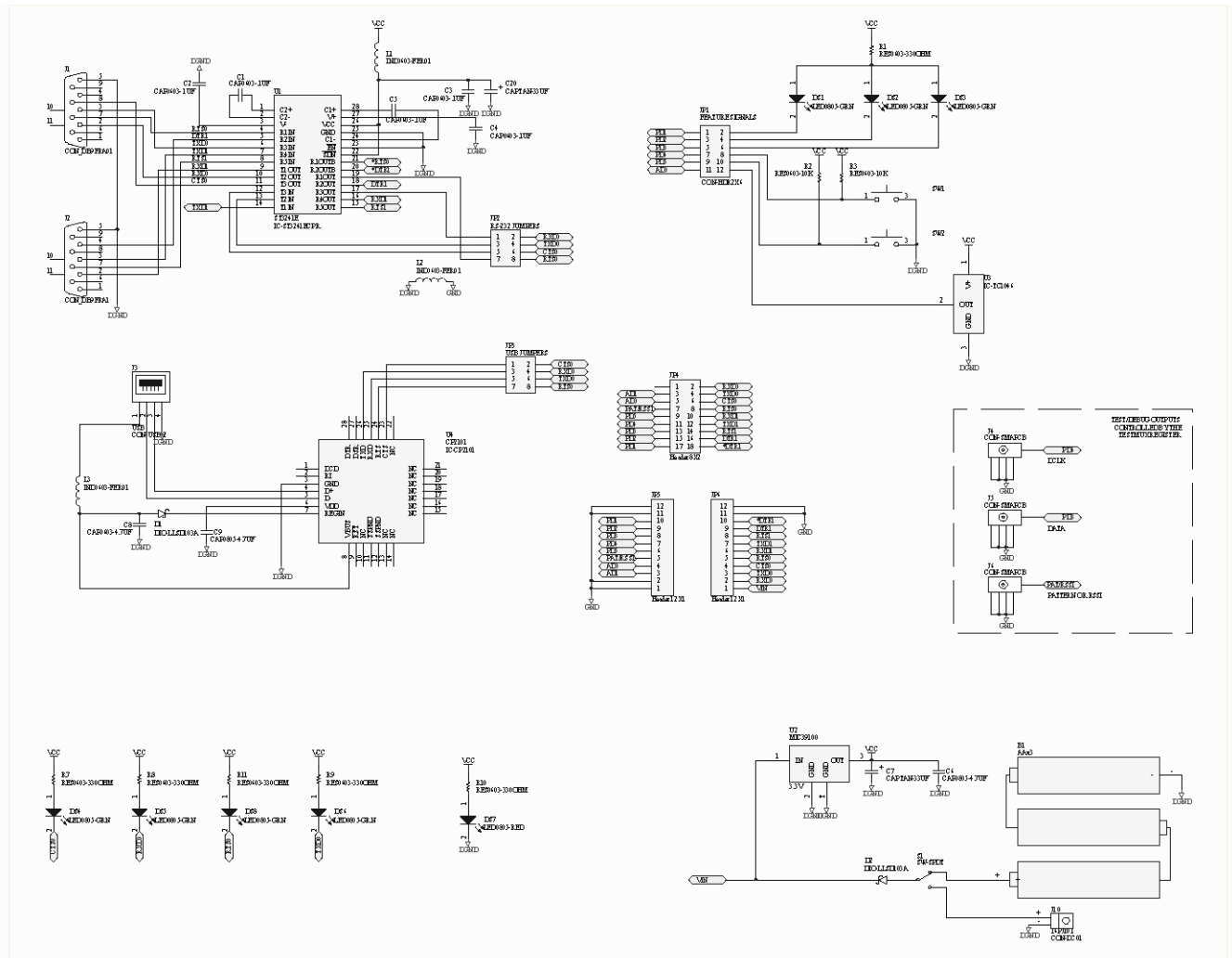


Figure 9: RK-WI.M868X-R™ Evaluation Board Schematic Diagram

8. Custom Applications

For cost-sensitive applications, such as wireless sensors and AMR, Radiotronix can embed the application software directly into the microcontroller built into the module. For more information on this service, please contact Radiotronix.

9. Ordering Information

Product Part Number	Description
RK-Wi.M868X-R	Development Kit
Wi.M868X-EVM-R	Evaluation Module

9.1. Contact Information

Corporate Headquarters:

905 Messenger Lane

Moore, Oklahoma 73160

405-794-7730

website: www.radiotronix.com

support: support@radiotronix.com

9.1.1. Technical Support

Radiotronix has built a solid technical support infrastructure so that you can get answers to your questions when you need them. Our primary technical support tools are the support forum and knowledge base found on our website. We are continuously updating these tools. To find the latest information about these technical support tools, please visit <http://www.radiotronix.com/support>. Our technical support engineers are available Mon-Fri between 9:00 am and 5:00 pm central standard time. The best way to reach a technical support engineer is to submit a Webcase. Webcase submissions can be made at <http://www.radiotronix.com/support/webcase.asp>. For customers that would prefer to talk directly to a support engineer, we do offer phone support free of charge.

9.1.2. Sales Support

Our sales department can be reached via e-mail at sales@radiotronix.com or by phone at 405-794-7730. Our sales department is available Mon-Fri between 8:30 am and 5:00 pm central standard time. Visit our web site at <http://www.radiotronix.com/corpsales.asp> for information on where to buy our products.

Mouser Electronics

Authorized Distributor

Click to View Pricing, Inventory, Delivery & Lifecycle Information:

[Linx Technologies:](#)

[WI.M868X-EVM](#) [WI.M868X-EVM-R](#)