
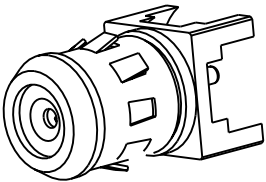


NOTES:

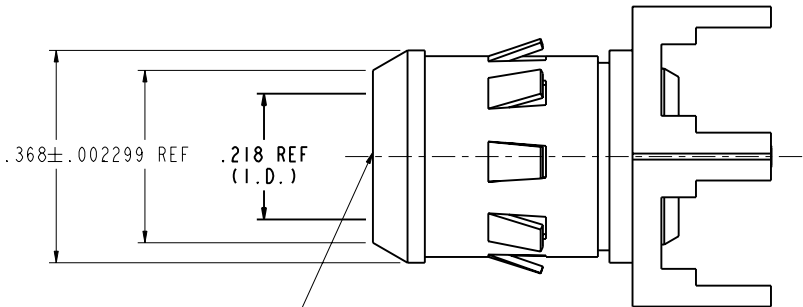
- I. MATERIALS OF CONSTRUCTION
BODY - BRASS, BRIGHT ACID TIN PLATED
CONTACTS - BeCu, GOLD OVER NICKEL PLATED
INSULATOR - PTFE

CUSTOMER OUTLINE DRAWING
ALL OTHER SHEETS ARE FOR INTERNAL USE ONLY

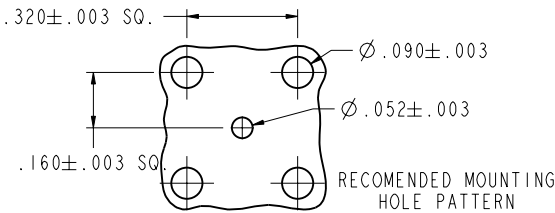
531-40051		REVISIONS			
DRAWING NO.	REV	DESCRIPTION	DATE	ECO	APPR
THIRD ANGLE PROJ. 	A	OFFICIAL ENG. RELEASE TO MFG.	2/4/98	42337	JW



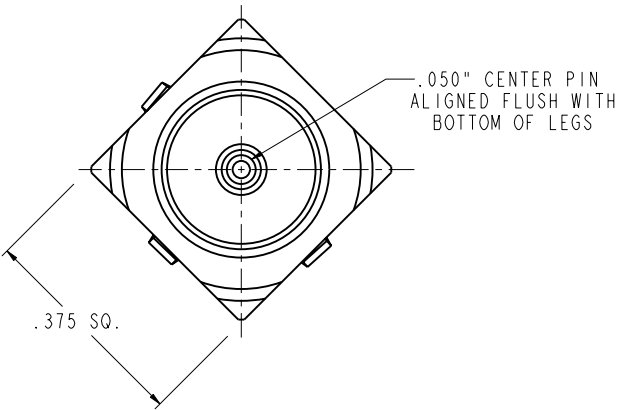
SCALE 3.000



ACCEPTS .045" - .055"
CTR. COND.



SCALE 3.000



.050" CENTER PIN
ALIGNED FLUSH WITH
BOTTOM OF LEGS

531-40051-0001	I	I	"G" JACK	SEE S/A
PART NUMBER	QTY.	ITEM	DESCRIPTION	FINISH

UNLESS OTHERWISE SPECIFIED, DIMENSIONS ARE IN INCHES AND TOLERANCES ARE:
2 PLACE DECIMAL 3 PLACE DECIMAL ANGLES
±.015 (0.381 mm) ±.005 (0.127 mm) ± 1°

NOTICE - These drawings, specifications, or other data (1) are, and remain the property of Amphenol Corp. (2) must be returned upon request; and (3) are confidential and not to be disclosed to any person other than those to whom they are given by Amphenol Corp. The furnishing of these drawings, specifications, or other data by Amphenol Corp., or to any other person to anyone for any purpose is not to be regarded by implication or otherwise in any manner licensing, granting rights or permitting such holder or any other person to manufacture, use or sell any product, process or design, patented or otherwise, that may in any way be related to or disclosed by said drawings, specifications, or other data.

MATERIAL	DRAWN J. WILKINSON	DATE 11-Sep-96	TITLE "G" JACK, PCB MOUNT .050" MATING PLUG			Amphenol Amphenol Corporation Communication and Network Products Division Danbury, CT U.S.A. 06810 SCALE: 5.0:1 SHEET 1 OF 1		
	ENGINEER J. WILKINSON	DATE 11-Sep-96						
REFERENCE	APPROVED T. AUBIN	DATE 2/3/98						
	CAD FILE I:\CATV\FTYPE\531-40051			CODE ID 74868	DWG SIZE B	DRAWING NO. 531-40051		REV A