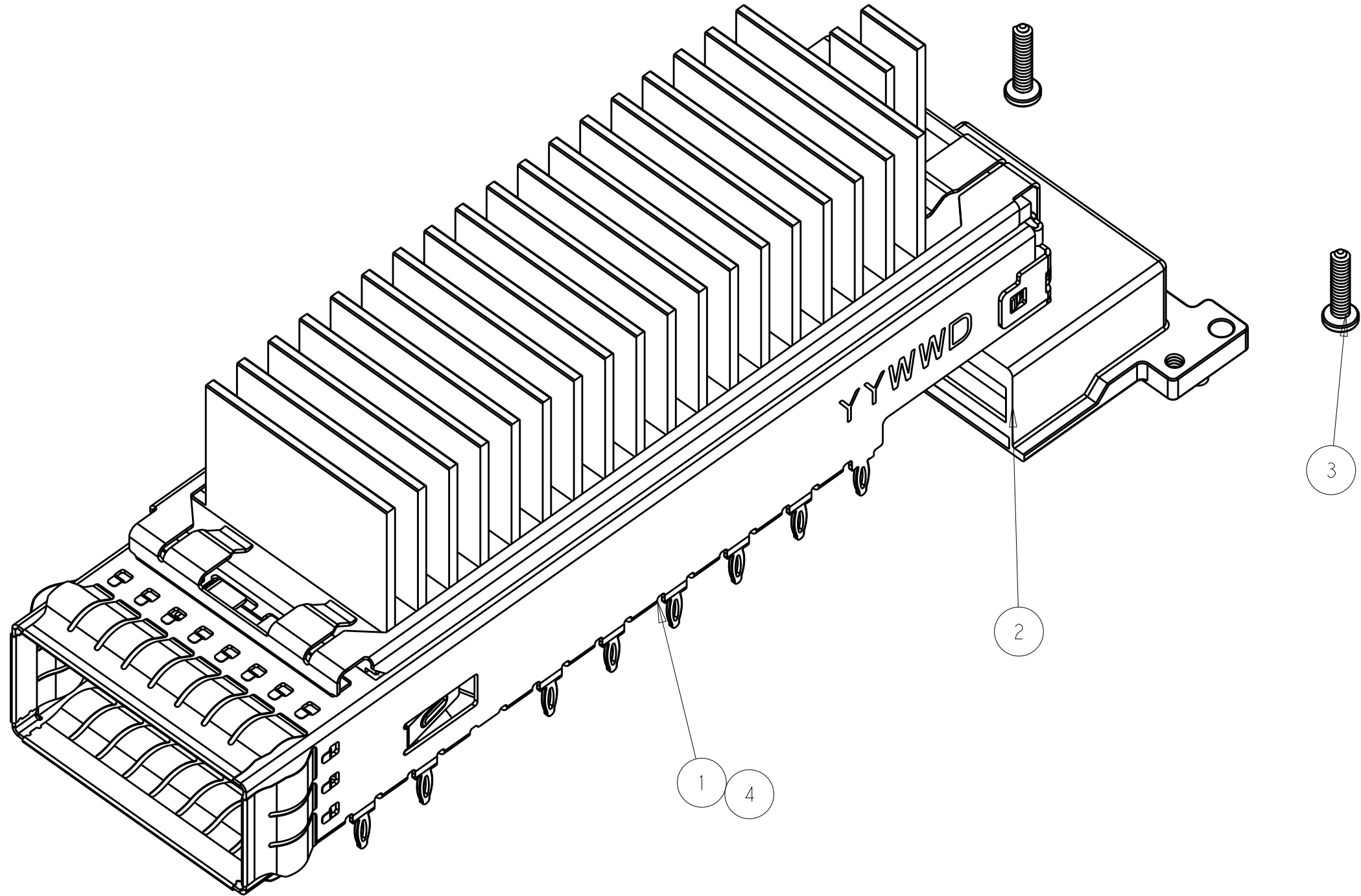


REVISIONS					
P	LTR	DESCRIPTION	DATE	DWN	APVD
	1	PRELIMINARY DRAWING	16JUN2015	AD	SH
	2	ADD NEW DASH NUMBER	19JUN2015	AD	SH
	4	REVISE BOM	25JUN2015	AD	SH
	8	ADDED DASH NUMBER 2288226-4	06FEB2017	TX	SH






- 1.MATERAIL : CAGE :0.3MM THICK NICKEL SILVER ALLOY;
EMI SPRING: COPPER ALLOY;
HEAT SINK CLIP: STAINLESS STEEL;
HEAT SINK:ALUMINUM ALLOY;
RECEPTACLE COVER:ZINC ALLOY;
2. FINISH: EMI SPRING -1.27um NICKEL PALTING OVER ALL;
HEAT SINK:BLACK ANODIZED COATING;
RECEPTACLE COVER: 1.27um MIN NICKEL PLATING OVER COPPER PLATING;
HEAT SINK CLIP: PASSIVATE;
- 3.MATES WITH CFP MSA COMPLIANT TRANSCEIVERS.
- 4.DATUM AND BASIC DIMENSION ESTABLISHED BY CUSTOMER.
- 5.MINIMUM PC BOARD THICKNESS: SIGLE SIDE APPLICATIONS=2.99±0.63mm.
- 6.PADS AND VIAS CHASSIS GROUND;
- 7:REFERENCE APPLICATION SPEC 114-XXXX,HOLE A, FOR
RECOMMENDED DRILL HOLE DIAMETER AND PLATING THICKNESS.

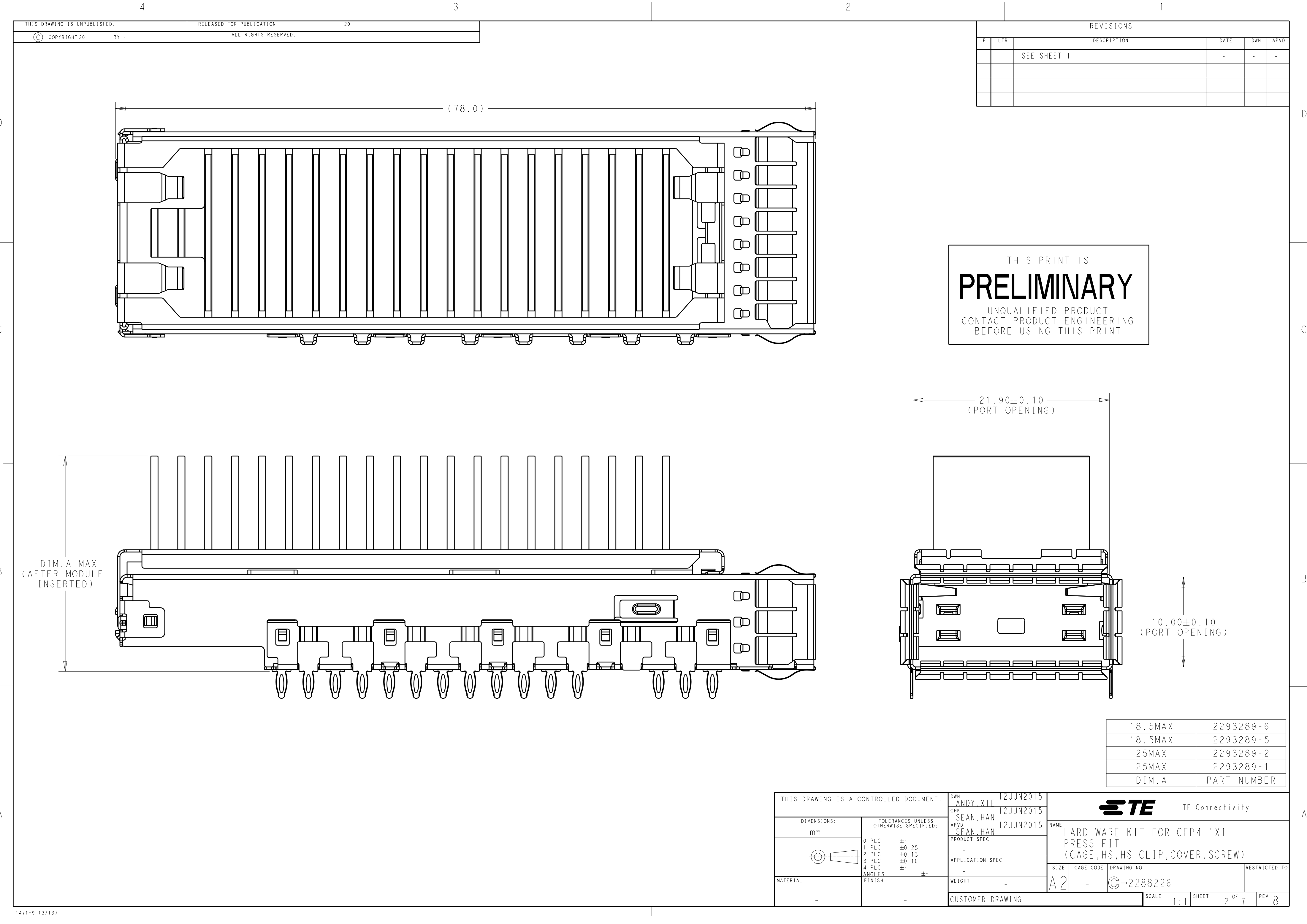
THIS PRINT IS

PRELIMINARY

UNQUALIFIED PRODUCT
CONTACT PRODUCT ENGINEERING
BEFORE USING THIS PRINT

1	-	-	-	2293289-6	CAGE ASSEMBLY WITH HS,CFP4 1X1	4
-	1	-	-	2293289-5		
-	-	1	-	2293289-2		
2	2	2	2	2292789-1	SCREW	3
1	1	1	1	2288228-1	RECEPTACLE COVER ASSEMBLY	2
-	-	-	1	2293289-1	CAGE ASSEMBLY WITH HS,CFP4 1X1	1
- 4	- 3	- 2	- 1	PAR NUMBER	DESCRIPTION	ITEM

THIS DRAWING IS A CONTROLLED DOCUMENT.		DWN ANDY.XIE 12JUN2015	<div><div>TE</div><div>TE Connectivity</div></div> <div>PRELIMINARY</div>		
		CHK SEAN.HAN 12JUN2015			
		APVD SEAN.HAN 12JUN2015			
		NAME			
DIMENSIONS: mm		TOLERANCES UNLESS OTHERWISE SPECIFIED:		HARDWARE KIT FOR CFP4 1X1 PRESS FIT (CAGE, HS, HS CLIP, COVER, SCREW)	
		0 PLC ±- 1 PLC ±0.25 2 PLC ±0.13 3 PLC ±0.10 4 PLC ±- ANGLES ±- FINISH		PRODUCT SPEC - APPLICATION SPEC - WEIGHT -	
MATERIAL 				SIZE A2	
				CAGE CODE -	
				DRAWING NO C=2288226	
				RESTRICTED TO -	
				CUSTOMER DRAWING	
				SCALE 1:1	
				SHEET 1 OF 7	
				REV 8	



THIS DRAWING IS UNPUBLISHED.		RELEASED FOR PUBLICATION		20	
© COPYRIGHT 20		BY -		ALL RIGHTS RESERVED.	

REVISIONS					
P	LTR	DESCRIPTION	DATE	DWN	APVD
-	-	SEE SHEET 1	-	-	-

THIS DRAWING IS A CONTROLLED DOCUMENT.		DWN ANDY.XIE CHK SEAN.HAN APVD SEAN.HAN	12JUN2015 12JUN2015 12JUN2015
DIMENSIONS:		TOLERANCES UNLESS OTHERWISE SPECIFIED:	
mm		0 PLC ±- 1 PLC ±0.25 2 PLC ±0.13 3 PLC ±0.10 4 PLC ±- ANGLES ±- FINISH	
MATERIAL		-	
-		-	

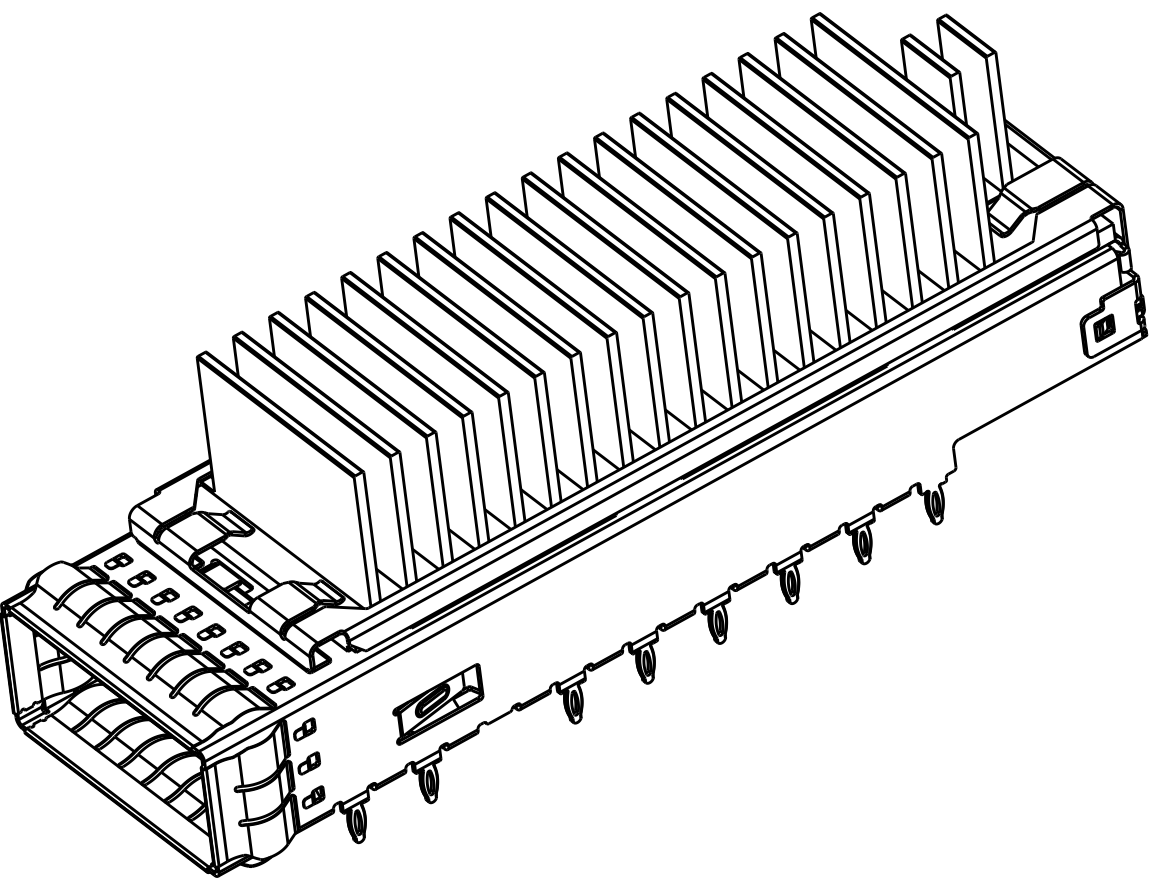
DWN ANDY.XIE CHK SEAN.HAN APVD SEAN.HAN		12JUN2015 12JUN2015 12JUN2015
PRODUCT SPEC		-
APPLICATION SPEC		-
WEIGHT		-
CUSTOMER DRAWING		-

TE Connectivity		NAME HARD WARE KIT FOR CFP4 1X1 PRESS FIT (CAGE,HS,HS CLIP,COVER,SCREW)	
SIZE A2	CAGE CODE -	DRAWING NO C-2288226	RESTRICTED TO -
SCALE 1:1		SHEET 2 OF 7	REV 8

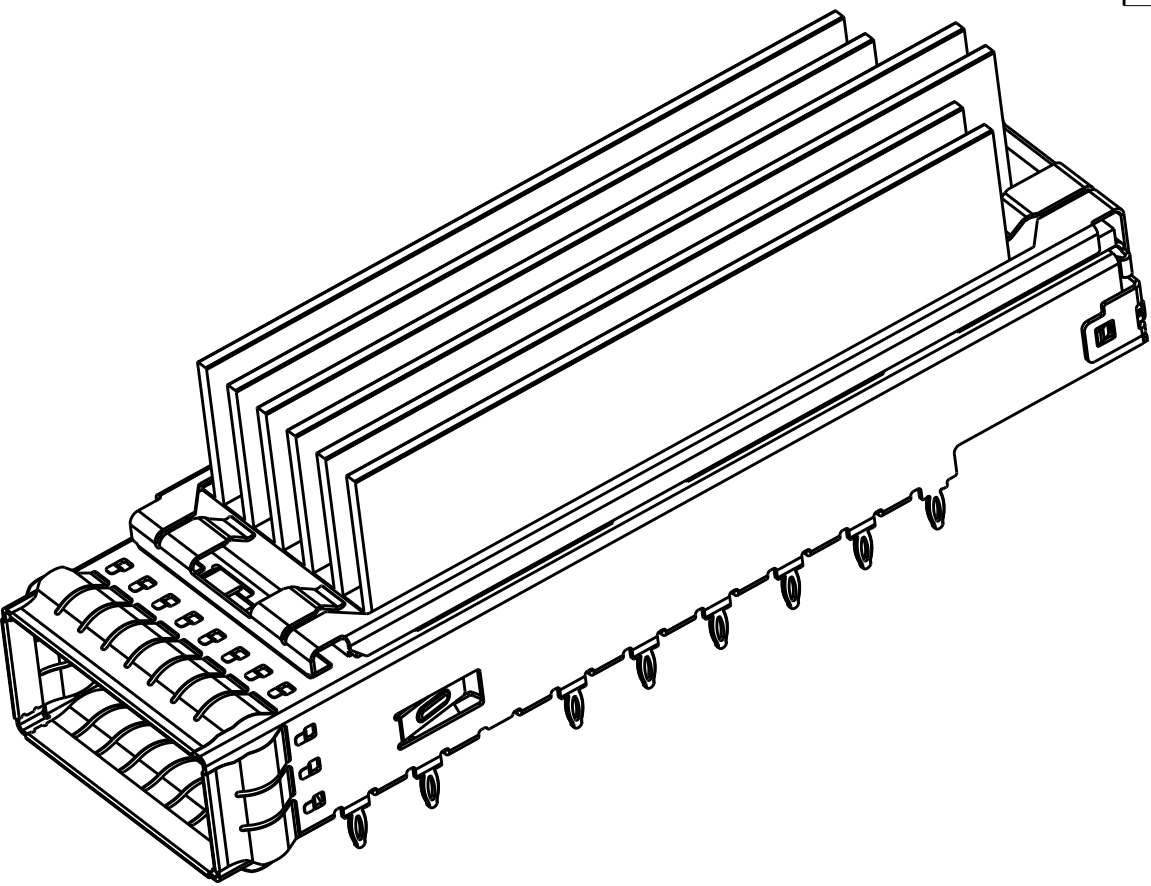
18.5MAX	2293289-6
18.5MAX	2293289-5
25MAX	2293289-2
25MAX	2293289-1
DIM.A	PART NUMBER

THIS DRAWING IS UNPUBLISHED.		RELEASED FOR PUBLICATION		20
©	COPYRIGHT 20	BY -	ALL RIGHTS RESERVED.	

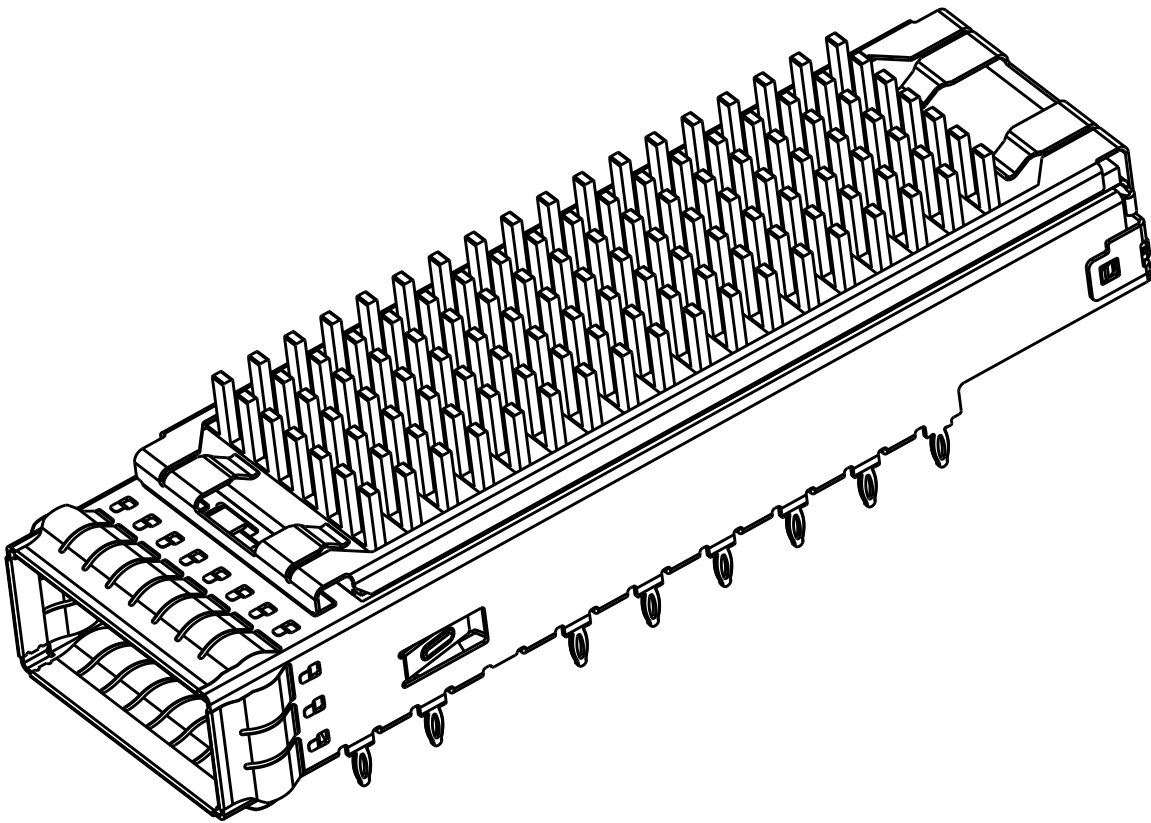
REVISIONS					
P	LTR	DESCRIPTION	DATE	DWN	APVD
	-	SEE SHEET 1	-	-	-



2293289-1
2293289-6
SCALE 2:1



2293289-2
SCALE 2:1



2293289-5
SCALE 2:1

THIS PRINT IS
PRELIMINARY
UNQUALIFIED PRODUCT
CONTACT PRODUCT ENGINEERING
BEFORE USING THIS PRINT

THIS DRAWING IS A CONTROLLED DOCUMENT.		DWN ANDY.XIE 12JUN2015	TE Connectivity			
		CHK SEAN.HAN 12JUN2015				
		APVD SEAN.HAN 12JUN2015	NAME HARD WARE KIT FOR CFP4 1X1 PRESS FIT (CAGE,HS,HS CLIP,COVER,SCREW)			
DIMENSIONS:		PRODUCT SPEC	SIZE	CAGE CODE	DRAWING NO	RESTRICTED TO
mm		APPLICATION SPEC	A2	-	C-2288226	-
		WEIGHT				
MATERIAL		CUSTOMER DRAWING	SCALE	1:1	SHEET	3 OF 7
					REV	8

REVISIONS					
P	LTR	DESCRIPTION	DATE	DWN	APVD
	-	SEE SHEET 1	-	-	-

D

D

C

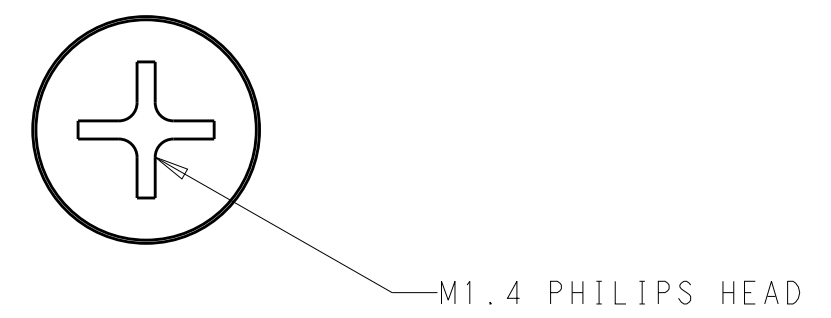
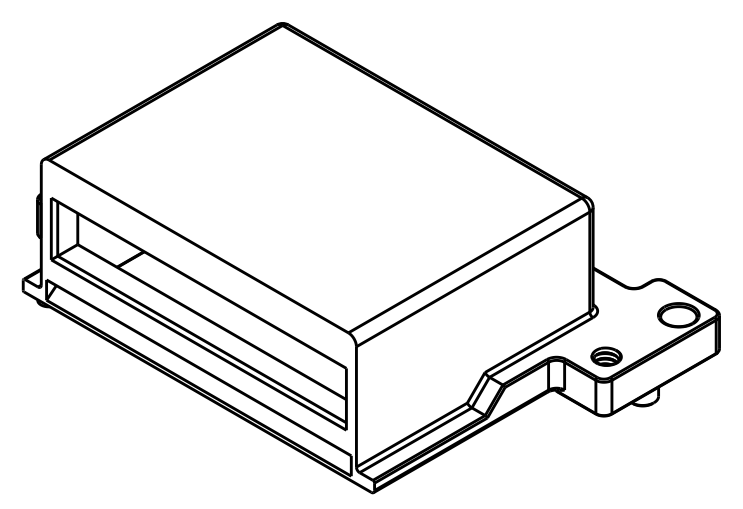
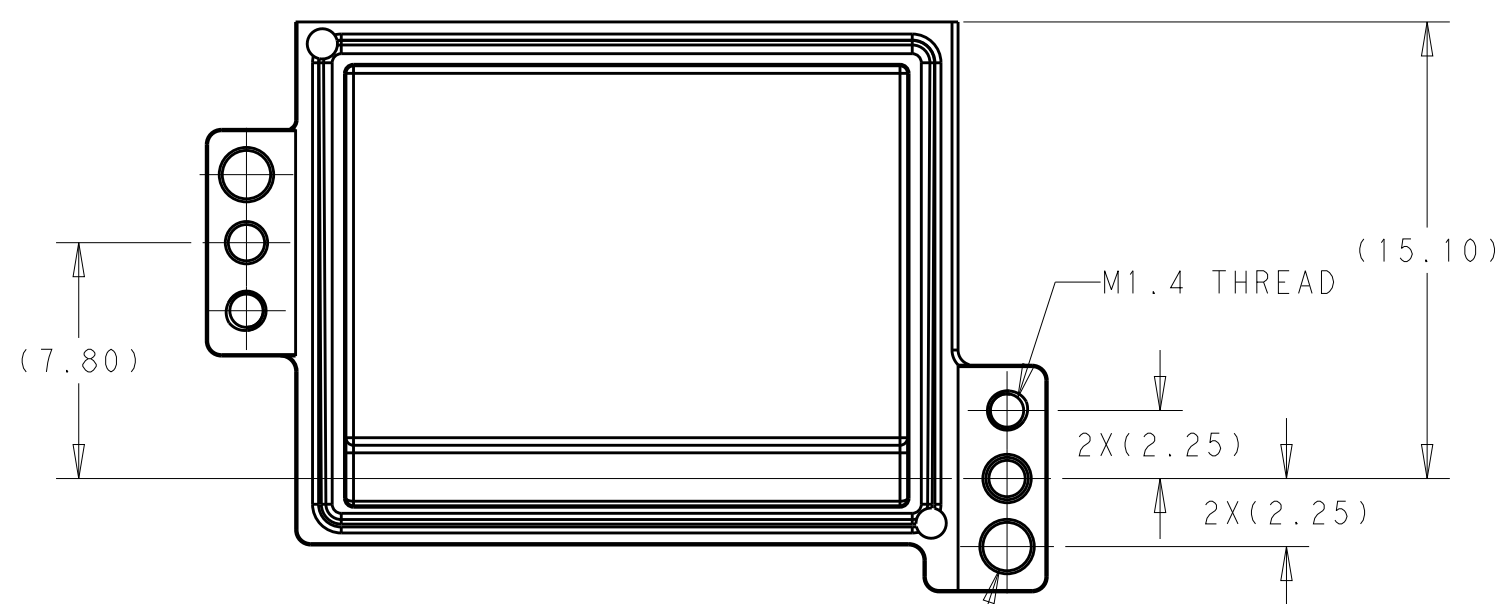
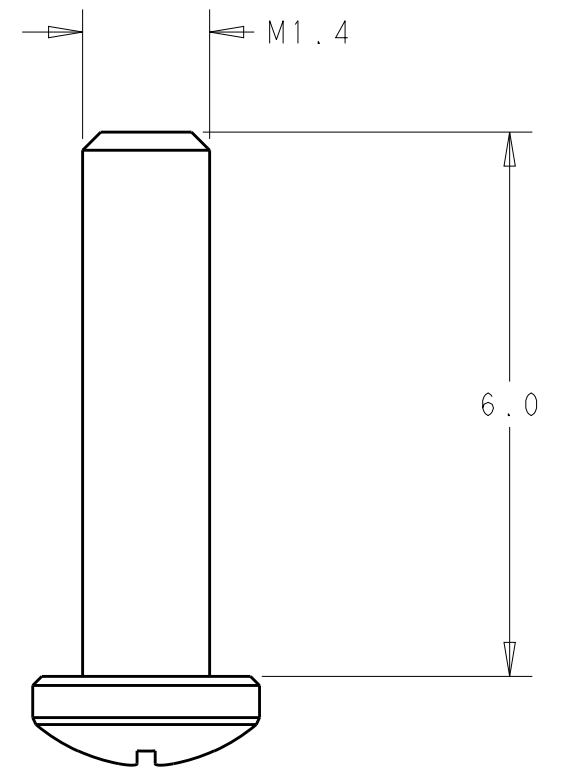
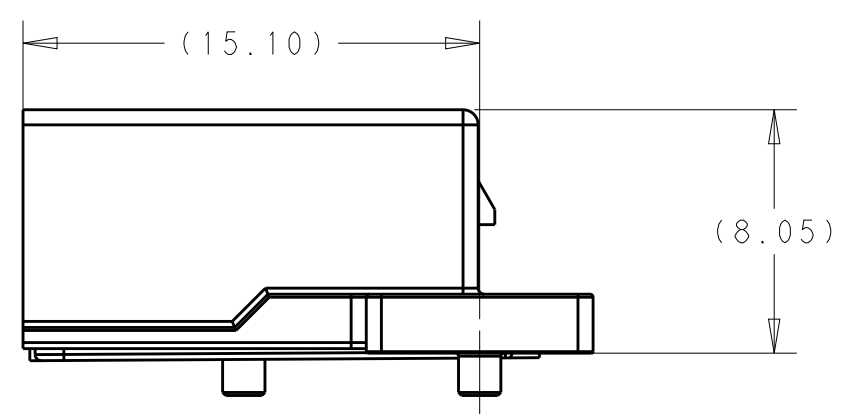
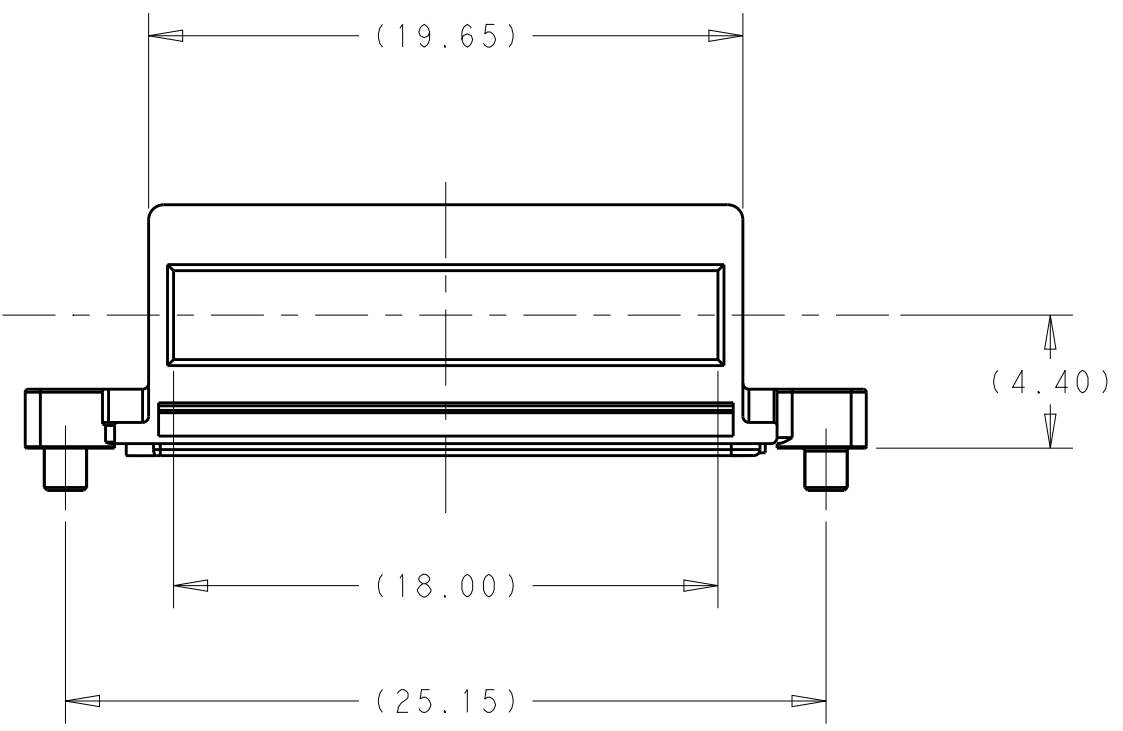
C

B

B

A

A





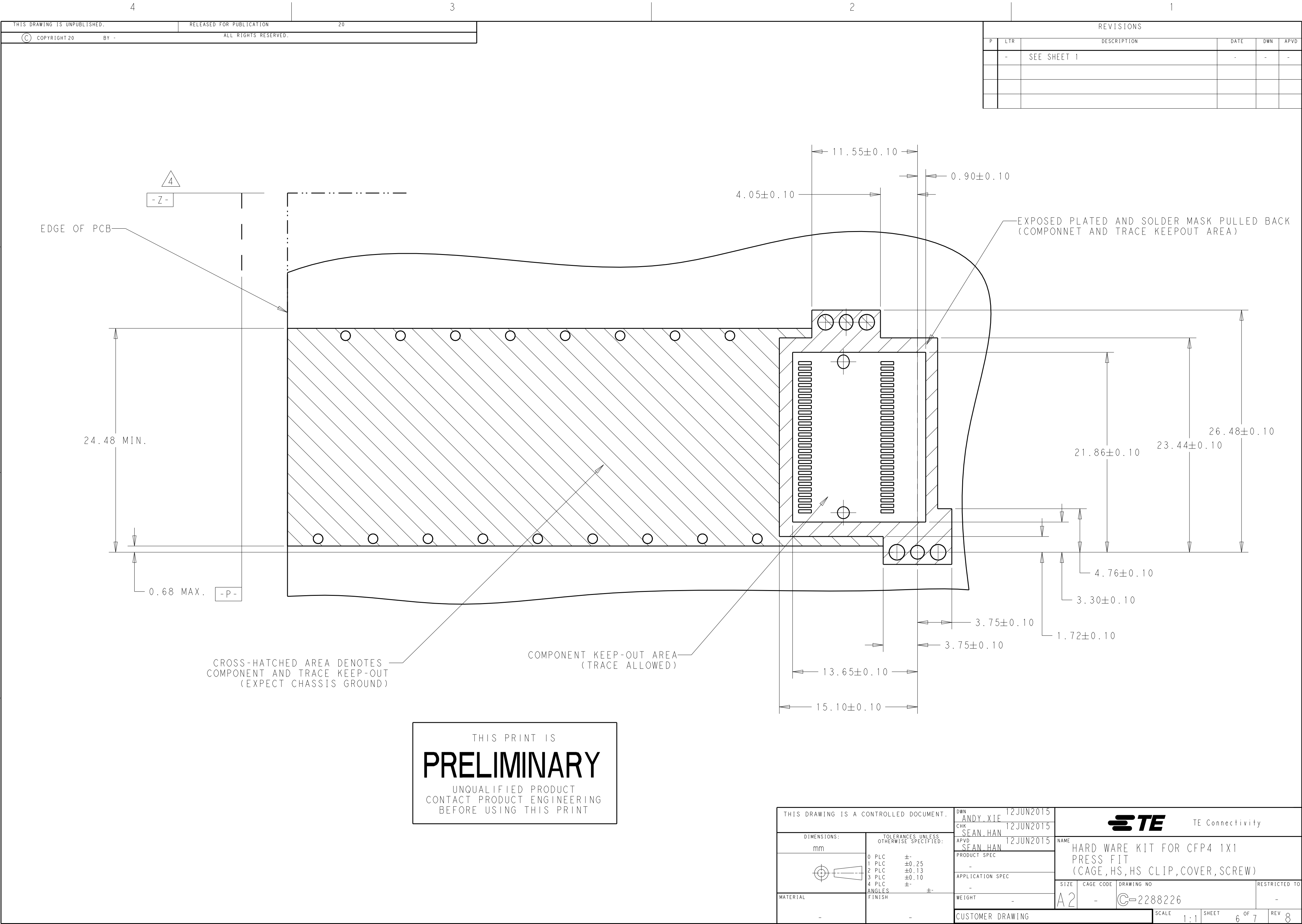
EM1204160±0.08

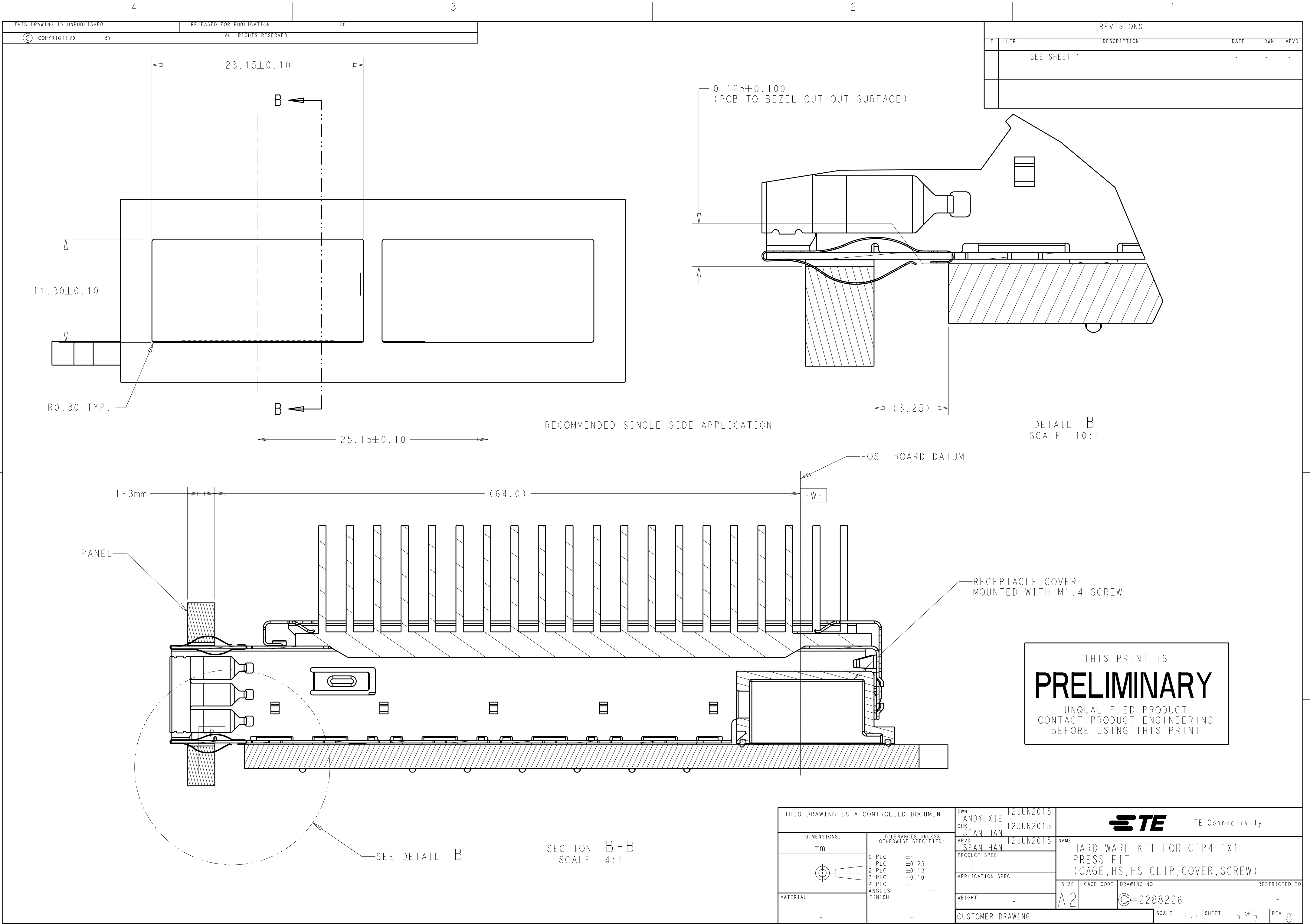
THIS PRINT IS
PRELIMINARY
UNQUALIFIED PRODUCT
CONTACT PRODUCT ENGINEERING
BEFORE USING THIS PRINT

THIS DRAWING IS A CONTROLLED DOCUMENT.		DWN ANDY.XIE 12JUN2015	TE Connectivity			
		CHK SEAN.HAN 12JUN2015				
		APVD SEAN.HAN 12JUN2015	NAME HARD WARE KIT FOR CFP4 1X1 PRESS FIT (CAGE,HS,HS CLIP,COVER,SCREW)			
DIMENSIONS: mm		PRODUCT SPEC -	SIZE A2	CAGE CODE -	DRAWING NO C-2288226	RESTRICTED TO -
TOLERANCES UNLESS OTHERWISE SPECIFIED: 0 PLC ±- 1 PLC ±0.25 2 PLC ±0.13 3 PLC ±0.10 4 PLC ±- ANGLES ±- FINISH		APPLICATION SPEC -	WEIGHT -	SCALE 1:1	SHEET 4 OF 7	REV 8
MATERIAL -		CUSTOMER DRAWING				



THIS DRAWING IS A CONTROLLED DOCUMENT.		DWN 12JUN2015 ANDY.XIE CHK 12JUN2015 SEAN.HAN APVD 12JUN2015 SEAN.HAN		 TE Connectivity	
DIMENSIONS: mm		TOLERANCES, UNLESS OTHERWISE SPECIFIED: 0 PLC ±- 1 PLC ±0.25 2 PLC ±0.13 3 PLC ±0.10 4 PLC ±- ANGLES ±-		NAME HARD WARE KIT FOR CFP4 1X1 PRESS FIT (CAGE, HS, HS CLIP, COVER, SCREW)	
		PRODUCT SPEC - APPLICATION SPEC -		SIZE A2	
MATERIAL -		FINISH -		CAGE CODE -	
		WEIGHT -		DRAWING NO C=2288226	
		CUSTOMER DRAWING		RESTRICTED TO -	
				SCALE 1:1	
				SHEET 5 of 7	
				REV 8	





REVISIONS					
P	LTR	DESCRIPTION	DATE	DWN	APVD
	-	SEE SHEET 1	-	-	-

THIS PRINT IS
PRELIMINARY
UNQUALIFIED PRODUCT
CONTACT PRODUCT ENGINEERING
BEFORE USING THIS PRINT

THIS DRAWING IS A CONTROLLED DOCUMENT.		DWN ANDY.XIE 12JUN2015	TE Connectivity			
DIMENSIONS: mm		CHK SEAN.HAN 12JUN2015				
TOLERANCES UNLESS OTHERWISE SPECIFIED:		APVD SEAN.HAN 12JUN2015	NAME HARD WARE KIT FOR CFP4 1X1 PRESS FIT (CAGE,HS,HS CLIP,COVER,SCREW)			
0 PLC ± 1 PLC ±0.25 2 PLC ±0.13 3 PLC ±0.10 4 PLC ± ANGLES ± FINISH		PRODUCT SPEC - APPLICATION SPEC - WEIGHT -	SIZE A2		CAGE CODE -	DRAWING NO C-2288226
MATERIAL -		CUSTOMER DRAWING		SCALE 1:1	SHEET 7 OF 7	REV 8