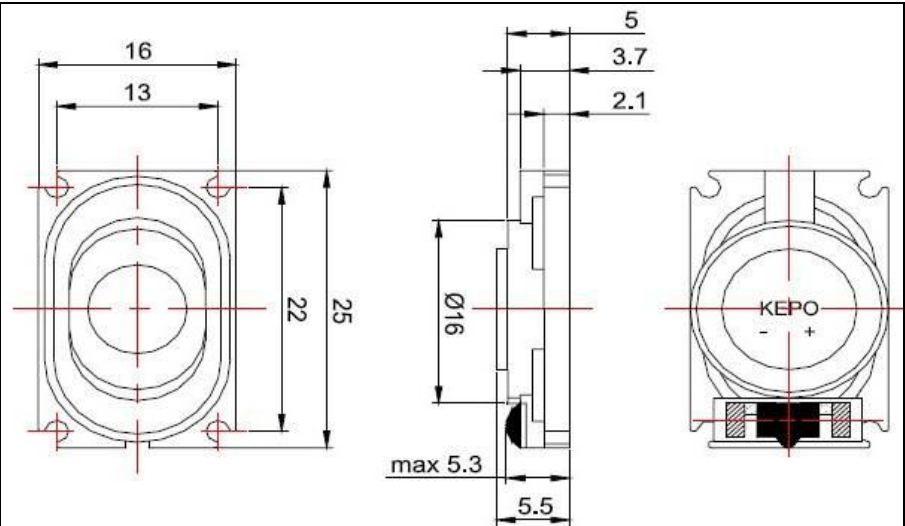


Technical datasheet: KP25x16SP4R4-5835

Specifications:

Input power	Rated 1W / Max. 1.2W
Impedance	$4\Omega \pm 15\%\Omega$ (1Vrms at 1KHz)
Frequency Range	0Hz to 18kHz
Resonant Frequency	$1000\text{Hz} \pm 20\%$ Hz
Distortion	<10% Max. at 1kHz/1Vrms
Out-diameter	25mm x 16mm
Height	5.5mm
Weight	2.5g
SPL	$89\text{dB} \pm 3\text{dB}$ (0.1W/0.1M at 1.0,1.2,1.5,2.0kHz average)
Buzz and Rattle	No audible buzzes, rattles when 2.0V sine wave signal is swept at frequency range.

Dimensions:



Frequency Response:

