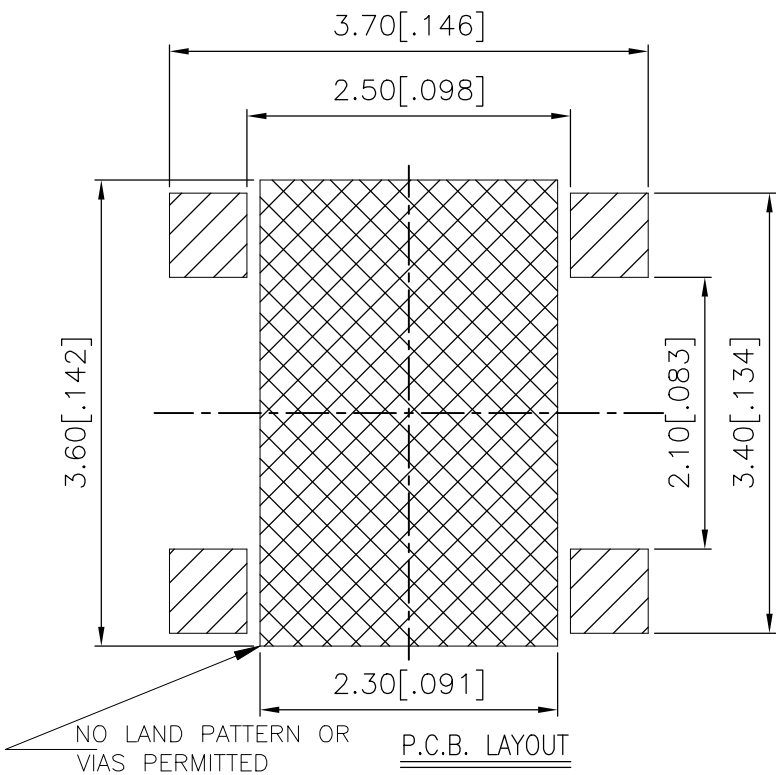
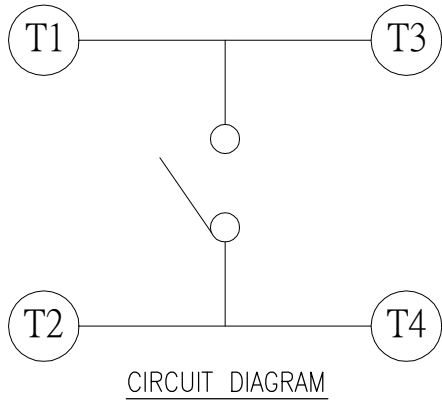
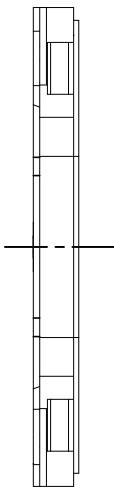
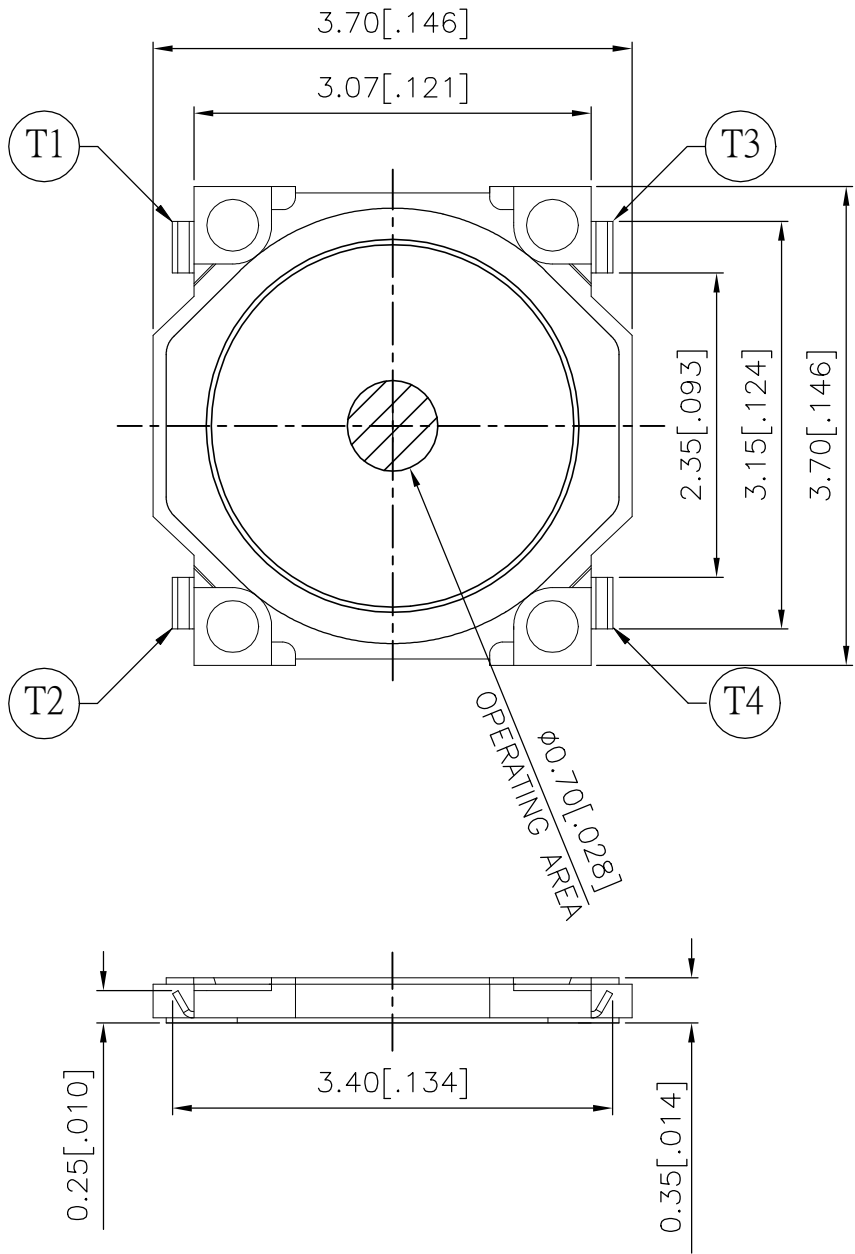


| REVISIONS | | | | | |
|-----------|-----|-------------|-----------|-----|------|
| P | LTR | DESCRIPTION | DATE | DWN | APVD |
| | 1 | NEW DRAWING | 04JUL2018 | GCM | AS |

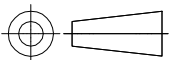
PRELIMINARY



| | | |
|----------------------|-------------------|-------------|
| 235±60 | USLPT3737AL5TR | 2337229-2 |
| 160±50 | USLPT3737AL2TR | 2337229-1 |
| ACTUATION FORCE (gf) | SMART PART NUMBER | PART NUMBER |

THIS DRAWING IS A CONTROLLED DOCUMENT.

DIMENSIONS:
mm [INCHES]



MATERIAL

TOLERANCES UNLESS
OTHERWISE SPECIFIED:

0 PLC ± -
1 PLC ± -
2 PLC ± 0.2 [.008]
3 PLC ± -
4 PLC ± -
ANGLES ± -

FINISH

DWN 04JUL2018

CHK GANESH C M

APVD 04JUL2018

PRODUCT SPEC

APPLICATION SPEC

WEIGHT

CUSTOMER DRAWING



TE Connectivity Ltd.

NAME
SWITCH, TACTILE, LOW-PROFILE, ULTRA-MINI,
3.7 x 3.7 x 0.35, J BEND

| SIZE | CAGE CODE | DRAWING NO | RESTRICTED TO |
|------|-----------|------------|---------------|
| A3 | 00779 | C-2337229 | — |

SCALE NTS SHEET 1 of 3 REV 1

PRELIMINARY

THIS DRAWING IS UNPUBLISHED.

RELEASED FOR PUBLICATION

© COPYRIGHT — TE Connectivity Ltd.

ALL RIGHTS RESERVED.

REVISIONS

| P | LTR | DESCRIPTION | DATE | DWN | APVD |
|---|-----|-------------|------|-----|------|
| | — | SEE SHEET 1 | — | — | — |

NOTES:

1. MATERIALS:

TERMINAL: COPPER ALLOY, SILVER FINISH
BASE: THERMOPLASTIC, UL 94V-0, BLACK
TAPE: POLYIMIDE
CONTACT: STAINLESS STEEL, SILVER FINISH

2. COMPLIANCE:

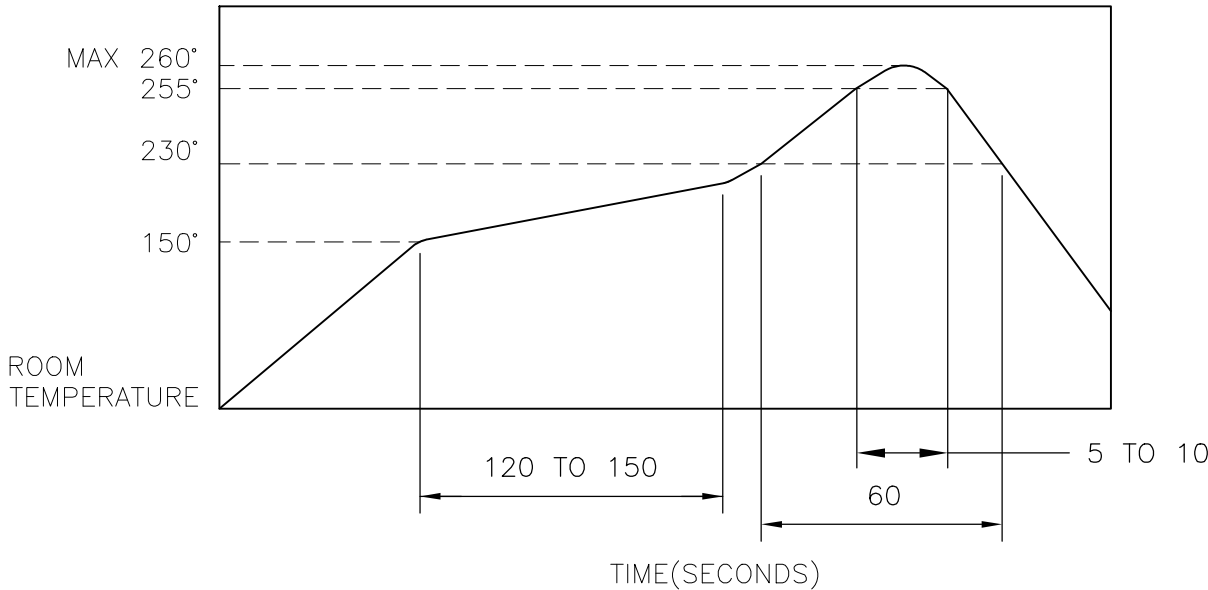
ALL MATERIALS AND FINISHES SHALL COMPLY WITH
EU DIRECTIVE 2002/95/EC OF 27JAN2003(RoHS)

3. SPECIFICATIONS:

RATING: 50 mA, 12V DC
CONTACT RESISTANCE: 100mΩ MAXIMUM (INITIAL)
INSULATION RESISTANCE: 100MΩ MINIMUM (INITIAL)
DIELECTRIC STRENGTH: 100 V AC, 1 MINUTE
OPERATING LIFE: 2337229-1 (160gf) = 500,000 CYCLES WITH LOAD
2337229-2 (235gf) = 50,000 CYCLES WITH LOAD
TRAVEL: 0.15±0.1 [.006±.004]
ACTUATION FORCE: 2337229-1 = 160±50gf
2337229-2 = 235±60gf
OPERATING TEMPERATURE: -40° TO 85°C
STORAGE TEMPERATURE: -20° TO 60°C (WITHIN TAPE PACKAGING)

4. SOLDER CONDITIONS:

SMT:



THE CONDITION NOTED ABOVE IS THE TEMPERATURE OF THE COPPER FOIL ON THE SURFACE OF THE PCB. THERE ARE CASES WHERE THE TEMPERATURE OF THE BOARD GREATLY DIFFERS FROM THE SURFACE OF THE SWITCH. DO NOT ALLOW THE SURFACE TEMPERATURE OF THE SWITCH TO EXCEED 260°C.

MANUAL SOLDERING:

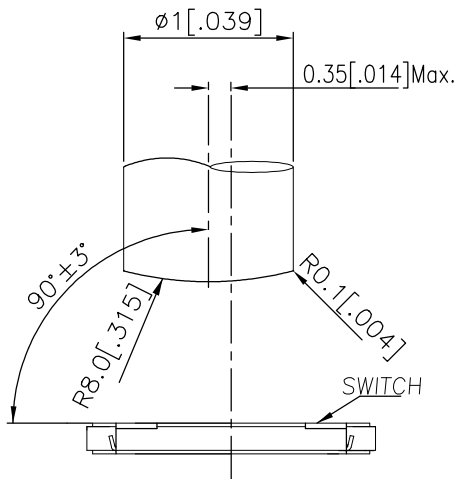
| | |
|---------------------------|-------------------|
| SOLDERING TEMPERATURE | 350°C MAXIMUM |
| CONTINUOUS SOLDERING TIME | 5 SECONDS MAXIMUM |

HANDLING PRECAUTIONS:

1. CARE SHOULD BE EXERCISED SO THAT FLUX FROM THE TOP SURFACE OF THE PRINTED CIRCUIT BOARD DOES NOT ADHERE TO THE SWITCH.
2. DO NOT WASH THE SWITCH

5. OPERATING PRECAUTIONS:

1. DO NOT ACTUATE THE SWITCH WITH EXCESSIVE FORCE
2. DISCONTINUE FORCE AFTER THE SWITCH HAS BEEN ACTUATED SO AS TO AVOID DEFORMATION OF THE COMPONENTS OF THE SWITCH. DEFORMATION OF THE COMPONENTS MAY CAUSE THE SWITCH TO MALFUNCTION.
3. ALIGN THE PLUNGER WITH THE SWITCH TO INSURE PROPER OPERATION



RECOMMENDED OPERATING CONDITIONS

6. STORAGE CONDITIONS:

AVOID THE FOLLOWING AS EXPOSURE MAY AFFECT THE PERFORMANCE AND/OR THE SOLDERABILITY OF THE SWITCH:

1. TEMPERATURE OF -10° TO 40°C AND 85% HUMIDITY
2. EXPOSURE TO CORROSIVE GAS
3. STORAGE OVER 6 MONTHS
4. EXPOSURE TO DIRECT SUNLIGHT

STORAGE CONDITIONS SHOULD PREVENT HEAVY IMPACT OR LOADING

AFTER OPENING THE PACKAGE, UNUSED SWITCHES MUST BE REPACKAGED IN A MOISTURE-PROOF AND AIRTIGHT ENVIRONMENT.

THIS DRAWING IS A CONTROLLED DOCUMENT.

DWN 04JUL2018

CHK 04JUL2018

ALEXANDER SHARPE

APVD 04JUL2018

ALEXANDER SHARPE

PRODUCT SPEC

APPLICATION SPEC

—

WEIGHT —

CUSTOMER DRAWING



TE Connectivity Ltd.

NAME
SWITCH, TACTILE, LOW-PROFILE, ULTRA-MINI,
3.7 x 3.7 x 0.35, J BEND

SIZE CAGE CODE DRAWING NO RESTRICTED TO

A3 00779 C-2337229

SCALE NTS SHEET 2 of 3 REV 1

DIMENSIONS:
mm [INCHES]

TOLERANCES UNLESS
OTHERWISE SPECIFIED:

0 PLC ± —
1 PLC ± —
2 PLC ± 0.2 [.008]
3 PLC ± —
4 PLC ± —
ANGLES ± —

MATERIAL

FINISH

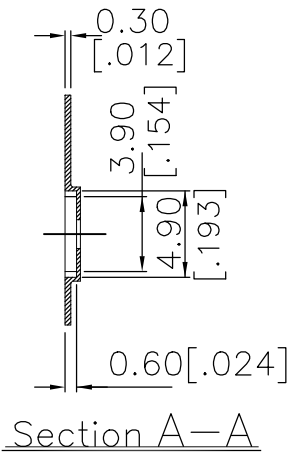
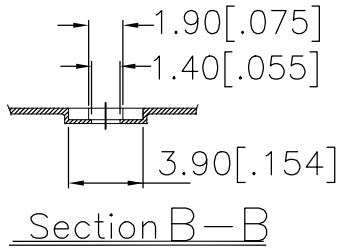
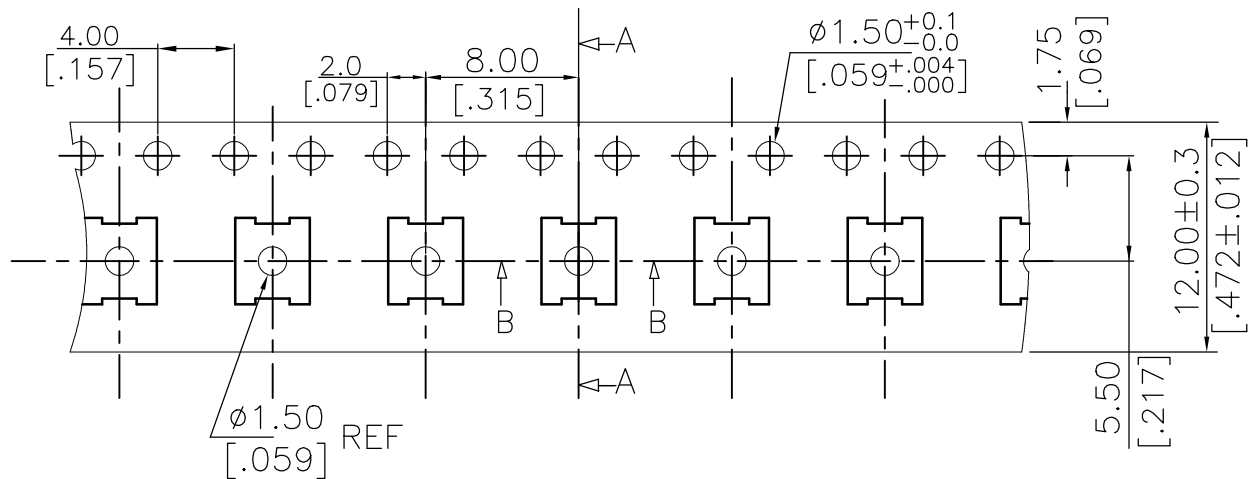
PRELIMINARY

| | |
|------------------------------------|--------------------------|
| THIS DRAWING IS UNPUBLISHED. | RELEASED FOR PUBLICATION |
| © COPYRIGHT — TE Connectivity Ltd. | ALL RIGHTS RESERVED. |

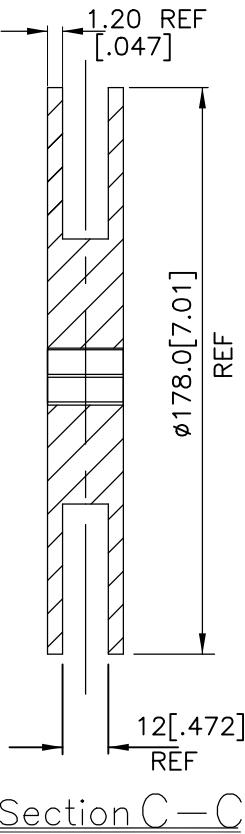
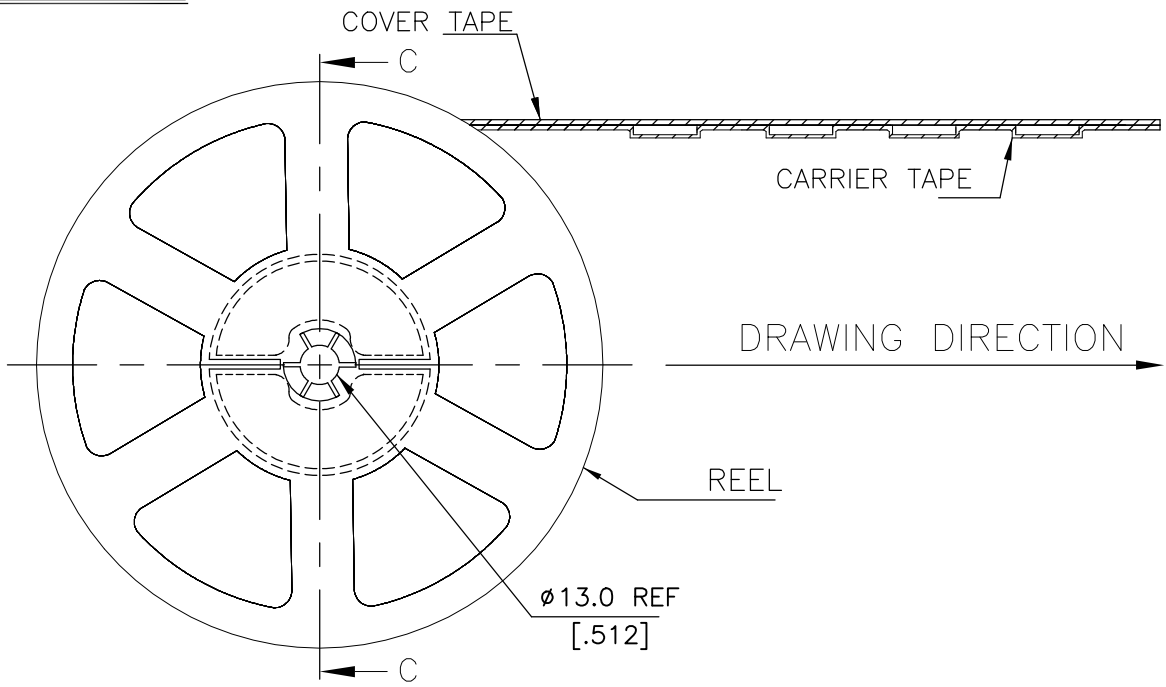
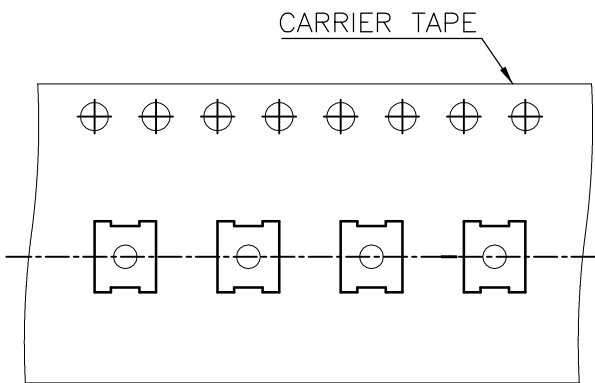
| REVISIONS | | | | | |
|-----------|-----|-------------|------|-----|------|
| P | LTR | DESCRIPTION | DATE | DWN | APVD |
| | — | SEE SHEET 1 | — | — | — |

PACKAGING:
3,000 SWITCHES PER REEL


THE DIMENSIONS OF CARRIER TAPE AND REEL



ORIENTATION OF PILOT HOLES



PRELIMINARY

| | | | | | |
|---|--|---------------------------------------|--|--------------------|-------------------------|
| THIS DRAWING IS A CONTROLLED DOCUMENT. | | DWN GANESH C M 04JUL2018 |  TE Connectivity Ltd. | | |
| DIMENSIONS: mm [INCHES] | | CHK ALEXANDER SHARPE 04JUL2018 | | | |
| TOLERANCES UNLESS OTHERWISE SPECIFIED: | | APVD ALEXANDER SHARPE 04JUL2018 | NAME SWITCH, TACTILE, LOW-PROFILE, ULTRA-MINI, 3.7 x 3.7 x 0.35, J BEND | | |
| MATERIAL | | PRODUCT SPEC | SIZE A3 | CAGE CODE 00779 | DRAWING NO C-2337229 |
| FINISH | | APPLICATION SPEC | RESTRICTED TO | | |
| CUSTOMER DRAWING | | WEIGHT | SCALE NTS | | |
| | | | SHEET 3 of 3 | | |
| | | | REV 1 | | |