

SEALED, ILLUMINATED ROCKER SWITCHES

K3
SEALED
ROCKERS

ATTRACTIVE & RUGGED FOR WET & DUSTY ENVIRONMENTS

The OTTO K3 rocker switch is a quality, precision switch designed to comply with standards established for appliance, marine (ignition protection) and off-road vehicles along with other demanding applications where rugged rocker switches are required.

K3 sealed rocker switches snap into industry-standard panel cutouts. Choose illuminated and printed legends, thru-panel drain option and switching compatibility from low level to 20 amps.

The K3 offers a choice of LED, incandescent and neon illumination. Legends can be stamped onto a non-illuminated button, stamped onto an illuminated lens or laser etched into the lens and backlit.

Available in standard and low level contact ratings, the K3 rockers will fit a wide range of applications. Expect a minimum of 25,000 cycles at a full rated load of 20 amps resistive or 15 amps inductive. 100,000 cycles mechanical. A full complement of switch operation is available including momentary and maintained action in 2 or 3-position switches in SPST, SPDT, SPTT, DPST and DPDT circuit arrangements.

OTTO can provide custom colors upon request. Value-added assemblies with wire leads are also available. Please consult the factory for assistance.

Features:

- **Sealed watertight per IP68S**
- **Snap-in panel mounting into industry standard panel cutout**
- **Optional panel seal gasket**
- **Thru-panel drain option**
- **LED, neon & incandescent lighting**
- **0.250" Quick Connect terminals**
- **Optional one-piece connector**
- **Optional terminal barriers**
- **Low level up to 20 amp switch**
- **Configurable Single Pole Triple Throw (SPTT) with external jumpers**
- **RoHS/WEEE/Reach compliant**



Standard Characteristics/Ratings:		
ELECTRICAL RATINGS:		
Load	Sea Level @ 12/28VDC	Sea Level @ 125VAC, 60Hz
Resistive	20A	16A
Inductive	15A	15A
Lamp	5A	5A
Motor	0.5HP @ 110VAC	
DWV	1050Vrms except across light terminals	
Low Level	10mA @ 30mV	
Electrical Life:	25,000 cycles	
LIGHTING:		
Light Source	Rating	
Incandescent	(VDC) 6V, 12V, 24V	
Neon	(VAC) 125V, 250V	
LED	(VDC) 2V, 6V, 12V, 24V	
Mechanical Life:	100,000 cycles	
Seal:	IP68S	
Operating Temp Range:	-40°C to +85°C	
MATERIALS:		
Case:	Thermoplastic, black	
Button:	Thermoplastic	
Terminals/Contact:	Brass, silver alloy with silver plate, gold flash for low level	
Terminal Hardware:	K3 series recommended Quick Connect terminals: AMP 60253-2 for 12-16 AWG AMP 42100-2 for 14-18 AWG	
Mounting Hardware:	None provided	

K3 SERIES PART NUMBER CODE

Part Number Code Continued Below

K3 **X** **X**

Base Options

- A.** With Keying Pin Only
Standard Rating
Silver Plate
- B.** Without Barriers or Pin
Standard Rating
Silver Plate
- C.** With Terminal Barriers Only
Standard Rating
Silver Plate
- D.** With Keying Pin Only
Low Level Rating
Gold Plate
- E.** Without Barriers or Pin
Low Level Rating
Gold Plate
- F.** With Terminal Barriers Only
Low Level Rating
Gold Plate
- G.** With Keying Pin Only
Standard Rating
No Plate
- H.** Without Barriers or Pin
Standard Rating
No Plate
- J.** With Terminal Barriers Only
Standard Rating
No Plate

Case Style/Button Color

- A.** Case With Drain Holes
Button Color: Black
 - B.** Case Without Drain Holes
Button Color: Black
 - C.** Case With Drain Holes
Button Color: Red
 - D.** Case Without Drain Holes
Button Color: Red
 - E.** Case With Drain Holes
Button Color: White
 - F.** Case Without Drain Holes
Button Color: White
- NOTE: Switch case is black for all options below:
1. Case With Drain Holes
Button Not Included
 2. Case Without Drain Holes
Button Not Included

Switch Action/Circuit

	Position "A"	Position "B"	Position "C"	Circuit
1A.	3-4	NONE	OFF	SPST
2A.	3-4/8-9	NONE	OFF	DPST
1B.	3-4	NONE	3-2	SPDT
2B.	3-4/8-9	NONE	3-2/8-7	DPDT
1C.	(3-4)	NONE	OFF	SPST
2C.	(3-4)/(8-9)	NONE	OFF	DPST
1D.	(3-4)	NONE	3-2	SPDT
2D.	(3-4)/(8-9)	NONE	3-2/8-7	DPDT
1E.	(3-4)	OFF	(3-2)	SPDT
2E.	(3-4)/(8-9)	OFF	(3-2)/(8-7)	DPDT
1F.	3-4	OFF	3-2	SPDT
2F.	3-4/8-9	OFF	3-2/8-7	DPDT
1G.	(3-4)	OFF	3-2	SPDT
2G.	(3-4)/(8-9)	OFF	3-2/8-7	DPDT

Special Circuits

	Position "A"	Position "B"	Position "C"	Special Circuits
1H.	3-4/8-9	8-9	OFF	ON/ON/OFF
1J.	3-4/8-9	8-9	NONE	ON/ON/NONE
1K.	(3-4)/(8-9)	8-9	OFF	(ON)/ON/OFF
1L.	(3-4)/(8-9)	8-9	NONE	(ON)/ON/NONE
1M.	3-4/8-9	3-2/8-9	3-2/8-7	ON/ON/ON
1N.	(3-4)/(8-9)	3-2/8-9	3-2/8-7	(ON)/ON/ON
1P.	(3-4)/(8-9)	3-2/8-9	(3-2)/(8-7)	(ON)/ON/(ON)
2R.	3-4/8-9	OFF/8-9	OFF/OFF	ON/OFF/OFF
2S.	(3-4)/8-9	OFF/8-9	OFF/OFF	(ON)/OFF/OFF

NOTE: () denotes momentary action.

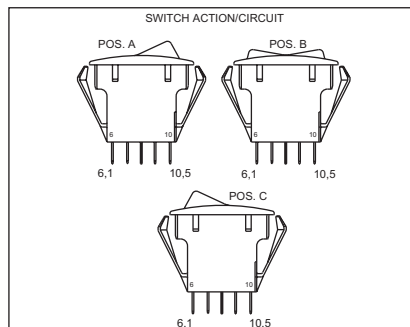
Light Source Type

- A.** No Illumination
- B.** 6V Incandescent
- C.** 12V Incandescent
- D.** 24V Incandescent
- E.** 125VAC Neon
- F.** 250VAC Neon
- G.** 2V Red LED
- H.** 2V Green LED
- J.** 2V Amber LED
- K.** 6V Red LED
- L.** 6V Green LED
- M.** 6V Amber LED
- N.** 12V Red LED
- P.** 12V Green LED
- Q.** 12V Amber LED
- R.** 24V Red LED
- S.** 24V Green LED
- T.** 24V Amber LED

Light Circuit

Circuit	Terminal Connections
A. None	None
B. Dep. in "A"	1(-) & 4(+)
C. Dep. in "C"	2(+) & 5(-)
D. Ind. in "A"	1(-) & 6(+)
E. Ind. in "C"	5(-) & 10(+)
F. Dep. in "A"	1(-) & 4(+)
J. Dep. in "C"	2(+) & 5(-)
G. Dep. in "A"	1(-) & 4(+)
L. Ind. in "C"	5(-) & 10(+)
H. Ind. in "A"	1(-) & 6(+)
N. Dep. in "C"	2(+) & 5(-)
J. Ind. in "A"	1(-) & 6(+)
Q. Ind. in "C"	5(-) & 10(+)

NOTE: Polarity only applies to LED circuits.



K3 PART NUMBER CODE - CONTINUED FROM ABOVE

X

Lens Color

- Position "A"**
- 1. Transparent Red
- 2. Transparent Green
- 3. Transparent Amber ①
- 4. Clear ①
- 5. Translucent White ②
- Z. No Lens ③

NOTE: It is not recommended to use green LEDs with translucent white lenses. This will reduce light intensity. Use clear lenses with green LEDs for maximum light intensity.

- ① Recommended for neon lamps.
- ② Special Order: Ultra bright green LED to be used with translucent white lenses.
- ③ Legend colors "B" & "D" are only available on lens color "Z".

STOP HERE for
lighted switches
without legends.

Example: K3AAIFNH-44

XX

Legend Style

- Position "A"**
 - ZZ. No Legend
- NOTE: For all other legend options, refer to the legend table on page 162, find the two digit code and enter the code in the appropriate position(s).

XX

Legend Color

- Position "A"**
- 1. Red
- 2. Black
- 9. White
- B. Backlight/Daylight White ④
- D. Backlight/Deadfront ④
- Z. No Legend

④ For legend color "B" and "D", please use button color "A" & "B" and lens color "Z" for each position.

X

Legend Color

- Position "C"**
- 1. Red
- 2. Black
- 9. White
- B. Backlight/Daylight White ④
- D. Backlight/Deadfront ④
- Z. No Legend

X

Legend Orientation

- Position "A"**
- Position "C"**
- 1. Std.

A	C
---	---
- 2. 90°

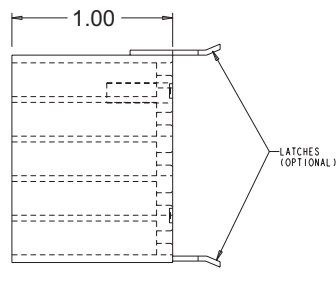
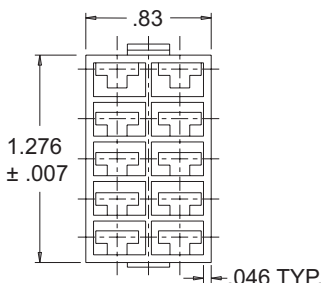
⌞	⌞
---	---
- 3. 180°

⌞	⌞
---	---
- 4. 270°

⌞	⌞
---	---

STOP HERE for
unlighted switches
without legends.

Example: K3AAIFAA



K3 Connector
P/N 801775-2A Without Latches
P/N 801775-2B With Latches

Panel Seal Gasket
P/N 807037
Order separately for use with switches with-
out drain holes.

Panel Plug
See Panel Plug (PP) page 167.

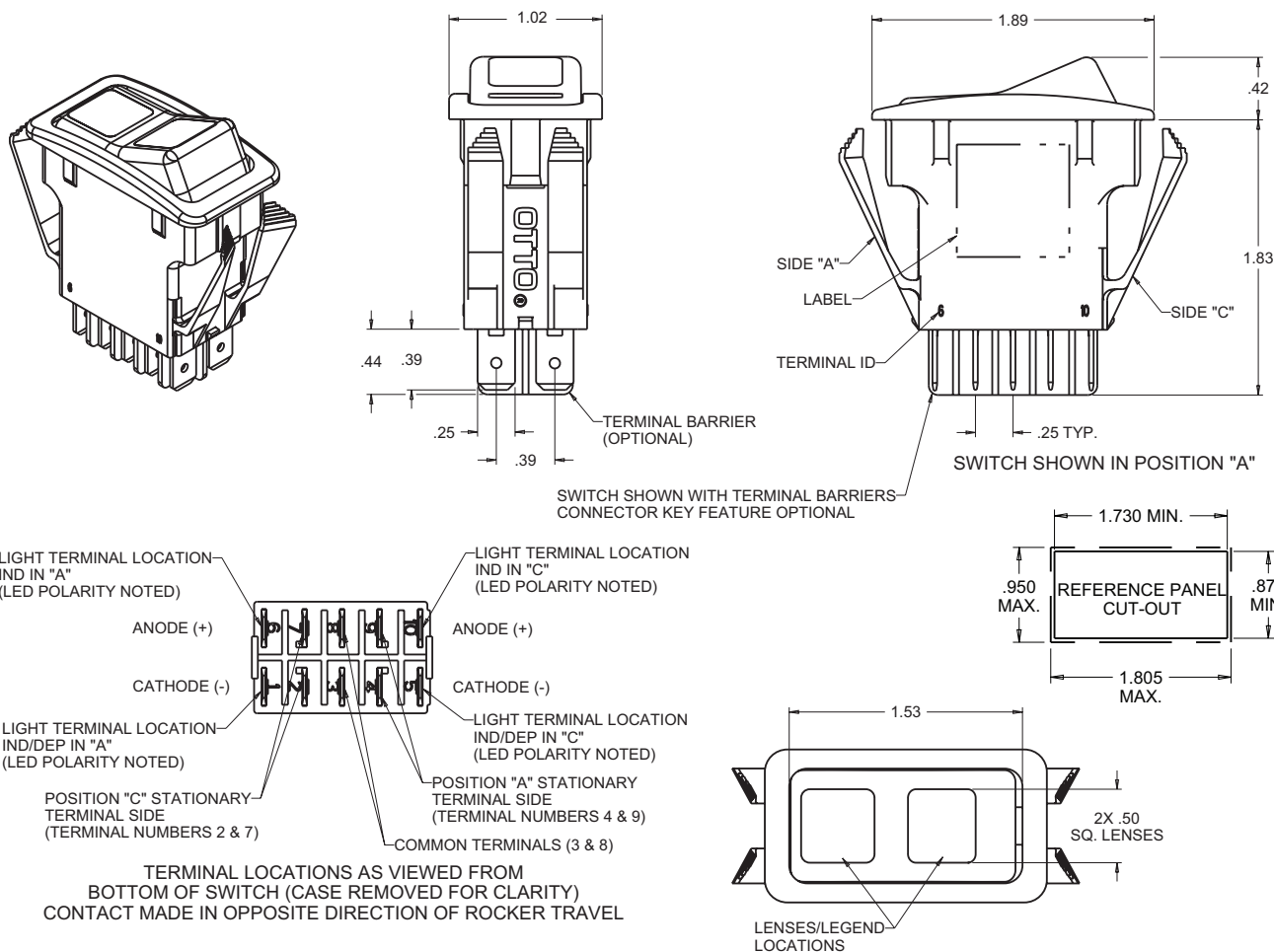
• K3 panel plugs available as shown on page 160.

Recommended Quick Connect Terminals:
AMP 60253-2 for 12-16 AWG
AMP 42100-2 for 14-18 AWG

SEALED, ILLUMINATED ROCKER SWITCHES

K3
SEALED
ROCKERS

SNAP-IN PANEL MOUNTING, ATTRACTIVE & RUGGED FOR WET & DUSTY ENVIRONMENTS



<p>K3...1M...</p> <p>POS "A" POS "B" POS "C"</p> <p>SPECIAL CIRCUIT - ON-ON-ON SCHEMATIC</p>		<p>K3...2A...</p> <p>DPST-ON-NONE-OFF SCHEMATIC</p>		<p>K3...2B...</p> <p>DPDT-ON-NONE-ON SCHEMATIC</p>		<p>K3...2C...</p> <p>DPST-(ON)-NONE-OFF SCHEMATIC</p>		<p>K3...2D...</p> <p>DPDT-(ON)-NONE-ON SCHEMATIC</p>	
<p>GENERAL SCHEMATIC INFORMATION</p> <p>○ INDICATES MAINTAIN ACTION (FIXED POSITION)</p> <p>▼ INDICATES MOMENTARY ACTION (AUTOMATIC RETURN POSITION)</p> <p>FOR OTHER LIGHTING SCHEMATICS REPLACE FOLLOWING SYMBOLS:</p> <p>⬤ INCANDESCENT (REPLACE RESISTOR & LED)</p> <p>⬤ NEON (REPLACE LED)</p>		<p>K3...2E...</p> <p>DPDT-(ON)-OFF-(ON) SCHEMATIC</p>		<p>K3...2F...</p> <p>DPDT-ON-OFF-ON SCHEMATIC</p>		<p>K3...2G...</p> <p>DPDT-(ON)-OFF-ON SCHEMATIC</p>		<p>K3...2BNC-Z</p> <p>DPDT-ON-NONE-ON SCHEMATIC W/DEPENDENT LED IN "A"</p>	
<p>K3...2BNC-Z</p> <p>DPDT-ON-NONE-ON SCHEMATIC W/DEPENDENT LED IN "A"</p>		<p>K3...2BNE-Z</p> <p>DPDT-ON-NONE-ON SCHEMATIC W/DEPENDENT LED IN "C"</p>		<p>K3...2BNF...</p> <p>DPDT-ON-NONE-ON SCHEMATIC W/DEPENDENT LED IN "A" & "C"</p>		<p>K3...2BNG...</p> <p>DPDT-ON-NONE-ON SCHEMATIC W/DEPENDENT LED IN "A" & INDEPENDENT LED IN "C"</p>		<p>K3...2BNH...</p> <p>DPDT-ON-NONE-ON SCHEMATIC W/INDEPENDENT LED IN "A" & DEPENDENT LED IN "C"</p>	
<p>K3...2BNJ...</p> <p>DPDT-ON-NONE-ON SCHEMATIC W/INDEPENDENT LED IN "A" & "C"</p>									