

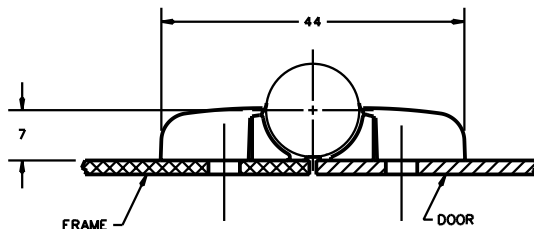
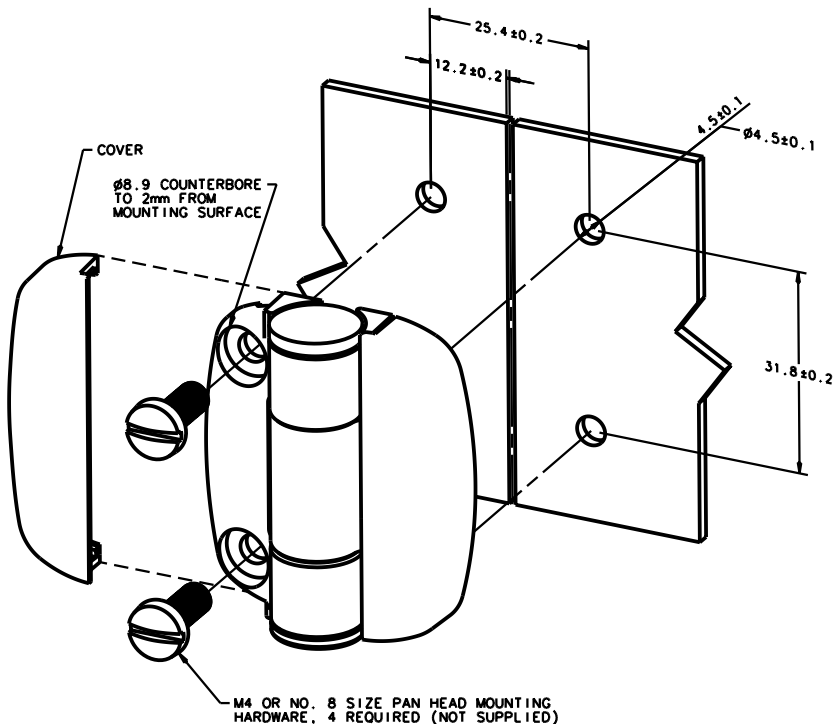
REV.	DATE	DRAWN	CHKD	SCALE	DRAWING NUMBER
A	10JUN96	AAB		1.5:1	J-G6-1
B	08JUL96	AAB			
C	21APR97	VP			
D	05DEC97	SL			
E	26AUG99	SWD			

ITEM	REVISION	MATERIAL	COLOR	SEE ASSEMBLY DESCRIPTION TABLE
OUTER LEAF	PRN: G6-02	NYLON		
INNER LEAF	PRN: G6-03	NYLON		
COVERS	PRN: G6-07A	NYLON		
HINGE PIN	PRN: G6-08	ALUMINUM		
HINGE PIN INSERT	PRN: G6-12	ALUMINUM		
SPRING		URETHANE	BLACK	

MILLIMETER DIMENSIONS	THIRD ANGLE PROJECTION	PAPER SIZE
DIMENSIONS WITHOUT TOLERANCES ARE FOR REFERENCE ONLY.		A3

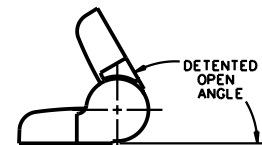
INSTALLATION INSTRUCTIONS

1. PREPARE INSTALLATION HOLES AS SHOWN.
2. MOUNT HINGE SUB-ASSEMBLY WITH APPROPRIATE FASTENING HARDWARE. MAXIMUM RECOMMENDED TIGHTENING TORQUE = 225 N.cm (20 in.lbs).
3. SNAP COVERS IN PLACE TO HIDE MOUNTING HARDWARE.



ASSEMBLY DESCRIPTION

ASSEMBLY PART NUMBER	DETENTED OPEN ANGLE	COLOR
G6-5-1	120°	BLACK
G6-0-1	FREE-SWINGING	BLACK
G6-0-3	FREE-SWINGING	WHITE
G6-5-3	120°	WHITE



SCALE 1:1

NOTES:

- A: DETENT HINGE ALSO HAS DETENTED OPEN ANGLE AT 170°, AND BIASES THE DOOR CLOSED AGAINST A FRAME.
- B: HINGE ASSEMBLY PART NUMBERS SHOWN CONSIST OF ONE HINGE SUBASSEMBLY AND TWO COVERS, SHIPPED SEPARATELY, BULK.
- C: FOR ONE HINGE SUB-ASSEMBLY AND TWO COVERS PACKAGED IN A POLY BAG, ADD -1 TO THE PART NUMBERS SHOWN ABOVE (EX. G6-5-1-1).
- D: HINGE SUB-ASSEMBLIES AND COVERS ARE DESIGNED TO ACCOMMODATE M4 OR NO. 8 SIZE PAN HEAD MOUNTING HARDWARE (NOT SUPPLIED).

