

## SPECIFICATIONS

### Mechanical

**Contact Retention Force:** 0.30Kg (0.66Lbs) min. per pin

**Durability:** 25 Cycles

**Insertion Force(Conn. Into PCB):** 7.6Kg (16.76Lbs)

**Unmating Force(Per Contact pair):** 14g min.

### Electrical

**Current Rating:** 0.5 Amps max.

**Insulation Resistance:** 1M $\Omega$  min. at 500V DC

**Dielectric Withstanding Voltage:** 500V DC at Sea Level

**Low Level Contact Resistance:** 30m $\Omega$  max. initial, Change not greater than 20m $\Omega$  Max.

### Physical

**Housing:** Thermoplastic, UL 94V-0 rated in Black Color

**Contact:** Copper alloy

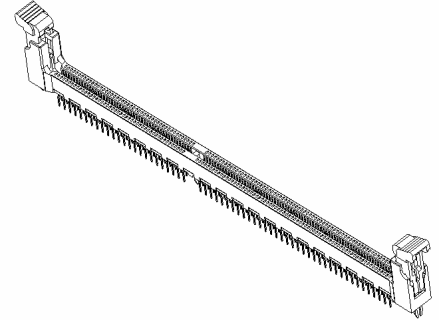
**Ejector:** Thermoplastic, UL 94V-0 rated in White Color

**Metal Hold Down:** Copper alloy

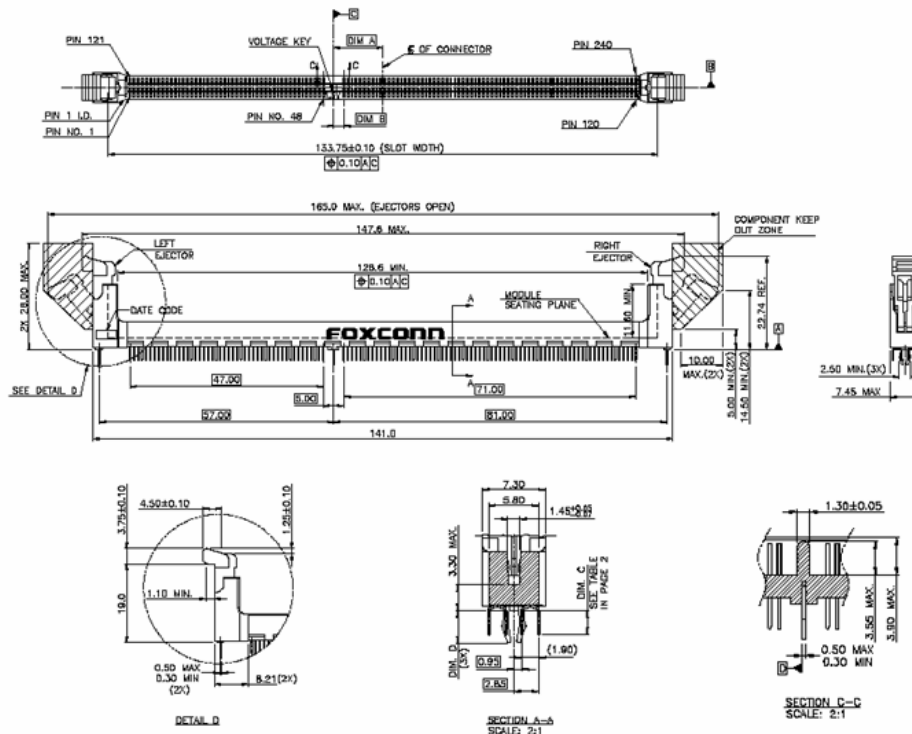
**Operating Temperature:** 0°C to +85°C

## DDR3 Connector

**ATH40 Series**  
**Vertical Type**  
**1.00mm [.039"] Pitch**  
**240 Pos.**



## DRAWING



## ORDERING INFORMATION

PRODUCT NO. : A TH \* \* \* - H 3 \* E - \* \*

MEMORY SOCKET

DDR III DIMM

VERTICAL 1.00 MM PITCH.

Q'TY OF CONTACTS:  
40=240 POSITION

PLATING TYPE  
4F=LEAD FREE  
4M=MATTE TIN  
& LEAD FREE

HOUSING AND EJECTOR COLOR  
B : BLACK HOUSING WITH WHITE EJECTOR  
L : BLUE HOUSING WITH WHITE EJECTOR  
V : WHITE HOUSING WITH WHITE EJECTOR  
D : BLACK HOUSING WITH BLACK EJECTOR  
G : GREEN HOUSING WITH WHITE EJECTOR  
4: BLUE HOUSING WITH BLACK EJECTOR

CONTACT AREA GOLD PLATING  
1=GOLD FLASH  
3=30  $\mu$ "  
7=15  $\mu$ "

TAIL LENGTH:  
0=3.18 MM (.125")  
1=2.67 MM (.105")  
4=2.40 MM (.094")

PART NUMBER	NO. OF POSITION	VOLTAGE MARKING	KEY POSITION	DIM. A	DIM. B	DIM. C CONTACT TAIL	DIM. D METAL BOARD LOCK
ATH401*-H3*E-4*	240	1.5V	CENTER OFFSET	12.00	2.50	2.67 $\pm$ 0.25 FOR 1.57 (.062") PCB THICKNESS	3.78 $\pm$ 0.25 FOR 1.57 (.062") PCB THICKNESS
ATH400*-H3*E-4*	240	1.5V	CENTER OFFSET	12.00	2.50	3.18 $\pm$ 0.25 FOR 2.36 (.093") PCB THICKNESS	4.57 $\pm$ 0.25 FOR 2.36 (.093") PCB THICKNESS
ATH404*-H3*E-4*	240	1.5V	CENTER OFFSET	12.00	2.50	2.40 $\pm$ 0.25 FOR 1.57 (.062") PCB THICKNESS	3.78 $\pm$ 0.25 FOR 1.57 (.062") PCB THICKNESS