

Patch panels - VS-PP-R-1XRJ45-SCC - 1416790

Please be informed that the data shown in this PDF Document is generated from our Online Catalog. Please find the complete data in the user's documentation. Our General Terms of Use for Downloads are valid (<http://phoenixcontact.com/download>)



Patch panel, RJ45, DIN rail mounting, IP20, 1 slot, with spring-cage connection, CAT5e, option of shielding via jumpers

Similar figure



Ethernet

Key Commercial Data

Packing unit	1 pc
Weight per Piece (excluding packing)	60.000 g
Custom tariff number	85366990
Country of origin	Germany

Technical data

Mechanical characteristics

Connection method	Spring-cage connection
Number of slots	1
Minimum external conductor diameter	5 mm
Maximum external conductor diameter	8.5 mm
Conductor cross section	0.2 mm² ... 1.5 mm² (solid)
	0.2 mm² ... 1 mm² (flexible)
Weight	67.2 g
Flammability rating according to UL 94	V0

Ambient conditions

Ambient temperature (operation)	-15 °C ... 50 °C
---------------------------------	------------------

Material data

Housing material	PVC
------------------	-----

Electrical characteristics

Patch panels - VS-PP-R-1XRJ45-SCC - 1416790

Technical data

Electrical characteristics

Number of positions	8
Transmission characteristics (category)	CAT5 (IEC 11801:2002)
Rated current	1 A
Rated voltage (III/3)	60 V

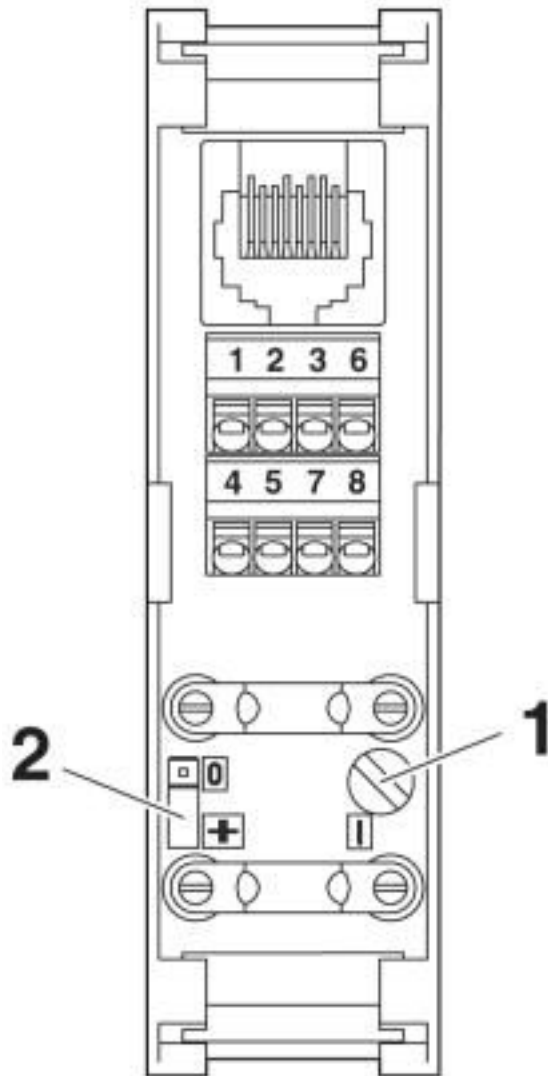
Standards and Regulations

Flammability rating according to UL 94	V0
--	----

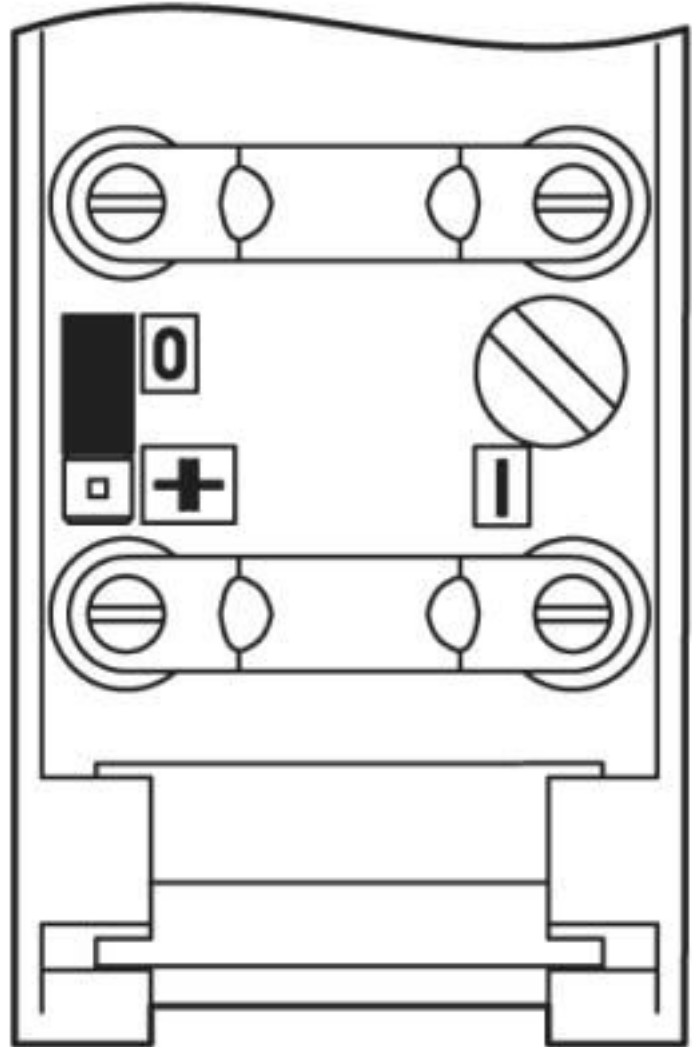
Drawings

Patch panels - VS-PP-R-1XRJ45-SCC - 1416790

Schematic diagram

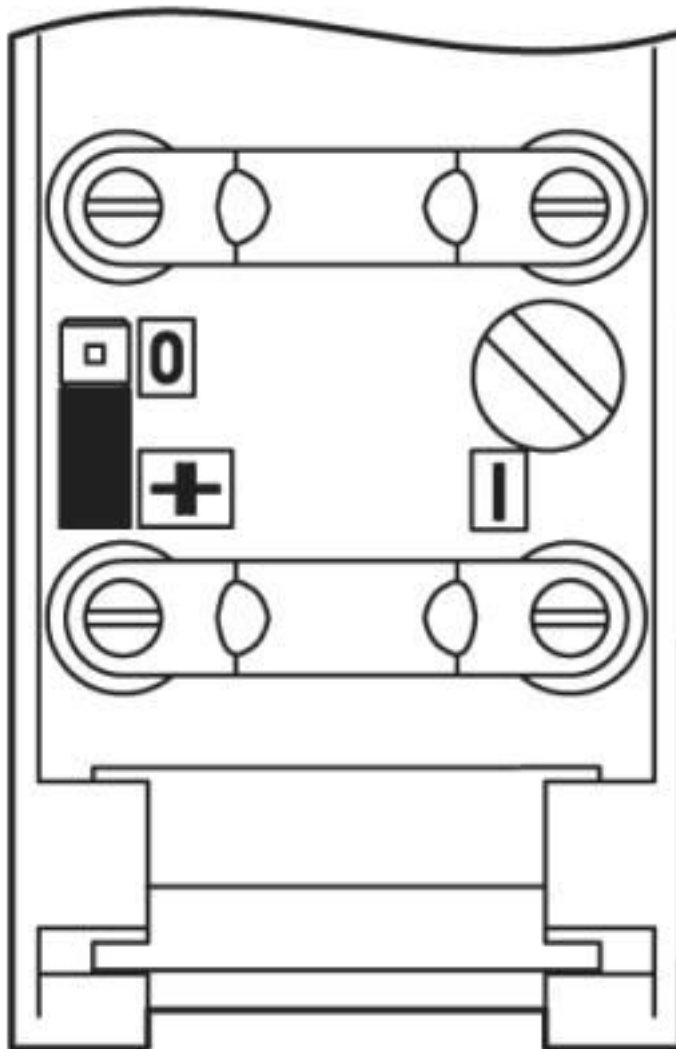


Functional drawing



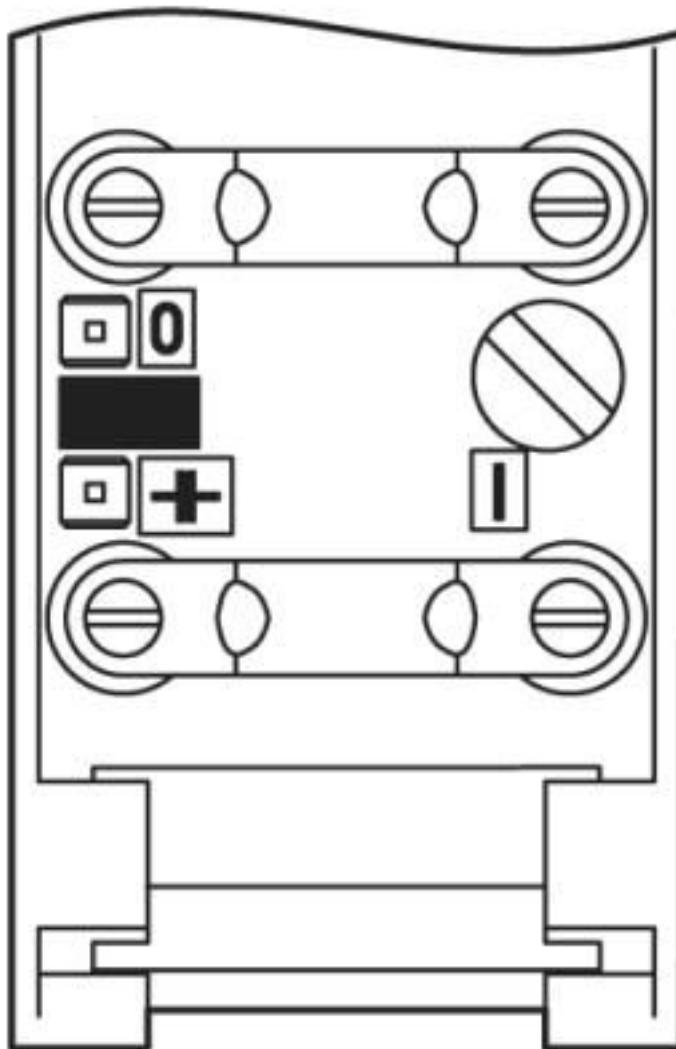
Patch panels - VS-PP-R-1XRJ45-SCC - 1416790

Functional drawing



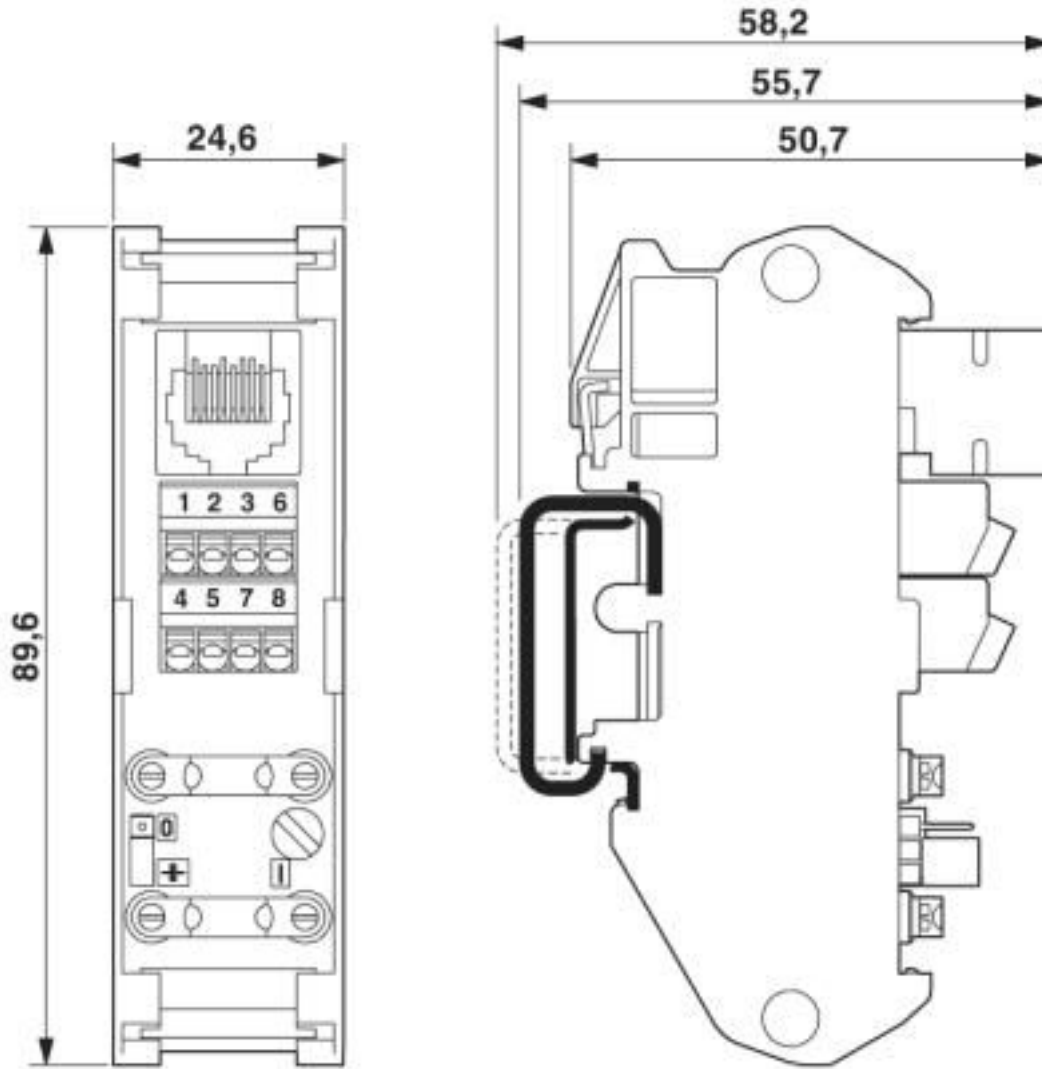
Patch panels - VS-PP-R-1XRJ45-SCC - 1416790

Functional drawing



Patch panels - VS-PP-R-1XRJ45-SCC - 1416790

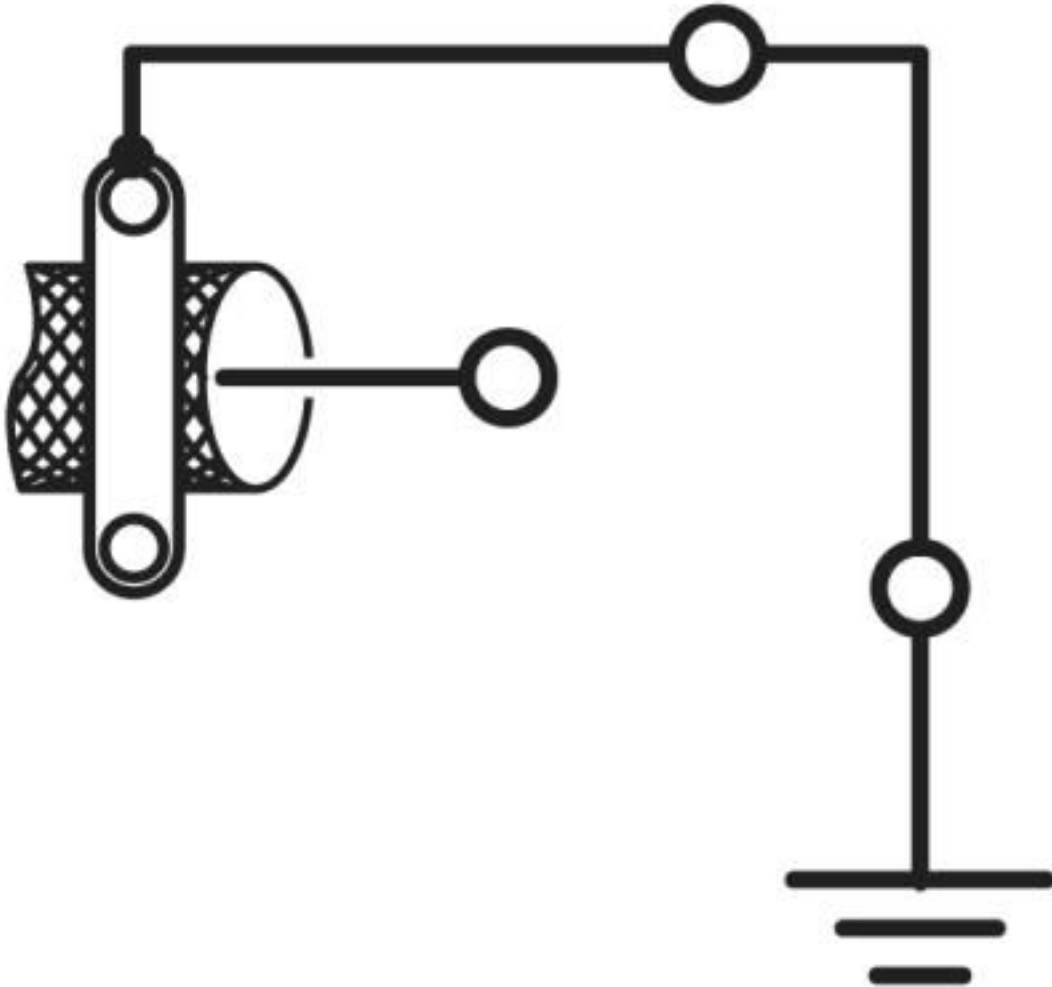
Dimensional drawing



RJ45 patch panel

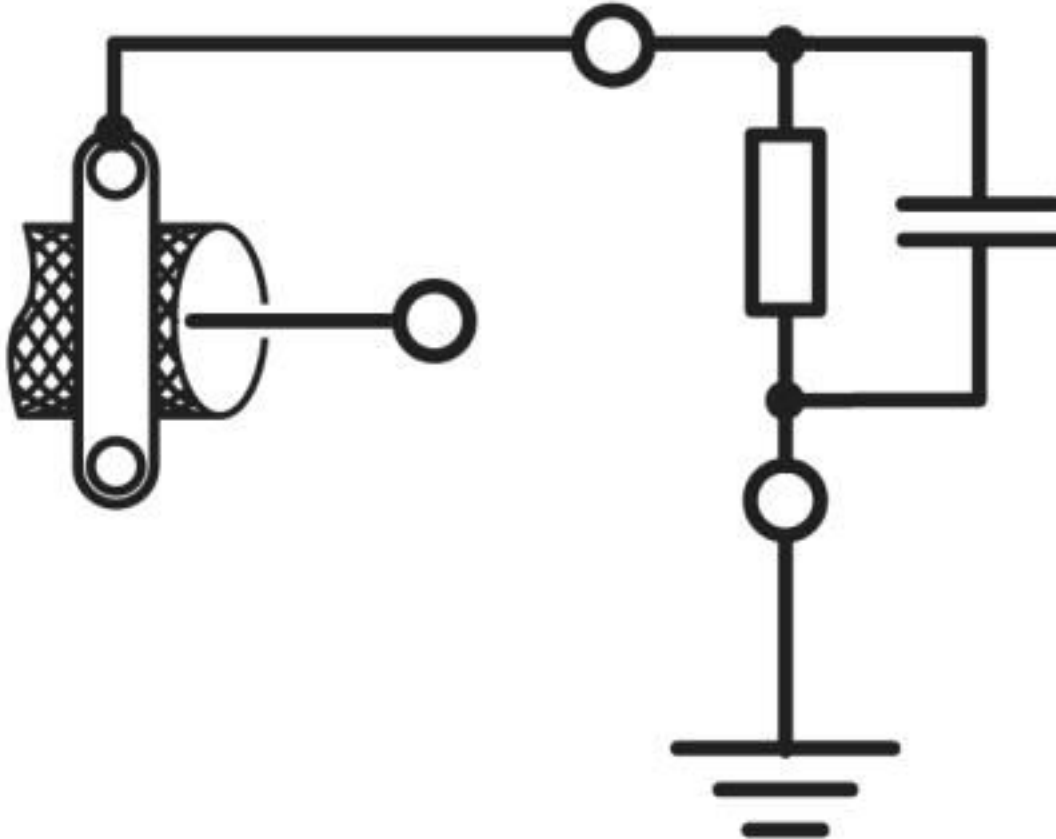
Patch panels - VS-PP-R-1XRJ45-SCC - 1416790

Circuit diagram



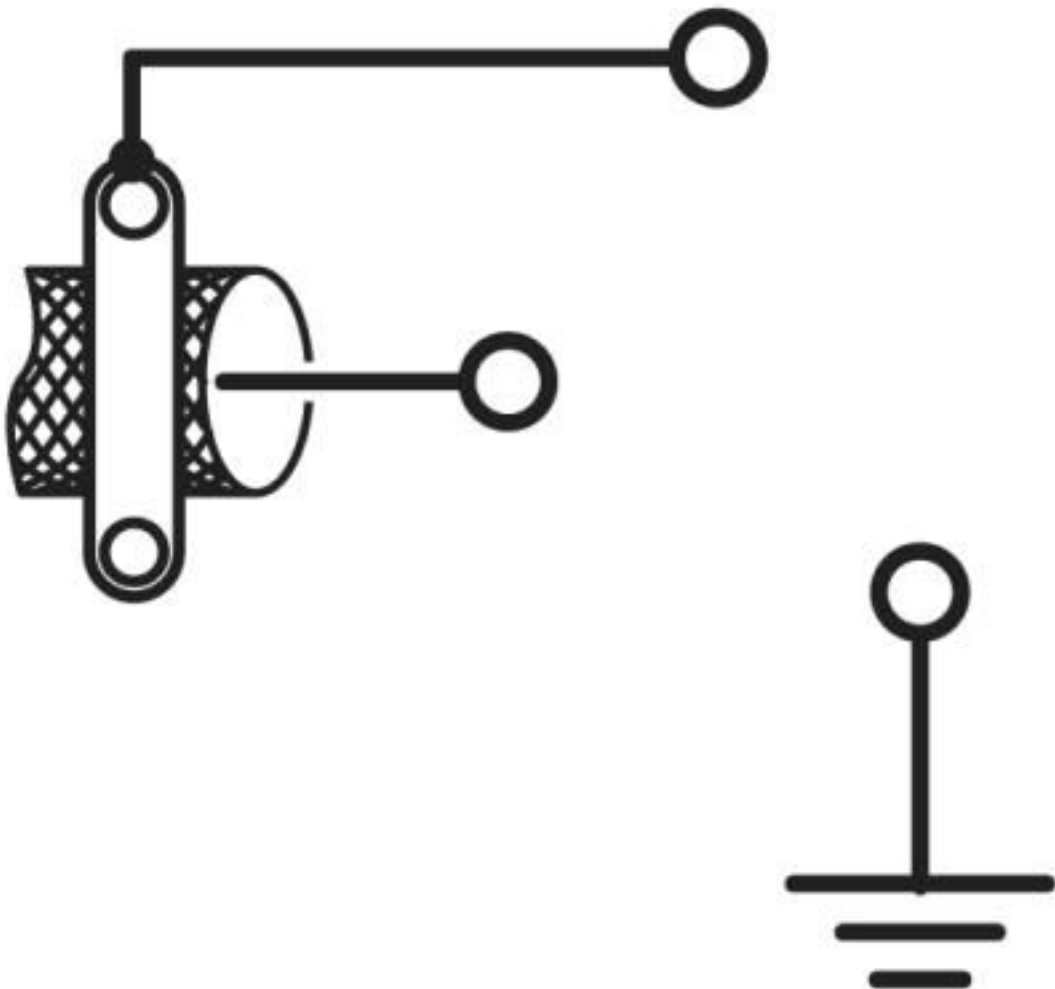
Patch panels - VS-PP-R-1XRJ45-SCC - 1416790

Circuit diagram



Patch panels - VS-PP-R-1XRJ45-SCC - 1416790

Circuit diagram



Classifications

eCl@ss

eCl@ss 4.0	27140815
eCl@ss 4.1	27140815
eCl@ss 5.0	19030109
eCl@ss 5.1	19030109
eCl@ss 6.0	19170107
eCl@ss 7.0	19170112

ETIM

ETIM 2.0	EC000200
----------	----------

Patch panels - VS-PP-R-1XRJ45-SCC - 1416790

Classifications

ETIM

ETIM 3.0	EC001128
ETIM 4.0	EC001128
ETIM 5.0	EC001128

UNSPSC

UNSPSC 6.01	31261501
UNSPSC 7.0901	31261501
UNSPSC 11	31261501
UNSPSC 12.01	31261501
UNSPSC 13.2	31261501