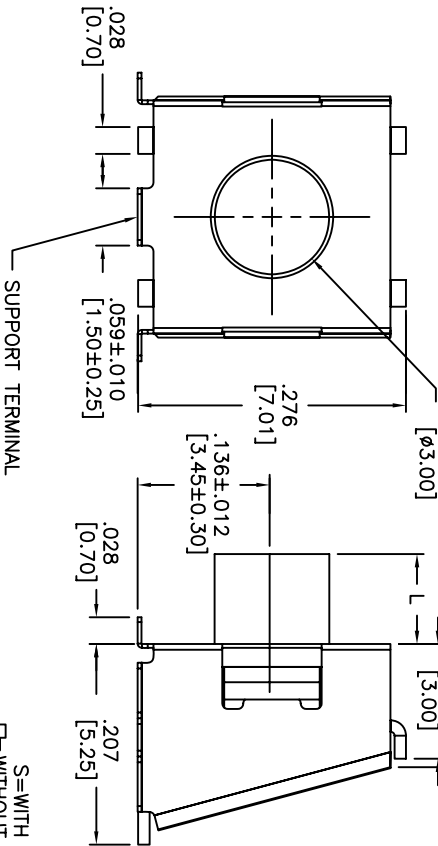
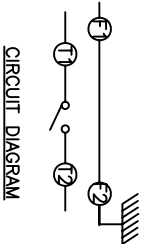
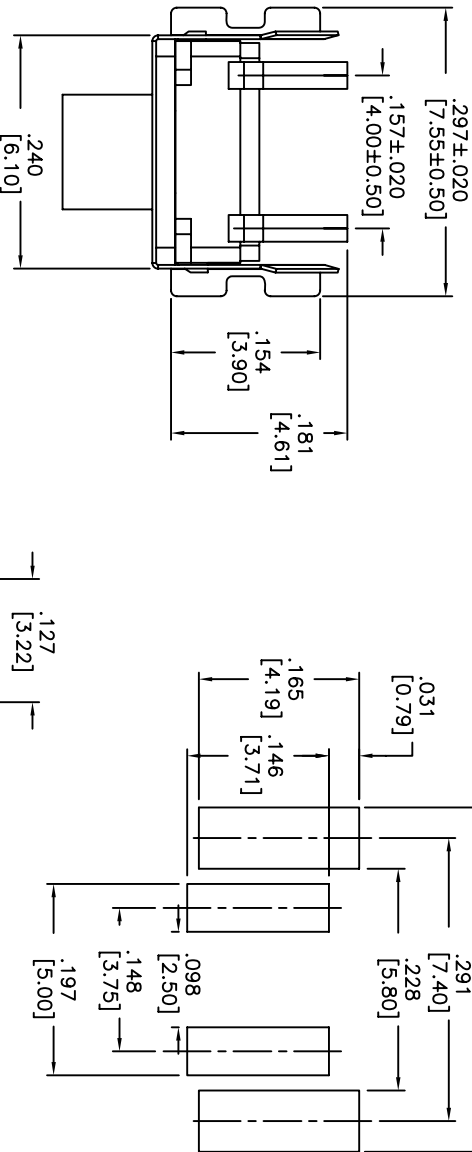


THIS DOCUMENT IS THE PROPERTY OF APDM COMPONENTS AND SHALL NOT BE COPIED, REPRODUCED, DISCLOSED OR USED AS THE BASIS FOR MANUFACTURING OR SALE WITHOUT PERMISSION OF A DULY AUTHORIZED REPRESENTATIVE OF APDM COMPONENTS INC.

P.C.B. LAYOUT
UNLESS OTHERWISE SPECIFIED
P.C. TOLERANCES ARE $\pm .004$ [0.10]



PRODUCT SERIES: ATA6***V*
PACKAGE STYLE: T/R=TAPE AND REEL
S=WITH SUPPORT TERMINAL
C=WITHOUT SUPPORT TERMINAL
DIM "L" STEM HEIGHT:
00=0
08=.031 [0.80]
10=.039 [1.00]
23=.093 [2.35]
33=.130 [3.30]
OPERATION FORCE:
N=BROWN, 180gf
R=RED, 260gf
SOLDERING:
V=LEAD FREE

DATE	SYM	REVISION RECORD	DWN.	CK.
4/07	B	ECO# 658	CD	PD
12/07	C	ECO# 734	CD	PD

DESCRIPTION: RIGHT ANGLE MECHANICAL CONTACT SWITCH.
SPECIFICATIONS:
STROKE: .018±.008 [0.45±0.2]
OPERATION TEMPERATURE RANGE: -25°C TO +70°C
STORAGE TEMPERATURE RANGE: -30°C TO +80°C
VIBRATION TEST: PASSES METHOD 201A
MIL-STD-202F:
SHOCK TEST: 50G PER METHOD 213B MIL-STD202F.
ELECTRICAL LIFE: 500,000 CYCLES.
RATING: 50mA, 12VDC.
CONTACT RESISTANCE: 100mΩ MAX.
INSULATION RESISTANCE: 100MΩ MIN. 500VDC.
DIELECTRIC STRENGTH: 250VAC/1 MINUTE.
CONTACT ARRANGEMENT: 1 POLE 1 THROW.
MATERIALS:
COVER: NICKEL SILVER.
STEM: SILICONE RUBBER.
TERMINAL: BRASS WITH SILVER PLATING.
BASE: UL94V-0 HIGH-TEMP. THERMOPLASTIC.
COLOR: BLACK.
CONTACT: PHOSPHOR BRONZE WITH SILVER CLADDING.
SOLDERING:
HAND: 30 WATT IRON AT 350° FOR 5 SECONDS.
IR REFLOW & VAPOR PHASE: 255°C MAX.
ROHS COMPLANT.
LEAD FREE PROCESS COMPATIBLE.

Q.A. INSPECT:	DESIGNER'S INITIAL:	DATE:	DRAWING NO.:	REV.:
APDM	63 NICK RD. Haverhill, MA 01830 Phone 978-372-3534	8/8/05	ATA(S)6***V*	C
TOLERANCES (UNLESS OTHERWISE SPECIFIED):	TITLE	SHEET	SIZE	SCALE
.XX±.XX(0.05) .XXX±.XXX(0.20) .XXXX±.XXXX(0.02)	RIGHT ANGLE TACT SWITCH	1 OF 1	B	8:1
ANGLE = 40.5°				THIRD ANGLE PROJECTION

Mouser Electronics

Authorized Distributor

Click to View Pricing, Inventory, Delivery & Lifecycle Information:

[Apem:](#)

[ATAS-623RTR](#)