

# D Ribbon

## Plastic Junction Shell

3485 Series



156

### IMPORTANT NOTICE TO PURCHASER

ALL STATEMENTS, TECHNICAL INFORMATION AND RECOMMENDATIONS CONTAINED HEREIN ARE BASED ON TESTS WE BELIEVE TO BE RELIABLE, BUT THE ACCURACY OR COMPLETENESS THEREOF IS NOT GUARANTEED, AND THE FOLLOWING IS MADE IN LIEU OF ALL WARRANTIES, EXPRESSED OR IMPLIED:

SELLER'S AND MANUFACTURER'S ONLY OBLIGATION SHALL BE TO REPLACE SUCH QUANTITY OF THE PRODUCT PROVED TO BE DEFECTIVE. NEITHER SELLER NOR MANUFACTURER SHALL BE LIABLE FOR ANY INJURY, LOSS OR DAMAGE, DIRECT OR CONSEQUENTIAL, ARISING OUT OF THE USE OF OR THE INABILITY TO USE THE PRODUCT. BEFORE USING, USER SHALL DETERMINE THE SUITABILITY OF THE PRODUCT FOR HIS INTENDED USE, AND USER ASSUMES ALL RISK AND LIABILITY WHATSOEVER IN CONNECTION THEREWITH. NO STATEMENT OR RECOMMENDATION NOT CONTAINED HEREIN SHALL HAVE ANY FORCE OR EFFECT UNLESS IN AN AGREEMENT SIGNED BY OFFICERS OR SELLER AND MANUFACTURER.

Date Issued: March 8, 1995

TS-0028-08  
Sheet 1 of 2

## Physical

### Shell

Material: Glass Filled Polyester (PBT)

Flammability: UL 94V-0

**Hardware Included:** Screw 6-32  $\times$  7/8 Pan Hd., Zinc Plated Steel (2)  
Hex Nut 6-32 Zinc Plated Steel (2)

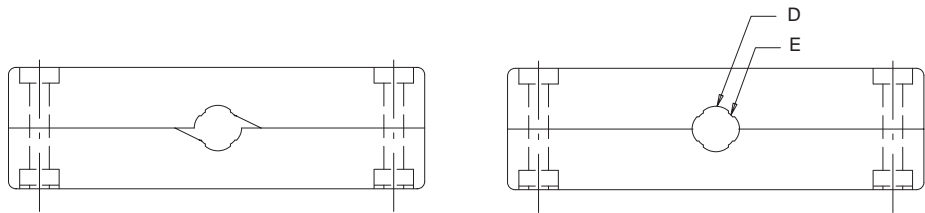
### 3M Electronic Products Division

6801 River Place Blvd.  
Austin, TX 78726-9000

For technical, sales or ordering information call  
**800-225-5373**

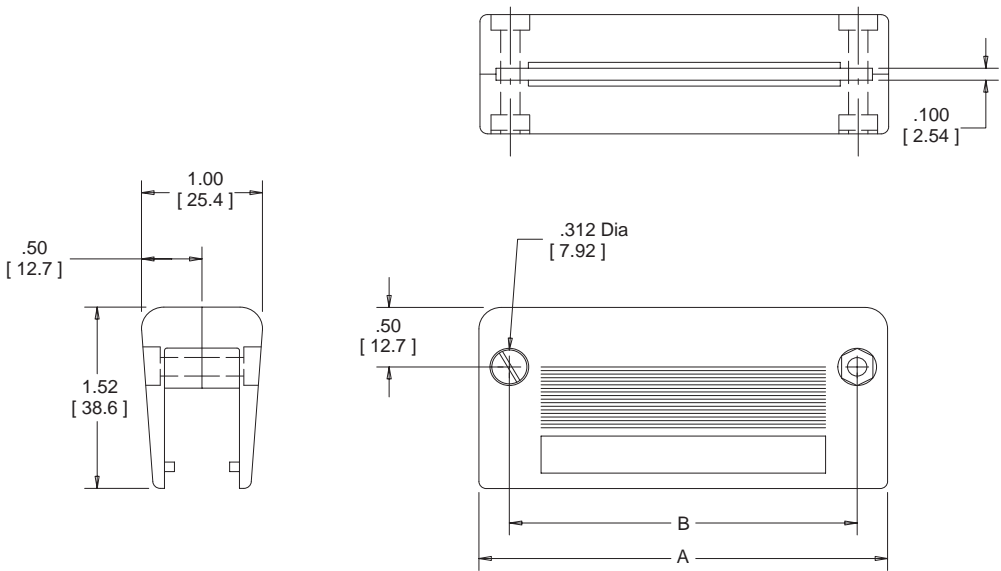
Contact Quantity	Dimensions			
	A	B	D Dia	E Dia
14	1.76 [ 44.7 ]	1.27 [ 32.3 ]	.30 [ 7.6 ]	.21 [ 6.9 ]
24	2.19 [ 55.6 ]	1.70 [ 43.2 ]	.32 [ 8.1 ]	.29 [ 7.4 ]
36	2.70 [ 68.6 ]	2.21 [ 56.1 ]	.34 [ 8.6 ]	.31 [ 7.9 ]
50	3.29 [ 83.6 ]	2.80 [ 71.1 ]	.36 [ 9.1 ]	.33 [ 8.4 ]

3485-XXXXR ( Round Cable )



3485-1700R ( Only )

3485-XXXXF ( Flat Cable )



- Notes:
1. Only the plastic 3M D Ribbon Connectors can be used with this junction shell.
  2. With or without strain relief on connector.

Inch [mm]			
Tolerance Unless Noted			
	.0	.00	.000
Inch	± .1	± .01	± .005

[ ] Dimensions for  
Reference only

## Ordering Information

### 3485-XX00X

Connector Quantity:  
18 = 14 Position  
17 = 24 Position  
28 = 36 Position  
25 = 50 Position

Cable Type:  
F = Flat Cable  
R = Round Cable

TS-0028-08  
Sheet 2 of 2