

Distributed by:

JAMECO[®]
ELECTRONICS

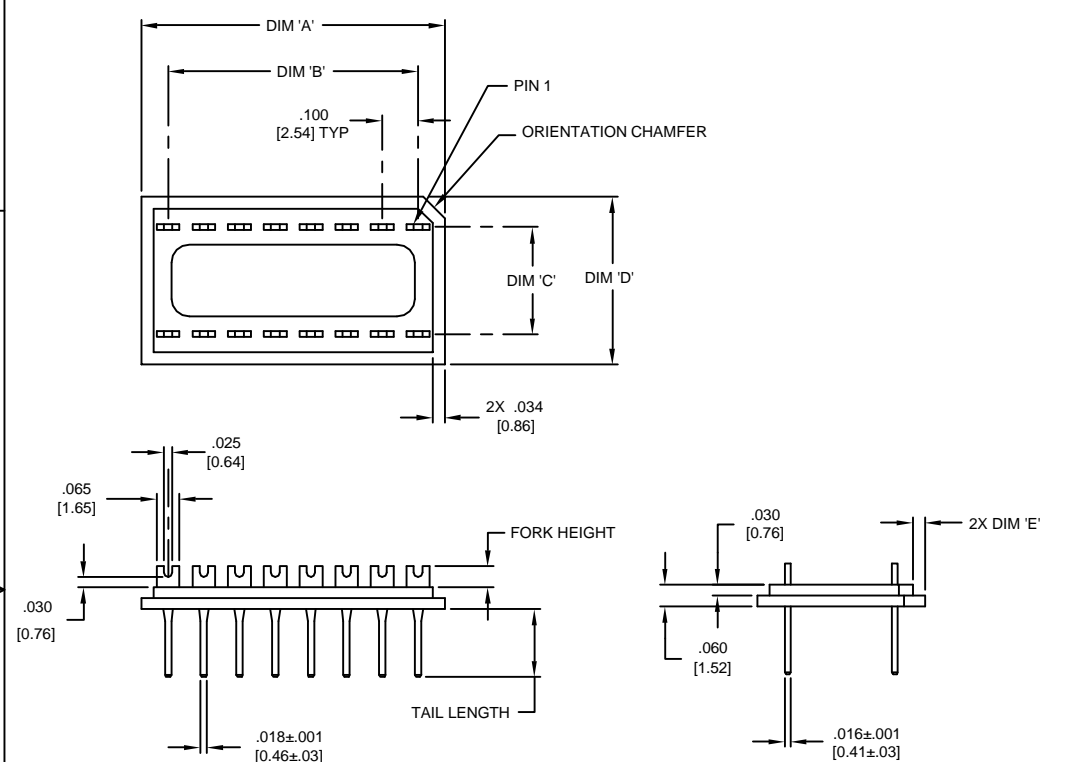
www.Jameco.com ♦ 1-800-831-4242

The content and copyrights of the attached
material are the property of its owner.

Jameco Part Number 104337

PART NO.	CA-XXP-XXX-XX
----------	---------------

REVISIONS					
LTR	DESCRIPTION		DATE	APPROVED	
A	INITIAL RELEASE	SEE DO 4547	C.P.	7-5-01	A.J
B	SEE DO 4616		C.P.	9-10-01	A.J
C	SEE DO 4630		C.P.	9-25-01	A.J
D	SEE DO 5580		C.P.	8-26-04	A.J
E	SEE DO 6130		C.P.	6-27-06	A.J
F	SEE DO 6279		C.P.	11-17-06	A.J



CA-XXP-XXX-XX

NO. OF POS. _____

PLUG STANDARD, FORK _____

PLATING _____

BLANK = TAIL AREA : .000010 [.00025] GOLD
FORK AREA : .000150 ±.000025 [.00381±.00064] TIN
UNDERPLATE : .000075 [.00190] NICKEL

T = .000150 ±.000025 [.00381±.00064] TIN
OVER .000075 [.00190] NICKEL

CONTACT STYLE _____

TAIL LENGTH	FORK HEIGHT
02 = .190 [4.83]	.060 [1.52]
04 = .150 [3.81]	.060 [1.52]
11 = .190 [4.83]	.100 [2.54]
12 = .150 [3.81]	.100 [2.54]

CONFIGURATION (Add if required) _____

BLANK = STANDARD WIDTH
NW = NARROW WIDTH

TABULATION :


NO. OF POS	DIM 'A'		DIM 'B'		DIM 'C'		DIM 'D'		DIM 'E'	
	IN	MM	IN	MM	IN	MM	IN	MM	IN	MM
08	.450	[11.43]	.300	[7.62]	.300	[7.62]	.470	[11.94]	.034	[0.86]
14	.750	[19.05]	.600	[15.24]	.300	[7.62]	.470	[11.94]	.034	[0.86]
14-NW	.750	[19.05]	.600	[15.24]	.300	[7.62]	.395	[10.03]	.024	[0.61]
16	.850	[21.59]	.700	[17.78]	.300	[7.62]	.470	[11.94]	.034	[0.86]
16-NW	.850	[21.59]	.700	[17.78]	.300	[7.62]	.395	[10.03]	.024	[0.61]
18	.950	[24.13]	.800	[20.32]	.300	[7.62]	.470	[11.94]	.034	[0.86]
20	1.050	[26.67]	.900	[22.86]	.300	[7.62]	.470	[11.94]	.034	[0.86]
24	1.250	[31.75]	1.100	[27.94]	.600	[15.24]	.795	[20.19]	.034	[0.86]
28	1.450	[36.83]	1.300	[33.02]	.600	[15.24]	.795	[20.19]	.034	[0.86]
40	2.050	[52.07]	1.900	[48.26]	.600	[15.24]	.795	[20.19]	.034	[0.86]

SPECIFICATIONS :

<u>ENVIRONMENTAL :</u>	
TEMPERATURE RANGE :	-65°C TO +125°C
<u>MECHANICAL :</u>	
INSULATOR MATERIAL :	GLASS FILLED NYLON, BLACK, UL94V-0
CONTACT MATERIAL :	BRASS, CDA 260
<u>ELECTRICAL :</u>	
CURRENT RATING :	1 AMP
VOLTAGE RATING :	300 Vrms
DIELECTRIC WITHSTANDING VOLTAGE :	500 Vrms MIN.
INSULATION RESISTANCE :	> 5000 Megohms

1. MEETS THE REQUIREMENTS OF DIRECTIVE 2002/95/EC OF THE EUROPEAN PARLIAMENT AND OF THE COUNCIL OF 27 JANUARY 2003 ON THE RESTRICTION OF THE USE OF CERTAIN HAZARDOUS SUBSTANCES IN ELECTRICAL AND ELECTRONIC EQUIPMENT. (ROHS)

NOTES : UNLESS OTHERWISE SPECIFIED

DIMENSIONS ARE IN INCHES TOLERANCES ARE:		APPROVALS		DATE		 CIRCUIT ASSEMBLY CORP. 18 THOMAS ST., IRVINE, CALIFORNIA 92618-2777			
DRAWN		CUONG P		6/29/01		DIP PLUG STANDARD, FORK STYLE SERIES 'P' "ROHS COMPLIANT"			
DECIMALS	ANGLES	CHECKED		7/05/01					
.XX ± .010	± 3°	A.JOCHEN							
DIMENSIONS IN BRACKETS [] ARE IN MILLIMETERS TOLERANCES ARE:						THE INFORMATION AND DESIGN DISCLOSED HEREIN WAS ORIGINATED BY AND IS THE PROPERTY OF CIRCUIT ASSEMBLY CORPORATION. CIRCUIT ASSEMBLY CORPORATION RESERVES ALL PATENT, PROPRIETARY, DESIGN, MANUFACTURING INFORMATION, USE AND SALES RIGHTS THERETO, AND TO ANY ARTICLE DISCLOSED HEREIN EXCEPT TO THE EXTENT RIGHTS ARE EXPRESSLY GRANTED TO OTHERS. THE FORGOING DOES NOT APPLY TO VECTOR PROPRIETARY RIGHTS.			
DECIMALS	ANGLES					SIZE	CODE IDENT NO.	DRAWING NO.	REV.
.XX ± .05	± 3°					C	52072	620394	F
DO NOT SCALE DRAWING						SCALE: 4 : 1		SHEET 1 OF 1	