

# DC to AC Inverters

Conformity to RoHS Directive

## Connector type, Dimming, 4W, for 1 Bulb

### CXA Series CXA-L0605-VSL

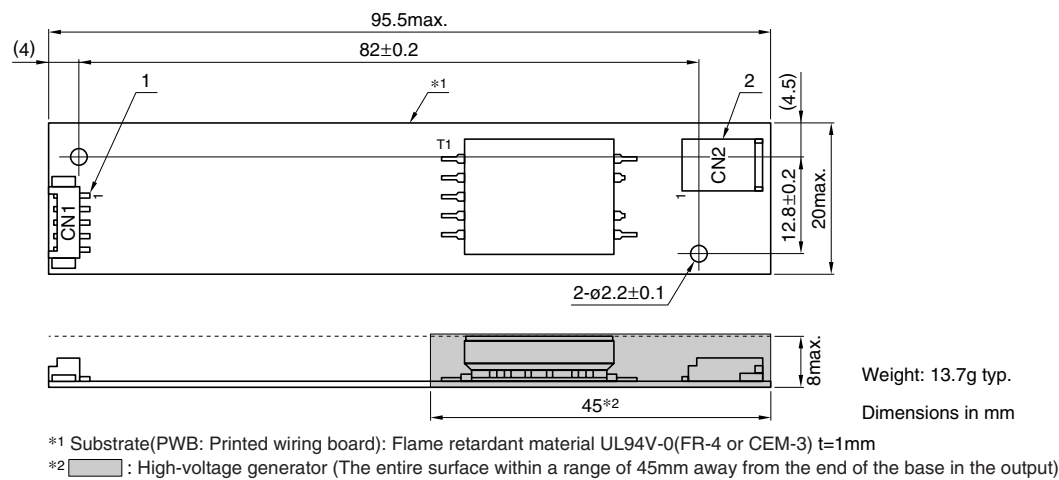
#### FEATURES

- For 1 bulb.
- Applicable panel size\* : 5 to 15-inch
- With brightness control function (Pulse Wide Modulation mode).
- The high-voltage terminals and patterns are coated with silicone so as to avoid the defects caused by dust.
- It is a product conforming to RoHS directive.
- \* The applicable panel size is for typical reference dimensions.

#### TEMPERATURE AND HUMIDITY RANGES

Temperature range (°C)	Operating	0 to +60
	Storage	−20 to +85
Humidity range(%)RH		95max.
		[Maximum wet-bulb temperature 38°C. No dew.]

#### SHAPES AND DIMENSIONS



		Connector manufacturer's company and type		Symbol
1	Input connector	Molex Japan Co., Ltd.	53261-0571	CN1
2	Output connector	Japan Solderless Terminal Co., Ltd.	SM02B-BHSS-1	CN2

#### TERMINAL NUMBERS AND FUNCTIONS

##### CN1

Terminal No.	Function	Symbol
CN1-1	Input voltage Edc: 4.75 to 5.25V/5V	Vin
CN1-2	0V	GND
CN1-3	Remote voltage Edc 0V: off/5 to 5.25V:on	Vrmt
CN1-4	Brightness dimmer voltage * Edc: 0 to 3V (Maximum brightness on 0V)	Vbr
CN1-5	Used in the internal circuits, do not connect.	N.C.

\* Brightness can be controlled by adjusting Vbr within a range of 0 to 3V.

##### CN2

Terminal No.	Function		Symbol
CN2-1	Output [High voltage] Irms	3 to 6mA	VHIGH
CN2-2	—	—	N.C.
CN2-3	Output [Low voltage]	(2V)	VLOW

• Conformity to RoHS Directive: This means that, in conformity with EU Directive 2002/95/EC, lead, cadmium, mercury, hexavalent chromium, and specific bromine-based flame retardants, PBB and PBDE, have not been used, except for exempted applications.

• All specifications are subject to change without notice.

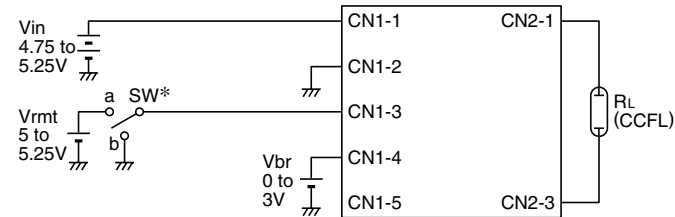
## CXA-L0605-VSL

### ELECTRICAL CHARACTERISTICS

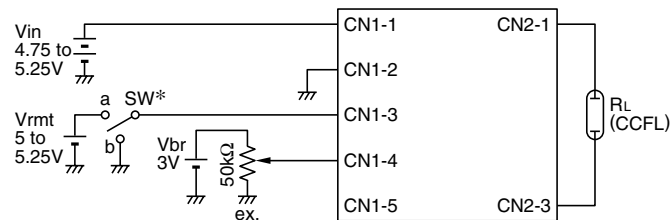
Item	Unit	Symbol	Specification			Condition		Ta(°C)	RL(kΩ)	Brightness
			min.	typ.	max.	Vin(V)	Vbr(V)			
Output current Irms	mA	Iout	5.3	6	6.7	5±0.25	0	0 to +60	70 to 90	Maximum
			5.4	6	6.6	5±0.25	0	23±5	80	Maximum
			2.5	3	3.5	5±0.25	3	0 to +60	226	Minimum
Input current Idc	A	Iin	—	0.7	0.8	5±0.25	0	0 to +60	70 to 90	
Oscillation frequency	kHz	FL	35	45	55	5±0.25	0	0 to +60	70 to 90	
Open circuit output voltage Erms	kV	Vopen	1.5	1.7	—	5±0.25	0	0 to +60	∞	

### TYPICAL CONNECTIONS

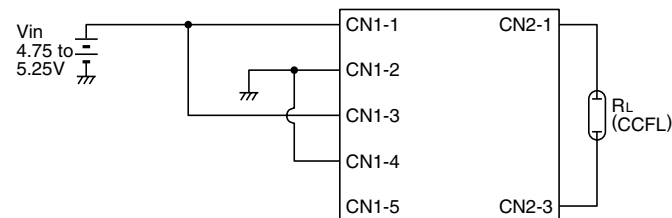
#### EXAMPLE OF VOLTAGE DIMMER CONTROL



#### EXAMPLE OF POTENTIOMETER DIMMER CONTROL



#### NO DIMMER CONTROL(BRIGHTNESS MAX.)



\* SW a:on, b:off

