



■ Features :

- Universal AC input/Full range
- Protections: Short circuit / Overload / Over voltage / Battery polarity protections (by fuse)
- Built-in temperature compensation function
- Output voltage detection signal
- Cooling by free air convection
- LED indicator for power on
- No load power consumption <0.75W

ADD:installation

- Suitable for installation in metallic or non-metallic system enclosure

- 100% full load burn-in test

- 2 years warranty

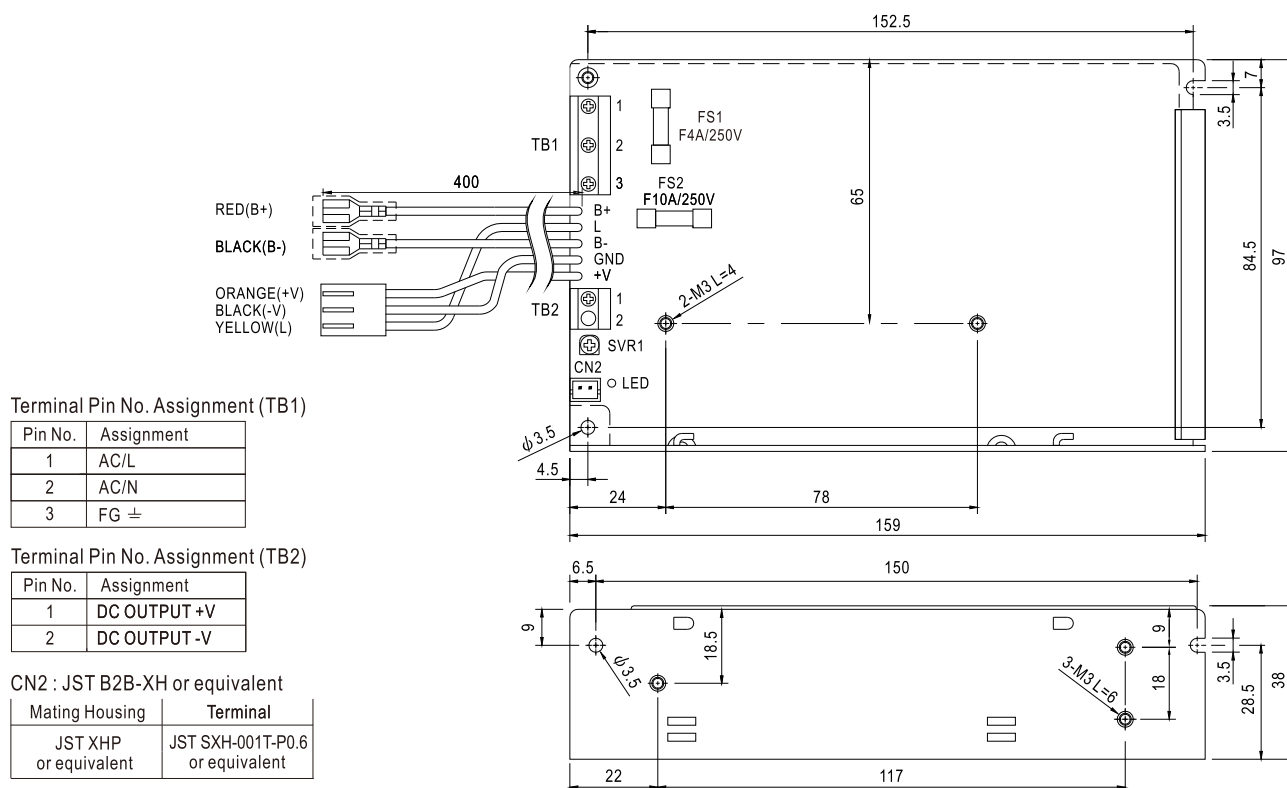


SPECIFICATION

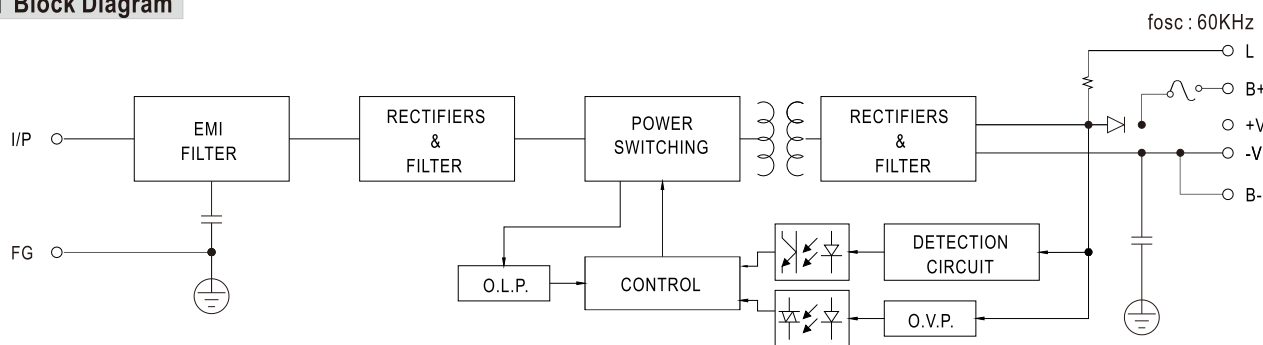
MODEL		SCP-75-12		SCP-75-24		
OUTPUT	DC VOLTAGE	13.8V		27.6V		
	RATED CURRENT	5.4A		2.7A		
	CURRENT RANGE	0 ~ 5.4A		0 ~ 2.7A		
	PEAK 5S	Note.6	6.5A	3.2A		
	RATED POWER	74.5W		74.5W		
	RIPPLE & NOISE (max.)	Note.2	120mVp-p	200mVp-p		
	VOLTAGE ADJ. RANGE	+15,-5%		+15,-5%		
	VOLTAGE TOLERANCE	Note.3	± 2.0%	± 1.0%		
	LINE REGULATION	Note.4	± 1.0%	± 1.0%		
	LOAD REGULATION	Note.5	± 2.0%	± 1.0%		
	SETUP, RISE TIME	500ms, 30ms/230VAC 1200ms, 30ms/115VAC at full load				
	HOLD UP TIME (Typ.)	50ms/230VAC 16ms/115VAC at full load				
INPUT	VOLTAGE RANGE	85 ~ 264VAC 120 ~ 370VDC				
	FREQUENCY RANGE	47 ~ 63Hz				
	EFFICIENCY (Typ.)	80%		84%		
	AC CURRENT (Typ.)	1.5A/115VAC 0.9A/230VAC				
	INRUSH CURRENT (Typ.)	COLD START 45A				
	LEAKAGE CURRENT	<2mA / 240VAC				
FUNCTION	TEMP. COMPENSATION	By NTC (not provide with the power supply)				
	OUTPUT VOLTAGE SENSOR	L=output voltage +0.2 ~ 0.7V(AC OK); L=0V(AC Fail)				
PROTECTION	OVERLOAD	6.5 ~ 8.7A rated output power		3.2 ~ 4.3A rated output power		
	OVER VOLTAGE	Protection type : Hiccup mode, recovers automatically after fault condition is removed				
		16.6 ~ 19.3V		33.1 ~ 38.6V		
ENVIRONMENT		Protection type : Shut down o/p voltage, re-power on to recover				
		WORKING TEMP.	-20 ~ +60°C (Refer to output load derating curve)			
		WORKING HUMIDITY	20 ~ 90% RH non-condensing			
		STORAGE TEMP., HUMIDITY	-40 ~ +85°C, 10 ~ 95% RH			
		TEMP. COEFFICIENT	± 0.05% /°C (0 ~ 45°C)			
SAFETY & EMC (Note 6)		VIBRATION 10 ~ 500Hz, 2G 10min./1cycle, period for 60min. each along X, Y, Z axes				
		SAFETY STANDARDS	UL60950-1, CB(IEC60950-1),CCC GB4943 approved			
		WITHSTAND VOLTAGE	I/P-O/P:3KVAC I/P-FG:2.0KVAC O/P-FG:0.5KVAC			
		ISOLATION RESISTANCE	I/P-O/P, I/P-FG, O/P-FG:100M Ohms / 500VDC / 25°C/ 70% RH			
		EMC EMISSION	Compliance to EN55022 (CISPR22) Class B, EN61000-3-2,3			
OTHERS		EMC IMMUNITY Compliance to EN61000-4-2, 3, 4, 5, 6, 8, 11, ENV50204, EN55024, EN61000-6-1, light industry level, criteria A				
		MTBF	461.2K hrs min. MIL-HDBK-217F (25°C)			
		DIMENSION	159*97*38mm (L*W*H)			
NOTE		PACKING 0.5Kg; 30pcs/16Kg/1CUFT				
		1. All parameters NOT specially mentioned are measured at 230VAC input, rated load and 25°C of ambient temperature. 2. Ripple & noise are measured at 20MHz of bandwidth by using a 12" twisted pair-wire terminated with a 0.1uf & 47uf parallel capacitor. 3. Tolerance : includes set up tolerance, line regulation and load regulation. 4. Line regulation is measured from low line to high line at rated load. 5. Load regulation is measured from 0% to 100% rated load. 6. 33% Duty cycle maximum within every 15 seconds. Average output power should not exceed the rated power. 7. The power supply is considered a component which will be installed into a final equipment. The final equipment must be re-confirmed that it still meets EMC directives. (As available on http://www.meanwell.com)				

Mechanical Specification

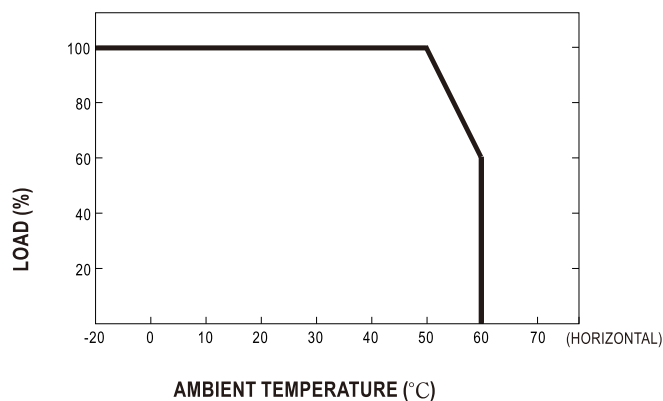
Case No. 901 Unit:mm



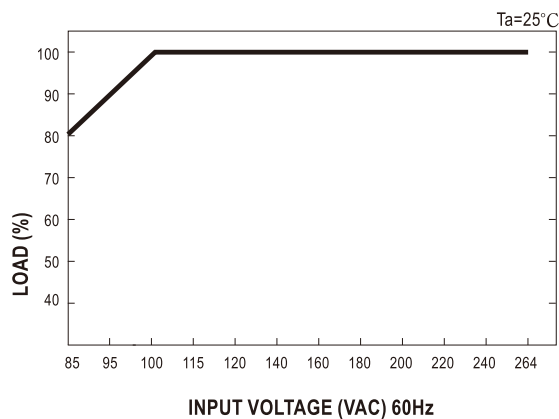
Block Diagram



Derating Curve



Output Derating VS Input Voltage



Function Description

1.B+,B-

Connect the battery : B+ connected to battery positive.
B- connected to battery negative.

2.L

Output voltage detection, detect output voltage or battery voltage (if battery is used).

	Voltage of L Pin
AC OK	Output voltage +0.2~0.7V(depends on Vf of diode)
AC Fail	0V

3.+V,-V

Output voltage. Can't connect the battery.

4.CN2

Temperature sensor can be connected to the unit to allow temperature compensation of the charging voltage.

If the sensor is not used, the charger still works normally.

Reference example: (Under rated DC output voltage)

Connect 100K Ω Thermistor(THINKING) on NTC. The output voltage will change along

with the temperature change. If the output voltage is adjusted other than the rated value by internal potential meter, please consult Meanwell for suitable value of Thermistor.

	Ta :0°C	Ta :25°C	Ta :50°C
SCP-75-12	14.4 \pm 0.2V	13.8 \pm 0.1V	13.2 \pm 0.2V
SCP-75-24	29.3 \pm 0.4V	27.6 \pm 0.2V	26.4 \pm 0.4V

