

**MICRO SWITCH**FREEPORT, ILLINOIS, U.S.A.  
A DIVISION OF HONEYWELL

FED. MFG. CODE 91929

**SWITCH-BASIC**

CATALOG LISTING

**BZ-RW925****ANG3500**

X115524-BZ

REPLACES

RELEASE NO. ECO-0006029

CHECK

CHECK

15JUN04

AK

CHECK

L E B 3 OCT 63

**M BZ-RW925**DRAWING  
NUMBER

7

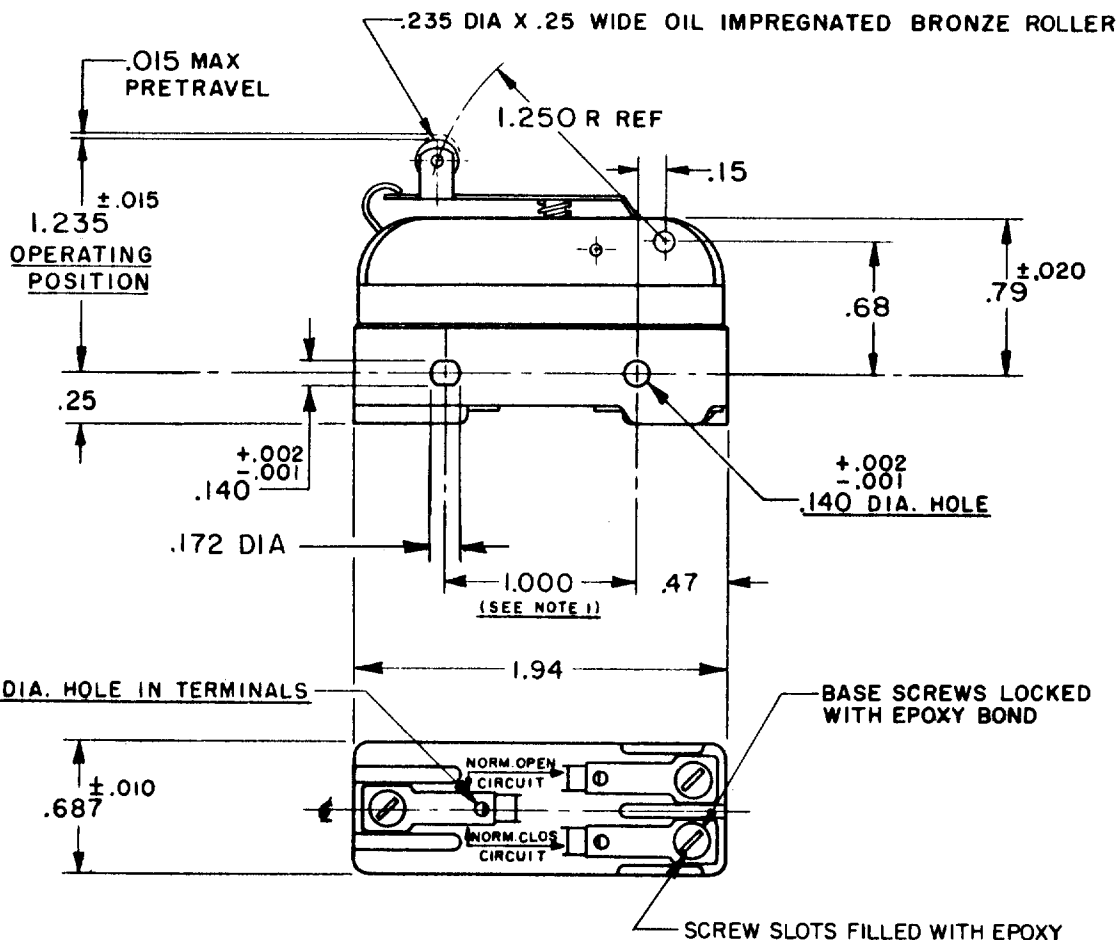
ISSUE

## REVISIONS

F 0006029

KSR  
JUN 04

FO-50378

**NOTE -**1-MOUNTING HOLES WILL ACCEPT PINS OR SCREWSOF .139 MAX. DIA. ON 1.000 ±.002 CENTERS.2-PLASTIC PARTS ARE MADE OF MINERAL FILLED PHENOLICS.

THIS DRAWING COVERS A PROPRIETARY ITEM AND IS THE PROPERTY OF MICRO SWITCH, A DIVISION OF MINNEAPOLIS-HONEYWELL REGULATOR CO. THIS DRAWING IS NOT TO BE COPIED OR USED WITHOUT THE APPROVAL OF MICRO SWITCH.

**CHARACTERISTICS**

OPERATING FORCE-----12 OZ MAX

RELEASE FORCE-----4 OZ MIN

DIFFERENTIAL TRAVEL-----.0005 .0010

OVERTRAVEL-----.100 MIN

**ELECTRICAL DATA**CONTACT ARRANGEMENT  
S P D T**-L95-** 10A-125, 250 OR 480 VAC  
1/8HP-125 VAC; 1/4HP-250 VAC**SCALE FULL**

DO NOT SCALE PRINT

UNLESS OTHERWISE  
NOTED

DIMENSIONS ARE IN INCHES

**TOLERANCES ARE:**

ONE PLACE	(.0)	±.030
TWO PLACE	(.00)	±.015
THREE PLACE	(.000)	±.005
ANGLES		±

WEIGHT

# Mouser Electronics

Authorized Distributor

Click to View Pricing, Inventory, Delivery & Lifecycle Information:

[Honeywell:](#)

[BZ-RW925](#)