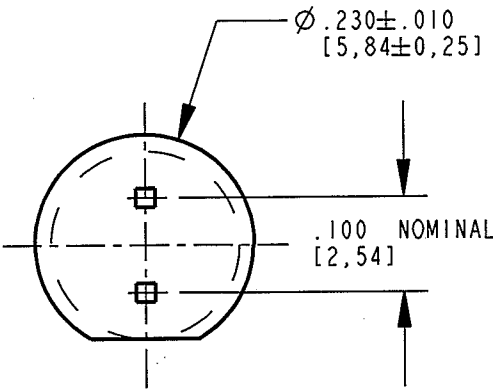
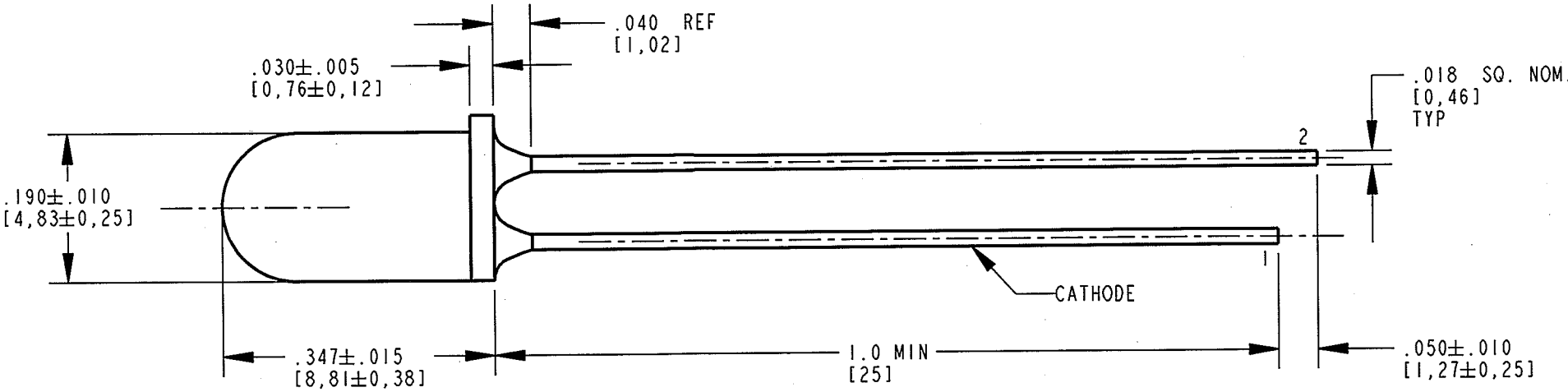


| DIALIGHT PART NUMBER | LED & LENS COLOR |
|-------------------------|---------------------|
| 521-9247F | RED |
| 521-9251F | GREEN |

RoHS COMPLIANT 521-92XXF

Part Numbers with the "F" suffix ending are RoHS Compliant.
For Example: 521-9251F
Packaging is marked with "RoHS Compliant" label or equivalent markings. Parts can be wave soldered, dip soldered or hand soldered using typical lead-free soldering process with max 260°C temp. for 5 sec.

| REV | ECN NO | REVISIONS | DRN | CKD | APP | DATE |
|-----|--------|--|-----|------|-----|----------|
| A | | NEW RELEASE | KLJ | N.O. | MES | 10-31-08 |
| B | | "TINTED" EPOXY PACKAGE WAS "WATER CLEAR" IN ERROR. | KLJ | n.d. | WJ | 11/15/09 |



| OPERATING CHARACTERISTICS AT 25°C AMBIENT | | | | | | |
|---|--|-----|---|-----|----------------------------|---------------------------|
| LED COLOR | LUMINOUS INTENSITY @I _F = 10 mA (mcd) | | FORWARD VOLTAGE @I _F = 10 mA (V) | | PEAK WAVELENGTH (nm) | VIEWING ANGLE (DEG) |
| | MIN | TYP | MIN | MAX | TYP | TYP |
| RED | 25 | 60 | 2.2 | 3.0 | 635 | 35 |
| GREEN | 25 | 70 | 2.3 | 3.0 | 565 | 24 |



ATTENTION:
OBSERVE PRECAUTIONS FOR
HANDLING ELECTROSTATIC
SENSITIVE DEVICES

| ABSOLUTE MAXIMUM RATINGS AT 25°C AMBIENT | RED | GREEN | UNITS |
|---|-------------|-------------|-------|
| POWER DISSIPATION | 135 | 135 | mW |
| DC CURRENT | 30 | 30 | mA |
| PEAK OPERATING FORWARD CURRENT | 90 | 90 | mA |
| PEAK TRANSIENT FORWARD CURRENT (10μs PULSE WIDTH) | 500 | 500 | mA |
| DERATE LINEARLY FROM 25°C (50°C FOR YELLOW) | 0.4 | 0.4 | mA/°C |
| REVERSE VOLTAGE (I _R =100 μA) | 5 | 5 | V |
| STORAGE TEMPERATURE | -55 TO +100 | | °C |
| OPERATING TEMPERATURE | -55 TO +100 | -20 TO +100 | °C |
| SOLDERING TEMPERATURE, 1/16" FROM BODY FOR 5 SEC | 260 | | °C |

NOTES:

1. LENS COLOR: TINTED, NON-DIFFUSED
2. LEAD SPACING MEASURED NEAR EPOXY PACKAGE.
3. PIN NUMBERS FOR REFERENCE ONLY, DESIGNATION NON-EXISTENT ON PART.
4. DIALIGHT PART NUMBER: 521-9247F, 521-9251F.
5. THIS ASSEMBLY CONTAINS ELECTROSTATIC DISCHARGE SENSITIVE DEVICES (ESDS). MAINTAIN ALL PRECAUTIONARY MEASURES DURING ASSEMBLY, HANDLING, AND STORAGE IN ACCORDANCE WITH IPC-A-610.

| | | |
|---|---|-----|
| THIS DRAWING AND THE CONTENTS HEREIN ARE CONFIDENTIAL AND THE SOLE PROPERTY OF DIALIGHT. REPRODUCTION OF THIS DRAWING OR CONSTRUCTION OF ANY PARTS WITHIN THIS DRAWING ARE FORBIDDEN WITHOUT THE WRITTEN CONSENT OF DIALIGHT. | | |
| SCALE: 3.000 | DRAWING NUMBER | REV |
| ALL DIM'S IN: INCHES (MM) | C-17674 | B |
| TOLERANCES: UNLESS OTHERWISE SPECIFIED | TITLE Ø5mm TINTED, NON-DIFFUSED LED RoHS COMPLIANT | |
| FRACTIONS: ±1/64 DECIMALS (.XX): ±.01 DECIMALS (.XXX): ±.005 DECIMALS (.XXXX): ±.0005 ANGLES: ±1° | MATERIAL | |
| FINISH: | Dialight 1501 ROUTE 34 SOUTH FARMINGDALE, NJ 07727 | |
| FSCM 83330 | SHEET 1 OF 1 FAMILY TABLE: | |