

HP4-44-D4A/B



1.2 m | 4 ft High Performance Parabolic Shielded Antenna, single-polarized, 4.400–5.000 GHz, PDR48, gray antenna, enhanced white radome without flash, standard pack—one-piece reflector

Product Classification

Product Type

Microwave antenna

General Specifications

Antenna Type

HP - High Performance Parabolic Shielded Antenna, single-polarized

Diameter, nominal

1.2 m | 4 ft

Packing

Standard pack

Radome Color

White

Radome Material

Enhanced

Reflector Construction

One-piece reflector

Antenna Input

PDR48

Antenna Color

Gray

Antenna Type

HP - High Performance Parabolic Shielded Antenna, single-polarized

Diameter, nominal

1.2 m | 4 ft

Flash Included

No

Polarization

Single

Electrical Specifications

Operating Frequency Band

4.400 – 5.000 GHz

Beamwidth, Horizontal

3.8 °

Beamwidth, Vertical

3.8 °

Boresite Cross Polarization Discrimination (XPD)

30 dB

Electrical Compliance

ETSI Class 2

Front-to-Back Ratio

56 dB

Gain, Low Band

30.0 dBi

Gain, Mid Band

32.6 dBi

Gain, Top Band

33.1 dBi

Operating Frequency Band

4.400 – 5.000 GHz

Radiation Pattern Envelope Reference (RPE)

2523A

Return Loss

26.4 dB

VSWR	1.10
------	------

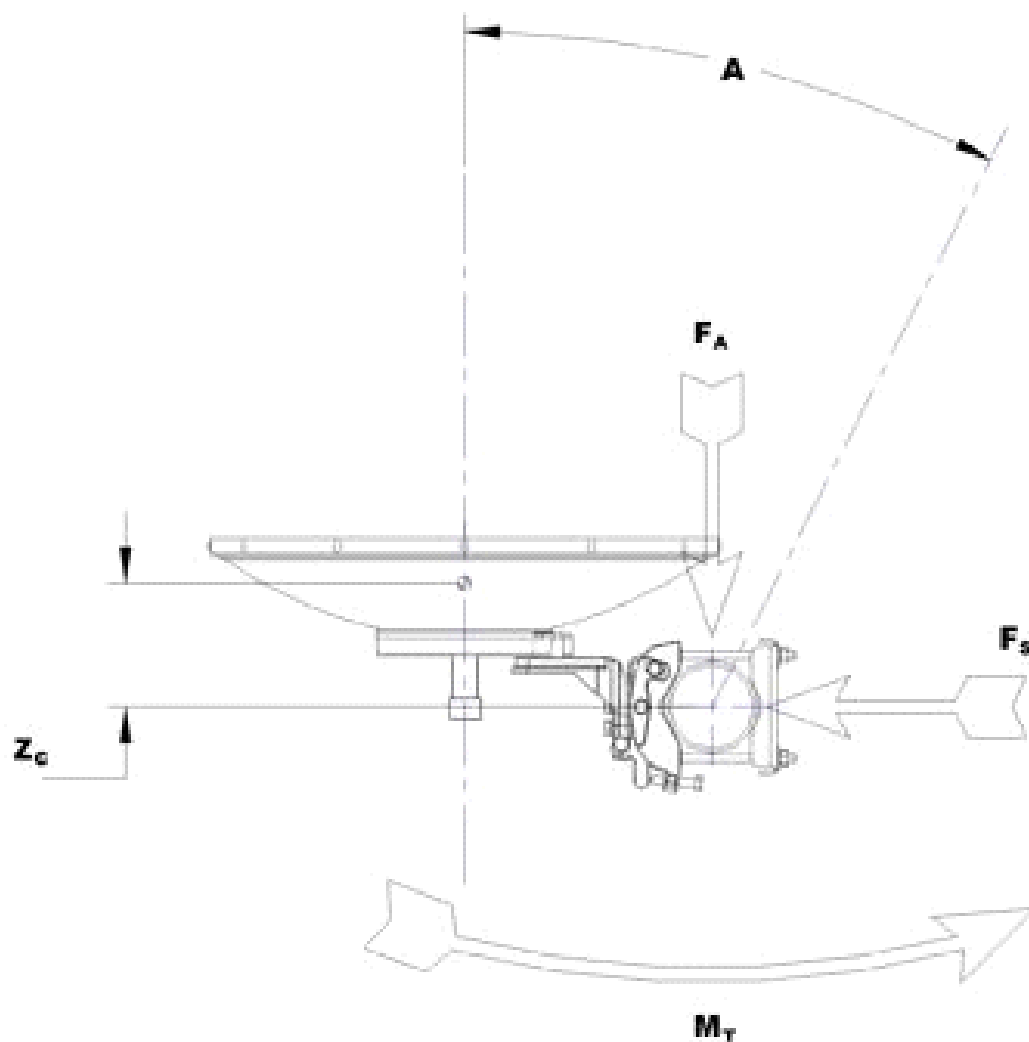
Mechanical Specifications

Fine Azimuth Adjustment	±15°
Fine Elevation Adjustment	±20°
Mounting Pipe Diameter	115 mm 4.5 in
Net Weight	69 kg 152 lb
Side Struts, Included	1 inboard
Side Struts, Optional	1 inboard
Wind Velocity Operational	110 km/h 68 mph
Wind Velocity Survival Rating	200 km/h 125 mph

Wind Forces At Wind Velocity Survival Rating

Angle α for MT Max	-130 °
Axial Force (FA)	3158 N 710 lbf
Side Force (FS)	1546 N 348 lbf
Twisting Moment (MT)	1072 N-m 791 ft lb
Weight with 1/2 in (12 mm) Radial Ice	356 kg 784 lb
Zcg with 1/2 in (12 mm) Radial Ice	524 mm 21 in
Zcg without Ice	335 mm 13 in

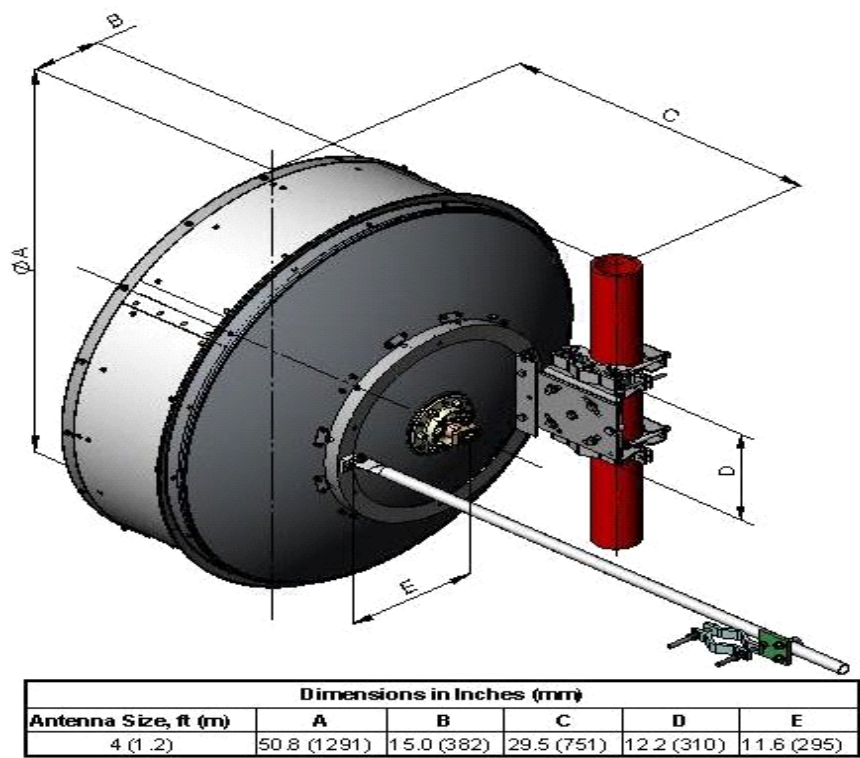
Wind Forces At Wind Velocity Survival Rating Image



Packed Dimensions

Gross Weight, Packed Antenna	168.0 kg 370.4 lb
Height	840.0 mm 33.1 in
Length	1430.0 mm 56.3 in
Volume	1.7 m ³
Width	1430.0 mm 56.3 in

Antenna Dimensions And Mounting Information



Regulatory Compliance/Certifications

Agency	Classification
ISO 9001:2015	Designed, manufactured and/or distributed under this quality management system



* Footnotes

Axial Force (FA)	Maximum forces exerted on a supporting structure as a result of wind from the most critical direction for this parameter. The individual maximums specified may not occur simultaneously. All forces are referenced to the mounting pipe.
Boresite Cross Polarization Discrimination (XPD)	The difference between the peak of the co-polarized main beam and the maximum cross-polarized signal over an angle twice the 3 dB beamwidth of the co-polarized main beam.
Front-to-Back Ratio	Denotes highest radiation relative to the main beam, at 180° ±40°, across the

	<p>band. Production antennas do not exceed rated values by more than 2 dB unless stated otherwise.</p>
Gain, Mid Band	<p>For a given frequency band, gain is primarily a function of antenna size. The gain of Andrew antennas is determined by either gain by comparison or by computer integration of the measured antenna patterns.</p>
Operating Frequency Band	<p>Bands correspond with CCIR recommendations or common allocations used throughout the world. Other ranges can be accommodated on special order.</p>
Packing	<p>Andrew standard packing is suitable for export. Antennas are shipped as standard in totally recyclable cardboard or wire-bound crates (dependent on product). For your convenience, Andrew offers heavy duty export packing options.</p>
Radiation Pattern Envelope Reference (RPE)	<p>Radiation patterns define an antenna's ability to discriminate against unwanted signals. Under still dry conditions, production antennas will not have any peak exceeding the current RPE by more than 3dB, maintaining an angular accuracy of +/-1° throughout</p>
Return Loss	<p>The figure that indicates the proportion of radio waves incident upon the antenna that are rejected as a ratio of those that are accepted.</p>
Side Force (FS)	<p>Maximum side force exerted on the mounting pipe as a result of wind from the most critical direction for this parameter. The individual maximums specified may not occur simultaneously. All forces are referenced to the mounting pipe.</p>
Twisting Moment (MT)	<p>Maximum forces exerted on a supporting structure as a result of wind from the most critical direction for this parameter. The individual maximums specified may not occur simultaneously. All forces are referenced to the mounting pipe.</p>
VSWR	<p>Maximum; is the guaranteed Peak Voltage-Standing-Wave-Ratio within the operating band.</p>
Wind Velocity Operational	<p>The wind speed where the antenna deflection is equal to or less than 0.1 degrees. In the case of Valuline antennas, it is defined as a maximum deflection of 0.3 x the 3 dB beam width of the antenna.</p>
Wind Velocity Survival Rating	<p>The maximum wind speed the antenna, including mounts and radomes, where applicable, will withstand without permanent deformation. Realignment may be required. This wind speed is applicable to antenna with the specified amount of radial ice.</p>