

DO NOT  
SCALE FROM  
THIS PRINT

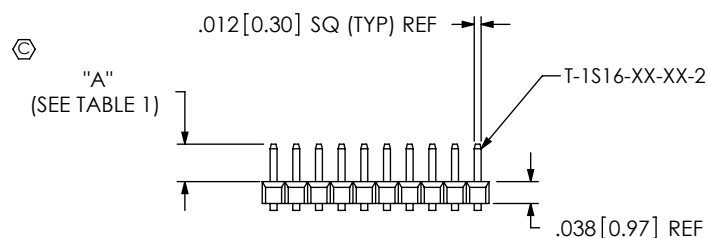
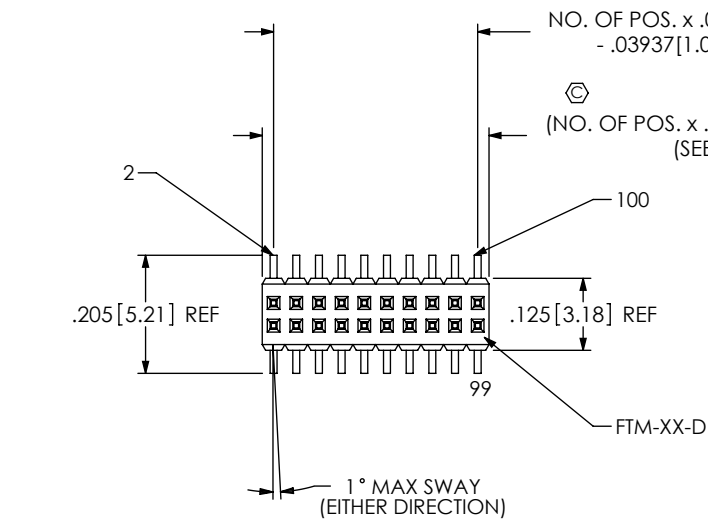


FIG 1  
FTM-1XX-02-X-DV SHOWN

- NOTES:
- 1. PARTS MAY BE CUT TO POSITION; .010 MAX CUT FLASH
  - 2. SHEAR TAILS TO DIMENSION SHOWN; .003 MAX BURR.
  - 3. NOTE DELETED.
  - 4. Ⓢ REPRESENTS A CRITICAL DIMENSION FOR STATISTICAL PROCESS CONTROL.
  - 5. NOTE DELETED.
  - 6. NOTE DELETED.
  - 7. POSITIONS -02 THRU -04 TO BE LAYER PACKAGED, AND POSITIONS -05 THRU -50 TO BE TUBE PACKAGED.
  - 8. PARTS WITH -S OPTION ARE TO APPEAR AS SHOWN IN FIG 2 OR FIG 6 AT SAMTEC'S DISCRETION.
  - 9. 4 POSITIONS MUST BE ADDED TO PART CALL OUT TO ALLOW FOR PUSH ON SHROUDS.  
EX: FTM-125-02-L-DV-S REQUIRES A 29 POSITION STRIP.
  - 10. MINIMUM PUSHOUT FORCE: .5 LB (8 OZ)

TABLE 1		
LEAD STYLE	"A"	TERMINAL
-02	.075 [1.91]	T-1S16-03-XX-2
-03	.065 [1.65]	T-1S16-04-XX-2

FTM-1XX-XX-XX-DV-XX

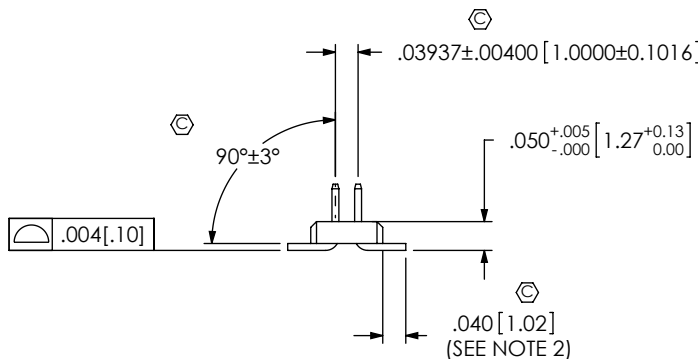
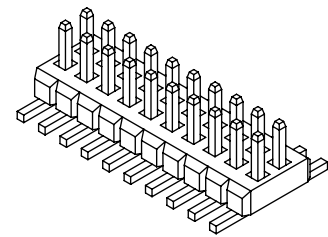
No OF POSITIONS (PER ROW)  
-02 THRU -50 (UNSHROUDED)  
-05 THRU -46 (SHROUDED)

LEAD STYLE  
-02: .075 [1.91] POST HEIGHT  
-03: .065 [1.65] POST HEIGHT

PLATING SPECIFICATION  
-F: FLASH SELECTIVE (USE T-1S16-XX-F-2)  
-L: LIGHT SELECTIVE (USE T-1S16-XX-L-2)  
-H: HEAVY GOLD (USE T-1S16-XX-H-2)  
-G: GOLD (USE T-1S16-XX-G-2)  
-FM: FLASH GOLD W/ MATTE TIN TAILS (USE T-1S16-XX-F-2)  
-LM: LIGHT GOLD W/ MATTE TIN TAILS (USE T-1S16-XX-L-2)

OPTION  
-TR: TAPE & REEL PACKAGING  
-P: PICK AND PLACE PAD (USE PPP-30) (USE PPP-30-NT FOR TAPE & REEL) (AVAILABLE ON POSITIONS -07 THRU -50) (SEE FIG 4, SHT 3)  
-S: END SHROUDS (05 POS. MINIMUM) (SEE NOTE 8) (SEE NOTE 9)  
PRESS FIT SHROUDS: SEE FIG 2  
MOLDED SHROUDS: SEE FIG 6  
-SA: END SHROUDS W/ ALIGNMENT PINS (SEE FIG 3, SHT. 2) (SEE NOTE 9) (05 POS PER ROW MINIMUM, 46 POS PER ROW MAXIMUM) (USE FTM-XX-D, USE FTMH-75-D-ES-XX-X FOR MOLDED END SHROUDS)

ROW OPTION  
-DV: DUAL VERTICAL



PATENT NUMBERS  
5655914 / 5785536

CRITICAL DIMENSION INSPECTION INSTRUCTION TABLE	
ASSEMBLY OPERATION	IN PROCESS INSPECTION
AUTO FILL T-1S16-XX-XX-2	C1, C3 C5, C6, C8
CUT TO POSITION	C2, C7
INSTALL FEM	C9, C10, C16
INSTALL FEM-A	C12
INSTALL PICK AND PLACE PAD	C13
CPC'S INTENTIONALLY DELETED: C4, C11, C14, C15	

<p>UNLESS OTHERWISE SPECIFIED, DIMENSIONS ARE IN INCHES.</p> <p>TOLERANCES ARE:</p> <table><tr><td>DECIMALS</td><td>ANGLES</td></tr><tr><td>.XX: ±.01 [.3]</td><td>3°</td></tr><tr><td>.XXX: ±.005 [.13]</td><td></td></tr><tr><td>.XXXX: ±.0020 [.051]</td><td></td></tr></table>		DECIMALS	ANGLES	.XX: ±.01 [.3]	3°	.XXX: ±.005 [.13]		.XXXX: ±.0020 [.051]		<p>PROPRIETARY NOTE</p> <p>THIS DOCUMENT CONTAINS INFORMATION CONFIDENTIAL AND PROPRIETARY TO SAMTEC, INC. AND SHALL NOT BE REPRODUCED OR TRANSFERRED TO OTHER DOCUMENTS OR DISCLOSED TO OTHERS OR USED FOR ANY PURPOSE OTHER THAN THAT WHICH IT WAS OBTAINED WITHOUT THE EXPRESSED WRITTEN CONSENT OF SAMTEC, INC.</p>	<p>520 PARK EAST BLVD, NEW ALBANY, IN 47150 PHONE: 812-944-6733 FAX: 812-948-5047 e-Mail: info@SAMTEC.com code: 55322</p>
DECIMALS	ANGLES										
.XX: ±.01 [.3]	3°										
.XXX: ±.005 [.13]											
.XXXX: ±.0020 [.051]											
<p>MATERIAL: DO NOT SCALE DRAWING</p> <p>BODY: VECTRA E130 COLOR: BLACK</p> <p>TERMINAL: PHOS BRONZE</p> <p>MAX FLASH ALLOWED: .002 [.05] MAX GATE VESTIGE ALLOWED: .002 [.05]</p> <p>F:\DWG\MISC\MKTG\FTM-1XX-XX-XX-DV-XX-MKT.SLDDRW</p>											

DESCRIPTION: 1mm x 1mm LOW PROFILE SMT STRIP ASM	
DWG. NO. FTM-1XX-XX-XX-DV-XX	
BY: B MENEAR 2/13/2006	SHEET 1 OF 3

FIG 2

-S OPTION  
FTM-1XX-02-X-DV-S SHOWN  
(DIFFERENT AS SHOWN, OTHERWISE SAME AS FIG 1) (SEE NOTE 8) (SEE NOTE 9)  
(PRESS FIT SHROUDS TO HAVE 8 UNUSED SOLDER TAILS AS SHOWN)

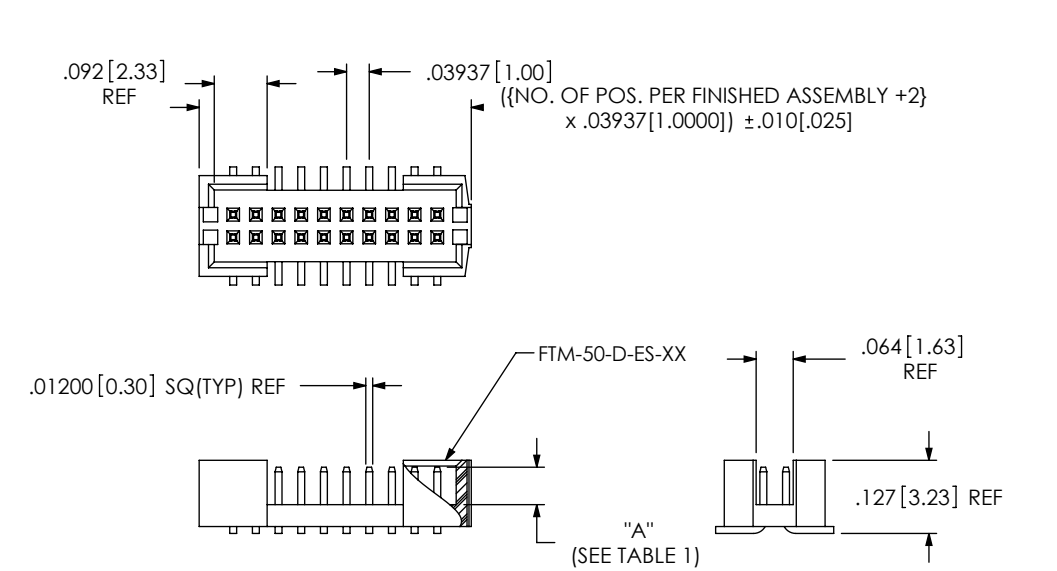
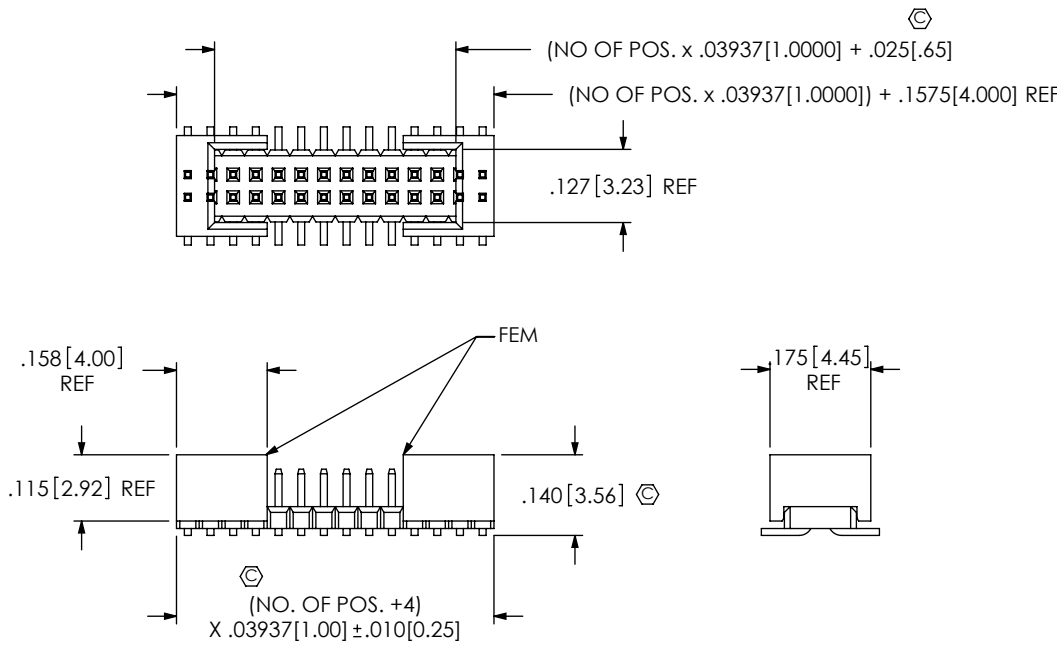
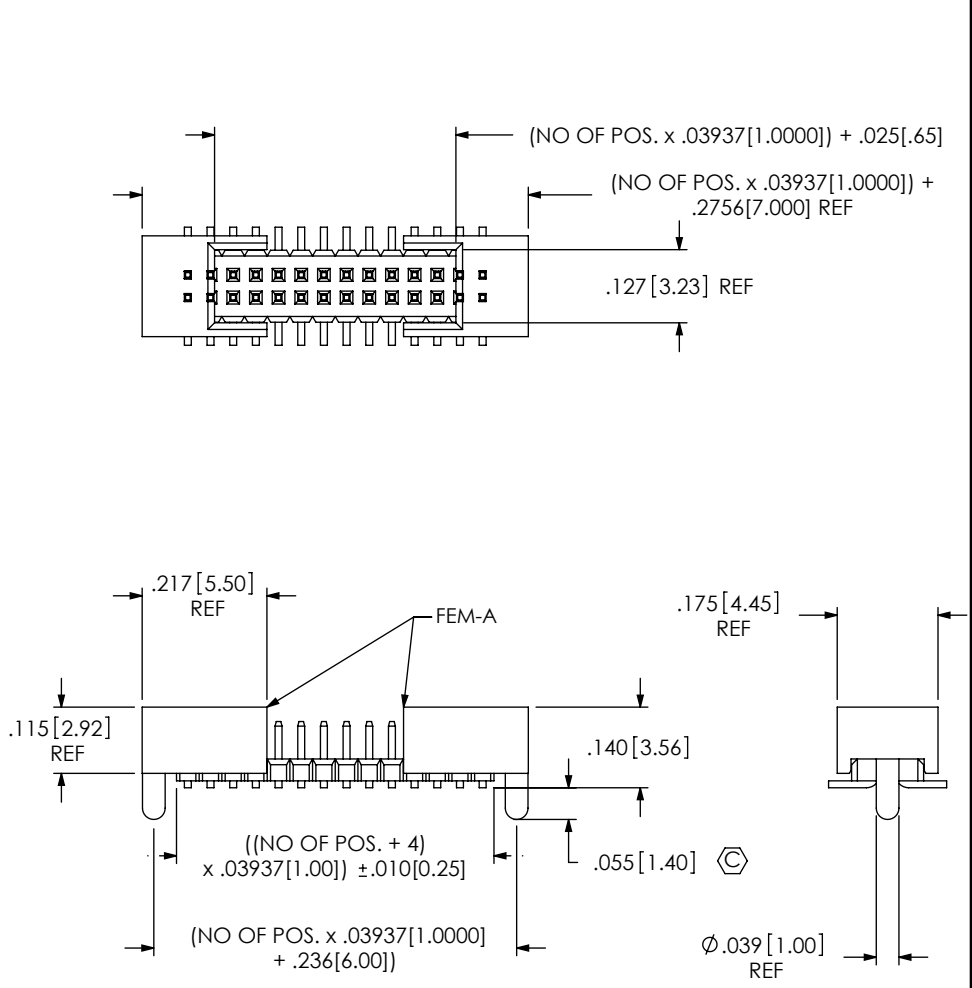


FIG 6

-S OPTION: MOLDED SHROUD  
FTM-1XX-02-X-DV-S SHOWN  
(DIFFERENT AS SHOWN, OTHERWISE SAME AS FIG 1)(SEE NOTE 8)

FIG 3

-SA SHOWN: PRESS FIT SHROUD  
FTM-1XX-02-X-DV-SA  
(DIFFERENT AS SHOWN, OTHERWISE SAME AS FIG 1)  
(SEE NOTE 9)



PROPRIETARY NOTE  
THIS DOCUMENT CONTAINS INFORMATION  
CONFIDENTIAL AND PROPRIETARY TO  
SAMTEC, INC. AND SHALL NOT BE REPRODUCED  
OR TRANSFERRED TO OTHER DOCUMENTS OR  
DISCLOSED TO OTHERS OR USED FOR ANY  
PURPOSE OTHER THAN THAT WHICH IT WAS  
OBTAINED WITHOUT THE EXPRESSED WRITTEN  
CONSENT OF SAMTEC, INC.

DO NOT SCALE DRAWING  
SHEET SCALE: 2:1



520 PARK EAST BLVD, NEW ALBANY, IN 47150  
PHONE: 812-944-6733 FAX: 812-948-5047  
e-Mail: info@SAMTEC.com code: 55322

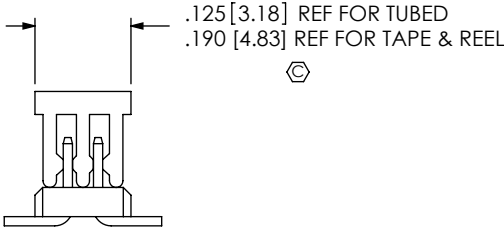
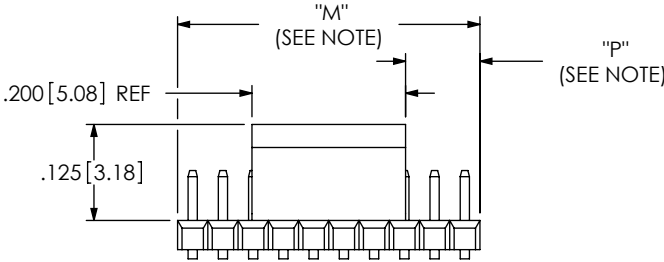
DESCRIPTION:  
1mm x 1mm LOW PROFILE SMT STRIP ASM

DWG. NO. FTM-1XX-XX-XX-DV-XX

BY: B MENEAR 2/13/2006 SHEET 2 OF 3

FIG 4

(DIFFERENT AS SHOWN, OTHERWISE SAME AS FIG 1)

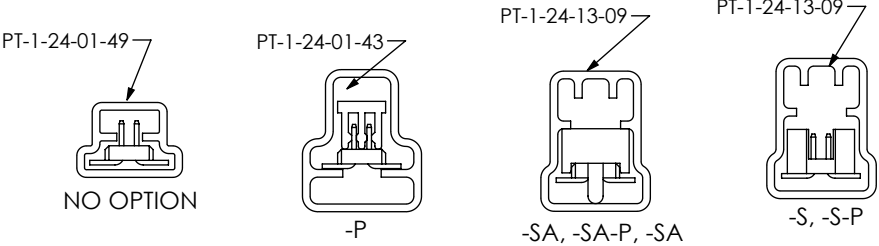


NOTE: "M" = USED MEASURED DIMENSION (REF)  
"P" = {("M" - .200 [5.08]) / 2} +/- .020 [.51]

PACKAGING VIEW

(SEE NOTE 7) NOTE:  
ONLY POSITIONS -05 THRU -50 ARE TO BE  
TUBED. POSITIONS -02 THRU -04 TO BE  
LAYER PACKAGED ONLY. INSERT PLUG TP-30  
AT AN ANGLE INTO PT-1-24-01-49, PLUG  
MUST SUPPORT THE INSULATOR.

PACKAGING TABLE		
OPTIONS	PACKAGING TUBE	PLUGS
W/O OPTION	PT-1-24-01-49	TP-30
-P	PT-1-24-01-43	TP-24
-S, -S-P, -SA, -SA-P	PT-1-24-13-09	TP-24



F:\DWG\MISC\MKTG\FTM-1XX-XX-XX-DV-XX-MKT.SLDDRW

<p><b>PROPRIETARY NOTE</b></p> <p>THIS DOCUMENT CONTAINS INFORMATION CONFIDENTIAL AND PROPRIETARY TO SAMTEC, INC. AND SHALL NOT BE REPRODUCED OR TRANSFERRED TO OTHER DOCUMENTS OR DISCLOSED TO OTHERS OR USED FOR ANY PURPOSE OTHER THAN THAT WHICH IT WAS OBTAINED WITHOUT THE EXPRESSED WRITTEN CONSENT OF SAMTEC, INC.</p> <p>DO NOT SCALE DRAWING</p> <p>SHEET SCALE: 4:1</p>		
	520 PARK EAST BLVD, NEW ALBANY, IN 47150 PHONE: 812-944-6733 FAX: 812-948-5047 e-Mail: info@SAMTEC.com code: 55322	
	DESCRIPTION: 1mm x 1mm LOW PROFILE SMT STRIP ASM	
	DWG. NO. FTM-1XX-XX-XX-DV-XX	
BY: B MENEAR 2/13/2006		SHEET 3 OF 3