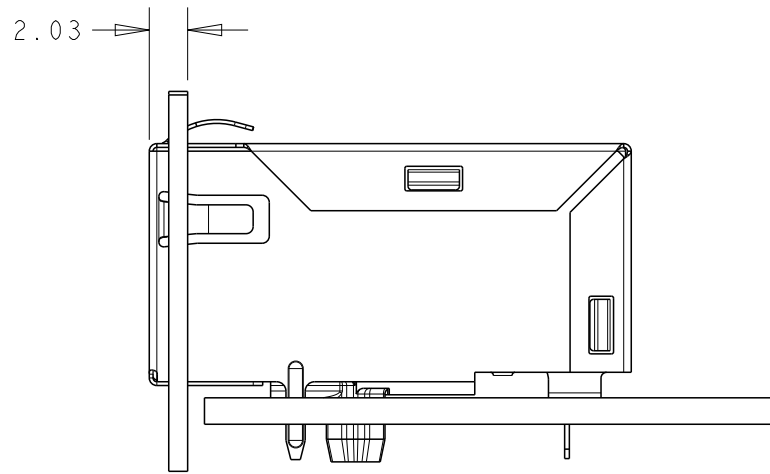
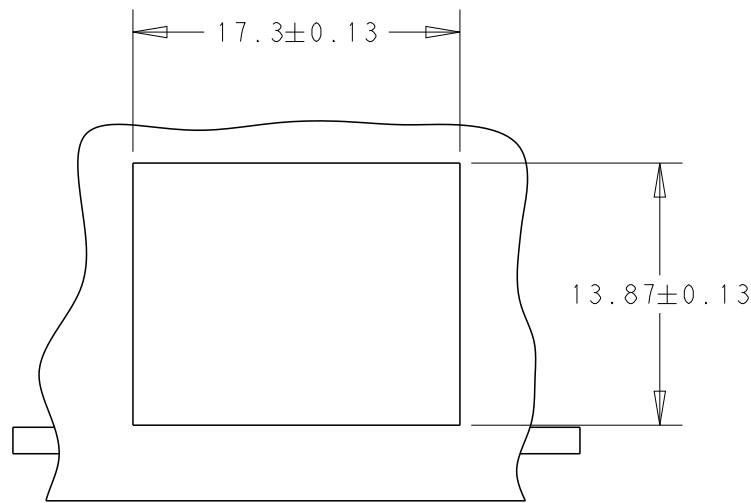
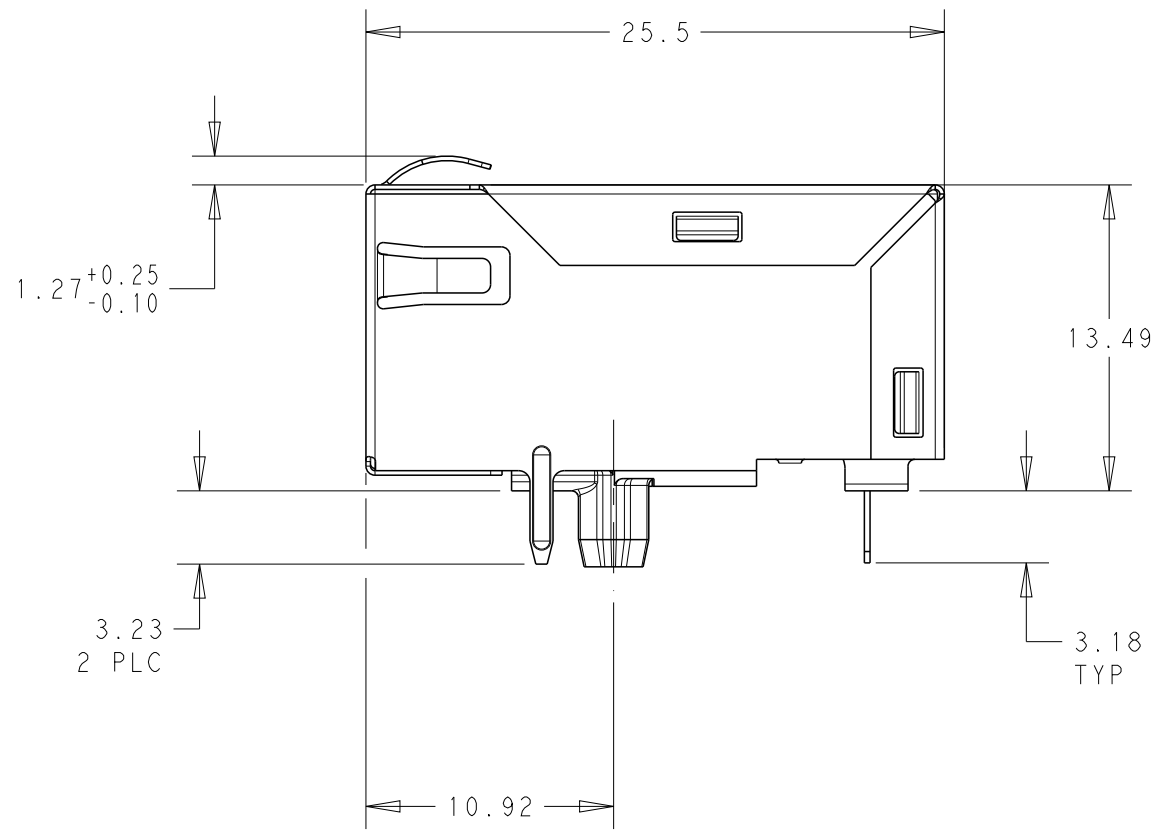
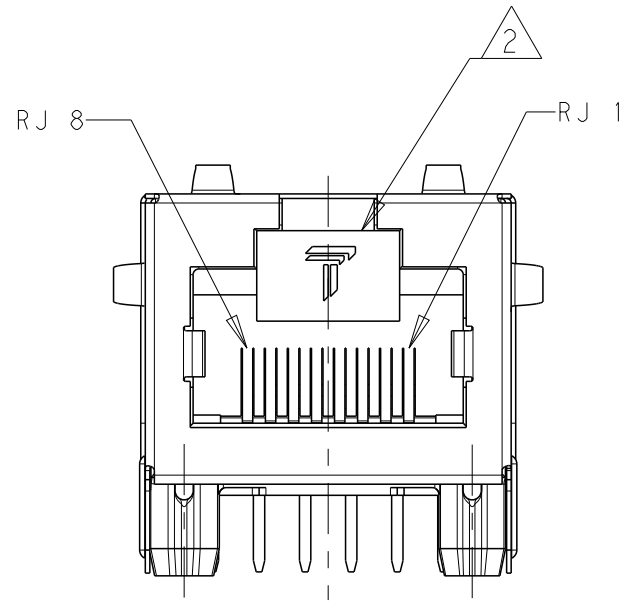
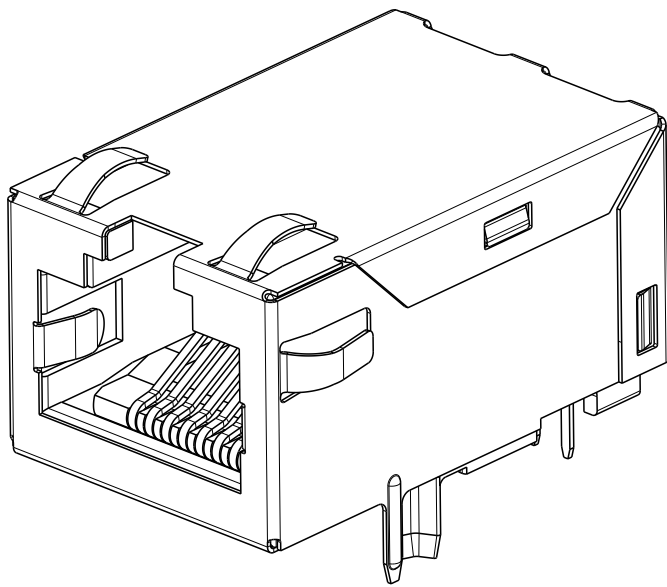
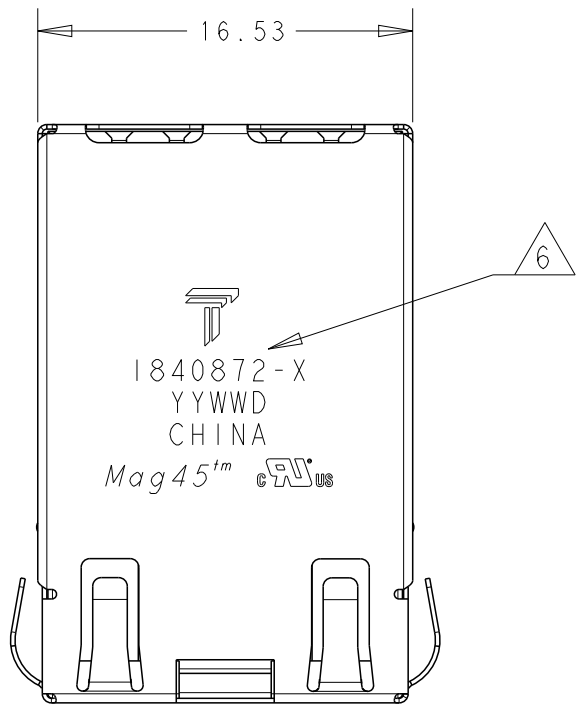


REVISIONS					
P	LTR	DESCRIPTION	DATE	DWN	APVD
	C	LOGO CHANGE	02APR2013	TR	KZ




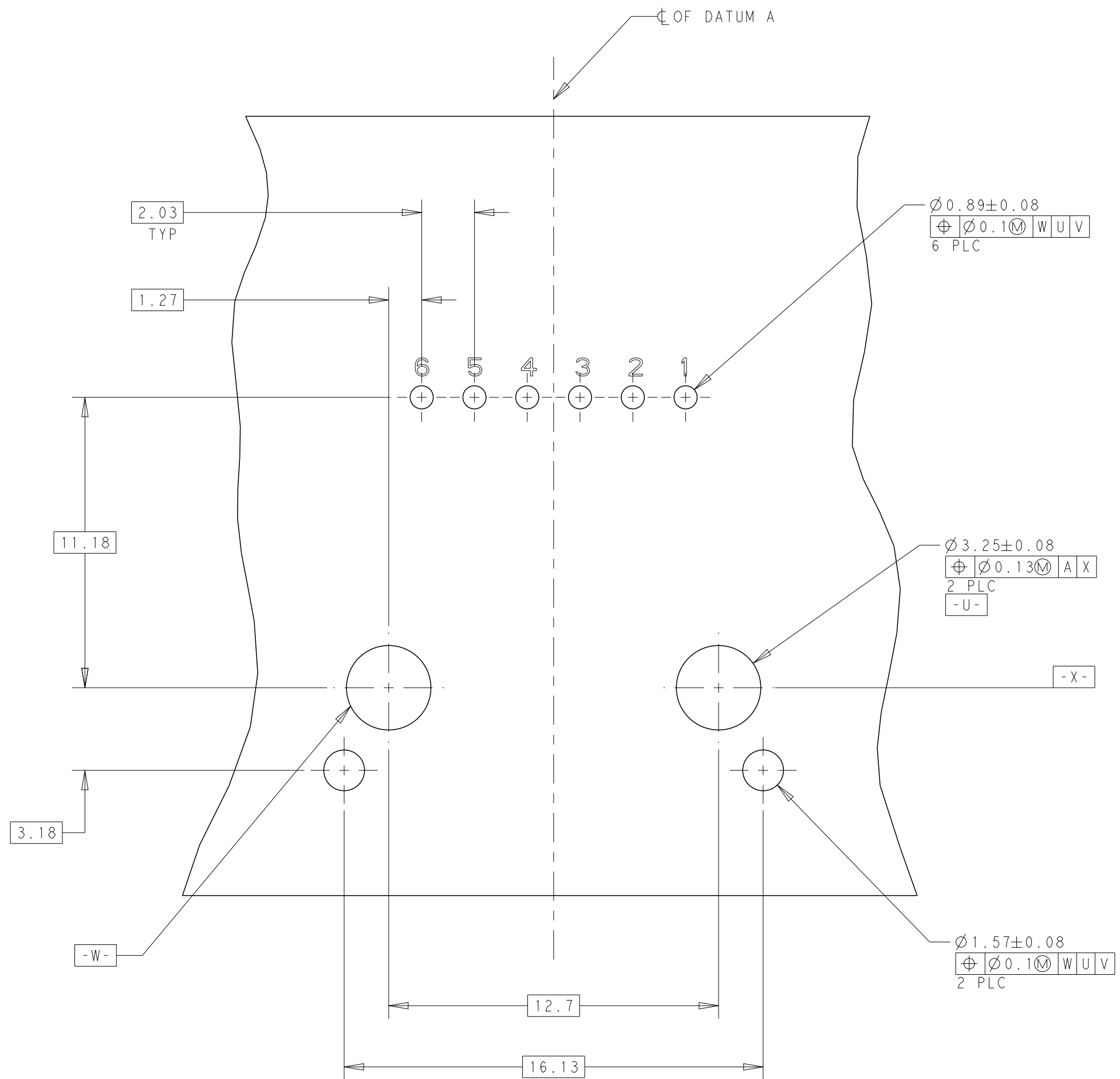
SUGGESTED PANEL CUTOUT

CONNECTOR ASSEMBLED TO PANEL AND PCB

- 1 MATERIAL  
HOUSING: THERMOPLASTIC BLACK, FLAMMABILITY RATING UL 94V-0  
SHIELD: 0.20mm THICK, BRASS  
PREPLATED WITH MIN 0.76um SEMI-BRIGHT NICKEL  
POST-DIPPED WITH 2.54um MIN SAC SOLDER AT GROUND PINS.  
CONTACT TAILS: PHOSPHOR BRONZE,  
WITH 1.27um MIN OVERALL NICKEL UNDERPLATE AND  
SELECTIVE 1.27um MIN GOLD PLATING AT MATING INTERFACE  
SOLDER TAIL: 0.25mm THICK, PHOSPHOR BRONZE, 1.27um MIN OVERALL NICKEL  
UNDERPLATE, 3um MIN TIN PLATE.
- 2 RJ45 CAVITY CONFORMS TO FCC RULES AND REGULATIONS PART 68, SUB-PART F.
- 3 MAGNETICS  
-APPLICATION: 10/100 BASE-T.  
-IMPEDANCE: 100 OHMS  
-TURNS RATIO (CHIP:CABLE): TX = 1:1, RX = 1:1  
-OPEN CIRCUIT INDUCTANCE (OCL): 350uH MIN @100kHz, 0.1VRMS,  
8mADC BIAS FROM 0°C TO 70°C, TX AND RX  
-PERFORMANCE @ 25°C:  
INSERTION LOSS (IL): 1.1dB MAX FROM 0.5MHz TO 100MHz  
RETURN LOSS (RL): 18dB MIN FROM 0.5MHz TO 30MHz  
18-20LOG(f/30)dB MIN FROM 30.1MHz TO 60MHz  
12dB MIN FROM 60.1MHz TO 80MHz  
CROSSTALK ATTENUATION: 35dB MIN FROM 0.5MHz TO 40MHz  
33-20LOG(f/50)dB MIN FROM 40.1MHz TO 100MHz  
COMMON MODE REJECTION RATIO (CMRR): 30dB MIN FROM 0.5MHz TO 100MHz  
-ISOLATION VOLTAGE:2250VDC (MAX) FOR 60 SECONDS WITH A RISE TIME  
OF 500V/SEC.
4. OPERATING TEMPERATURE: 0°C TO 70°C
- 5 THE MAGNETIC CIRCUITS ARE SYMMETRICAL TO SUPPORT AUTO-MDIX OPERATION.
- 6 TRP LOGO, PART NUMBER, DATE CODE, COUNTRY OF ORIGIN, AGENCY APPROVAL  
MARKING LOGO LOCATED IN APPROXIMATE AREA AS SHOWN. DATE CODE YY IS YEAR, WW IS  
WORK WEEK, D IS DAY OF WEEK, WITH SUNDAY=1
7. THE PART IS RECOMMENDED FOR WAVE SOLDERING PROCESS. PREHEAT  
TEMPERATURE IS 120°C TO 160°C, 120 SECONDS TO 180 SECONDS,PEAK  
WAVE SOLDERING TEMPERATURE IS 260°C MAX,10 SECONDS MAX.

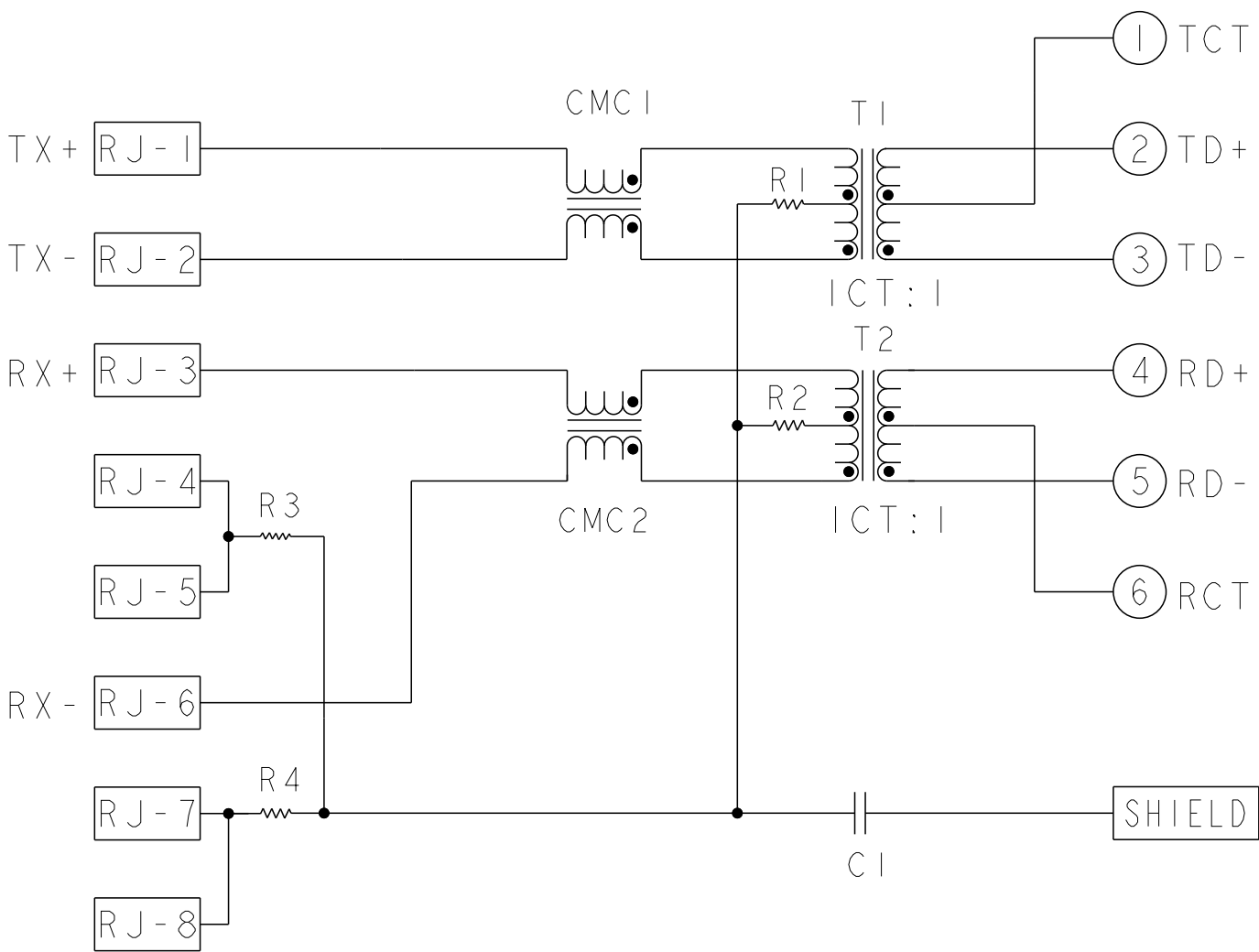
1840872-1
PART NUMBER

THIS DRAWING IS A CONTROLLED DOCUMENT.		DWN TERRY YU 31JAN10	 TRP connector Dongguan China			
DIMENSIONS:		CHK TONY YUAN 31JAN10				
mm		APVD KEITH ZHU 31JAN10				
		PRODUCT SPEC				
		108-104004	NAME 1X1 MAG45(TM) MODULAR JACK, 726P12		RESTRICTED TO	
		APPLICATION SPEC	SIZE A2		CAGE CODE	
MATERIAL		WEIGHT -	DRAWING NO		REV C	
1 -		CUSTOMER DRAWING	SCALE 3:1		SHEET 1 OF 2	




RECOMMENDED PCB LAYOUT  
COMPONENT SIDE VIEW  
TOLERANCE:  $\pm 0.05$

# 726P12 10/100 CIRCUIT $\triangle 5$



C1=1000pF, 2kV, DECOUPLING CAP  
R1~R4=75 $\Omega$ , 1/16W, RESISTORS

THIS DRAWING IS A CONTROLLED DOCUMENT.		DWN TERRY YU CHK TONY YUAN APVD KEITH ZHU	31JAN10 31JAN10 31JAN10	 TRP connector Dongguan China	
DIMENSIONS:	TOLERANCES UNLESS OTHERWISE SPECIFIED:	PRODUCT SPEC	108-104004		
mm	0 PLC $\pm 0.25$ 1 PLC $\pm 0.25$ 2 PLC $\pm 0.25$ 3 PLC $\pm 0.25$ 4 PLC $\pm 0.25$ ANGLES $\pm 1^\circ$ FINISH	APPLICATION SPEC	-	NAME	1X1 MAG45(TM) MODULAR JACK, 726P12 10/100 CIRCUIT, SHIELD, NO LEDS
MATERIAL	-	WEIGHT	-	SIZE	A2
Customer Drawing		SCALE	3:1	SHEET	2 OF 2
		REV	C		