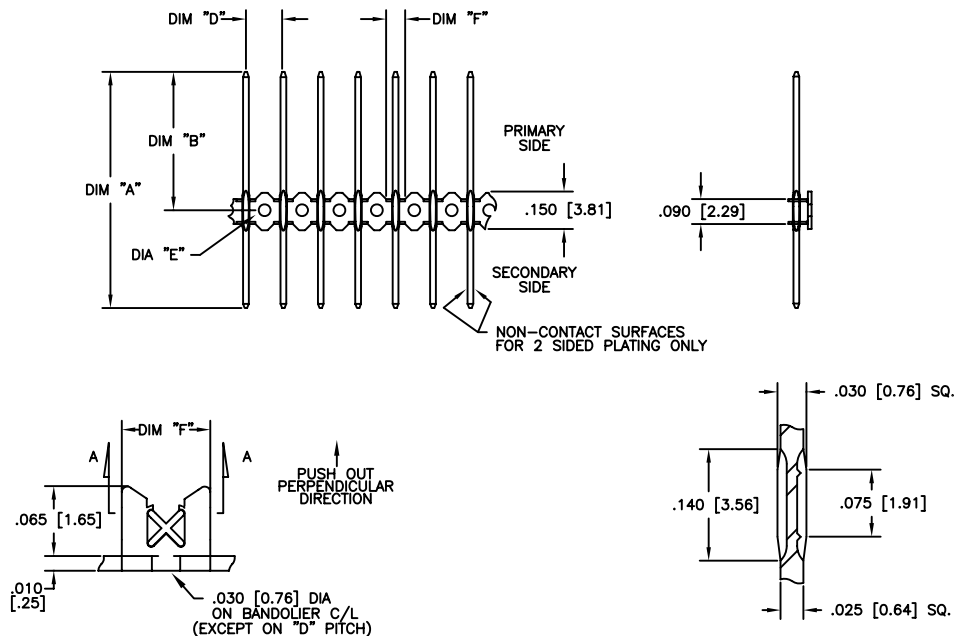


PRODUCT NUMBER

SEE TABLE



## OPTIONS:

- \* PIN LENGTHS
- \* BANDOLIER PITCH (.100" [2.54mm], .125" [3.18mm], .150" [3.81mm])
- \* GOLD, TIN-LEAD AND TIN PLATING LENGTHS
- \* GOLD THICKNESS

## SPECIFICATIONS—MECHANICAL:



- \* DURABILITY: 200 CYCLES — WHEN USED WITH NORTEL GOLD CONTACT CONNECTORS
- \* PERPENDICULAR PUSH OUT FORCE: 3-5 1/2 LBS / PIN TYP.
- \* OPERATING TEMPERATURE: -55°C TO +85°C

## SPECIFICATIONS—ELECTRICAL:

- \* CURRENT RATING(CONTINUOUS): 2 AMP/CONTACT MAX

## FEATURES:

- \* .025" [0.63mm] SQUARE PINS
- \* SELECTIVE GOLD PLATING IN CONTACT AREA:  
2 SIDED AND 4 SIDED GOLD PLATING AVAILABLE
- \* GOLD, TIN-LEAD OR TIN PLATING AT EITHER END
- \* PROGRESSIVE TAPER NOSE (FROM 4 SIDE COINING) AT BOTH ENDS FOR SMOOTH ENGAGEMENT IN CONTACT
- \* BANDOLIERED (.100" [2.54mm], .125" [3.18mm], .150" [3.81mm] PITCH) FOR BACKPANEL OR HEADER INSERTION
- \* TIN-LEAD, TIN OR GOLD STRIKE IS PLATED IN AREA WHERE SOLDERING TO BOARD IS REQUIRED.
- \* FLUTE AREA DESIGNED FOR RETENTION IN .062"-.093" [1.57mm-2.36mm] THICK PCB TYPICALLY
- \* DESIGNED FOR .037+.001/-0.002" [0.94+0.03, -0.05] PCB FINISHED HOLE SIZE (FHS)

mat'l. code				surface		tolerance		projection		product family			
NOTE 1				ASME Y14.5		ASME Y14.5				NORCON			
ltr	ecn no	dr	date	tolerances unless otherwise specified						title			
E	V06-0040	HTB	1/23/06	angles	fin					INCH/MM			
F	V06-0662	JRV	2006-07-11							scale N.T.S.			
				dr	T. BREWBAKER	1/23/06				dwg no			
				engr	T. BREWBAKER	1/23/06				sheet 1 of 3			
				chr	T. BREWBAKER	1/23/06				54364			
				appd	T. BREWBAKER	1/23/06				A			
sheet index		revision sheet		F	F	F						type	
				1	2	3						CUSTOMER Drawing	



PRODUCT NUMBER	ENG. CODE	DIM "A"	DIM "B"	MATING END NOTE 2	DIM "D" (PITCH)	DIM "E"	DIM "F"	AVG. QTY. PER REEL	GOLD HEIGHT	NOTES
A0271525	NPS25042L1B	DISCONTINUED								
A0274630	NPS25042L2B									
A0274631	NPS25042L3B									
A0274863	NPS25042L2C									
A0274864	NPS25042L3C									
A0275017	NPS25042L1C									
A0275018	NPS25042L4B									
A0275019	NPS25042L4C									
A0275022	NPS25042L5B									
A0275023	NPS25042L5C									
A0275027	NPS25042L6B	1.230/31.24	.660/16.76	P & S	.150/3.81	.050/1.27	.070/1.78	26,500	.300/7.62 - P	-
A0275027LF	-	1.230/31.24	.660/16.76	P & S	.150/3.81	.050/1.27	.070/1.78	26,500	.300/7.62 - P	4
A0275028	NPS25042L6C	DISCONTINUED								
A0299834	NPS25042L7C									
A0329013	NPS25042L8B									
A0344895	NPS25042L1B									
A0344896	NPS25042L1C									
A0344897	NPS25042L2B									
A0344898	NPS25042L2C	DISCONTINUED								
A0344899	NPS25042L3B									
A0344899LF	-									
A0344900	NPS25042L3C									
A0344900LF	-									
A0344901	NPS25042L4B									
A0344901LF	-	DISCONTINUED								
A0344902	NPS25042L4C									
A0344903	NPS25042L5B									
A0344904	NPS25042L5C	1.230/31.24	.660/16.76	P & S	.125/3.18	.040/1.02	.070/1.78	32,000	.300/7.62 - P .200/5.08 - S	-
A0344904LF	-	1.230/31.24	.660/16.76	P & S	.125/3.18	.040/1.02	.070/1.78	32,000	.300/7.62 - P .200/5.08 - S	4

mat'l. code				surface ASME Y14.5		tolerance ASME Y14.5		projection		product family NORCON	
NOTE 1				tolerances unless otherwise specified		INCH/MM		title		FREE STANDING PINS STAKE AND SOLDER	
ltr	ecr no	dr	date	angles	line in	scale N.T.S.		dwg no		sheet 2 of 3	size
F								54364		A4	
				dr	T. BREWBAKER	1/23/06		FCI			
				engr	T. BREWBAKER	1/23/06		type		CUSTOMER Drawing	
				chr	T. BREWBAKER	1/23/06					
				appd	T. BREWBAKER	1/23/06					
sheet index	revision sheet										



FCIconnect.com

PRODUCT NUMBER	ENG. CODE	DIM "A"	DIM "B"	MATING END	DIM "D" (PITCH)	DIM "E"	DIM "F"	AVG. QTY. PER REEL	GOLD HEIGHT	NOTES
AO344905	NPS25042L6B	DISCONTINUED								
AO344906	NPS25042L6C									
AO344907	NPS25042L7C									
AO344908	NPS25042L8B									

## NOTES:

- ①. BANDOLIER MATERIAL: C26000  
PIN MATERIAL: C51000  
CONTACT AREA FINISH:  $30\mu$ " /  $0.76\mu$  Au  
CONTACT UNDERPLATE:  $50\mu$ " /  $1.27\mu$  Ni  
SOLDER AREA FINISH:  $100-200\mu$ " /  $2.54-5.08\mu$  SnPb  
LF SOLDER AREA FINISH:  $100\mu$ " /  $2.54\mu$  Sn  
OVERALL UNDERPLATE:  $20\mu$ " /  $0.51\mu$  Ni  
FLUTE AND CENTRAL SECTION FINISH:  
-FOR PINS WITH PRIMARY AND SECONDARY GOLD  
PLATING: Au STRIKE  
-FOR ALL OTHER PINS:  $60-200\mu$ " [ $1.52-5.08\mu$ ] SnPb  
-FOR OTHER LF PINS:  $100\mu$ " /  $2.54\mu$  SnPb
- ②. P: PRIMARY SIDE OF PIN  
S: SECONDARY SIDE OF PIN
3. PACKAGING: CARDBOARD REELS WITH PAPER INTERLEAVE  
RIGHT OR LEFT REELING OPTION (PER DRAWING 57399)
- ④. PART NUMBERS WITH AN LF SUFFIX MEET EUROPEAN  
UNION DIRECTIVES AND OTHER COUNTRY REGULATIONS  
AS DESCRIBED IN GS-22-008.

mat'l. code				surface		tolerance		projection		product family	
NOTE 1				ASME Y14.5		ASME Y14.5				NORCON	
ltr	ecr no	dr	date	tolerances unless otherwise specified							
F				angles	line	INCH/MM					
						scale N.T.S.					
		dr	T. BREWBAKER	1/23/06							
		engr	T. BREWBAKER	1/23/06							
		chr	T. BREWBAKER	1/23/06							
		appd	T. BREWBAKER	1/23/06							
sheet	revision										
index	sheet										
										dwg no 54364 sheet 3 of 3 size A4 type CUSTOMER Drawing	