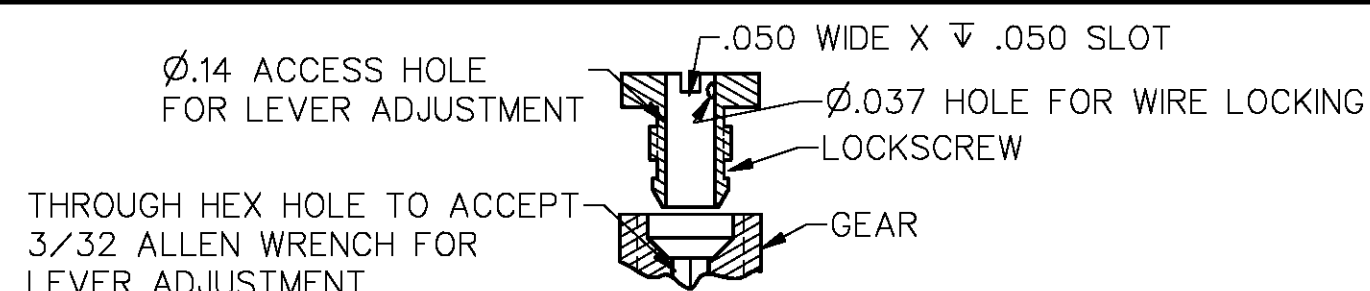


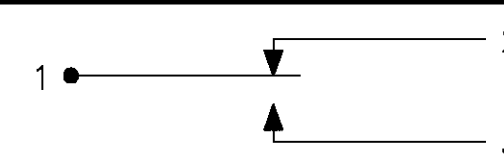
CHARACTERISTICS

FULL SCALE



2X LEVER ADJUSTMENT DETAIL

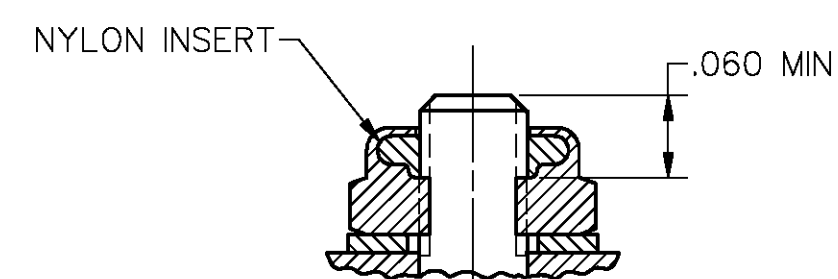
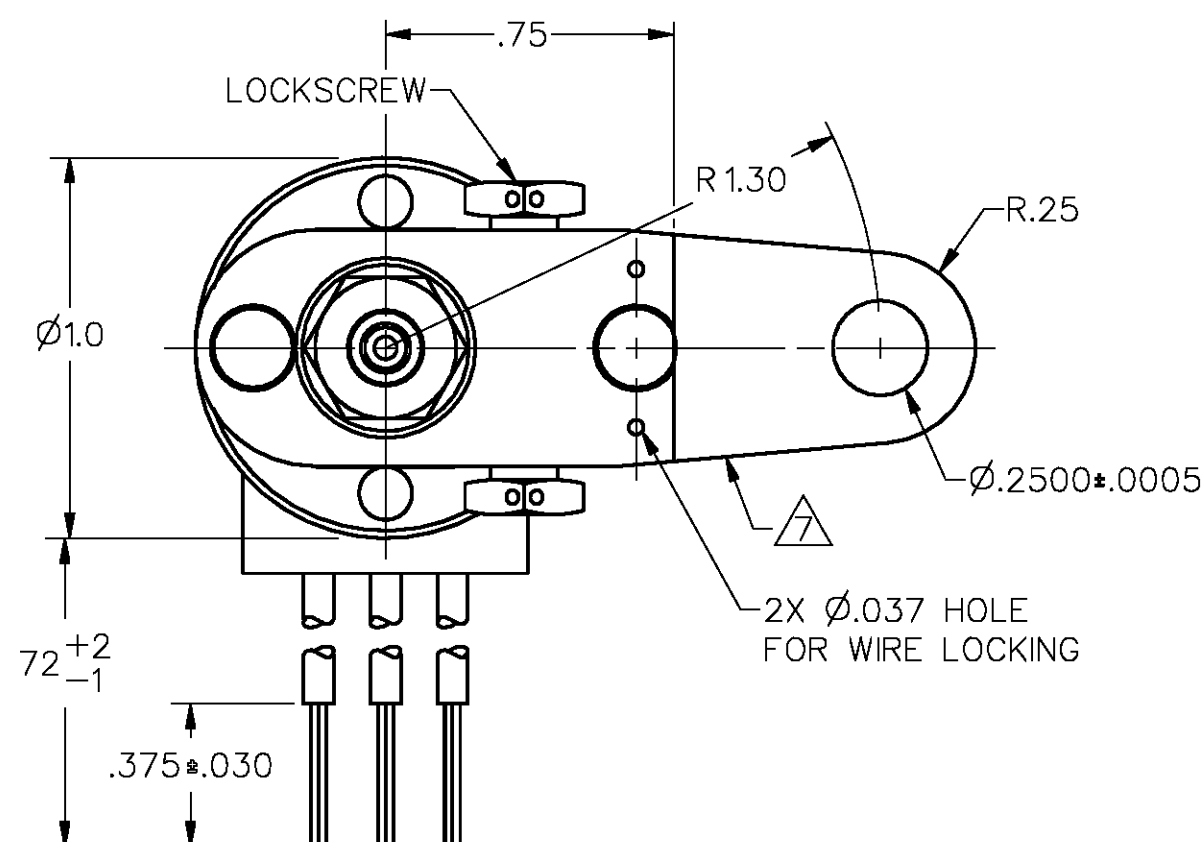
LEVER MAY BE ADJUSTED FOR AN INFINITE NUMBER OF POSITIONS THRU 360°. ADJUSTMENT IS MADE BY LOOSENING THE LOCK NUT AND THEN THE LOCKSCREW AND TURNING GEAR UNTIL LEVER IS IN DESIRED POSITION. LOCKSCREW AND LOCK NUT ON SHAFT IS THEN TIGHTENED TO POSITIVELY LOCK LEVER IN POSITION



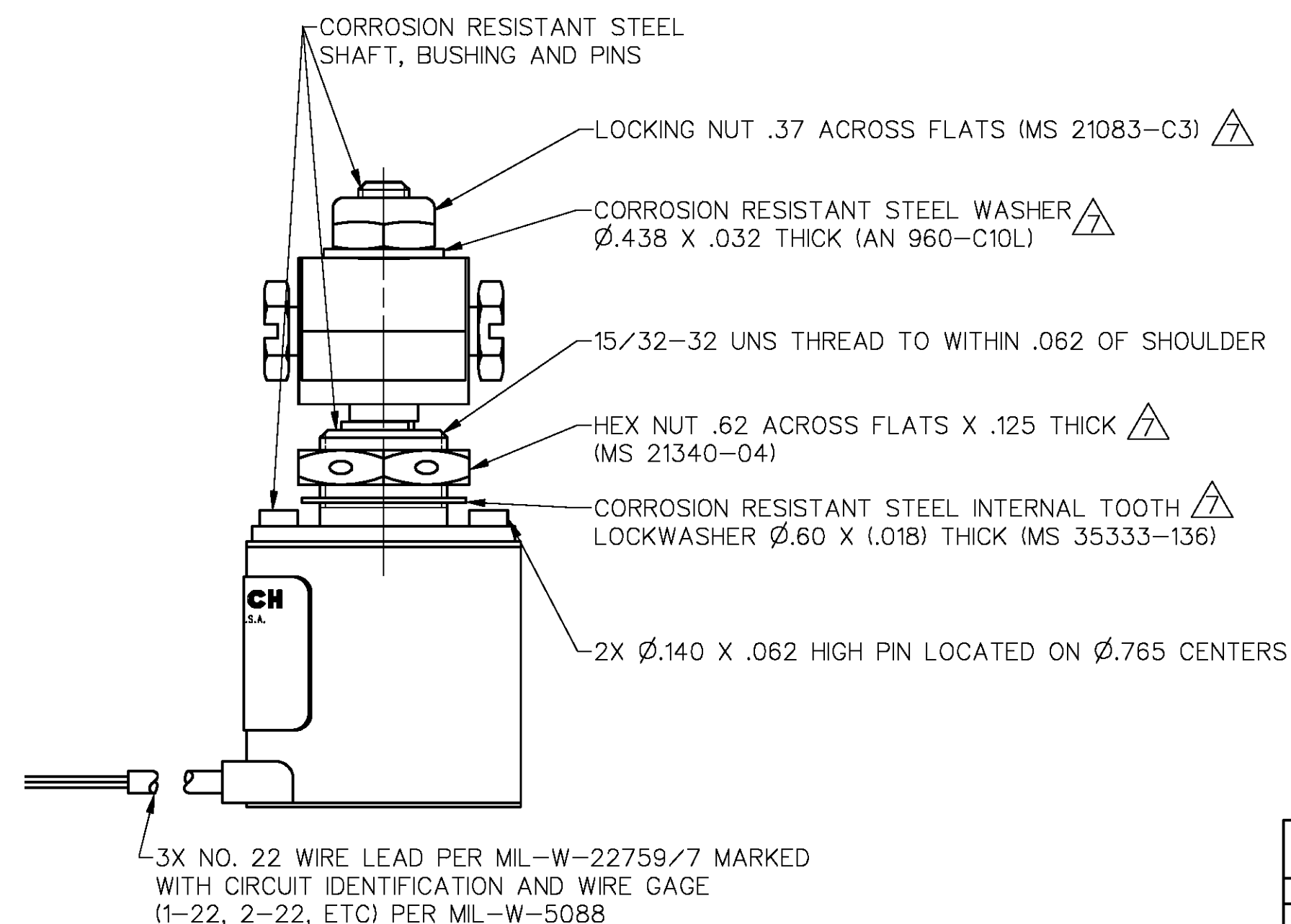
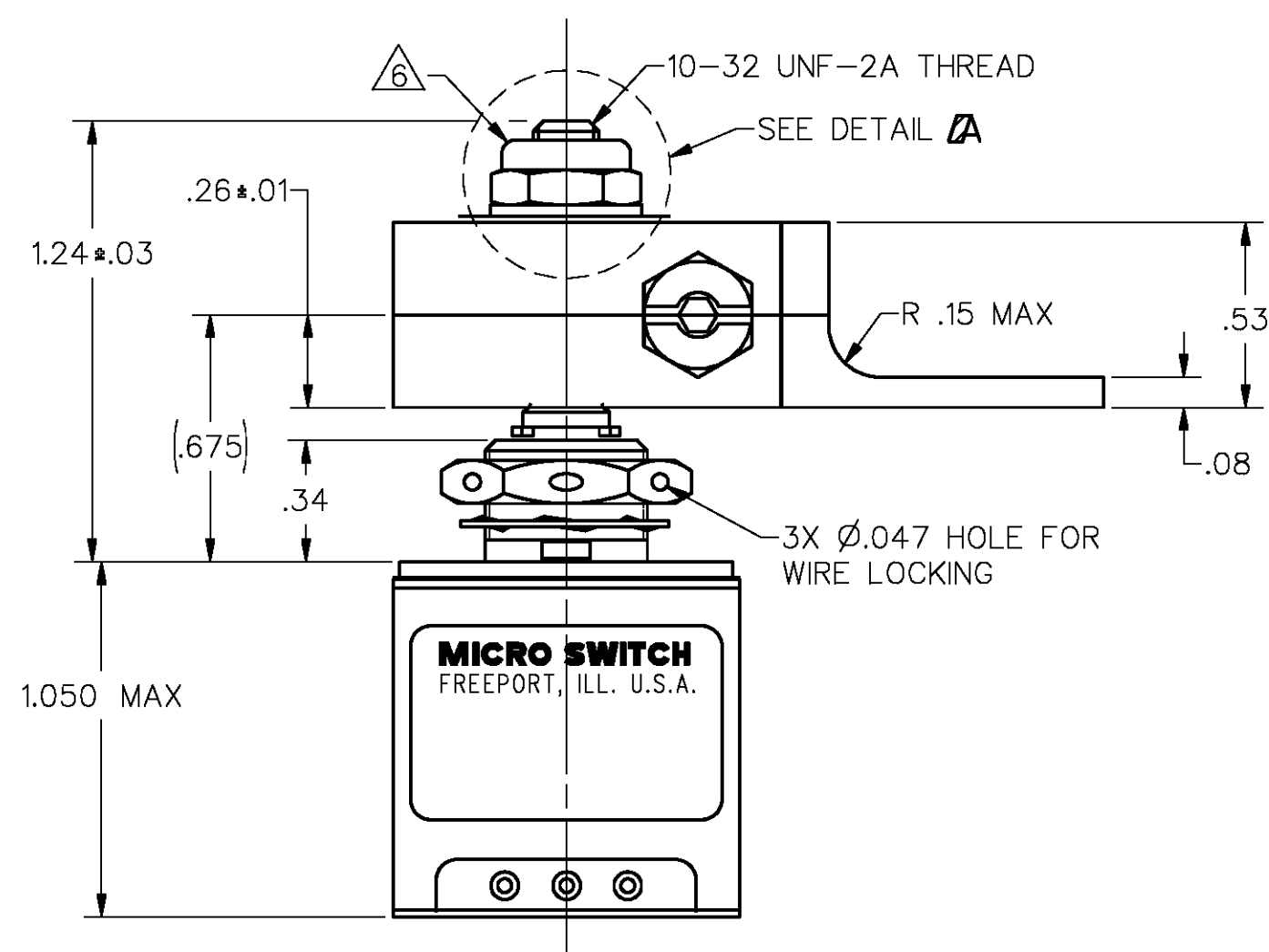
CIRCUIT DIAGRAM

NOTES

- NOTES
- 1 - CORROSION RESISTANT STEEL ENCLOSURE
 - 2 - UNIT PROVIDES NO SHAFT RESTORING TORQUE. THE ACTUATING DEVICE MUST CONTROL MOVEMENT OF THE SHAFT
 - 3 - CIRCUIT DIAGRAM, CATALOG LISTING AND FEDERAL MANUFACTURING CODE AND CUSTOMER PART NO. 5M2079-001 ARE SHOWN ON NAMEPLATE
 - 4 - SWITCH SEALED PER MIL-S-8805 SYMBOL 4
 - 5 GOLD CONTACT BASIC SWITCH
 - 6 DO NOT APPLY MORE THAN 20-25 IN-LBS OF TORQUE WHEN TIGHTENING LOCKING NUT
 - 7 HARDWARE MAY BE PACKAGED UNASSEMBLED PER MIL-S-8805



DETAIL
(SHOWN SECTIONED)
SCALE 3:1



CHARACTERISTICS		ELECTRICAL DATA		
OPERATING TORQUE — — — — 3 IN-LB MAX		CONTACT ARRANGEMENT S P D T		
<div>PRETRAVEL</div> <div>DIFFERENTIAL TRAVEL</div> <div>OVERTRAVEL</div> <div>FREE POSITION</div> <div>SEE DETAIL ABOVE</div>		LOAD	28 VDC $\frac{5}{\text{A}}$	
			SEA LEVEL	50,000 FT
		RES	1.0	1.0
		IND	0.5	0.5


THIS DRAWING COVERS A PROPRIETARY ITEM AND IS THE PROPERTY OF MICRO SWITCH. A DIVISION OF HONEYWELL. THIS DRAWING IS NOT TO BE COPIED OR USED WITHOUT THE APPROVAL OF MICRO SWITCH.

MICRO SWITCH
a Honeywell Division

FED. MFG. CODE 81828

SWITCH-ENCLOSED

CATALOG LISTING
41EN345-6

THIRD ANGLE PROJECTION		
		
SCALE 2 : 1		
DO NOT SCALE PRINT		
UNLESS OTHERWISE SPECIFIED TOLERANCES ARE		
ONE PLACE	(.0)	±.030
TWO PLACES	(.00)	±.015
THREE PLACES	(.000)	±.005
ANGLES		±
WEIGHT .52 LB MAX		

Mouser Electronics

Authorized Distributor

Click to View Pricing, Inventory, Delivery & Lifecycle Information:

[Honeywell:](#)

[41EN345-6](#)