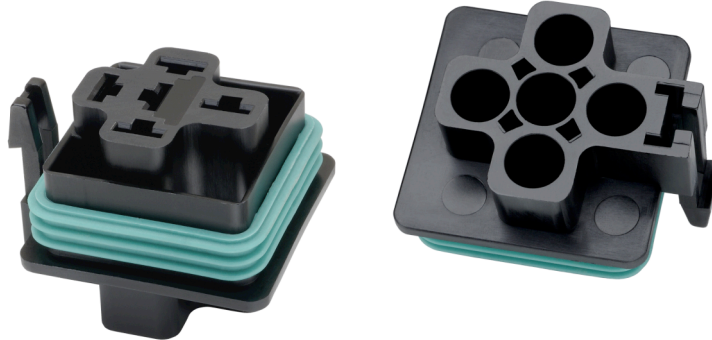


# WEATHERPROOF AUTOMOTIVE RELAY CONNECTOR



**TERMINAL CHART**

FCI AUTO.	AMP	WIRE GAUGE
JW-1230-2		12 - 14
JW-1630-2		16 - 18
	60413-1	18 - 22
	42100-1, 2	14 - 18
	42281-2	14 - 18
	60249-2	12 - 16
	180351-2	12

**SEAL CHART**

WIRE GAUGE*	CC PART NUMBER	Color	INSULATION O.D. inch (mm) - inch (mm)
PLUG	312XP	Gray	- -
12 - 14	312X13-LY	Yellow	.134 (3.4) - .154 (3.9)
14 - 16	312X09-L	Gray	.102 (2.6) - .134 (3.4)
18 - 22	312X06-LO	Orange	.063 (1.6) - .094 (2.4)

\* GLX wire

Custom Connector expands its transportation product line by adding the BR05-WP socket for weatherproof relays. This socket is designed to fit most ISO mini weatherproof relays and uses push to seat terminations. Individual wire seals are also available and sold separately. One socket and 3 sizes of wire seals will meet all your needs. All components are rated to 125°C temperature ratings with V2 or better flame resistance. The integrity of the system passed ASTM Salt Spray test requirements. It is also IP67 and passed the submersible test. This design is both cost and labor effective, making it the best value in the market.

## **Benefits:**

- Easily converts to 4-way or 5-way connector
- All components are V2 or better flammability rating
- IP 67 and 125°C temperature rated
- Passed ASTM B117/SAE 1455 Salt Spray Test
- Excellent chemical resistance
- Push to seat and seal terminals
- Universal fit and seal for most ISO mini relays
- Individual wire seals, 3 sizes fit all
- Labor saving installation
- Great value

## **CUSTOM CONNECTOR CORPORATION**

1738 E. 30<sup>TH</sup> STREET, CLEVELAND, OH 44114

PHONE: 216-241-1679 \* FAX: 216-241-5529

E-MAIL: [SALES@CUSTOMCONNECTOR.COM](mailto:SALES@CUSTOMCONNECTOR.COM) / WEB: [WWW.CUSTOMCONNECTOR.COM](http://WWW.CUSTOMCONNECTOR.COM)