



SAW Components

Data Sheet K 9350 M

Data Sheet

A large, stylized, 3D graphic of the word "EPCOS" in a light gray, sans-serif font. The letters are slightly tilted and have a soft, glowing effect. In the background, there is a faint, abstract pattern of concentric circles and lines, suggesting a technical or scientific theme.



SAW Components

K 9350 M

IF Filter for Audio Applications

38,90 MHz

Data Sheet

Standard

- B/G
- D/K

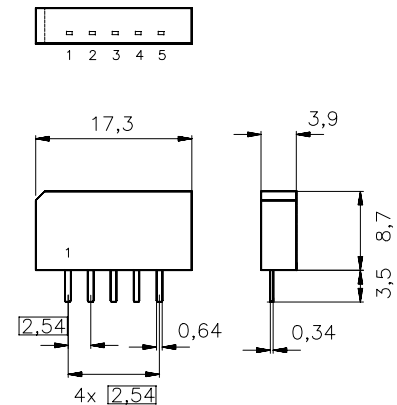
Plastic package **SIP5K**

Features

- TV IF audio filter with pass band for sound carriers at 32,40 MHz (D/K) and 33,40 MHz (B/G)

Terminals

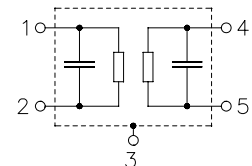
- Tinned CuFe alloy



Dimensions in mm, approx. weight 1,0 g

Pin configuration

- 1 Input
- 2 Input - ground
- 3 Chip carrier - ground
- 4 Output
- 5 Output



| Type | Ordering code | Marking and package according to | Packing according to |
|----------|-------------------|----------------------------------|----------------------|
| K 9350 M | B39389-K9350-M100 | C61157-A1-A15 | F61074-V8067-Z000 |

Maximum ratings

| | | | | |
|----------------------------|-----------|---------|----|-----------------------|
| Operable temperature range | T_A | -25/+65 | °C | |
| Storage temperature range | T_{stg} | -40/+85 | °C | |
| DC voltage | V_{DC} | 5 | V | between any terminals |
| AC voltage | V_{pp} | 10 | V | between any terminals |



SAW Components

K 9350 M

IF Filter for Audio Applications

38,90 MHz

Data Sheet

Characteristics

Reference temperature:

$$T_A = 25\text{ °C}$$

Terminating source impedance:

$$Z_S = 50\ \Omega$$

Terminating load impedance:

$$Z_L = 2\text{ k}\Omega \parallel 3\text{ pF}$$

| | | min. | typ. | max. | |
|--|---------------------|------|----------------------|------|---------------------------|
| Insertion attenuation α | | | | | |
| Reference level for the following data | 33,40 MHz | 10,6 | 12,1 | 13,6 | dB |
| Relative attenuation α_{rel} | | | | | |
| Sound carrier | 32,40 MHz | -1,3 | -0,3 | 0,7 | dB |
| Picture carrier | 38,90 MHz | 42,0 | 51,0 | — | dB |
| Color carrier | 34,47 MHz | 16,0 | 20,0 | — | dB |
| Adjacent picture carrier | 30,90 MHz | 34,0 | 42,0 | — | dB |
| Adjacent sound carrier | 40,40 MHz | 42,0 | 49,0 | — | dB |
| Lower sidelobe | 25,00 ... 30,90 MHz | 32,0 | 37,0 | — | dB |
| Upper sidelobe | 40,40 ... 45,00 MHz | 40,0 | 47,0 | — | dB |
| Impedance at 33,40 MHz | | | | | |
| Input: $Z_{\text{IN}} = R_{\text{IN}} \parallel C_{\text{IN}}$ | | — | 0,8 \parallel 11,1 | — | k Ω \parallel pF |
| Output: $Z_{\text{OUT}} = R_{\text{OUT}} \parallel C_{\text{OUT}}$ | | — | 5,3 \parallel 3,1 | — | k Ω \parallel pF |
| Temperature coefficient of frequency | TC_f | — | -72 | — | ppm/K |



SAW Components

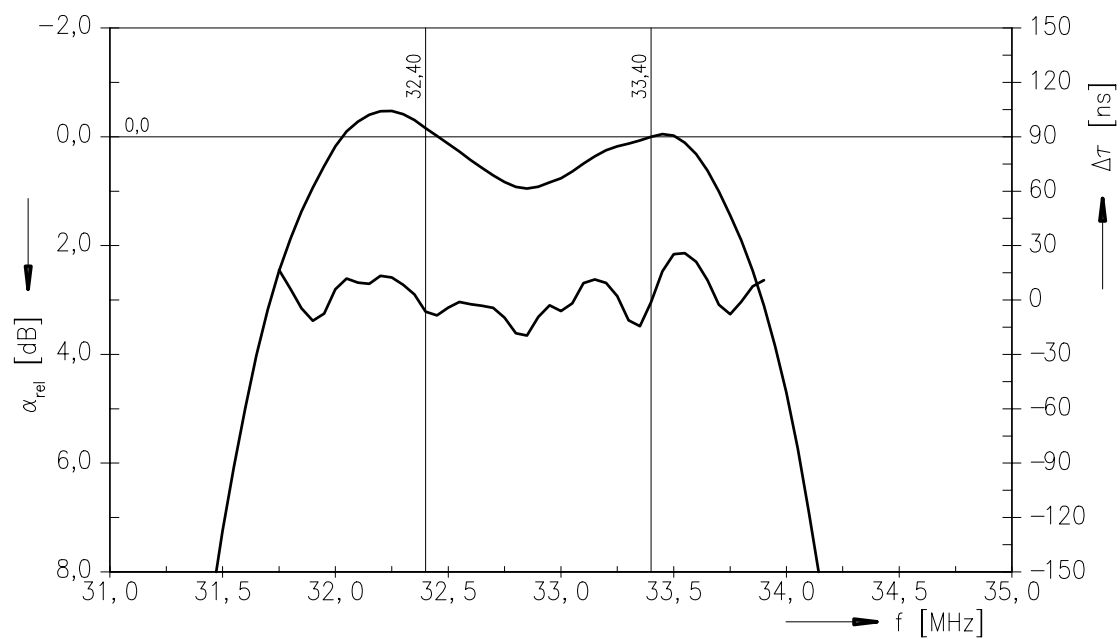
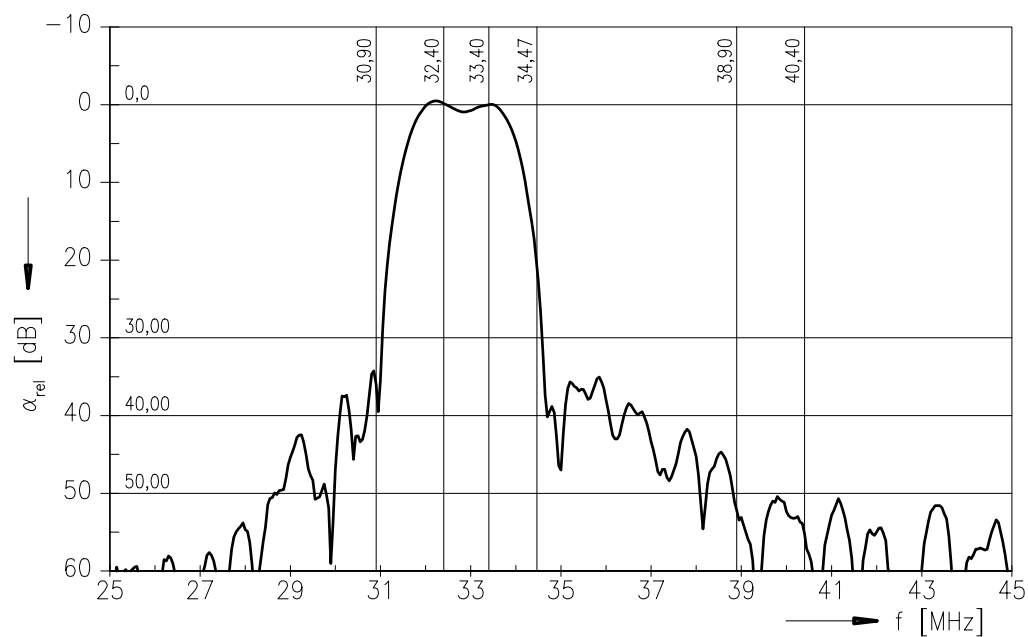
K 9350 M

IF Filter for Audio Applications

38,90 MHz

Data Sheet

Frequency response





| | |
|---|------------------|
| SAW Components | K 9350 M |
| IF Filter for Audio Applications | 38,90 MHz |

Data Sheet

Published by EPCOS AG
Surface Acoustic Wave Components Division, SAW CE MM PD
P.O. Box 80 17 09, D-81617 München

© EPCOS AG 2001. All Rights Reserved.

As far as patents or other rights of third parties are concerned, liability is only assumed for components per se, not for applications, processes and circuits implemented within components or assemblies.

The information describes the type of component and shall not be considered as assured characteristics.

Terms of delivery and rights to change design reserved.

For questions on technology, prices and delivery please contact the sales offices of EPCOS AG or the international representatives.

Due to technical requirements components may contain dangerous substances. For information on the type in question please also contact one of our sales offices.