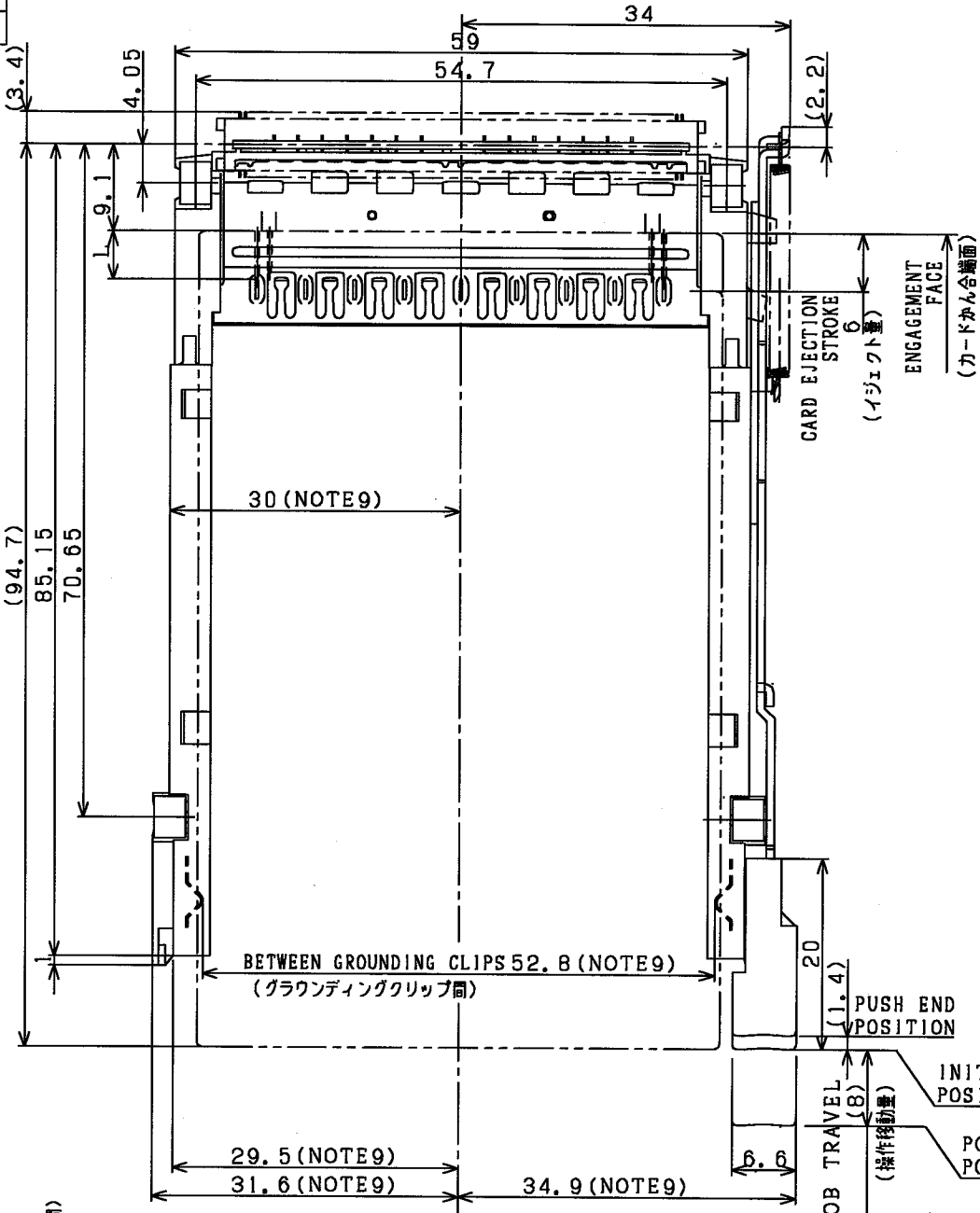


PRODUCT NO.
62229-00RR0
62229-00RR0LF

D REVISED J05-0431 M.H. 7/15/05

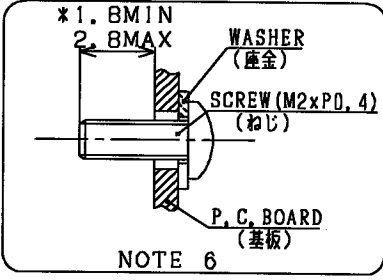
REVISIONS				
REV	DESCRIPTION	ECN	BY	DATE
A	RELEASED	J80006	M.K	1/8/98
B	REVISED	J80237	N.T	5/25/98
C	REVISED	J03-0194	M.H	4/25/03



BOARD CONNECTOR
(ボードコネクタ)

M2xPD.4
4-SPACER
(取付部)

EFFECTIVE INTERNAL SCREW THREAD LENGTH
(有効ねじ部)

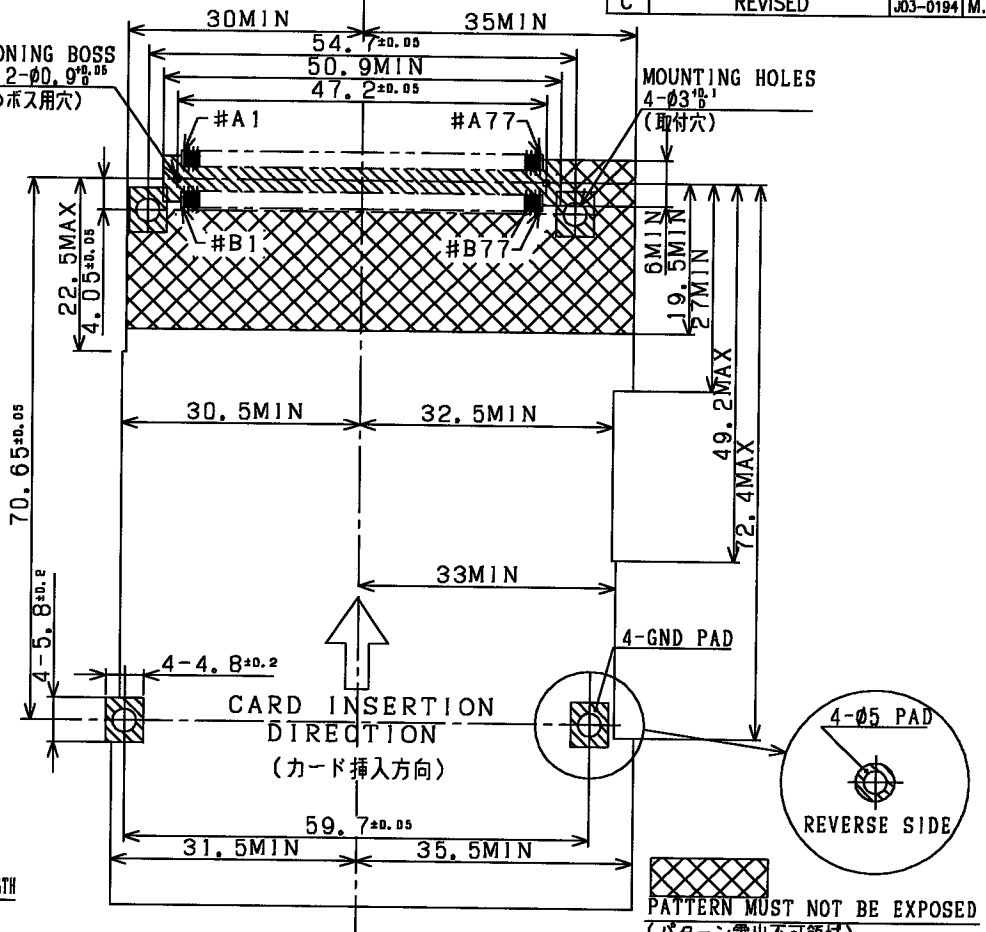


NOTE 6

TABLE1 PIN CONTACT LENGTH LIST
(表1 タンシ長さ一覧)

PIN # (タンシ番号)	L (mm)
a1, a17, a34, a35, a51, a68 b1, b17, b34, b35, b51, b68	5.00±0.1
a36, a67, b36, b67	3.50±0.1
OTHER (上記以外)	4.25±0.1

POSITIONING BOSS
HOLE 2-ØD. 9^{+0.05}₋₀
(位置決めボス用穴)



RECOMMENDED P.C. BOARD LAYOUT
(MOUNTING FACE SIDE)
推奨基板取付寸法図
(実装面側)

11. SHOW DIMENSIONS WITHIN 10mm OF END OF INSERTED CARD.
(カードかん合端より10mm範囲の寸法を示す。)
 10. SHOW PIN ROOT DIMENSIONS.
(タンシ根元寸法を示す。)
 9. SHOW P.C. BOARD MOUNTING DIMENSIONS.
(基板実装時の寸法を示す。)
 8. RECOMMENDED TIGHTENING TORQUE: 0.127N·m (1.3kgf·cm)
(ネジ止めの推奨トルク: 0.127N·m (1.3kgf·cm))
 7. FOUR SIZE M2xPD.4 SCREWS WITH WASHER (CUSTOMER SUPPLIED) ARE REQUIRED FOR FASTENING CONNECTOR TO P.C. BOARD.
(基板への取り付けはM2xPD.4ネジ及び座金を各4個使用する。)
 6. DETERMINE MOUNTING SCREW LENGTH UPON CHECKING P.C. BOARD THICKNESS AND 't' DIMENSION.
(「t」SHOWS REQUIRED SCREW LENGTH FROM MOUNTING SURFACE.)
(取付ネジの長さは、使用する基板厚と寸法tを確認の上決定のこと。)
 5. SEE TABLE1 FOR PIN CONTACT LENGTH.
(タンシ長さは表1に示す。)
 4. SEE "RE-AH" BOARD CONNECTOR PRODUCT DRAWING FOR RECOMMENDED PATTERN DIMENSIONS.
(推奨パターン寸法図は、"RE-AH"ボードコネクタ製品図に示す。)
 3. THIS PRODUCT USED WITH "RE-AH" BOARD CONNECTOR.
(本品は、"RE-AH"ボードコネクタと組み合わせて使用する。)
 2. BODY AND KNOB COLOR IS BLACK.
(本体及びノブの色は黒。)
- NOTE (注記) 1. THIS PRODUCT IS STANDARD TYPE, RIGHT SIDE KNOB TYPE.
(本品は、スタンダードタイプ、操作ノブ右側出し。)

TITLE 2-STEP SLOT CONNECTOR
(EJ-AC SERIES)

PRODUCT FAMILY Header CB III

SCALE 2/1

SIZE C

DWG. NO. 62229

REV D

SHEET 1 of 3

