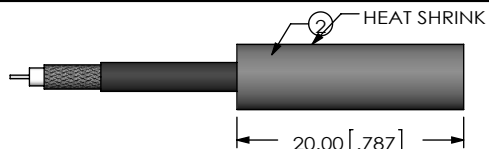
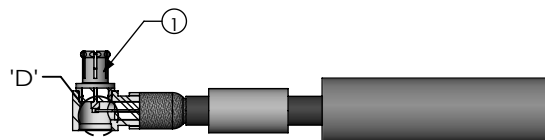


IN-PROCESS 1
STRIP CABLE AND TIN INNER CONDUCTOR

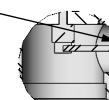


IN-PROCESS 2
ADD HEAT SHRINK TUBE & FERRULE



IN-PROCESS 3
FLARE SHIELD & ADD SUB ASSEMBLY

END OF CABLE DIELECTRIC
SHOULD SEAT AGAINST
CONTACT CUP

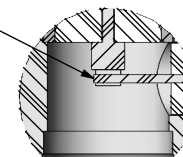


DETAIL 'D'
SCALE 4 : 1

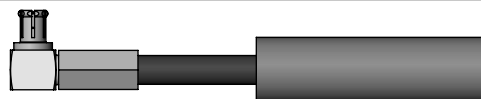


IN-PROCESS 4
CRIMP FERRULE
(USE CRIMP HAND TOOL #CAT-RF-FER-01, AND .128" DIE SIZE)

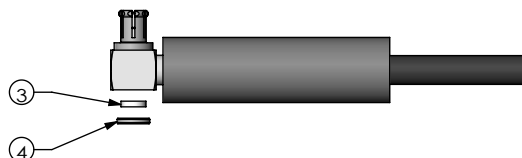
CABLE CENTER CONDUCTOR
SHOULD NOT PROTRUDE
OUTSIDE CONTACT CUP
AFTER FERRULE IS CRIMPED



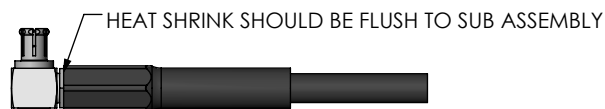
DETAIL 'E'
SCALE 6 : 1



IN-PROCESS 5
SOLDER SIGNAL SOCKET



IN-PROCESS 6
PRESS INSULATOR AND CAP WITH CHAMFERED EDGE INWARDS



IN-PROCESS 7
ACTIVATE HEAT SHRINK

F:\DWG\MISC\MKTG\MMCX7-P-C-XX-RA-CA3-MKT.SLDRW

PROPRIETARY NOTE

THIS DOCUMENT CONTAINS CONFIDENTIAL AND PROPRIETARY INFORMATION AND ALL DESIGN, MANUFACTURING, REPRODUCTION, USE, PATENT RIGHTS AND SALES RIGHTS ARE EXPRESSLY RESERVED BY SAMTEC, INC. THIS DOCUMENT SHALL NOT BE DISCLOSED, IN WHOLE OR PART, TO ANY UNAUTHORIZED PERSON OR ENTITY NOR REPRODUCED, TRANSFERRED OR INCORPORATED IN ANY OTHER PROJECT IN ANY MANNER WITHOUT THE EXPRESS WRITTEN CONSENT OF SAMTEC, INC.

DO NOT SCALE DRAWING

SHEET SCALE: 3:2

samtec

520 PARK EAST BLVD, NEW ALBANY, IN 47150
PHONE: 812-944-6733 FAX: 812-948-5047
e-Mail: info@SAMTEC.com code 55322

DESCRIPTION:
TRUE 75 OHM, MMCX RIGHT ANGLE PLUG, RG179

DWG. NO.
MMCX7-P-C-XX-RA-CA3

BY: ALVIN W 10/08/2011 SHEET 2 OF 2