



EVERLIGHT ELECTRONICS CO.,LTD.

DEVICE NUMBER : DLE-952-023 REV : 1.2

ECN : PAGE : 1/5

1.9mm Round Subminiature "Gull Wing" Lead (Square Base) LEDs

MODEL NO : 95-21VGC/TR7

Features :

- Compatible with automatic placement equipment.
- Compatible with infrared and vapor phase reflow solder process.
- IC compatible.
- EIA std package.
- Mono-color type.

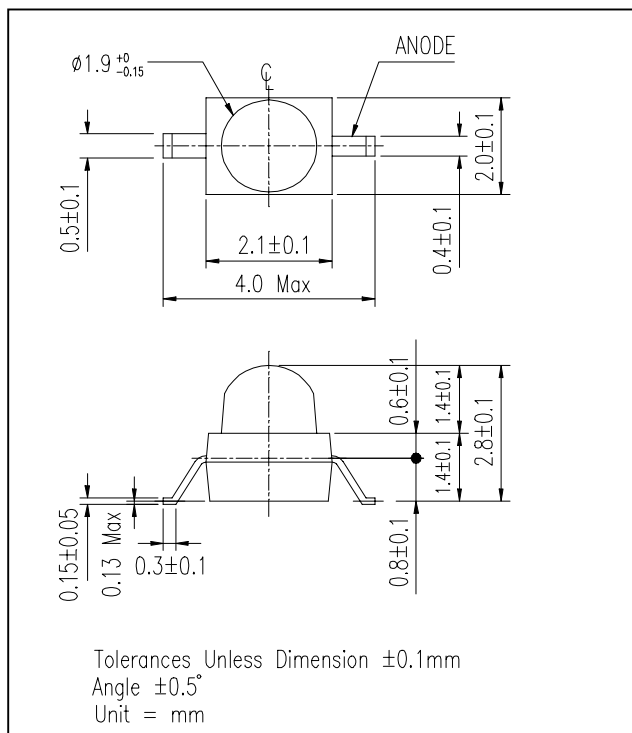
Descriptions :

- Besides, light weight makes them ideal for miniature applications, etc.
- Furthermore by automation assembly machines, the accuracy is anticipated.

Applications :

- Small indicator for outdoor applications.
- Flat backlight for LCD, switches and symbols.
- Indicator and backlight in office equipment.
- Indicator and backlight for battery driven equipment.
- Indicator and backlight for audio and video equipment.
- Automotive : backlighting in dashboards and switches.
- Telecommunication : indicator and backlighting in telephone and fax.
- General use.

Package Dimensions :



PART NO.	Chip		Lens Color
	Material	Emitted Color	
95-21VGC/TR7	GaP	Green	Water Clear

OFFICE : NO. 25,Lane 76,Sec.3, Chung Yang Rd., Tucheng 236, Taipei, Taiwan, R.O.C.

TEL : 886-2-2267-2000,2267-9936

FAX : 886-2-2267-6244,22676189,22676306

<http://www.everlight.com>



EVERLIGHT ELECTRONICS CO.,LTD.

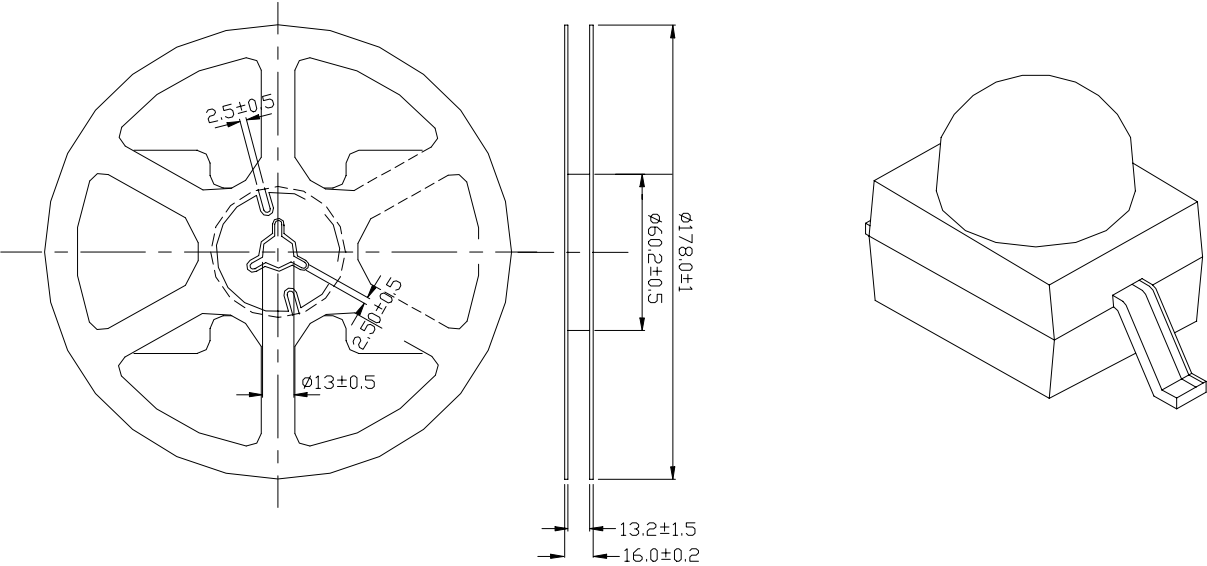
DEVICE NUMBER : DLE-952-023 REV : 1.2

ECN : PAGE : 2/5

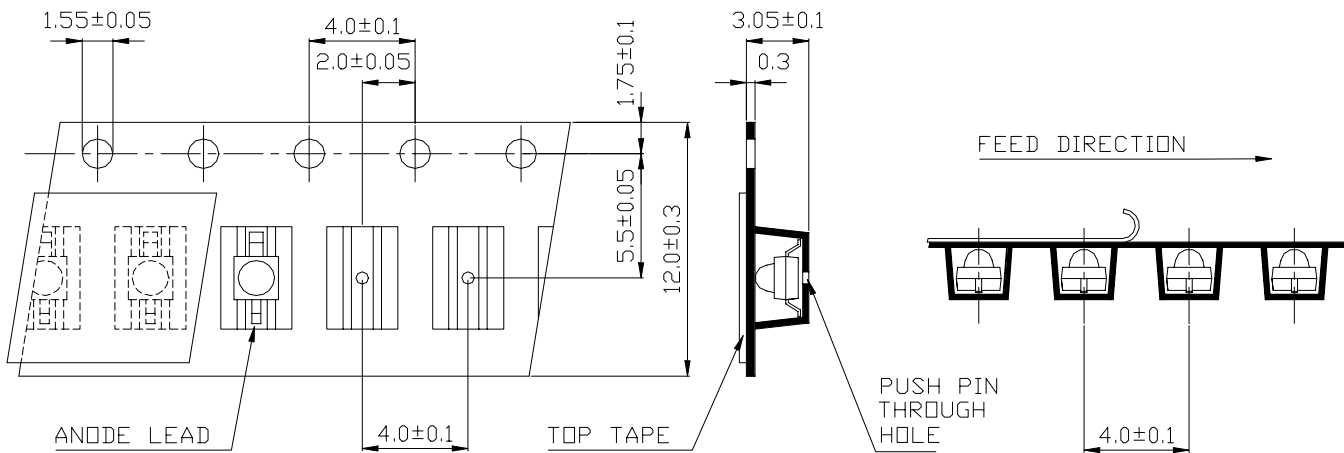
1.9mm Round Subminiature "Gull Wing" Lead (Square Base) LEDs

MODEL NO : 95-21VGC/TR7

■ Package Dimensions



■ Loaded Quantity Per Reel 1000 Pcs/Reel



1. All dimensions are in millimeters .
2. Lead spacing is measured where the leads emerge from the package.
3. Protruded resin under flange 1.5 mm (0.59") max.



EVERLIGHT ELECTRONICS CO.,LTD.

DEVICE NUMBER : DLE-952-023 REV : 1.2

ECN : PAGE : 3/5

1.9mm Round Subminiature "Gull Wing" Lead (Square Base) LEDs

MODEL NO : 95-21VGC/TR7

■ Absolute Maximum Ratings at Ta = 25°C

Parameter	Symbol	Rating	Unit
Reverse Voltage	V _R	5	V
Forward Current	I _F	30	mA
Operating Temperature	T _{opr}	-40 ~ +85	°C
Storage Temperature	T _{stg}	-40 ~ +100	°C
Soldering Temperature	T _{sol}	260 ± 5 (for 5 sec)	°C
Power Dissipation	P _d	100	mW
Peak Forward Current(Duty 1/10 @ 1KHZ)	I _F (Peak)	160	mA

■ Electronic Optical Characteristics :

Parameter	Symbol	MIN.	TYP.	MAX.	Unit	Condition
Luminous Intensity	I_v	30	50	----	mcd	$I_F = 20\text{mA}$
Viewing Angle	2θ 1/2	----	25	----	deg	
Peak Wavelength	λ_p	----	570	----	nm	
Dominant Wavelength	λ_d	----	571	----	nm	
Spectrum Radiation Bandwidth	$\Delta\lambda$	----	30	----	nm	
Forward Voltage	V_F	1.7	2.1	2.4	V	
Reverse Current	I_R	----	----	10	μA	$V_R=5\text{V}$



EVERLIGHT ELECTRONICS CO.,LTD.

DEVICE NUMBER : DLE-952-023 REV : 1.2

ECN : PAGE : 4/5

1.9mm Round Subminiature "Gull Wing" Lead (Square Base) LEDs

MODEL NO : 95-21VGC/TR7

■ Reliability Test Items And Conditions

NO.	Item	Test Conditions	Test Hours/ Cycle	Sample Size	Ac/Re
1	Solder Heat	TEMP : 260°C ± 5 °C	5 SEC	76 PCS	0/1
2	Temperature Cycle	<div style="display: flex; align-items: center; justify-content: center;"> <div style="text-align: right; margin-right: 10px;">H : +85°C</div> <div style="text-align: center; margin-right: 10px;"> <div style="border-top: 1px solid black; height: 20px; margin: 0 auto; width: 10px;"></div> <div style="border-left: 1px solid black; border-right: 1px solid black; height: 100px; position: relative; margin: 0 auto;"> <div style="position: absolute; top: 0; left: 50%; transform: translateX(-50%);">↑</div> <div style="position: absolute; bottom: 0; left: 50%; transform: translateX(-50%);">↓</div> </div> <div style="text-align: left; margin-left: 10px;">L : -55°C</div> </div> <div style="margin-left: 10px;"> <div style="margin-bottom: 10px;">30 min</div> <div style="margin-bottom: 10px;">5 min</div> <div>30 min</div> </div> </div>	50 CYCLE	76 PCS	0/1
3	Thermal Shock	<div style="display: flex; align-items: center; justify-content: center;"> <div style="text-align: right; margin-right: 10px;">H : +100°C</div> <div style="text-align: center; margin-right: 10px;"> <div style="border-top: 1px solid black; height: 20px; margin: 0 auto; width: 10px;"></div> <div style="border-left: 1px solid black; border-right: 1px solid black; height: 100px; position: relative; margin: 0 auto;"> <div style="position: absolute; top: 0; left: 50%; transform: translateX(-50%);">↑</div> <div style="position: absolute; bottom: 0; left: 50%; transform: translateX(-50%);">↓</div> </div> <div style="text-align: left; margin-left: 10px;">L : -10°C</div> </div> <div style="margin-left: 10px;"> <div style="margin-bottom: 10px;">5 min</div> <div style="margin-bottom: 10px;">10 sec</div> <div>30 min</div> </div> </div>	50 CYCLE	76 PCS	0/1
4	High Temperature Storage	TEMP. : +100°C	1000 HRS	76 PCS	0/1
5	Low Temperature Storage	TEMP. : -55°C	1000 HRS	76 PCS	0/1
6	DC Operating Life	I _F = 20 mA	1000 HRS	76 PCS	0/1
7	High Temperature / High Humidity	85°C / 85% R.H.	1000 HRS	76 PCS	0/1



EVERLIGHT ELECTRONICS CO.,LTD.

DEVICE NUMBER : DLE-952-023 REV : 1.2

ECN : PAGE : 5/5

1.9mm Round Subminiature "Gull Wing" Lead (Square Base) LEDs

MODEL NO : 95-21VGC/TR7

Typical Electro-Optical Characteristic Curves

