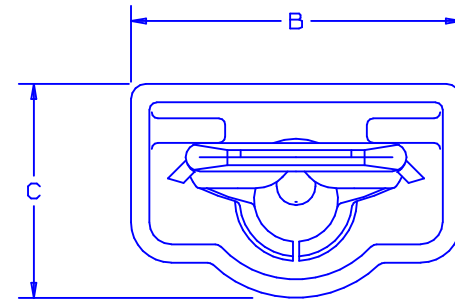
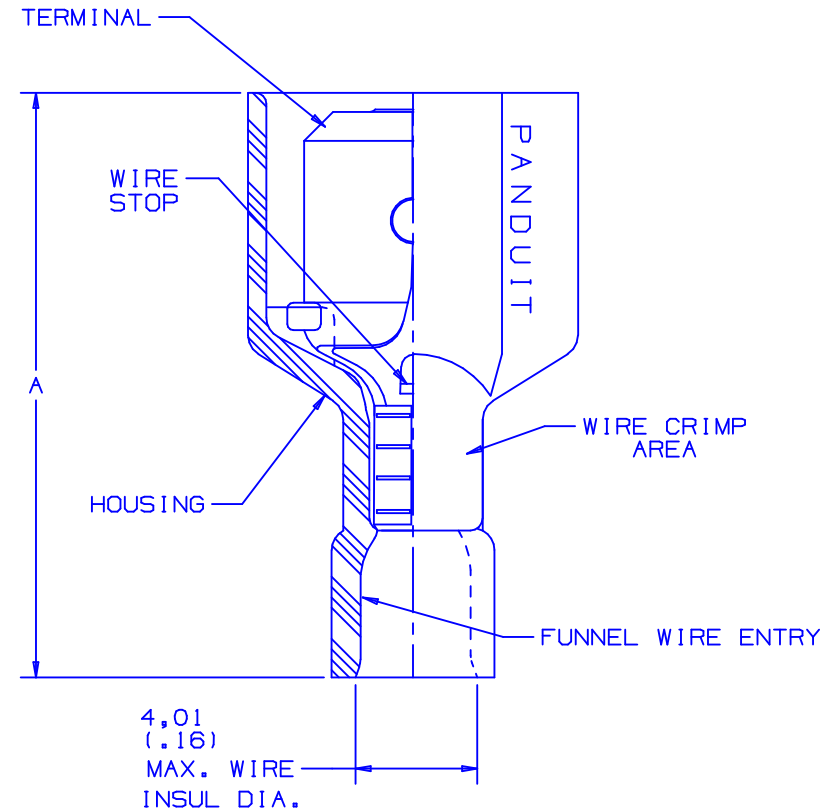


PART NUMBER		TAB SIZE	WIRE RANGE mm ²	DIMENSIONS mm		
PREFIX	PK			A ±,38	B ±,25	C ±,25
DMNF2-63F1M	-C -M	6,3 X 0,8 (.250 X .032)	1,5-2,5 (16-14)	22,9 (.90)	10,41 (.41)	7,05 (.28)




NOTES:

- USED FOR:
 - 600V MAX. VOLTAGE RATING.
 - 105° C (221°F) MAX. TEMP. RATING
 - STRANDED COPPER WIRE ONLY.
- PACKAGE QTY:
 - STD: C=100
 - BULK: M=1000
- MATERIAL:
 - STAMPING: CDA 260 BRASS, NICKEL PLATED
 - HOUSING: TYPE 6/6 NYLON TRANSLUCENT BLUE
- WIRE STRIP LENGTH: 7,1 ⁺⁸/₋₀ (9/32 ^{+1/32}/₋₀)
- DIMENSIONS IN BRACKETS ARE IN INCHES OR AWG.
- INSTALLATION TOOLS: REF. DWGS.
A41522, A41523, A41524, A41525



A41503_04

04	7/03	KLFU		ADDED INTERNAL SERRATIONS				 PANDUIT CORP. TINLEY PARK, ILLINOIS
03	10/97	TM	WJB	CHANGED DECIMAL POINTS TO COMMAS	06432	LA	DH	
02	1/97	TM	RLS	UPDATE DIMENSIONS, WAS TIN PLATED FILESPEC WAS NPC_A41503_01	05478	LA	DH	
01	1/92	BK	RLS	CHANGED COMMAS TO PERIODS #6 WAS A41511, #1C ADDED COPPER	00765	LA	KRS	
REV	DATE	BY	CHK	DESCRIPTION	ECN #	CUST	PM	DRAWN BY JMV CHK'D SCALE NONE DRAWING NO./CAD FILENAME A41503

1,5 - 2,5 mm²; 6,3 TAB
METRIC FULLY INSULATED MALE DISCONNECT

Mouser Electronics

Authorized Distributor

Click to View Pricing, Inventory, Delivery & Lifecycle Information:

Panduit:

[DMNF2-63FIM-L](#)