



556 Series

Class I, Div. 2

**Panel Mount Indicators
for 1" Mounting Hole
Watertight - NEMA4X IP66**



SPECIFICATIONS

- ▲ Available in white, red, yellow, green, blue, orange and cyan
- ▲ Voltage range of 12 to 125 VDC, 125 and 230 VAC
- ▲ Watertight seal from front of panel meets NEMA 4X IP66
- ▲ Maximum Mounting Torque - 40 in./lb.
- ▲ Housing material: Nickel plated brass
- ▲ Recognized component for use in Class I, Division 2, Groups A,B,C,D Hazardous Locations

FEATURES / BENEFITS

- ▲ Rated for use in Class I, Div. 2 hazardous locations
- ▲ Safety standards - UL and NEMA
- ▲ Tamperproof / Designed for high durability
- ▲ Long life, lasting up to 100k hours
- ▲ Uniform illumination - multi-LED construction
- ▲ Low profile flat lens or wide angle domed lens
- ▲ IP66 from front of panel

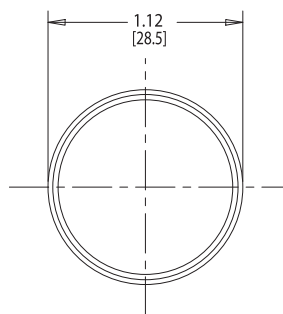
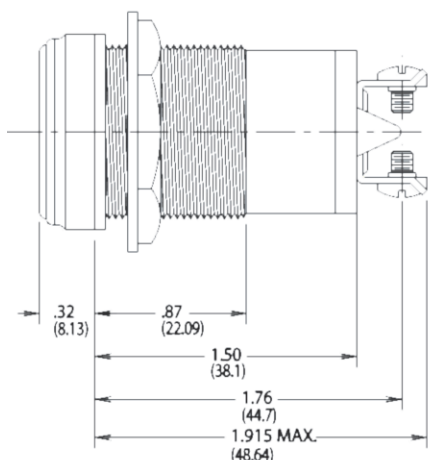
APPLICATIONS

The 556 Series LED Panel Mount Indicators incorporate both InGaN and AlInGaP technologies to offer maximum light output. This is a highly durable package, designed to withstand outdoor applications susceptible to rain, dust and sunlight. In addition, the Class I, Division 2 rating allows for use in hazardous environments common to the oil and gas, mining, and chemical industries.

- Instrument panels
- Safety applications
- UL 508 panel applications
- Agricultural controls
- Power Generators
- Environmental Monitoring Equipment
- Mining equipment
- Oil Refineries
- Transportation - rail, bus, airline
- Petrochemical applications
- Pump system controllers
- ...And Many More

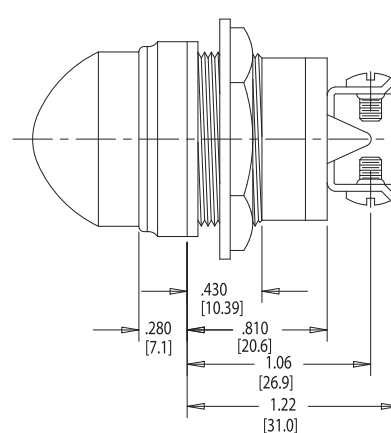
- ▲ UL recognized - File #E156890
- ▲ Front mounting in 1" clearance hole
- ▲ Operating temperature: -30°C to +85°C
- ▲ Storage temperature: -40°C to +100°C
- ▲ Lens material: Polycarbonate 94 -VO

FLAT LENS



Max. panel thickness:
Flat .600" Dome .187"

DOMED LENS



Polarity marking indicated on housing near positive supply terminal

Please see back of page for part numbers and additional specifications.





556 Series Class I, Div. 2 for 1" Mounting Hole Watertight - NEMA4X IP66

| Part Number | Lens Style* | Color | Voltage | Voltage Type | Current (mA) | Typical Intensity (fL) |
|---------------|-------------|--------|---------|--------------|--------------|------------------------|
| 556-1003-324F | Flat | White | 12 | VDC | 60 | 4000 |
| 556-1503-324F | Flat | Red | 12 | VDC | 95 | 3000 |
| 556-1603-324F | Flat | Green | 12 | VDC | 60 | 4000 |
| 556-1683-324F | Flat | Cyan | 12 | VDC | 60 | 4000 |
| 556-1703-324F | Flat | Yellow | 12 | VDC | 95 | 3000 |
| 556-1803-324F | Flat | Blue | 12 | VDC | 60 | 1200 |
| 556-1903-324F | Flat | Orange | 12 | VDC | 95 | 3000 |
| 556-1004-324F | Flat | White | 24 | VDC | 32 | 4000 |
| 556-1504-324F | Flat | Red | 24 | VDC | 46 | 3000 |
| 556-1604-324F | Flat | Green | 24 | VDC | 32 | 4000 |
| 556-1684-324F | Flat | Cyan | 24 | VDC | 32 | 4000 |
| 556-1704-324F | Flat | Yellow | 24 | VDC | 46 | 3000 |
| 556-1804-324F | Flat | Blue | 24 | VDC | 32 | 1200 |
| 556-1904-324F | Flat | Orange | 24 | VDC | 46 | 1200 |
| 556-1508-324F | Flat | Red | 37.5 | VDC | 20 | 2600 |
| 556-1608-324F | Flat | Green | 37.5 | VDC | 16 | 4000 |
| 556-1708-324F | Flat | Yellow | 37.5 | VDC | 20 | 2600 |
| 556-1506-324F | Flat | Red | 72 | VDC | 18.5 | 1800 |
| 556-1606-324F | Flat | Green | 72 | VDC | 16 | 1800 |
| 556-1706-324F | Flat | Yellow | 72 | VDC | 20 | 1000 |
| 556-1806-324F | Flat | Blue | 72 | VDC | 16 | 1200 |
| 556-1507-324F | Flat | Red | 125 | VDC | 10 | 700 |
| 556-1607-324F | Flat | Green | 125 | VDC | 10 | 1000 |
| 556-1707-324F | Flat | Yellow | 125 | VDC | 10 | 7000 |
| 556-1005-324F | Flat | White | 125 | VAC | 9 | 1800 |
| 556-1505-324F | Flat | Red | 125 | VAC | 10.5 | 1200 |
| 556-1605-324F | Flat | Green | 125 | VAC | 9.5 | 1800 |
| 556-1685-324F | Flat | Cyan | 125 | VAC | 9.5 | 1800 |
| 556-1705-324F | Flat | Yellow | 125 | VAC | 10.5 | 1200 |
| 556-1805-324F | Flat | Blue | 125 | VAC | 9.5 | 500 |
| 556-1905-324F | Flat | Orange | 125 | VAC | 10.5 | 500 |
| 556-1009-324F | Flat | White | 230 | VAC | 7 | 1800 |
| 556-1509-324F | Flat | Red | 230 | VAC | 7 | 1200 |
| 556-1609-324F | Flat | Green | 230 | VAC | 7 | 1800 |
| 556-1709-324F | Flat | Yellow | 230 | VAC | 7 | 1200 |
| 556-1809-324F | Flat | Blue | 230 | VAC | 7 | 500 |
| 556-1909-324F | Flat | Orange | 230 | VAC | 7 | 1800 |

*For domed lens style: replace 4th digit with "3" for example 556-3503-324F

Other voltages are available. Please contact our factory for more information.



Dialight reserves the right to make changes at any time in order to supply the best product possible.

The most current version of this document will always be available at:

www.dialight.com/Assets/Brochures_And_Catalogs/Indication/MDEL556CID2.pdf

MDEL556CID2_A