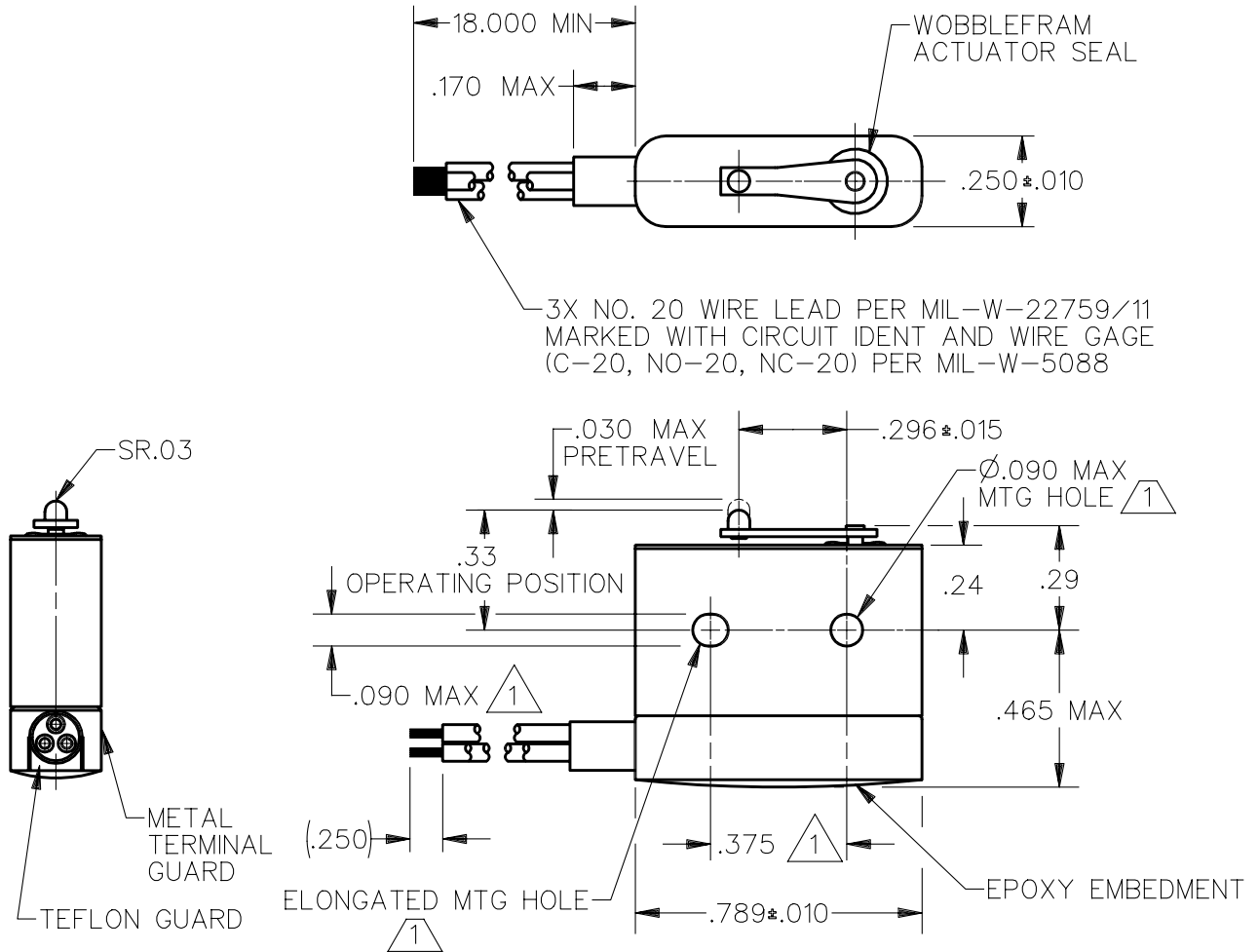


CATALOG LISTING  
12HM12-2  
PAGE 1 OF 1  
RELEASE NO. PR-22432  
REPLACES  
ISSUE  
**M**  
2  
CHECK  
REVISIONS  
A C094220  
DLT  
24 MAR 99  
CHECK  
DDM/CAD  
DRAWN  
K D R 13 NOV 96  
CHECK

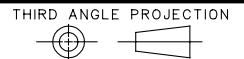



NOTES

- 1 MOUNTING HOLES WILL ACCEPT PINS OR SCREWS OF Ø .087 MAX ON .375 ± .002 CENTERS
- 2 - FOR USE IN TEMPERATURE RANGE -85°F TO +250°F (DOWN TO -300°F IF WIRE LEADS ARE NOT FLEXED)
- 3 - HERMETICALLY SEALED (METAL-TO-METAL, GLASS-TO-METAL)
- 4 - ALL EXPOSED PARTS ARE OF CORROSION RESISTANT MATERIALS
- 5 WEIGHT OF SWITCH ONLY IS 0.22 OZ MAX. WEIGHT OF CONDUCTOR GROUP ONLY IS 0.09 OZ MAX PER FOOT
- 6 - DO NOT APPLY MORE THAN 1 1/2 INCH LBS OF TORQUE WHEN TIGHTENING MOUNTING SCREWS

ANSI Y14.5M-1982 APPLIES

THIS DRAWING COVERS A PROPRIETARY ITEM AND IS THE PROPERTY OF MICRO SWITCH, A DIVISION OF HONEYWELL. THIS DRAWING IS NOT TO BE COPIED OR USED WITHOUT THE APPROVAL OF MICRO SWITCH.



CHARACTERISTICS		ELECTRICAL DATA			SCALE 2 : 1	DO NOT SCALE PRINT
OPERATING FORCE — — — — 7 OZ MAX		CONTACT ARRANGEMENT S P D T			UNLESS OTHERWISE SPECIFIED TOLERANCES ARE	
RELEASE FORCE — — — — 1 OZ MIN						
DIFFERENTIAL TRAVEL — — — .006 MAX		LINE VOLTAGE	INDUCTIVE LOAD	RESISTIVE LOAD	ONE PLACE ( .0 )	± .030
OVERTRAVEL — — — — .003 MIN					28 VDC	1 AMP
					THREE PLACE ( .000 )	± .005
		115 VAC (400 CYCLE)	1 AMP	3 AMP	ANGLES	±
					WEIGHT	

# Mouser Electronics

Authorized Distributor

Click to View Pricing, Inventory, Delivery & Lifecycle Information:

[Honeywell:](#)

[12HM12-2](#)