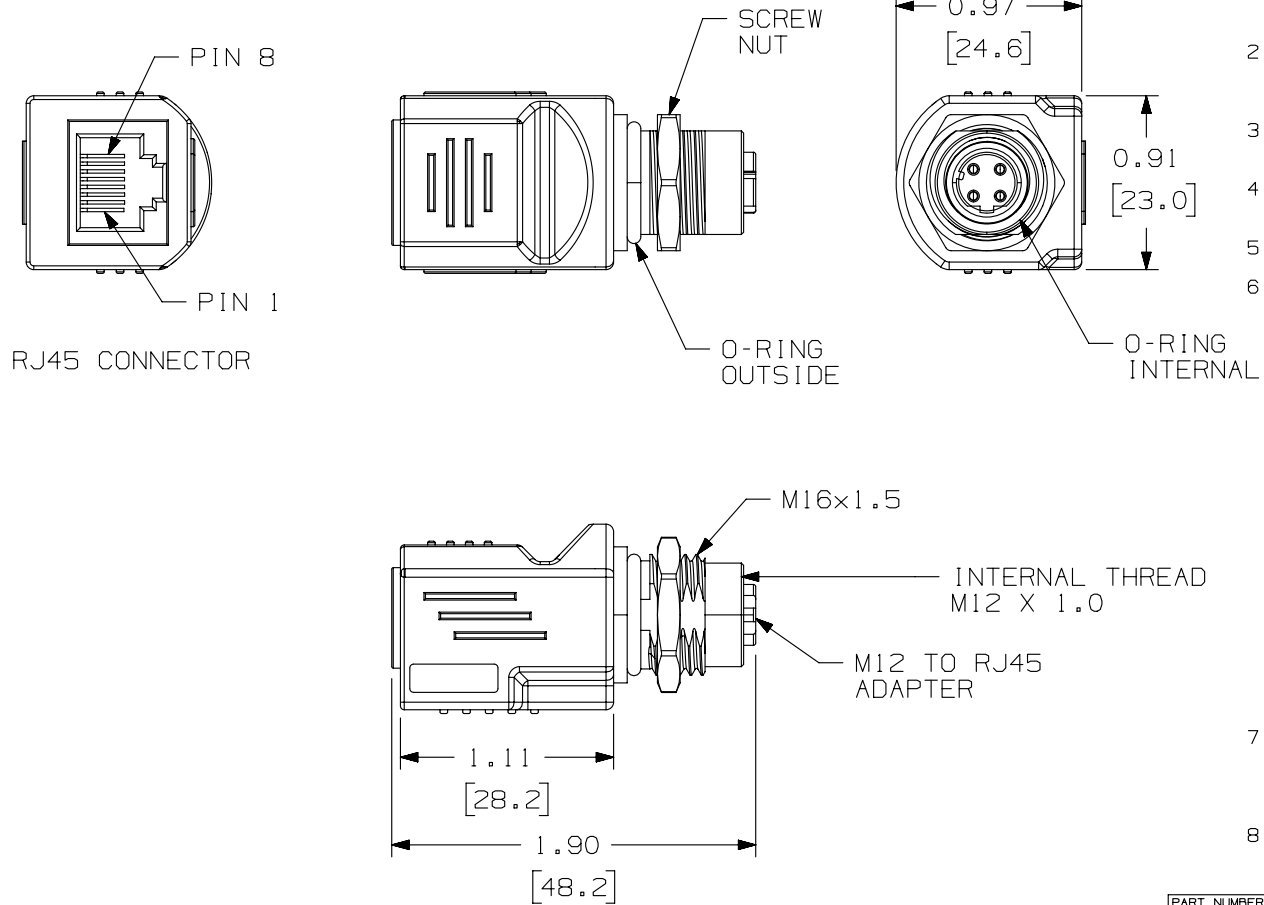

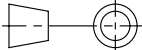


THIS COPY IS PROVIDED ON A RESTRICTED BASIS AND IS NOT TO BE USED IN ANY WAY DETRIMENTAL TO THE INTERESTS OF PANDUIT CORP.

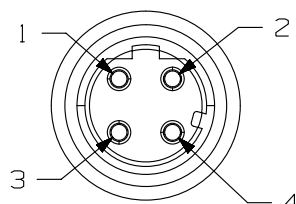
**NOTES:**

- CONSTRUCTED TO MEET THE FOLLOWING STANDARDS:
 - FEMALE M12 D-CODE END: IEC 61076-2-101
 - M12 TO RJ45: ANSI/TIA-568-C.2
- THE TRANSMISSION PERFORMANCE IS 10/100MBIT ETHERNET ACCORDING TO IEEE 802.3
 - THE PRODUCT WAS TESTED ACCORDING TO ANSI/TIA-568-C.2 PERMANENT LINK, CATEGORY 5E
- MEETS THE FOLLOWING CATEGORIES:
 - CATEGORY 5/CLASS D PER ISO/IEC 11801 DIN 50173-1
 - CATEGORY 5E PER ANSI/TIA/EIA-568-C.2
- ELECTRICAL:
 - WORKING VOLTAGE: 50V
 - WORKING CURRENT: 1A
- MECHANICAL:
 - PANEL THICKNESS: 0.197" [5.0MM] MAXIMUM
- CONSTRUCTION:
 - ALL MATERIALS AND COMPONENTS USED MUST MEET THE MATERIAL RESTRICTIONS OF RoHS, (EUROPEAN DIRECTIVE 2011/65/EU ON THE RESTRICTION OF HAZARDOUS SUBSTANCES) AS PROPOSED BY THE RoHS TECHNICAL ADAPTATION COMMITTEE.
 - COMPONENT MATERIALS:
 - CONNECTOR HOUSING: NYLON/GF BLACK
 - PCB: FR4, 0.8t
 - JACK: PBT, BLACK
 - O-RING OUTSIDE: VITON BLACK
 - O-RING INSIDE: VITON GREEN
 - NUT (ZN) ALLOY, (NI) PLATED
 - SHIELD CONTACT: (CU) ALLOY PLATED WITH (NI)
 - CONTACTS (M12): (CU) ALLOY
 - CONTACTS (RJ45): PHOSPHOR BRONZE
 - CONTACT FINISH (M12): (AU) OVER (NI) PLATED
 - CONTACT FINISH (RJ45): (AU) ON CONTACT AREA PLATED, (SN) PLATED OVER (NI) ON SOLDER AREA PLATED
- ENVIRONMENTAL:
 - OPERATING TEMPERATURE: -13°F-+176°C (-25°C-+80°C)
 - STORAGE TEMPERATURE: -40°F-+176°F (-40°C-+80°C)
 - INGRESS PROTECTION RATING (IP): IP65 (PLASTIC MOLDING/IP68 (M12)
- 0.78 LBS/10 PCS (357.00g/10 PCS)

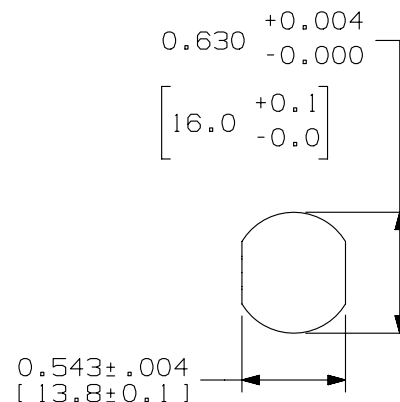
PART NUMBER 1CAM12DRJS		PRODUCT SPEC/PKG SPEC N/A	
I.I. NUMBER N/A		WORK INSTRUCTION N/A	
TITLE FEMALE M12, D-CODE, 4 POSITION TO FEMALE RJ45 CATEGORY 5 SHIELDED ADAPTER			
CUSTOMER DRAWING			
ITEM REVISION NAME 13M438AJ/00			
DATASET FILE NAME 13M438AJ_DC02/00A			
UNLESS OTHERWISE SPECIFIED, DIMENSIONAL TOLERANCES ARE: IN [mm] .x ± .1 [2.54] .xxx ± .005 [.127] .xx ± .01 [.25] ANGLES ± 5 °		MATERIAL:	
		DRAWING NUMBER: 13M438AJ - 02	
DRAWN BY BJN	DATE 1-24-14	CHK DCS	SCALE 1-24-14
SHT 1 OF 2			SIZE A

R	1-24-14	BJN	DCS	GAZ	RELEASED TO PRODUCTION	13M438AJ-02
REV	DATE	BY	CHK	APR	DESCRIPTION	ECN

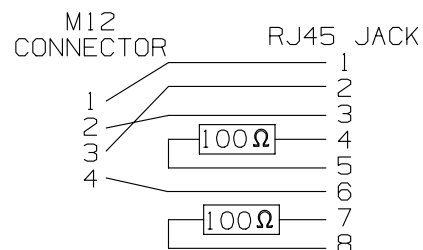
THIS COPY IS PROVIDED ON A RESTRICTED BASIS AND IS NOT TO BE USED IN ANY WAY DETRIMENTAL TO THE INTERESTS OF PANDUIT CORP.



PIN ASSIGNMENTS
FRONT VIEW



M12 RECOMMENDED
PANEL CUT-OUT



ADAPTOR SHIELDED
M12 D CODE TO RJ45

PART NUMBER 1CAM12DRJS		PRODUCT SPEC/PKG SPEC N/A			
I.I. NUMBER N/A		WORK INSTRUCTION N/A			
TITLE FEMALE M12, D-CODE, 4 POSITION TO FEMALE RJ45 CATEGORY 5E SHIELDED ADAPTER CUSTOMER DRAWING					
ITEM REVISION NAME 13M438AJ/00		PANDUIT			
DATASET FILE NAME 13M438AJ_DC02/00A					
UNLESS OTHERWISE SPECIFIED, DIMENSIONAL TOLERANCES ARE: IN [mm] .x ± .1 [2.54] .xxx ± .005 [.127] .xx ± .01 [.25] ANGLES ± 5 °		MATERIAL:			
THIRD ANGLE PROJECTION		DRAWING NUMBER: 13M438AJ-02			
DRAWN BY BJN	DATE 1-24-14	CHK DCS	SCALE FULL	SHT 2 OF 2	SIZE A