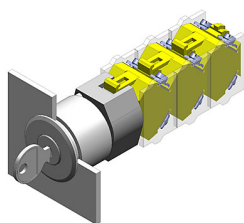


# EAO – Your Expert Partner for Human Machine Interfaces

## 704.121.018 - Keylock switch actuator 2 positions

### 704.121.018 - Keylock switch actuator 2 positions



*Attention: The preview is based on a sample product. This can differ from your current configuration.*

#### Mounting

Mounting cut-out	Ø 30.5 mm
Design	flush

#### Front

Front shape	round
Front dimension	Ø 35 mm
Front ring material	Aluminium
Front ring colour	natural anodized

#### Other Attributes

Weight	0.099 kg
--------	----------

#### Operating-/Indication part

Switching angle	C = 90°
-----------------	---------

#### IP-Rating

Front protection	IP 65
------------------	-------

#### Actuator

Key remove	A
Switching action	Rest - Maintained

#### Switching element

Rotary positions	2
------------------	---

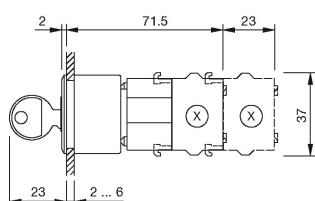
#### Function

Keylock switch	
----------------	--

# EAO – Your Expert Partner for Human Machine Interfaces

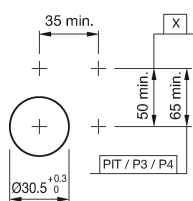
## 704.121.018 - Keylock switch actuator 2 positions

### Dimensions



X = Screw terminal

### Mounting cut-outs

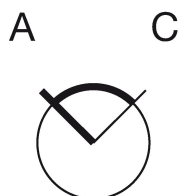


PIT = Push-in terminal

### Wiring diagram



### Switching positions



### Additional information

The standard lock Ronis 251

Two keys are supplied with each key lock switch

Further lock numbers see «Technical data»

Max. 3 switching elements can be clipped on

The colour of anodized aluminium parts can vary due to technical production reasons

### Legend

Switching action: A = Rest, C = Maintained