

# SPECIFICATIONS

**Material:** Boot: Neoprene.

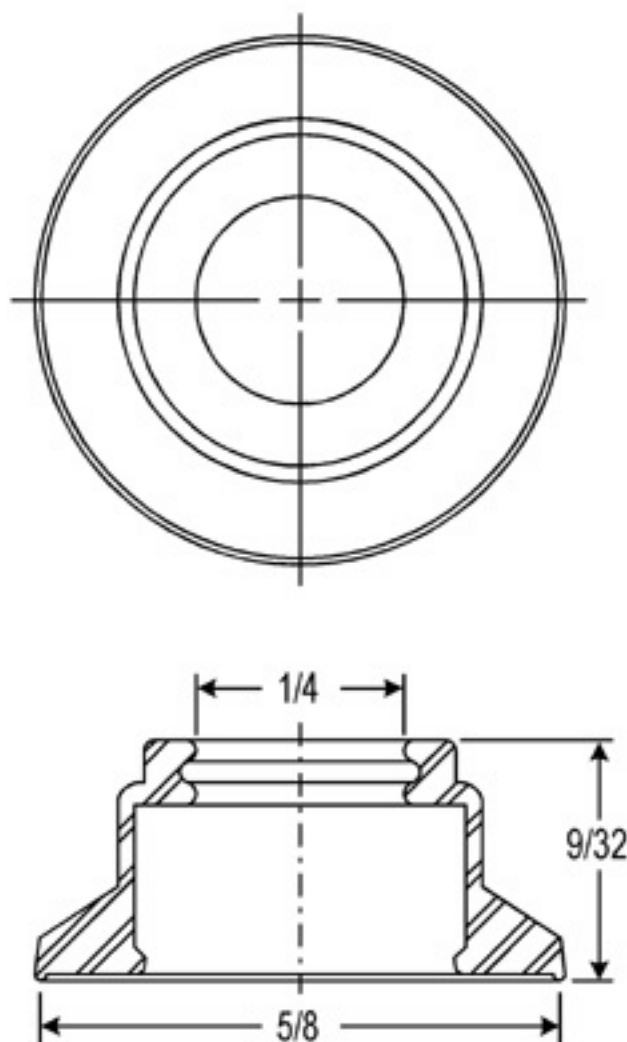
**Color** black (other materials and colors available on special order.)

**Temperature Range:** -65°F to +300°F

**Shelf Life:** 2 years.

**Installation:** A. Mount the switch using SNAPSEEL® shouldered mounting nut.

B. Press SNAPSEEL® over switch actuator and snap over nut.



NOTE: MOUNTING NUT NOT INCLUDED - PURCHASE SEPARATELY IF NEEDED.

A		CAD COMPUTER GENERATED		9/23/02	
REV.		DESCRIPTION		DATE	
MAXIMUM AND MINIMUM MEASUREMENTS ARE STATED DIRECTLY ON EACH DIMENSION.		TITLE:		ENG.	
MAT'L: NEOPRENE		SNAPSEEL® FOR SUBMINIATURE ROTARY SHAFT (1312/7)		DWN. M.M.	
FINISH: BLACK		APM-HEXSEAL CORPORATION		CHKD.	
				SCALE 4:1	
				DWG. NO. 1312/7	

THIS DRAWING COVERS PROPRIETARY ITEM AND IS THE PROPERTY OF THE APM-HEXSEAL CORPORATION.  
THIS DRAWING IS NOT TO BE COPIED OR USED WITHOUT THE WRITTEN APPROVAL OF AN OFFICER OF THE APM-HEXSEAL CORPORATION.

# Mouser Electronics

Authorized Distributor

Click to View Pricing, Inventory, Delivery & Lifecycle Information:

[APM HEXSEAL:](#)

[1312/7](#)