

MICRO SWITCH

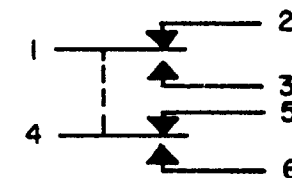
FREEPORT, ILLINOIS, U.S.A.
A DIVISION OF HONEYWELL

FED. MFG. CODE 91929

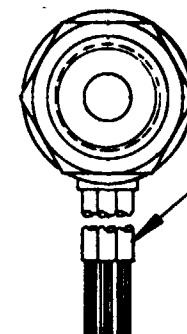
SWITCH-ENCLOSED

CATALOG LISTING
402EN344-6

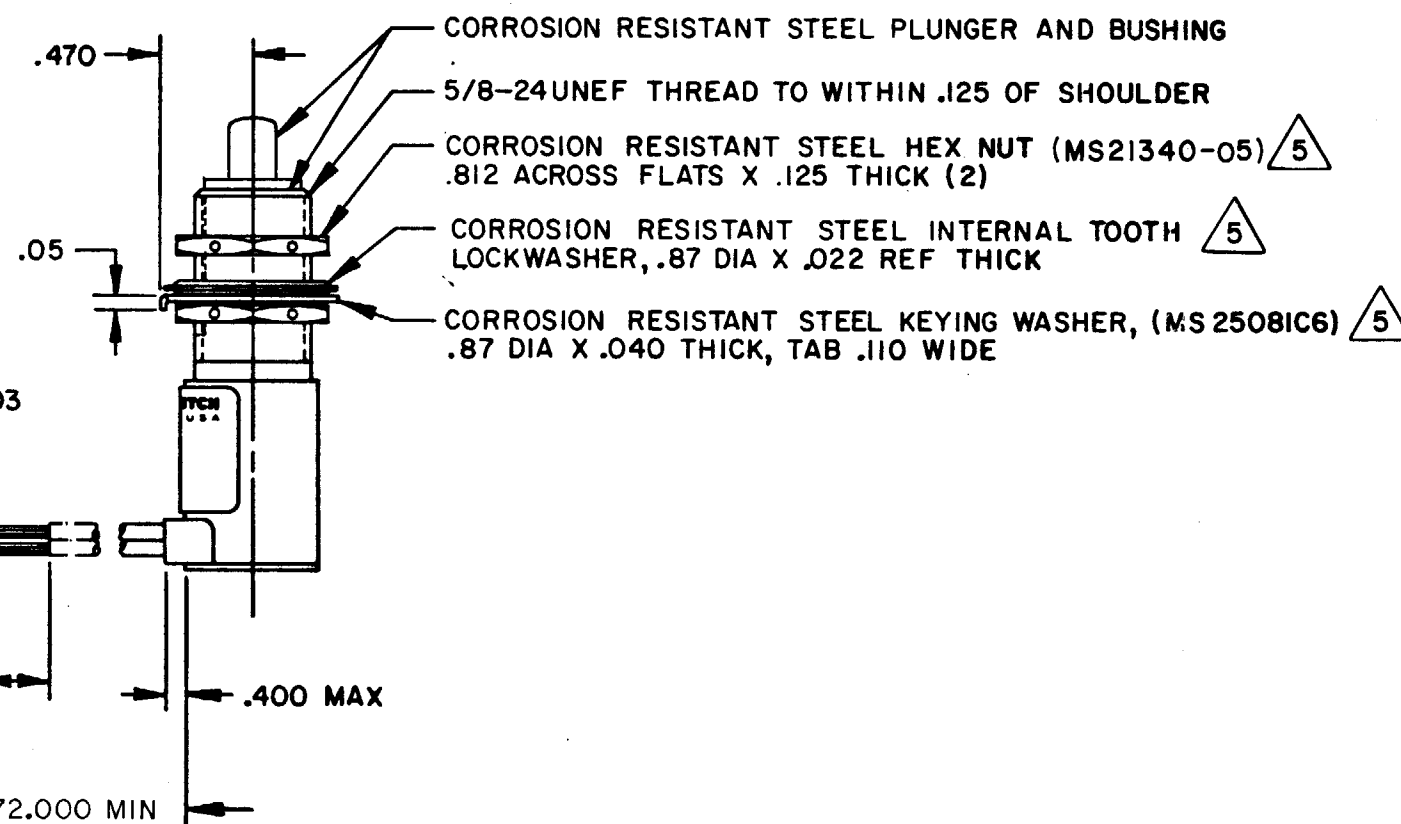
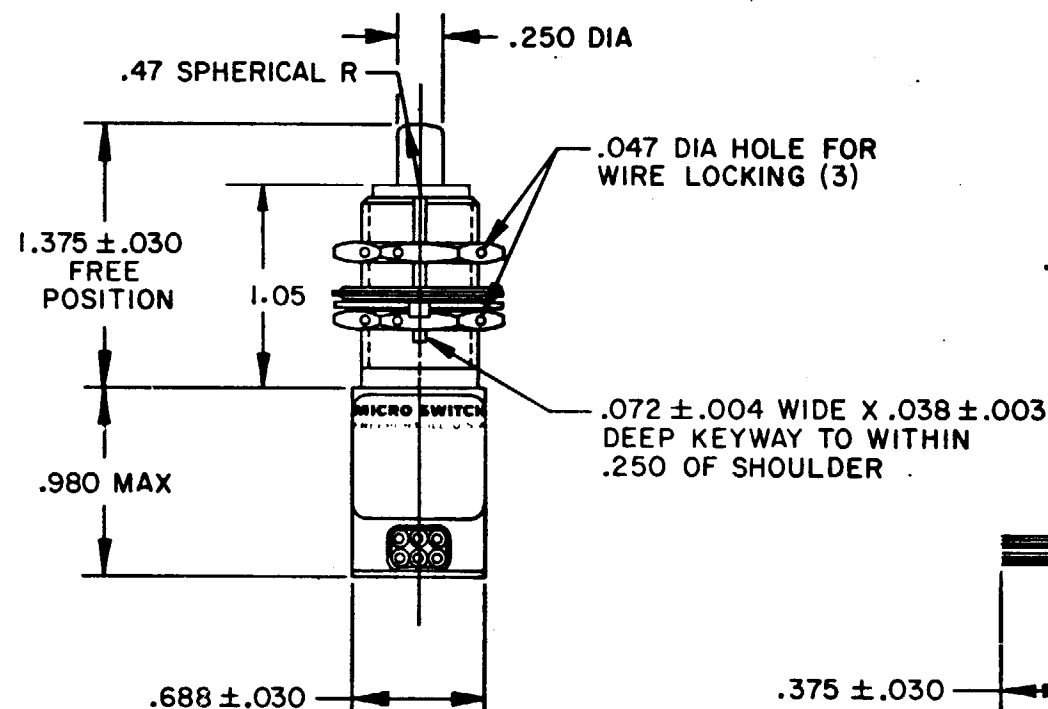
CUSTOMER PART NUMBER
1B97446-1 (REV)



CIRCUIT DIAGRAM



(6) NO. 20 WIRE LEAD PER MIL-W-22759/7
MARKED WITH CIRCUIT IDENTIFICATION
AND WIRE GAGE (1-20, 2-20, ETC) PER
MIL-W-5088



NOTES

- 1 - CORROSION RESISTANT STEEL ENCLOSURE
- 2 - SWITCH SEALED PER MIL-S-8805 SYMBOL 4
- 3 - CIRCUIT DIAGRAM, CAT. LIST., AND CUSTOMER PART NUMBER, WITH REVISION LETTER ARE SHOWN ON NAMEPLATE. INK STAMP SERIAL NUMBER TO THE RIGHT OF NAMEPLATE
- 4 - COINCIDENCE OF OPERATING AND RELEASING POINTS: .010 OF PLUNGER TRAVEL
- 5 - HARDWARE MAY BE PACKAGED UNASSEMBLED PER MIL-S-8805

402EN344-6

M

DRAWING
NUMBER

ISSUE

REVISIONS

CHECK

REVISIONS

CHECK

REVISIONS

CHECK

REVISIONS

CHECK

REVISIONS

CHECK

REVISIONS

CHECK

REVISIONS

THIS DRAWING COVERS A PROPRIETARY ITEM AND IS THE PROPERTY OF MICRO SWITCH, A DIVISION OF HONEYWELL. THIS DRAWING IS NOT TO BE COPIED OR USED WITHOUT THE APPROVAL OF MICRO SWITCH.

CHARACTERISTICS	ELECTRICAL DATA
OPERATING FORCE ----- 6-12 LB	CONTACT ARRANGEMENT S P D T (2)
FULL OVERTRAVEL FORCE --- 30 LBS MAX	28 VDC
RELEASE FORCE ----- 4 LBS MIN	LOAD
PRETRAVEL ----- .040 MAX	SEA LEVEL
DIFFERENTIAL TRAVEL ----- .020 MAX	50,000 FT.
OVERTRAVEL ----- .200 MIN	RES
	IND
	MOTOR

SCALE	FULL
DO NOT SCALE PRINT	
TOLERANCES	
APPLY TO DESIGN UNITS. CONVERSIONS ARE ONLY FOR REFERENCE. UNLESS NOTED, TOLERANCES ARE:	
NO PLACES	1/16
ONE PLACE	1/32
TWO PLACES	1/64
THREE PLACES	1/128
ANGLES	1/16
DESIGN UNITS	SI METRIC
	U.S. CUSTOMARY
THIRD ANGLE PROJECTION	
WEIGHT	7.2 OZ MAX

Mouser Electronics

Authorized Distributor

Click to View Pricing, Inventory, Delivery & Lifecycle Information:

[Honeywell:](#)

[402EN344-6](#)