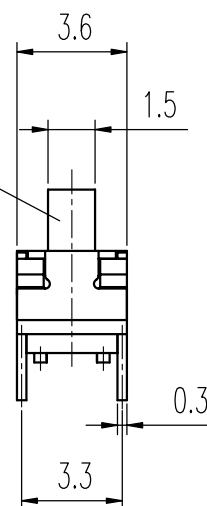
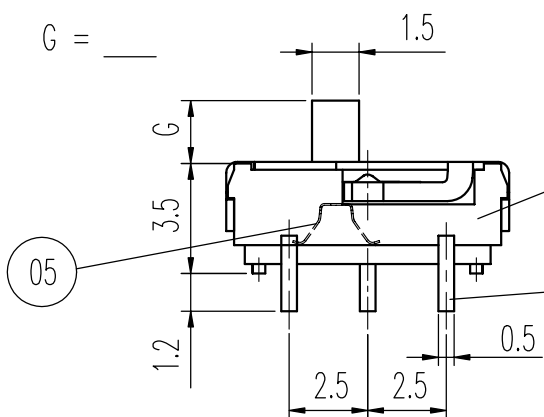


01

02

03

04



1P - 2T

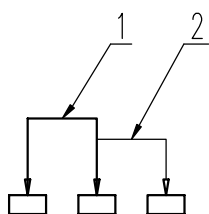
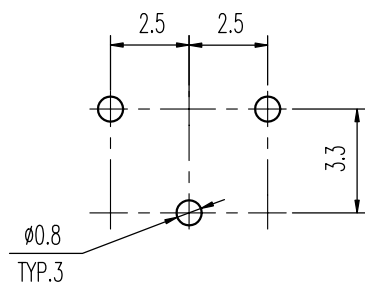


示意图 SCHEMATIC



安装孔 PIERCING PLAN

### 规格 Specifications

额定负荷 Ratings	DC 6 V 0.3 A
初期接触电阻 Initial Contact Resistance	70 mΩ Max.
绝缘电阻 Insulation Resistance	DC 500 V 60 Sec. 100 MΩ Min.
抗电强度 Dielectric Voltage	AC 500 V (50~60HZ) 60 Sec.

操作力 Operating Force	A → B
	200±100gf
负荷寿命 Operating Life With Load	10,000 次 Cycles

05	接触片 CONTACT	C5210R	1	Ag CLAD				
04	端子 TERMINAL	C2680R	3	Ag PLATED				
03	胶壳 HOUSING	PA	1	BLACK C				
02	胶柄 KNOB	PA	1	G = 2, 4				
01	盖片 COVER	SUS	1	NATURAL	标号 REV	内容 DESCRIPTION	签名 SIGN.	日期 DATE
序 NO.	零件 PART	材料 MATERIAL	数量 QTY	备注 REMARKS	DWG NO. ITEM3043			

TOLERANCES UNLESS OTHERWISE SPEC.		TITLE	SLIDE SWITCH		ITEM NO	SS-12D1505-G		
UNDER 1	± 0.10	DRAWN	张渠江	2009-3-2	VERSION	A01	PAGE 1	OF 1
1 - 10	± 0.30	REVIEWED	王光云	2009-3-2	SCALE		UNIT	mm
OVER 10	± 0.50	APPROVED	马建和	2009-3-2	PROJECTION			

**COMAX** 高铭电子(惠州)有限公司  
Comax Electronics(Huizhou)Co.,Ltd.

# Mouser Electronics

Authorized Distributor

Click to View Pricing, Inventory, Delivery & Lifecycle Information:

[C&K Components:](#)

[SS-12D1505-G 2](#)