

IPT1-1XX-XX-XX-D-XXX

No OF POS PER ROW
-02 THRU -25

LEAD STYLE
SEE TABLE 1, SHEET 2

OPTION

-POL: POSITION #1 REMOVED
(USE IPT1-XX-D-P)
-FL: FRICTION LOCK (POS -05 THRU -25)
(USE IPT1-XX-D-FL-X & T-1S64-XX-X)

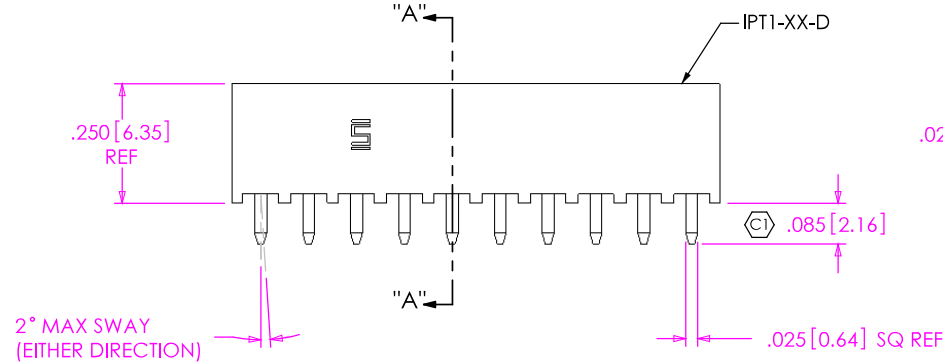
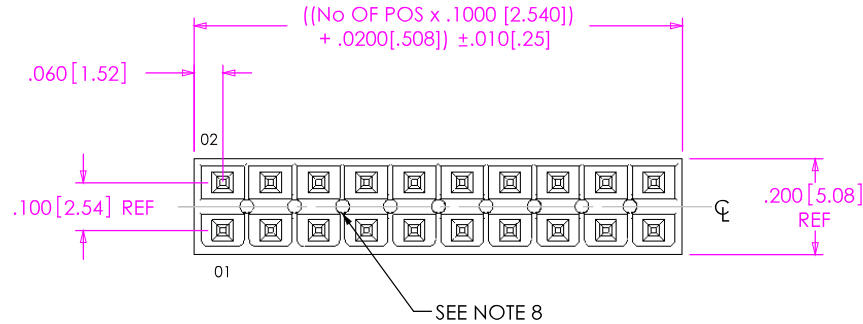
ROW SPECIFICATION

-D: DOUBLE (USE IPT1-XX-D-XX-X)

PLATING SPECIFICATION

-S: SELECTIVE GOLD
(USE T-1S6-XX-S-2)
-SM: SELECTIVE GOLD, MATTE
TIN TAIL. (USE T-1S6-XX-S-2)

DO NOT
SCALE FROM
THIS PRINT



SEE TABLE 1

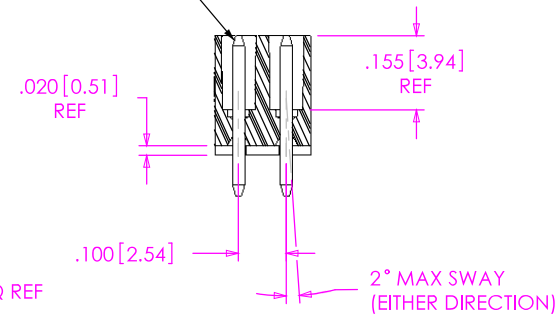
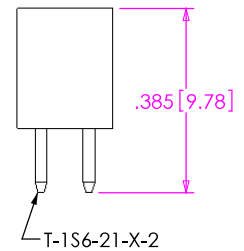


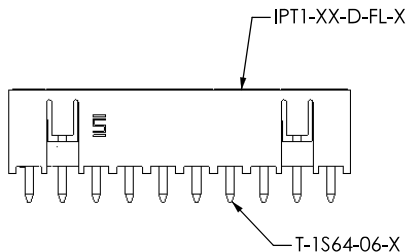
FIG.1
IPT1-110-01-XX-D-XXX SHOWN

NOTES:

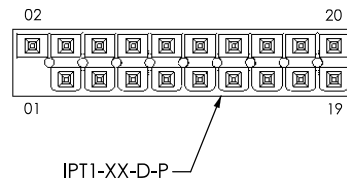
1. \odot REPRESENTS A CRITICAL DIMENSION.
2. MAXIMUM ALLOWABLE CUT FLASH: .010 [.25].
3. MINIMUM TERMINAL PUSH OUT FORCE: 2 lbs.
4. MAXIMUM VARIATION BETWEEN PIN ROWS: .005 [.13].
5. "END WALLS" AFTER CUTTING SHOULD BE .015+/- .003 [.38+/- .08].
6. PARTS TO BE BULK PACKAGED.
7. ALL DIMENSIONS TO BE ABOUT CENTERLINE WITHIN +/- .005 [.13].
8. PRESENCE OF VOIDS IS OPTIONAL AND PATTERN TO WHICH THEY OCCUR IS VARIABLE.
- 9 -T PLATING OPTION AVAILABLE FOR EXISTING CUSTOMERS ONLY.

IN-PROCESS
FOR -01 LEADSTYLE

-FL: FRICTION LOCK OPTION
IPT1-110-01-X-D-FL SHOWN



-POL: POLARIZED OPTION
IPT1-110-01-X-D-POL SHOWN



UNLESS OTHERWISE SPECIFIED,
DIMENSIONS ARE IN INCHES.

TOLERANCES ARE:

DECIMALS

.XX: $\pm .01$ [.3]

.XXX: $\pm .005$ [.13]

.XXXX: $\pm .0020$ [.051]

ANGLES

$\pm 2^\circ$

PROPRIETARY NOTE

THIS DOCUMENT CONTAINS INFORMATION
CONFIDENTIAL AND PROPRIETARY TO
SAMTEC, INC. AND SHALL NOT BE REPRODUCED
OR TRANSFERRED TO OTHER DOCUMENTS OR
DISCLOSED TO OTHERS OR USED FOR ANY
PURPOSE OTHER THAN THAT WHICH IT WAS
OBTAINED WITHOUT THE EXPRESSED WRITTEN
CONSENT OF SAMTEC, INC.

MATERIAL:

DO NOT SCALE DRAWING
INSULATOR: VECTRA E130I, COLOR: BLACK
CONTACT: PHOS BRONZE, 510, 3/4 HARD

SHEET SCALE: 1:0.4

samtec

520 PARK EAST BLVD, NEW ALBANY, IN 47150
PHONE: 812-944-6733 FAX: 812-948-5047
e-Mail: info@SAMTEC.com code: 55322

DESCRIPTION:

.100 DOUBLE ROW SHROUDED TERMINAL ASSEMBLY

DWG. NO.

IPT1-1XX-XX-XX-D-XXX

BY: DEAN P

11-05-2002

SHEET 1 OF 2

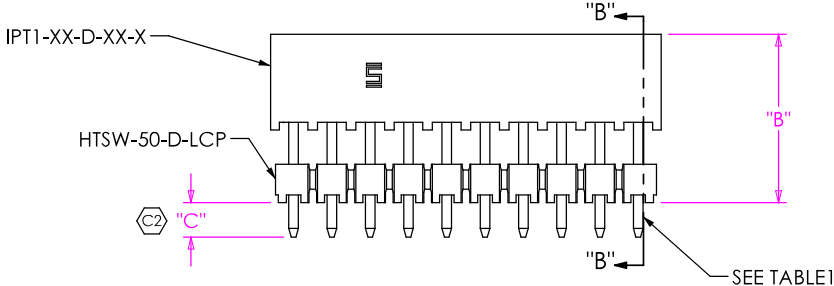
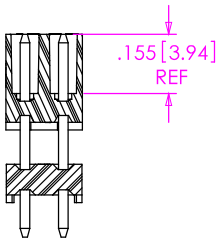


FIG. 2
IPT1-110-02-XX-D-XXX SHOWN



SECTION "B"-"B"

TABLE 1		BOARD STACK HEIGHT WHEN MATED WITH IPS1	TERMINAL	"C"
LEADSTYLE	"B"			
-01	N/A	N/A	T-1S6-21-X-2	
-02	.366[9.30]	.551[14.00]	T-1S6-26-X-2	.104[2.64]
-03	.445[11.30]	.630[16.00]	T-1S6-08-X-2	.085[2.16]
-04	.484[12.30]	.669[17.00]	T-1S6-24-X-2	.106[2.69]
-05	.563[14.30]	.748[19.00]	T-1S6-27-X-2	.097[2.46]
-06	.602[15.30]	.787[20.00]	T-1S6-23-X-2	.093[2.35]
-07	.799[20.30]	.984[25.00]	T-1S6-28-X-2	.091[2.31]
-08	.996[25.30]	1.181[30.00]	T-1S6-29-X-2	.094[2.39]
-09	1.193[30.30]	1.378[35.00]	T-1S6-30-X-2	.097[2.46]

F:\DWG\MISC\MKTG\IPT1-1XX-XX-XX-D-XXX-MKT.SLDDRW

PROPRIETARY NOTE
THIS DOCUMENT CONTAINS INFORMATION
CONFIDENTIAL AND PROPRIETARY TO
SAMTEC, INC. AND SHALL NOT BE REPRODUCED
OR TRANSFERRED TO OTHER DOCUMENTS OR
DISCLOSED TO OTHERS OR USED FOR ANY
PURPOSE OTHER THAN THAT WHICH IT WAS
OBTAINED WITHOUT THE EXPRESSED WRITTEN
CONSENT OF SAMTEC, INC.

DO NOT SCALE DRAWING

SHEET SCALE: 2:1

520 PARK EAST BLVD, NEW ALBANY, IN 47150
PHONE: 812-944-6733 FAX: 812-948-5047
e-Mail: info@SAMTEC.com code: 55322

DESCRIPTION:
.100 DOUBLE ROW SHROUDED TERMINAL ASSEMBLY

DWG. NO. **IPT1-1XX-XX-XX-D-XXX**

BY: DEAN P 11-05-2002 SHEET 2 OF 2