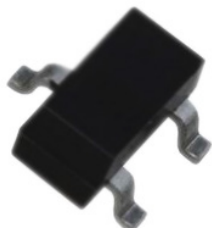
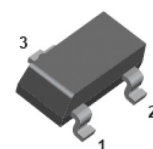
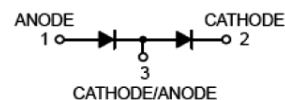


Surface Mount Switching Diode



Features:

- Lead-free.
- Fast switching speed.
- High conductance.
- Surface mount package ideally suited for automatic insertion.
- For general purpose switching applications.



SOT-23

Applications:

High speed switching application.

Max. Rating @ T_A = 25°C unless otherwise specified

Parameter	Symbol	Value	Unit
Repetitive Peak Reverse Voltage	V _{RRM}	250	V
Working Peak Reverse Voltage DC Reverse Voltage	V _{RWM} V _R	200	
RSM Reverse Voltage	V _{R(RMS)}	141	
Forward Continuous Current(Max.)	I _{FM}	400	mA
Peak Forward Surge Current @t = 1μs @t = 1ms @t = 1s	I _{FSM}	9 3 1.7	A
Repetitive Peak Forward Surge Current	I _{FRM}	625	mA
Power Dissipation	P _D	350	mW
Thermal Resistance Junction To Ambient Air	R _{θJA}	357	°C/W
Operating Junction Temperature Range	T _j	150	°C
Storage Temperature Range	T _{STG}	-65 to +150	°C

Electrical Characteristics @ T_A = 25°C unless otherwise specified

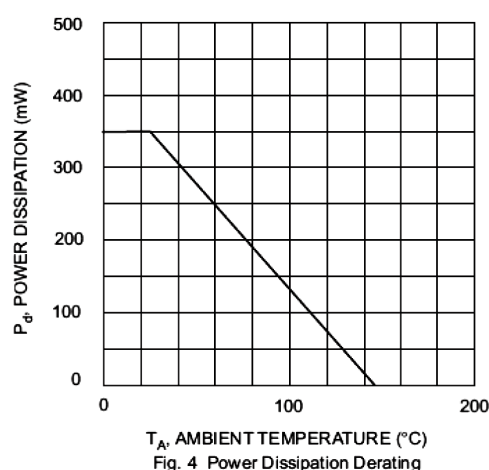
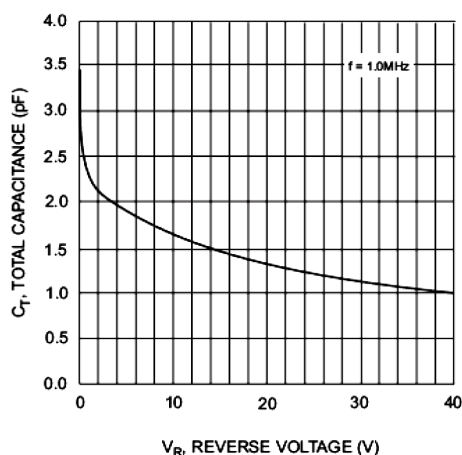
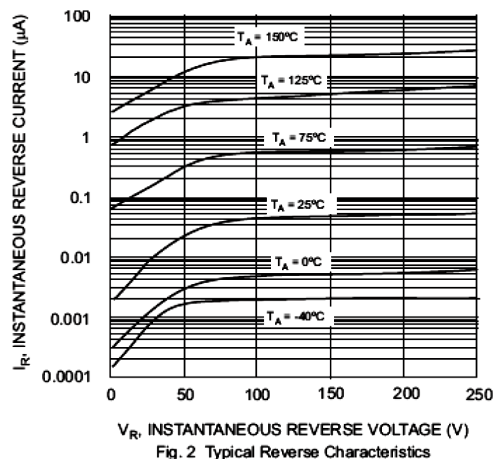
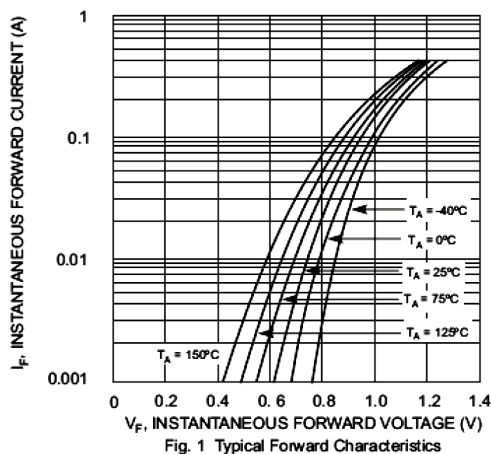
Characteristic	Symbol	Min.	Max.	Unit	Test Condition
Reverse breakdown Voltage	V _{(BR)R}	250	-	V	I _R = 100μA
Reverse Leakage Current	I _R	-	100	nA	V _R = 200V
Forward voltage	V _F	-	1 1.25	V	I _F = 100mA I _F = 200mA
Total Capacitance	C _T	-	5.0	pF	V _R = 0V, f = 1MHz
Reverse Recovery Time	t _{rr}	-	50	ns	I _F = I _R = 30mA I _{rr} = 0.1×I _R R _L = 100Ω

www.element14.com
www.farnell.com
www.newark.com

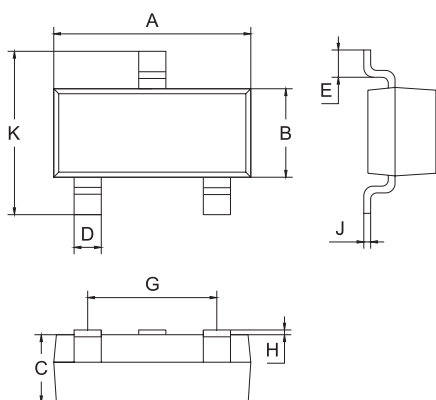


Surface Mount Switching Diode

Typical Characteristics @ $T_A = 25^\circ\text{C}$ unless otherwise specified



Plastic surface mounted package



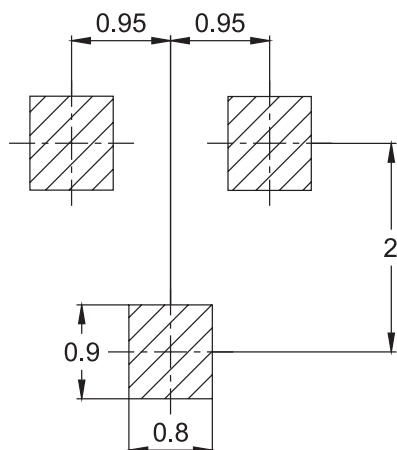
SOT-23		
Dim.	Min.	Max.
A	2.7	3.1
B	1.1	1.5
C	1 Typical	
D	0.4 Typical	
E	0.35	0.48
G	1.8	2
H	0.02	0.1
J	0.1 Typical	
K	2.2	2.6

Dimensions : Millimetres

Surface Mount Switching Diode



Soldering Footprint



Dimensions : Millimetres

Package Information

Part Number	Package	Shipping
BAV23S-7-F	SOT-23	3,000 / Tape & Reel

Part Number Table

Description	Part Number
Surface mount switching diode	BAV23S-7-F

Important Notice : This data sheet and its contents (the "Information") belong to the members of the Premier Farnell group of companies (the "Group") or are licensed to it. No licence is granted for the use of it other than for information purposes in connection with the products to which it relates. No licence of any intellectual property rights is granted. The Information is subject to change without notice and replaces all data sheets previously supplied. The Information supplied is believed to be accurate but the Group assumes no responsibility for its accuracy or completeness, any error in or omission from it or for any use made of it. Users of this data sheet should check for themselves the Information and the suitability of the products for their purpose and not make any assumptions based on information included or omitted. Liability for loss or damage resulting from any reliance on the Information or use of it (including liability resulting from negligence or where the Group was aware of the possibility of such loss or damage arising) is excluded. This will not operate to limit or restrict the Group's liability for death or personal injury resulting from its negligence. Multicomp is the registered trademark of the Group. © Premier Farnell plc 2012.

www.element14.com
www.farnell.com
www.newark.com

