

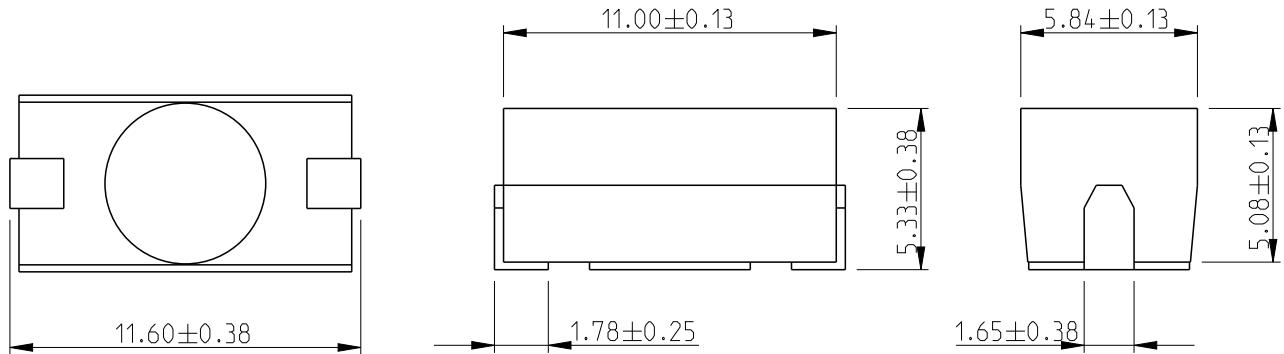
REVISIONS

P	LTR	DESCRIPTION	DATE	DWN	APVD
	BA	NEW RELEASE	10JULY2010	PT	St.P
	BA1	ECR-13-019092	07DEC2013	KR	TN
	BB	ECR-14-002163	17FEB2014	KR	TN

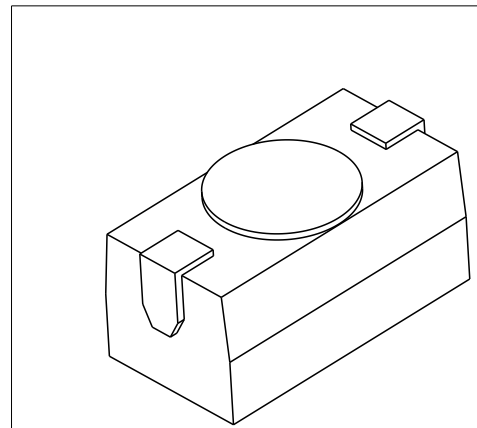
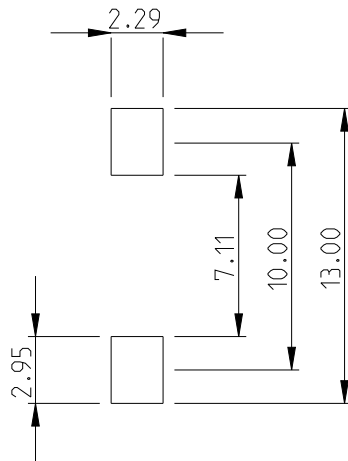
FOR FURTHER INFORMATION SEE DATA SHEET FOR
SERIES S - SMD MOULDED POWER RESISTOR

NOTE:

1. Terminal Finish - Hot Dipped Sn. Min 5µM



RECOMMENDED LAND PATTERN

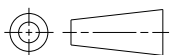


DIMENSIONS:

mm

TOLERANCES UNLESS
OTHERWISE SPECIFIED:

0 PLC	±0.2
1 PLC	±0.1
2 PLC	±
3 PLC	±
4 PLC	±
ANGLES	±5°



DWN PARUSURAM.T 10JULY2010

CHK ALLAN.P 10JULY2010

APVD STEPHEN.P 10JULY2010

PRODUCT SPEC

APPLICATION SPEC

WEIGHT

MATERIAL

FINISH



TE Connectivity

NAME

SMD MOULDED POWER
RESISTOR SERIES SP2

SIZE

CAGE CODE

DRAWING NO

RESTRICTED TO

A 4

00779

C-1624297

-

Customer Drawing

SCALE

4:1

SHEET

1 OF 1

REV

BB

2008

RELEASED FOR PUBLICATION

THIS DRAWING IS UNPUBLISHED.

ALL RIGHTS RESERVED.

BY -

COPYRIGHT 2008