

CR Series

Round Single Pole Specialty Rocker Switches

Features/Benefits

- Round actuator and body
- Nice styling
- Multiple illuminated versions available
- IP65 splash proof rubber boot option

Typical Applications

- Appliances, small and large
- Office equipment
- Computers and peripherals
- Audio/Video equipment
- RoHS compliant



Models Available

Specifications

CONTACT RATING:

UL: 16 AMPS @ 125 VAC, 10 AMPS @ 250 VAC.

VDE μ T85: 16 AMPS @ 125 VAC, 10 AMPS @ 250 VAC.

ELECTRICAL LIFE: 10,000 make and break cycles at full load.

INSULATION RESISTANCE: $10^8 \Omega$ min.

DIELECTRIC STRENGTH: 1,500 VRMS @ sea level.

OPERATING TEMPERATURE: -20°C to + 85°C

Materials

HOUSING AND ACTUATOR: 6/6 nylon (UL94V-2), matte finish.

ILLUMINATED ACTUATOR: Polycarbonate, matte finish.

CENTER CONTACTS: Silver plated, copper alloy.

END CONTACTS: Silver plated AgSnO₂InO₃.

ALL TERMINALS: Silver plated, copper alloy.

NOTE: Specifications and materials listed above are for switches with standard options. For information on specific and custom switches, consult Customer Service Center.

Build-A-Switch

To order, simply select desired option from each category and place in the appropriate box. Available options are shown and described on pages G-83 through G-85. For additional options not shown in catalog, consult Customer Service Center.

<div>Switch Function</div> <div>CR101 SPDT On-None-On</div> <div>CR102 SPST On-None-Off</div>	<div>Actuator</div> <div>J1 Rocker</div> <div>J2* Two-tone rocker</div> <div>J3 Illuminated rocker</div> <div>J4** Circle, illuminated rocker</div> <div>J5 Oval, illuminated rocker</div> <div>JN Paddle, rocker</div> <div>JP** Paddle, illuminated rocker</div>	<div>Actuator Color</div> <div>2 Black</div> <div>1 White</div> <div>3 Red</div> <div>R Red, illuminated</div> <div>A Amber, illuminated</div> <div>G Green, illuminated</div>	<div>Mounting Style/Color</div> <div>S2 Snap-in, black</div> <div>S1 Snap-in, white</div>	<div>Termination</div> <div>15 .187" quick connect</div>	<div>Contact Rating</div> <div>QF Silver</div>	<div>Lamp Rating</div> <div>(NONE) No lamp</div> <div>6 LED</div> <div>7 125 VAC neon</div> <div>8 250 VAC neon</div>
---	--	--	---	--	--	---

- * Refer to table on page 84 for actuator options.
** VDE rating for JP: 10 A @ 125 VAC / 6 A at 250 VAC.

Rocker



G

C&K

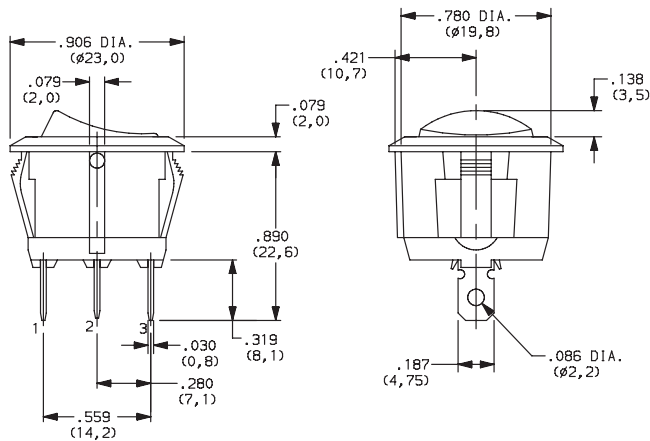
Dimensions are shown: Inches (mm)
Specifications and dimensions subject to change

CR Series Round Single Pole Specialty Rocker Switches

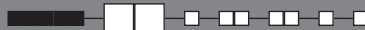
SWITCH FUNCTION



NO. POLES	MODEL NO.	SWITCH FUNCTION			CONNECTED TERMINALS			SCHEMATIC
		Pos. 1	Pos. 2	Pos. 3	Pos. 1	Pos. 2	Pos. 3	
		C&K marking on opposite side			C&K marking on opposite side			
	CR101	ON	NONE	ON	2-3		2-1	
	CR102	ON	NONE	OFF		N/A		
SP								

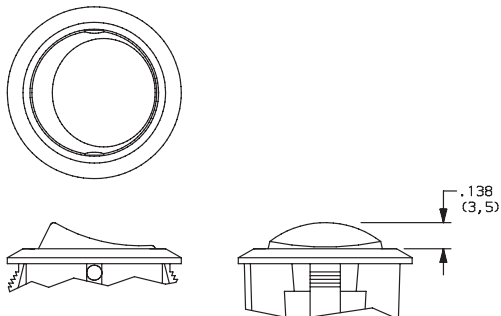


ACTUATOR



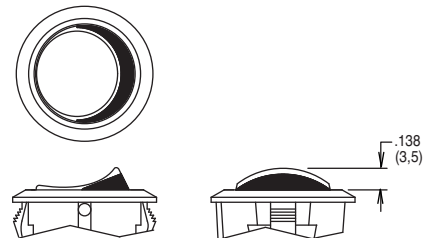
J1 ROCKER

J3 ILLUMINATED ROCKER



NOTE: J3 actuator available with the combination of 7 & 8 lamp ratings and CR102 switch function only.

J2 TWO-TONE ROCKER



Third Angle
Projection

Dimensions are shown: Inches (mm)
Specifications and dimensions subject to change

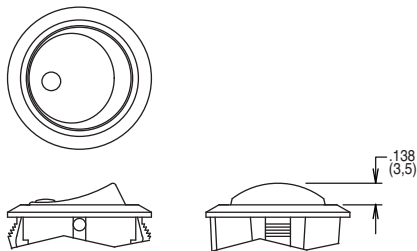
C&K

CR Series

Round Single Pole Specialty Rocker Switches

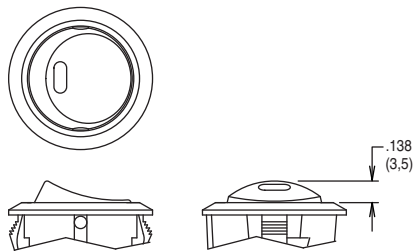
ACTUATOR

J4 CIRCLE, ILLUMINATED ROCKER



NOTE: Available with the combination of CR102 switch function and 7 & 8 lamp ratings only.

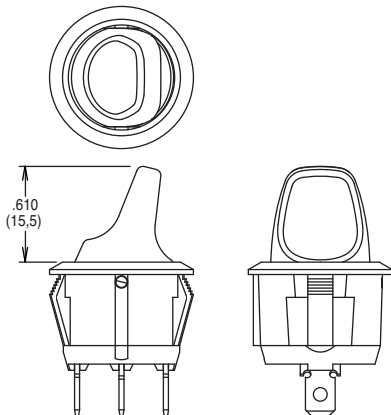
J5 OVAL, ILLUMINATED ROCKER



NOTE: Available with the combination of CR102 switch function and 6 lamp rating only.

JN PADDLE, ROCKER

JP PADDLE, ILLUMINATED ROCKER



NOTE: JP actuator available with the combination of CR102 switch function and 7 & 8 lamp ratings only.

ACTUATOR COLOR

ACTUATOR	OPTION CODE	ACTUATOR COLOR
J1	2	BLACK
	1	WHITE
	3	RED
J3, J4 J5, JP	R	RED, ILLUMINATED
	A	AMBER, ILLUMINATED
	G	GREEN, ILLUMINATED

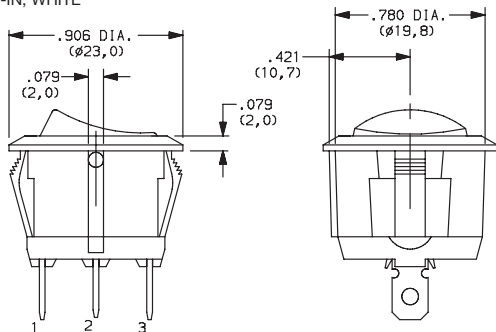
OPTION CODE	ACTUATOR COLOR	
	TOP	BOTTOM
1	WHITE	RED
2	WHITE	BLACK
3	RED	WHITE
4	BLACK	WHITE
5	BLACK	RED

J2 actuator only

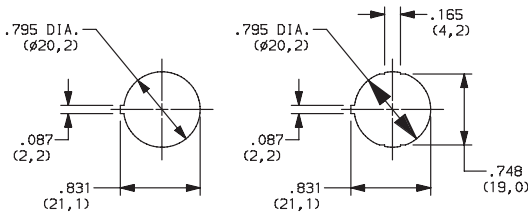
MOUNTING STYLE/COLOR

S2 SNAP-IN, BLACK

S1 SNAP-IN, WHITE



PANEL MOUNTING



Panel thickness:
2.0 - 3.0 mm

Panel thickness:
0.7 - 3.0 mm



Third Angle
Projection

Dimensions are shown: Inches (mm)

Specifications and dimensions subject to change

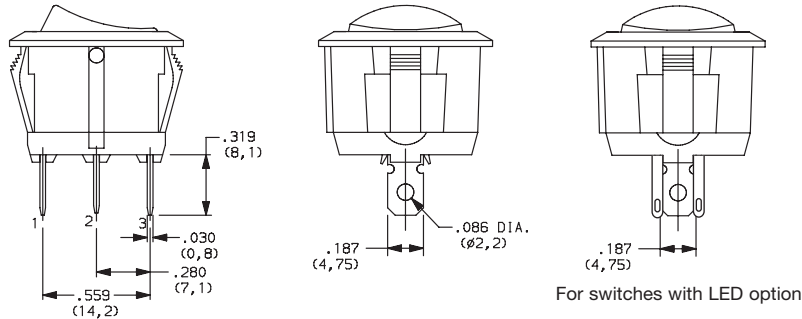
www.ck-components.com

CR Series Round Single Pole Specialty Rocker Switches

TERMINATION



15 .187" QUICK CONNECT



CONTACT MATERIAL



OPTION CODE	CONTACT AND TERMINAL MATERIAL	RATINGS	
		POWER	16 AMPS @ 125 VAC; 10 AMPS @ 250 VAC
QF	SILVER		

* Note: See Technical Data section of this catalog for RoHS compliant and compatible definitions and specifications.

LAMP RATING



(NONE) NO LAMP

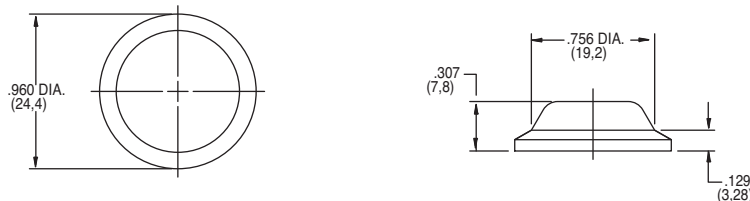
6 LED RATING @ 10 mA $V_f=1.85V$

7 125 VAC 33kΩ NEON

8 250 VAC 150kΩ NEON

ACCESSORIES

377C00000 IP65 SPLASH PROOF RUBBER BOOT



CG Series Single Pole Power Rocker Switches

Features/Benefits

- **Bevelled frame**
- **Illuminated versions available**
- **Easy panel mount installation**

Typical Applications

- ***Computers and peripherals***
- ***Small appliances***
- ***Instrument panels***
- ***Industrial controls***
- ***RoHS compliant***



Specifications

CONTACT RATING:

UL/CSA: 16 AMPS @ 125 VAC, 10 AMPS @ 250 VAC.

VDE μ T85: 10 AMPS @ 250 VAC, 6 AMPS @ 250 VAC.

ELECTRICAL LIFE: 10,000 make and break cycles at full load.

INSULATION RESISTANCE: $10^8 \Omega \text{ min.}$

DIELECTRIC STRENGTH: 1,500 VRMS @ sea level.

OPERATING TEMPERATURE: -20°C to +85°C

Materials

HOUSING AND ACTUATOR: 6/6 nylon (UL94V-2), black, matte finish.

ILLUMINATED ACTUATOR: Polycarbonate, matte finish.

CENTER CONTACTS: Silver plated, copper alloy.

END CONTACTS: Silver plated.

ALL TERMINALS: Silver plated, copper alloy.

NOTE: Specifications and materials listed above are for switches with standard options. For information on specific and custom switches, consult Customer Service Center.

Build-A-Switch

To order, simply select desired option from each category and place in the appropriate box. Available options are shown and described on pages G-87 through G-89. For additional options not shown in catalog, consult Customer Service Center.

Switch Function

- CG101** SPDT On-None-On
- CG102** SPST On-None-Off
- CG103** SPDT On-Off-On
- CG105** SPDT Mom-Off-Mom
- CG12 *** SPST On-None-Off

Actuator

- J1** Rocker
- J2 **** Two-tone rocker
- J3** Illuminated rocker

Actuator Color

- 2** Black
- 1** White
- 3** Red
- R** Red, illuminated
- A** Amber, illuminated
- G** Green, illuminated

Mounting Style/Color

- S2** Snap-in, black
- S1** Snap-in, white

Termination

- 05** .250" quick connect
- 07** Solder lug

Actuator Marking

- (NONE)** No marking
- D** ON-OFF
- H** "O I" - international ON-OFF
- P** "O -" international ON-OFF

Contact Rating

- QF** Silver

Lamp Rating

- (NONE)** No lamp
- 7** 125 VAC neon
- 8** 250 VAC neon

CG12 — for switches with both marking and illumination

* CG12 — for switches with both marking and illumination

** J2 — refer to table on page G-88 for actuator options

Rocker



G



Dimensions are shown: Inches (mm)

Specifications and dimensions subject to change

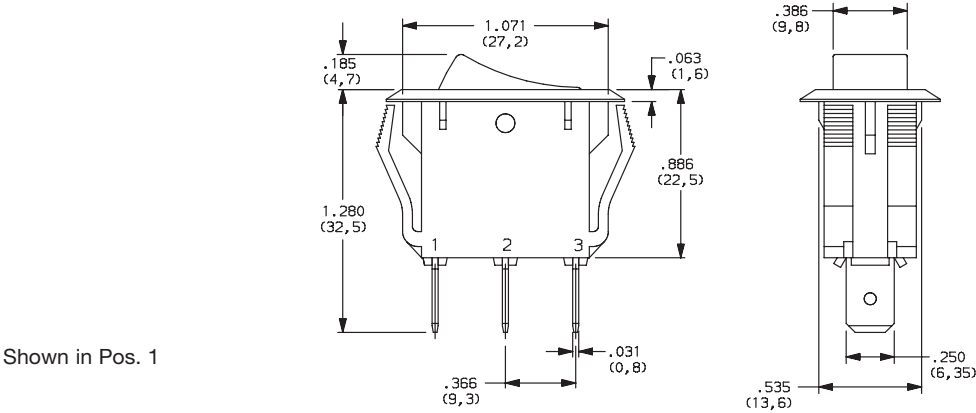
CG Series Single Pole Power Rocker Switches

SWITCH FUNCTION



NO. POLES	MODEL NO.	SWITCH FUNCTION			CONNECTED TERMINALS			SCHEMATIC
		Pos. 1	Pos. 2	Pos. 3	Pos. 1	Pos. 2	Pos. 3	
		C&K marking on opposite side			C&K marking on opposite side			
SP	CG101	ON	NONE	ON	1-2	N/A	2-3	
	CG102	ON	NONE	OFF	1-2		OPEN	
	CG103	ON	OFF	ON	1-2	OPEN	2-3	
	CG105	MOM	OFF	MOM	1-2	OPEN	2-3	
	CG12 *	ON	NONE	OFF	1-2	N/A	OPEN	

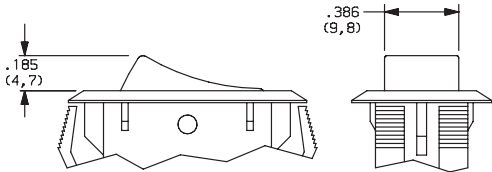
* CG12 - for switches with both marking and illumination



ACTUATOR

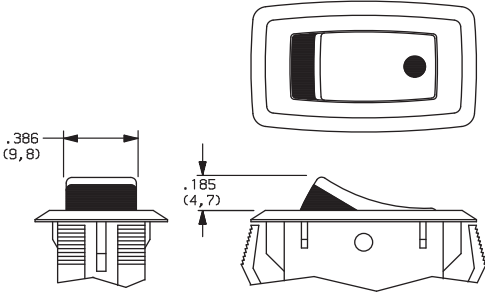


- J1 ROCKER
- J3 ILLUMINATED ROCKER

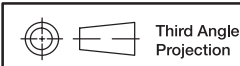


NOTE: J3 actuator available with CG102 switch function only.

- J2 TWO-TONE ROCKER



NOTE: Available with CG102 switch function only.



Dimensions are shown: Inches (mm)
Specifications and dimensions subject to change

www.ck-components.com



CG Series Single Pole Power Rocker Switches

ACTUATOR COLOR

ACTUATOR	OPTION CODE	ACTUATOR COLOR
J1	2	BLACK
	1	WHITE
	3	RED
J3	R	RED, ILLUMINATED
	A	AMBER, ILLUMINATED
	G	GREEN, ILLUMINATED

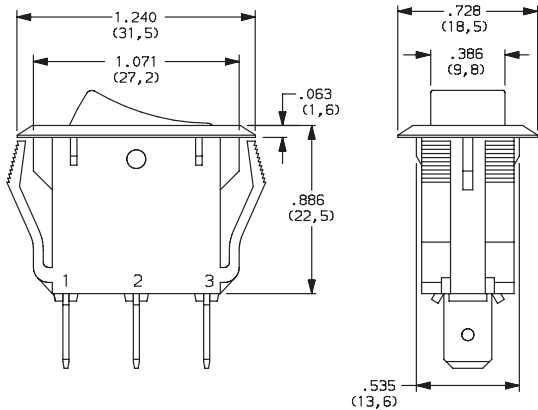
OPTION CODE	ACTUATOR COLOR	
	TOP	BOTTOM
1	WHITE	RED
2	WHITE	BLACK
3	RED	WHITE
4	BLACK	WHITE
5	BLACK	RED

J2 actuator only

MOUNTING STYLE/COLOR

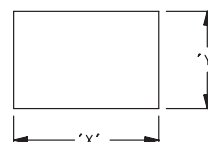
S2 SNAP-IN, BLACK

S1 SNAP-IN, WHITE



Shown in Pos. 1

PANEL MOUNTING

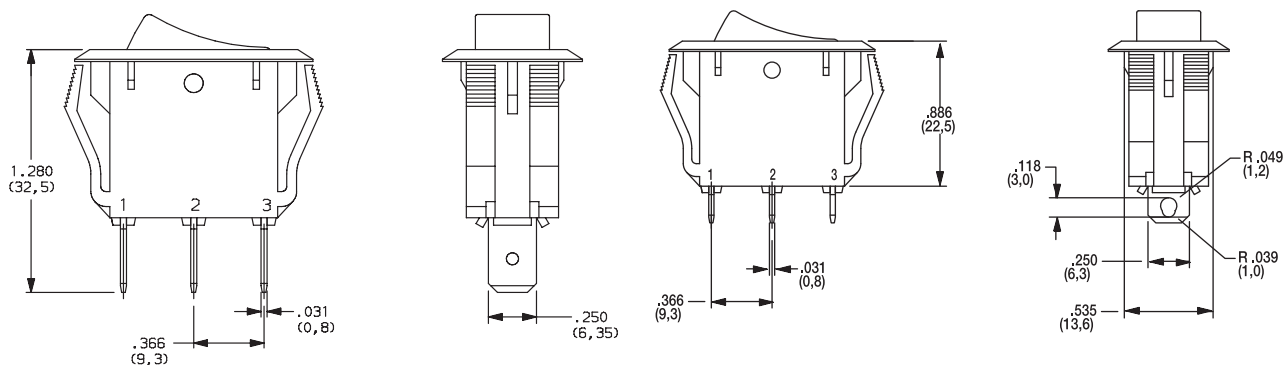


PANEL THICKNESS	"X"	"Y"
0.030-0.049 (0.75-1.25)	1.087-.004 (27.6-0.1)	0.543+.004 (13.8+0.1)
0.049-0.079 (1.25-2.0)	1.094-.004 (27.8-0.1)	0.543+.004 (13.8+0.1)
0.079-0.118 (2.0-3.0)	1.102-.004 (28.0-0.1)	0.543+.004 (13.8+0.1)

TERMINATION

05 .250" QUICK CONNECT

07 SOLDER LUG



Shown in Pos. 1



Dimensions are shown: Inches (mm)

Specifications and dimensions subject to change

CG Series Single Pole Power Rocker Switches

ACTUATOR MARKING

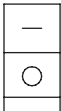
NONE NO MARKING



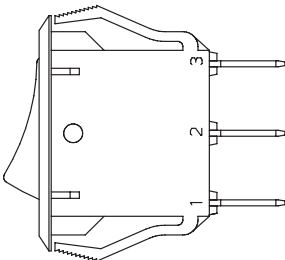
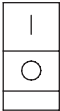
D ON-OFF



H O I



P O -



NOTE: Orientation of actuator marking and terminals.

Shown in Pos. 1

CONTACT MATERIAL

OPTION CODE	CONTACT AND TERMINAL MATERIAL	RATINGS	
QF	SILVER	POWER	16 AMPS @ 125 VAC; 10 AMPS @ 250 VAC (UL/CSA) 10 AMPS @ 250 VAC (VDE) μ T85.

* Note: See Technical Data section of this catalog for RoHS compliant and compatible definitions and specifications.

LAMP RATING

- (NONE)** NO LAMP
- 7** 125 VAC 33k Ω NEON
- 8** 250 VAC 150k Ω NEON

NOTE: Lamp rating for J3 actuator option.



Dimensions are shown: Inches (mm)
Specifications and dimensions subject to change

www.ck-components.com

Mouser Electronics

Authorized Distributor

Click to View Pricing, Inventory, Delivery & Lifecycle Information:

C&K Components:

[CR101J12S215QF](#) [CR101J11S115QF](#) [CR101J11S215QF](#) [CR102J3GS215QF8](#) [CR102J3RS215QF7](#)
[CR102JPRS215QF7](#) [CR102J3AS215QF8](#) [CR102J11S215QF](#) [CR102J12S215QF](#) [CR102J5RS215QF6](#)
[CR102J4RS215QF7](#) [CR102J3GS215QF7](#) [CR102J3RS215QF8](#) [CR102JPRS215QF8](#) [CR102J23S215QF](#)
[CR102J3AS215QF7](#) [CR102J22S215QF](#) [CR102J5AS215QF6](#) [CR102J5GS215QF6](#)