

SPECIFICATION

Material: Boot: APM RUBRGLAS™ (transparent silicone rubber), conforms to A-A-59588, Class III Grade 50, Frame: steel, zinc plated with chromate finish. Screw: SEELSKREW® (self-sealing screws), stainless steel with silicone rubber O-ring.

Temperature Range: HEXSEAL: -94°F to +400°F

Pressure Range: Dust tight and splashproof.

Operational Life: 10,000 actuations (minimum).

Shelf Life: Excess of 25 years.

Resistant to: Salt spray, sunlight, ozone, weather, corona and most acids.

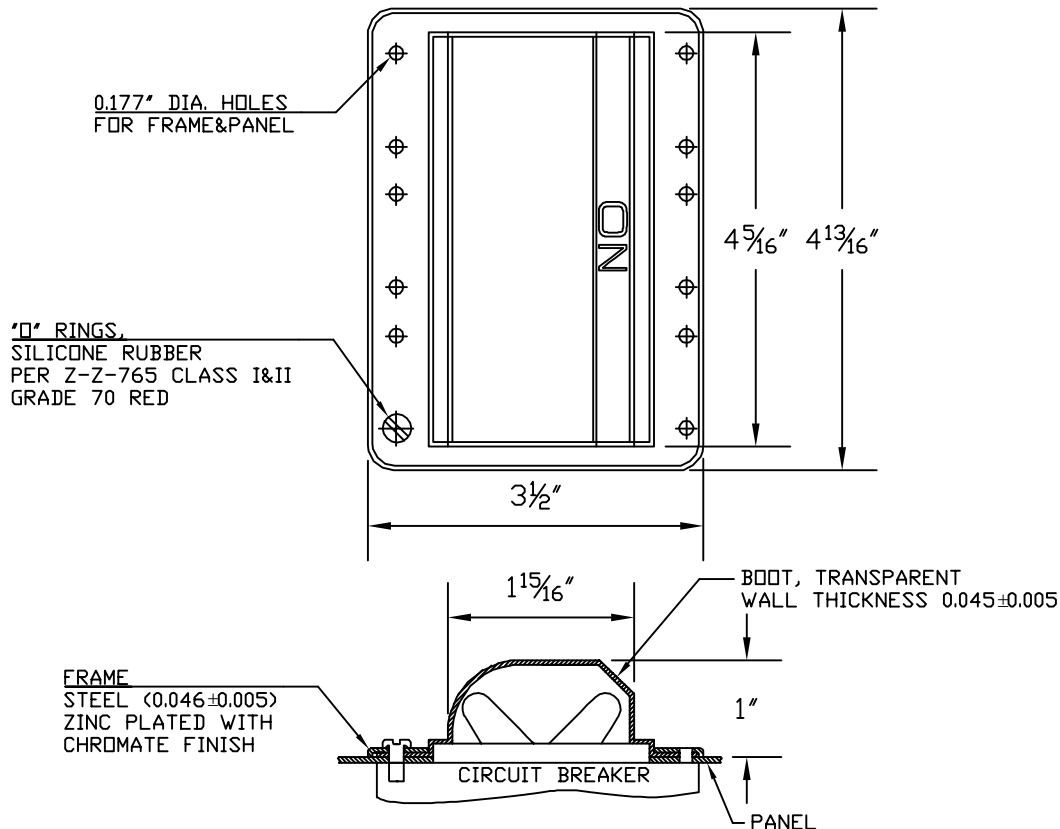
Notes:

1. Mounting screws are supplied in lengths shown unless otherwise specified.

2. New sizes and types of RUBRGLAS-SEELS® are being added regularly. Please request other types and styles as required.

Agency Recognition: Front Panel mounted Circuit Breaker Boots are UL-listed to UL Std. 50, types 1,2,3,12,12K and 13.

Back-of-Panel mounted Circuit Breaker boots are UL-listed to UL Std. 50, type 1, Also meet CSA standards.



NOTES:

ASSEMBLY CONSISTS OF 1 BOOT, MAT'L APM RUBRGLAS®, 1 FRAME

MAT'L C.R.S. ZINC PLATED WITH CHROMATE FINISH, & 12#8-32 APM SEELSKREWS® LENGTH = 3/8 UNLESS OTHERWISE SPECIFIED

TOLERANCES: UNLESS OTHERWISE NOTED ±1/32

E	RUBBER and FRAME MAT'L CHANGED, WALL THICKNESS TOL. 0.010 CHANGED TO 0.005, DELETED TO "DESIGN TO MEET MIL-5423" and DELETED TO SEELSKREW INFORMATION					S. GOK	05.04.09
D	CAD COMPUTER GENERATED						11.13.02
C	REDRAWN					R.C.	09.06.74
REV.	DESCRIPTION					DATE	
MAXIMUM AND MINIMUM MEASUREMENTS ARE STATED DIRECTLY ON EACH DIMENSION.		TITLE:	CIRCUIT BREAKER BOOT, TOGGLE, WIDE ANGLE, TRANSPARENT (3 POLES)		ENG.	M.M.	
					DWN.	J.P.	09.06.74
					CHKD.	J.CELLA	05.04.09
MAT'L: RUBRGLASS ① CONFORMS TO A-A-59588 CL III		APM-HEXSEAL CORPORATION	SCALE	DWG. NO.	HE-1080		
FINISH: GRADE 50 TRANSPARENT			1/2 : 1				

THIS DRAWING COVERS PROPRIETARY ITEM AND IS THE PROPERTY OF THE APM-HEXSEAL CORPORATION.

THIS DRAWING IS NOT TO BE COPIED OR USED WITHOUT THE WRITTEN APPROVAL OF AN OFFICER OF THE APM-HEXSEAL CORPORATION.

Mouser Electronics

Authorized Distributor

Click to View Pricing, Inventory, Delivery & Lifecycle Information:

[APM HEXSEAL:](#)

[HE1080](#)