

# SX-DS-3000WAN

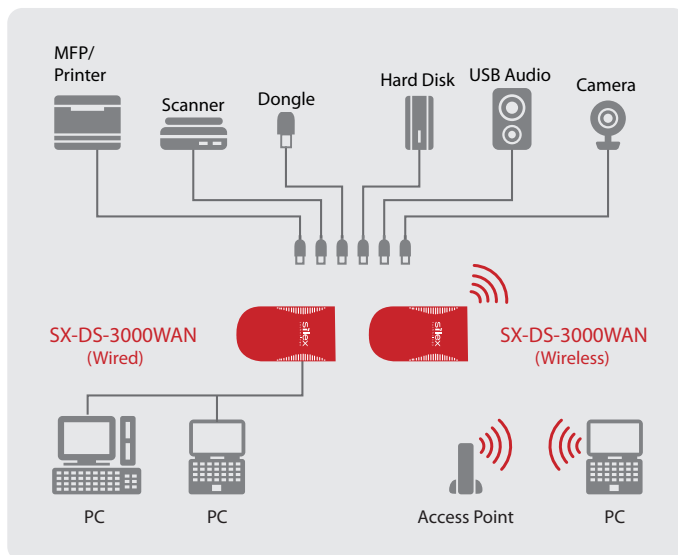
## Dual Band 802.11n Wireless plus Gigabit Ethernet USB Device Server

Easily Connect and Share Virtually any USB Device on a Network



The SX-DS-3000WAN is USB Device Server from Silex supporting dual band 2.4Ghz and 5Ghz 802.11n wireless or Gigabit Ethernet for the network connection. The USB Virtual Link technology from Silex Technology allows virtually any kind of USB device network-capable in the simplest of manners. Printers, scanners, hard drives, dongles, and other USB devices can be used over the network via 2 USB Hi-Speedports with the SX-DS-3000WAN just as though they were connected to the computer.

### Connection example



### Features

- **Dual Band Wireless Versatility**  
Dual band 802.11a/b/g/n wireless connection allows you to connect it anywhere within range of your wireless network, or you can connect it to your Gigabit wired Ethernet network.

- **Fast Network Speeds**  
The 802.11n wireless connection supports up to 300Mbps or the wired Gigabit Ethernet connection supports up to 1000Mbps throughput.\*

\*Theoretical maximum speeds. Actual connection will be slower due to network and interference.

- **Print Server Function**  
Supports standard TCP/IP printing (LPR/IPP/RAW)  
The product supports the general RAW-mode, LPR-mode and IPP-mode network printing protocols. When the product is connected to a printer, the standard Windows print function can be used to print.

### AutoConnect Feature

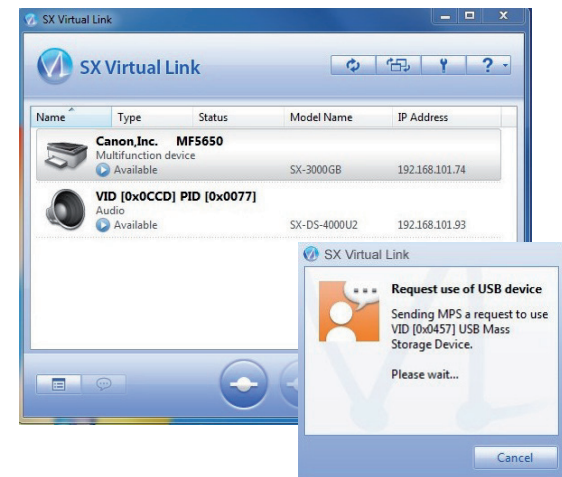
The Printer AutoConnect feature allows multiple computers to easily share USB printer over the network by making an automatic connection to the printer. Then automatically disconnecting after the print job is sent making the device server available to the next user.

### What is SX Virtual Link?

Silex has created Software for Windows or Macintosh computers called SX-Virtual Link which precisely emulates a USB port on each of the computers that want to access the USB device over the network. The computers think that they are communicating with the device via a direct USB connection, but they are actually communicating over the network with a Silex USB Device Server product.

### What is a USB Device Server?

It is a network device that uses Silex USB Virtual Link technology to allow USB to be connected and shared on a network. Thanks to the USB Virtual Link technology from Silex technology, virtually any USB device can be used on a network, just as though they were connected with a USB cable.



The network is searched for the product and the connected USB devices; the search results are shown in an overview on the main screen.

If another user is using a shared USB device, a request for use can be sent. It can also be specified that failure to respond to this request will automatically lead to a disconnection after a timeout. This makes it easy to share any USB device over a network in home and business environments.

# Easily Connect and Share Virtually any USB Device on a Network **SX-DS-3000WAN**

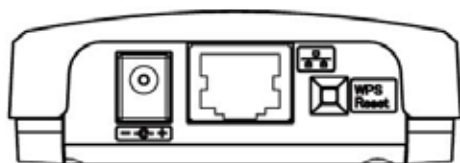
## Features, continued

**With the SX-DS-3000WAN, you can connect** a variety of USB devices over the network, like USB dongles, MP3 players, CD/DVD/Zip drives, USB drives and other storage media, scanners, printers, digital cameras, USB sound cards, USB LCD monitor, telescopes, mixing consoles and many more.

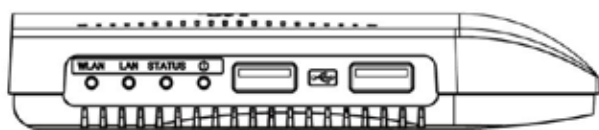
**Virtual environments:** The USB Device Server is compatible with the following virtualization programs and environments: VMware, Citrix, Microsoft Terminal Server and Hyper-V.

**No special drivers or applications** are needed to use the USB devices: The drivers and applications that worked when the USB device is directly connected to the computer will continue to work.

**For manufacturers:** Silex offers manufacturers the USB Virtual Link technology as an OEM product. On the hardware side there is an installation module and on the software there are two powerful SDK systems available to integrate the mature USB Virtual Link technology into any product, such as routers, access points, NAS systems or home gateways.



**Power connection, Gigabit Ethernet connection, WPS/reset button**



**Status LED's and 2 Hi-Speed USB ports with a total of 1000mA of power supply; using an optional USB hub, up to 15 USB connections can be supported.**

## Other USB Device Servers

### SX-3000GB

**USB Device Server with Gigabit support**

- Gigabit Ethernet
- 2x USB 2.0 Hi-Speed-Ports
- 250 MHz CPU



Win Mac

### SX-DS-4000U2

**High Performance Gigabit USB Device Server**

- 10 BASE-T/100 BASE-TX/1000 BASE-T (automatic detection)
- 2x USB 2.0 Hi-Speed Ports
- 800 MHz CPU



Win Mac

## Technical data

Product name	SX-DS-3000WAN
Network interface	10 BASE-T/100 BASE-TX/1000 BASE-T (automatic detection)
Wireless LAN	IEEE802.11a/b/g/n (2T2R) with Built-in antenna
Device interface	2 x USB 2.0 Hi-Speed (type A) ports with a total of 1A of power supply
Supported protocols	TCP / IP
Supported operating systems	Windows 7/8 (32/64bit), Vista (32/64bit), XP, 2000, Windows Server 2008 (32/64bit), Windows Server 2003 (32/64bit). * MacOS X [ PowerPC : Ver 10.3x ~ Ver 10.5x Intel : Ver 10.4.4 ~ Ver 10.8x ] *
Configuration	Configuration utility, Web browser, WPS
External dimensions	126.4mm x 71.5mm x 24.2mm ( ± 2mm)
Weight	105g
Max. power consumption	2.5W (DC5V .5A) up to 7.5W (DC5V 1.5A) including 1A for USB power
Included items	AC adapter, CD-ROM (Configuration Utility, Manual), Setup Guide
Regulatory Compliance	VCCI class B / FCC class B / IC class B / CE class B
Other	Requires SX Virtual Link Version 3.8.0 or later for Windows or Version 3.7.0. for Macintosh

## Dual Band 802.11n wireless USB Device Server



**SX-DS-3000WAN**

## About Silex

Silex Technology America, Inc. is a subsidiary of Silex Technology Inc., a 35-year developer and leading network technology company specializing in network and wireless technology, providing hardware, software, embedded modules and turnkey connectivity products. Silex Technology has regional offices for sales, marketing and development in Japan, United States and Germany. Silex Technology is integrated vertically to support customers from design to production, maintaining the highest quality standards.



JQA-QMA2667  
silex technology, Inc.



JQA-EM3813  
silex technology, Inc.  
Design & Manufacturing Center

Silex Technology is a registered trademark of silex technology, Inc. Other products or trade names are the registered trademark of their owners. Changes to technical specifications and data may be made with no prior notice. © 2012 Silex Technology America, Inc. All rights reserved.

## Global marketing and support locations:

**USA**  
Silex Technology America, Inc.  
+1-801-748-1199  
www.silexamerica.com  
> contact@silexamerica.com

**Japan**  
Silex Technology, Inc.  
+81-774-98-3782  
www.silex.jp  
> support@silex.jp

**Europe**  
Silex Technology Europe GmbH  
+49-2151-65009-10  
www.silexeurope.com  
> contact@silexeurope.com



# Mouser Electronics

Authorized Distributor

Click to View Pricing, Inventory, Delivery & Lifecycle Information:

[Silex Technology:](#)

[SX-DS-3000WAN](#)