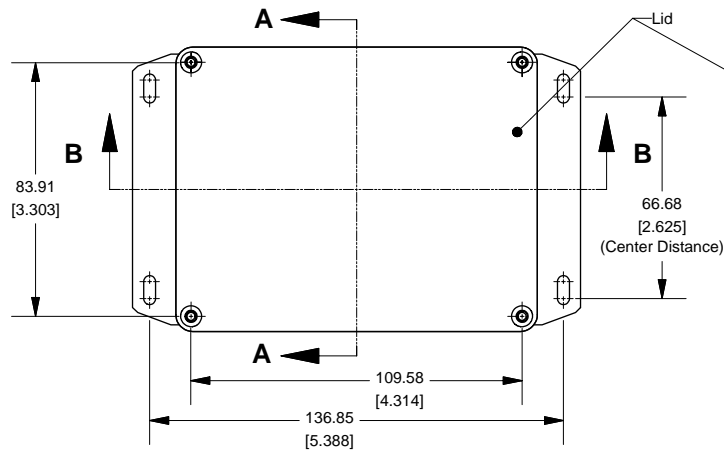
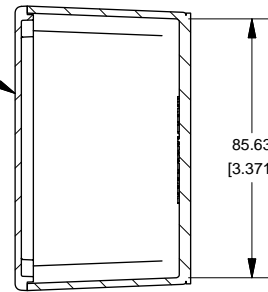
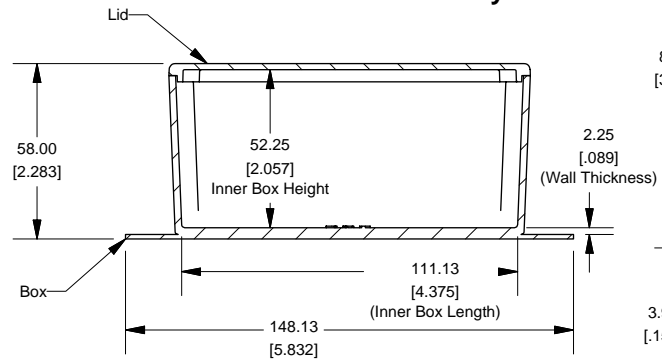
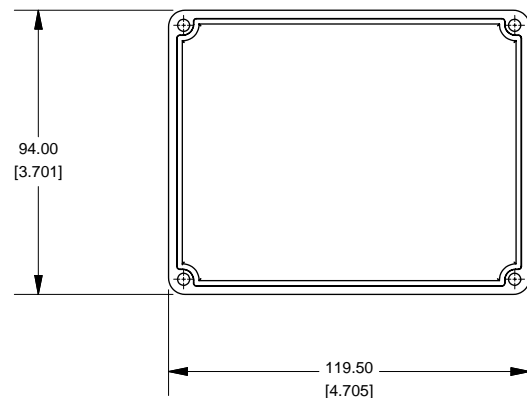


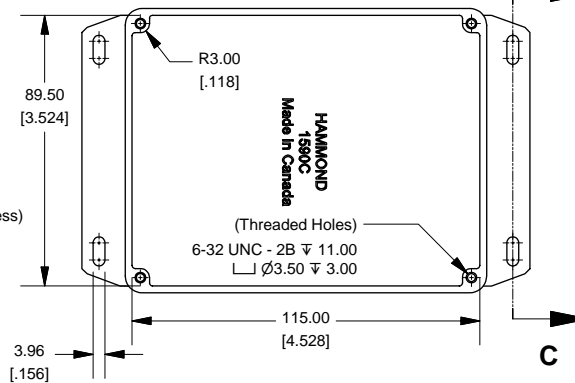
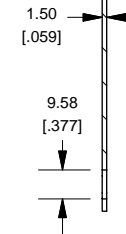
Top View of Assembly

SECTION A-A
End View of AssemblySECTION B-B
Side View of Assembly

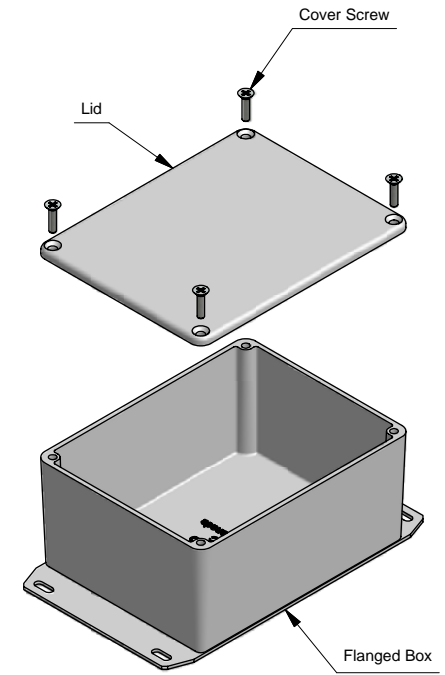
Lid



Top View Looking Inside Box

SECTION C-C
Side of Slot

Series 1590C (Flanged Box)



NOTE

Purchased assembly includes box, lid and 4 cover screws.
Box and lid are made from Diecast Aluminum Alloy (alloy type 360.1).
Flanges are made from Stamped Aluminum 5052-H32

PART NUMBERS

1590CF Enclosure	
Unfinished	1590CF
Black Textured Powder Paint	1590CFBK
1590CF Liquid Resistant Enclosure (Silicon Factory Installed Gasket)	
Unfinished	1590WCF
Black Textured Powder Paint	1590WCFBK
ACCESSORIES	
Unfinished	
Cover Screws (Pkg 100) [6-32 x 1/2" Nickel Plated Screws]	1590MS100
Black Textured Powder Paint	
Cover Screws (Pkg 50) [6-32 x 1/2" Stainless Steel Black Screws]	1590MS50BK



www.hammondmfg.com