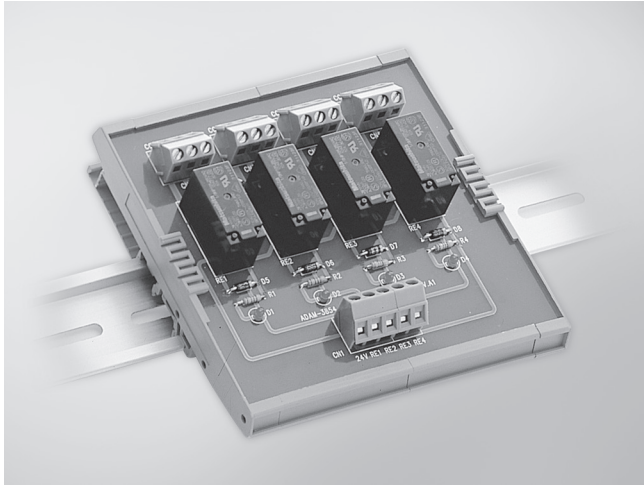


# ADAM-3854

# ADAM-3864

## 4-ch Power Relay Module

## 4-ch Solid State Digital I/O Module Carrier Backplane



ADAM-3854

### Features

- High power relays can handle up to 5 A @ 250 V<sub>AC</sub> and 5 A @ 30 V<sub>DC</sub>
- 4 single-pole double-throw (SPDT) relays
- Industrial screw terminals for easy output wiring
- LED status indicators
- Onboard varistor protects relay contact points
- DIN-rail mounting

### Specifications

#### I/O

- **Channels** 4
- **Contact Rating** 250 V<sub>AC</sub> @ 5 A  
30 V<sub>DC</sub> @ 5 A
- **Contact Resistance** 100 mΩ
- **Operation Time** 15 ms max.
- **Relay Type** SPDT (Form C)
- **Release Time** 5 ms max.
- **Life Expectancy** 1.7 x 10<sup>5</sup> at rated load

#### Varistor

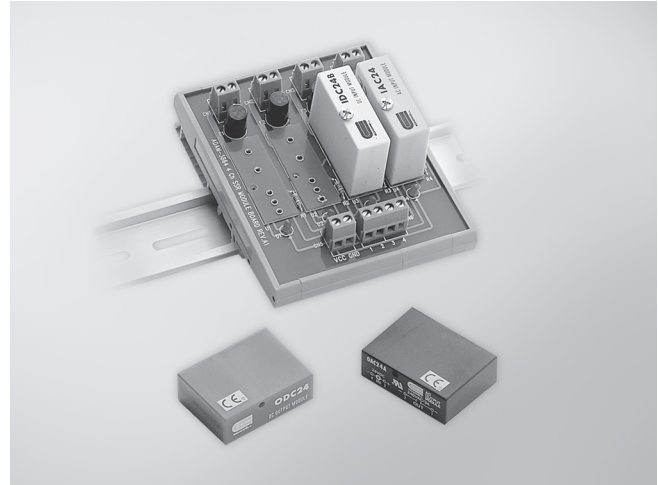
- **Clamping Voltage** 760 V (10 A)
- **Max. Applied Voltage** 300 V<sub>RMS</sub>
- **Max. Peak Current** 1,200 A for 8 ms
- **Varistor Voltage** 470 V (current = 1 mA)

#### General

- **Connectors** Screw terminals
- **Dimensions (L x W x H)** 112.5 x 118.4 x 46 mm (4.43" x 4.66" x 1.81")
- **LED Indicators** Status displayed for each relay
- **Mounting** DIN-rail
- **Power Consumption** 2.2 W
- **Power Input** 24 V<sub>DC</sub>

### Ordering Information

- **ADAM-3854** 4-ch DIN-rail Power Relay Module



ADAM-3864

### Features

- 2,500 V<sub>RMS</sub> optical isolation
- LED status indicators
- Onboard fuse protection
- DIN-rail mounting

### Specifications

#### Input Modules

##### Field Side:

- **Input On/Off Voltage** IAC24A series: 180 ~ 280 V/80 V<sub>RMS</sub>  
Range IDC24B series: 3 ~ 32 V/1 V<sub>DC</sub>
- **Input Resistance** IAC24A series: 44 kΩ  
IDC24B series: 1.5 kΩ

##### Logic Side:

- **Breakdown Voltage** 30 V<sub>DC</sub>
- **Output Current** 100 mA max.
- **Output Voltage Drop** 0.4 V max.
- **Supply Current** 12 mA max.
- **Supply Voltage** 24 V<sub>DC</sub>

#### Output Modules

##### Field Side:

- **Contact Voltage Drop** 1.6 V max.
- **Current Rating** 3 A max. (@ 25°C)

##### Logic Side:

- **Input Resistance** 220 Ω
- **Supply Current** 12 mA max.
- **Supply Voltage** 24 V

#### General

- **Dimensions (L x H x W)** 118.4 x 90 x 59 mm (4.66" x 3.54" x 2.32")
- **Mounting** DIN-rail

### Ordering Information

- **ADAM-3864** 4-ch Solid State Module Carrier Backplane
- **OAC24A** AC Output Module (24-280 V<sub>AC</sub>, 3 A)
- **ODC24** DC Output Module (5-60 V<sub>DC</sub>, 3 A)
- **PCLM-ODC5** Single Piece DC SSR Module (60 V<sub>DC</sub>, 3 A)
- **IAC24A** AC Input Module (180-280 V<sub>AC</sub>)
- **IDC24B** DC Input Module (3-32 V<sub>DC</sub>)

# Mouser Electronics

Authorized Distributor

Click to View Pricing, Inventory, Delivery & Lifecycle Information:

[Advantech:](#)

[ADAM-3854-AE](#) [ADAM-3864-AE](#)