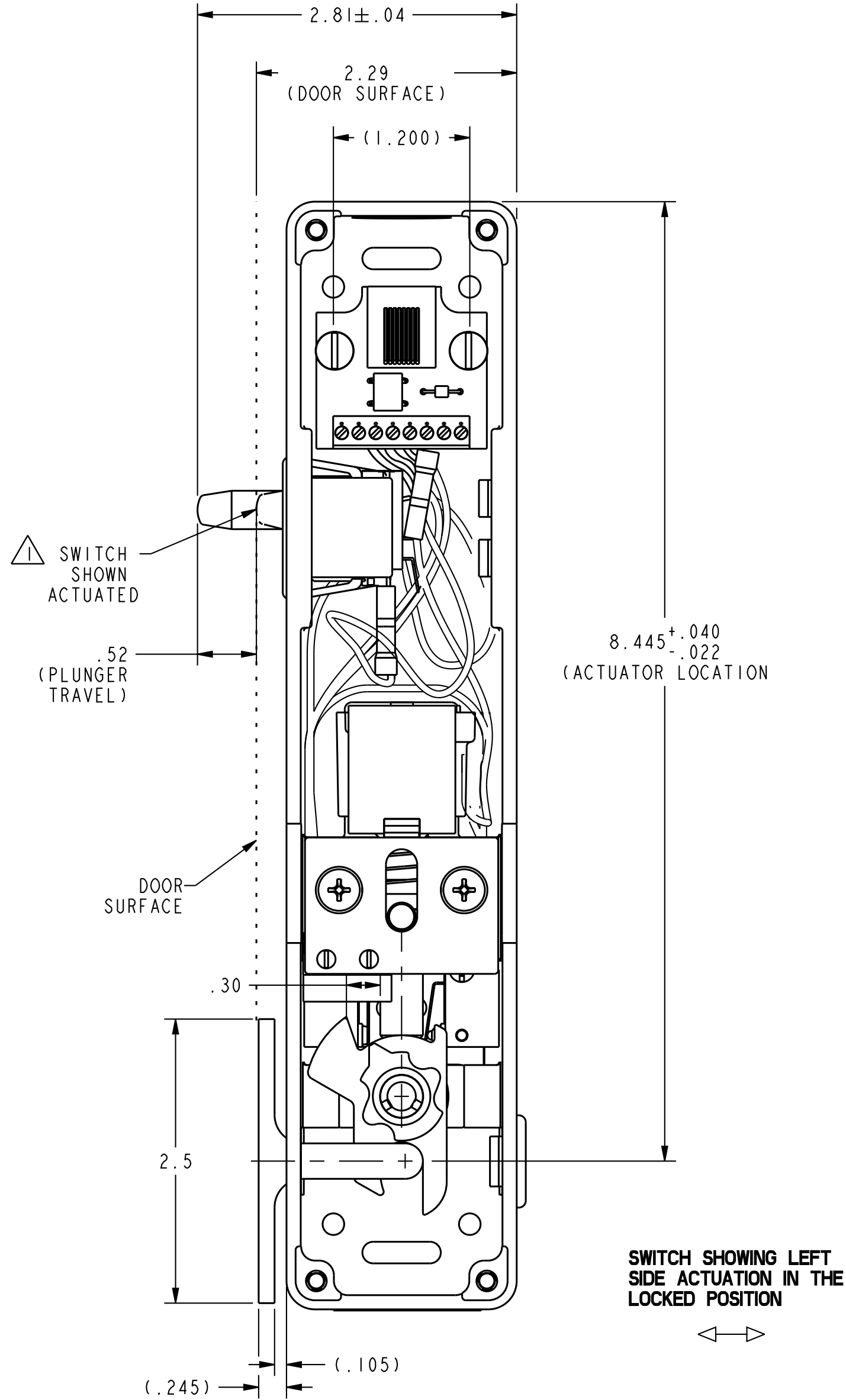
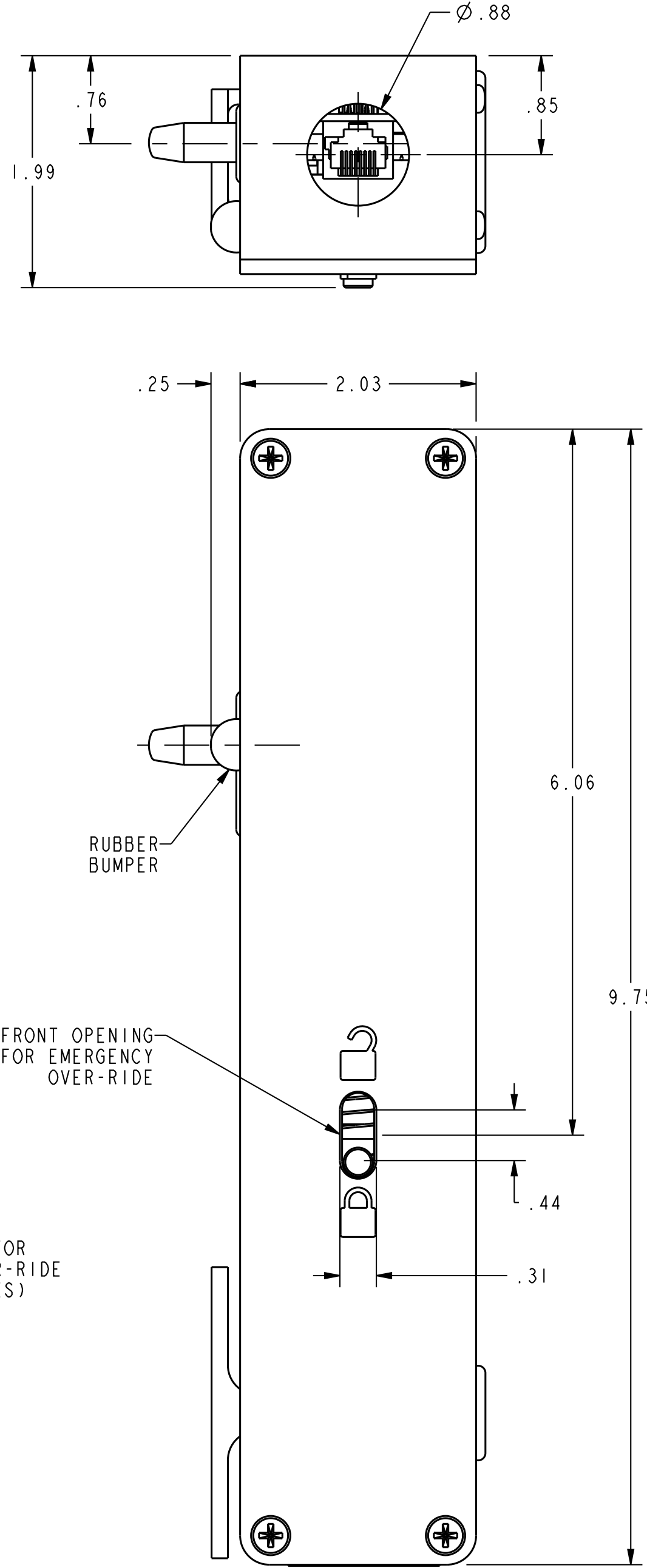
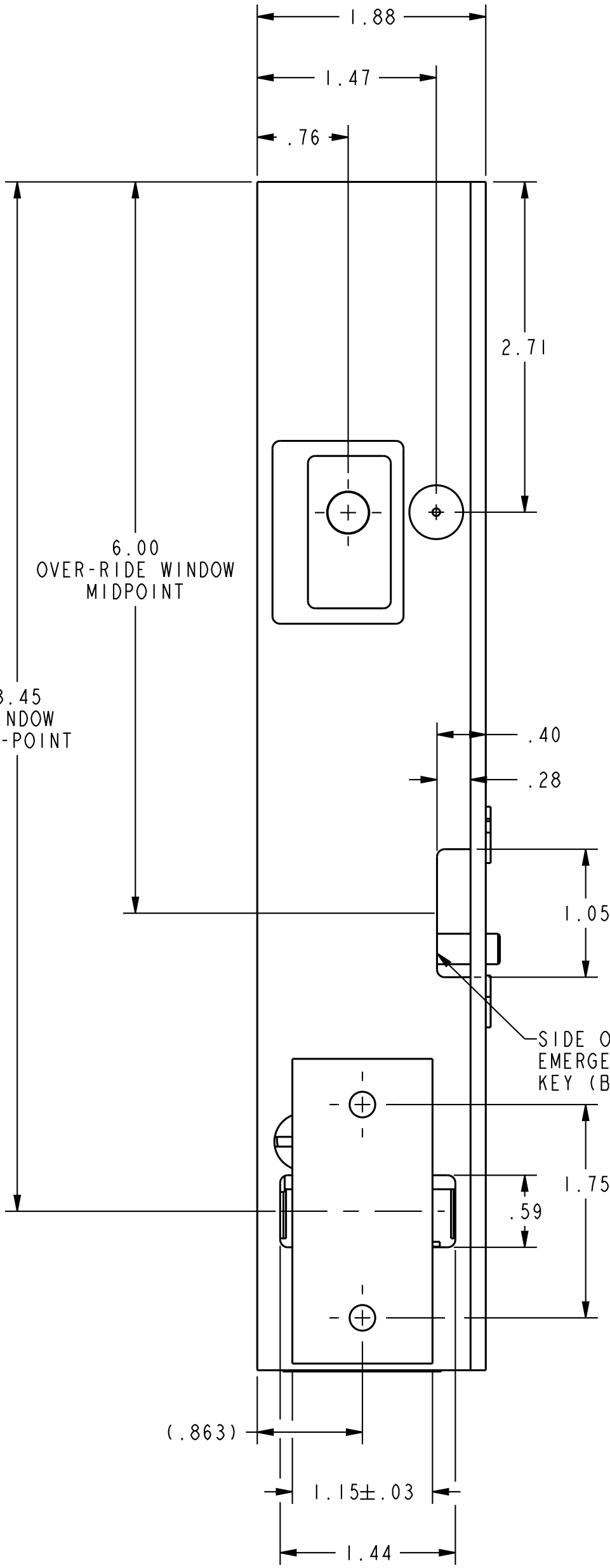
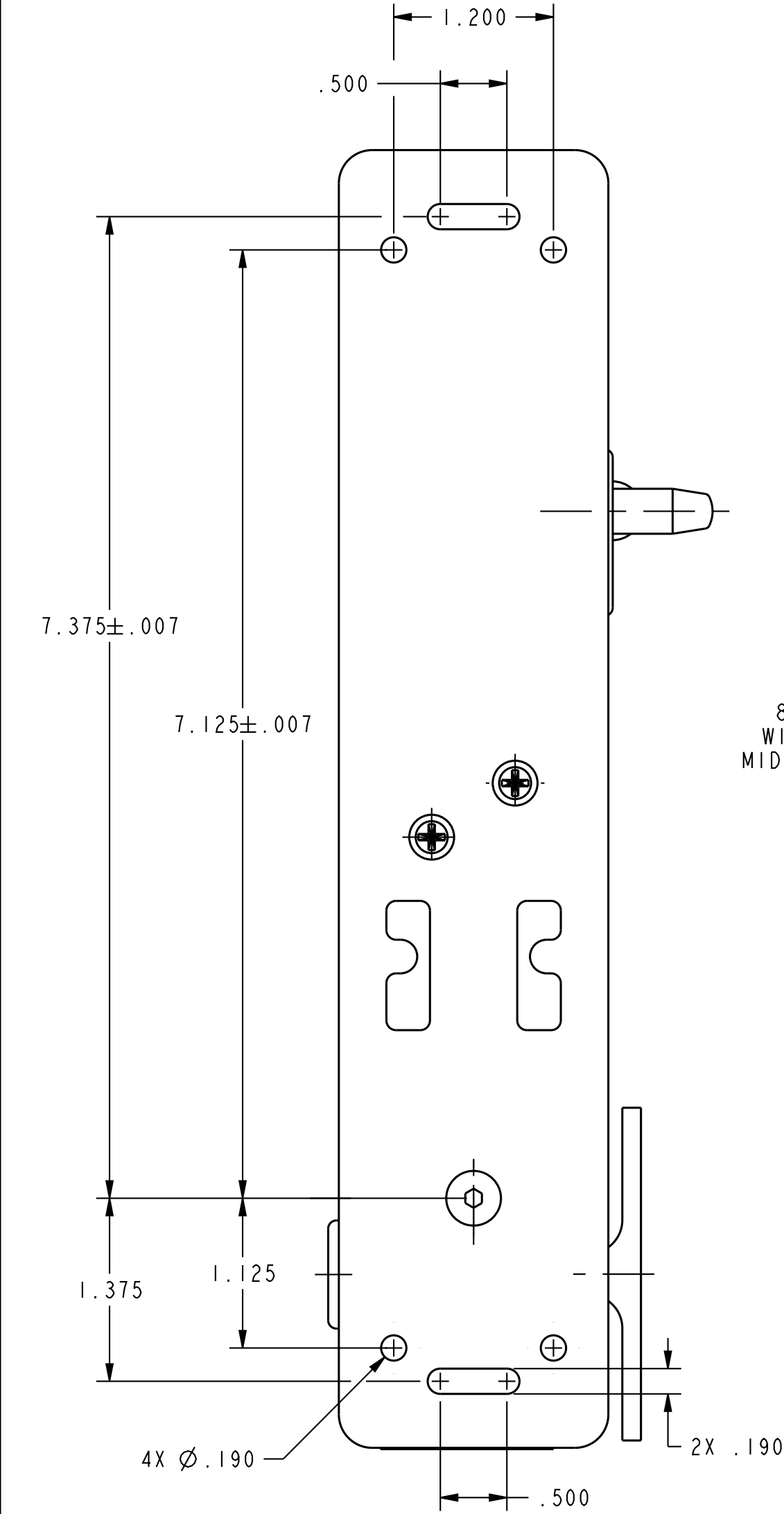
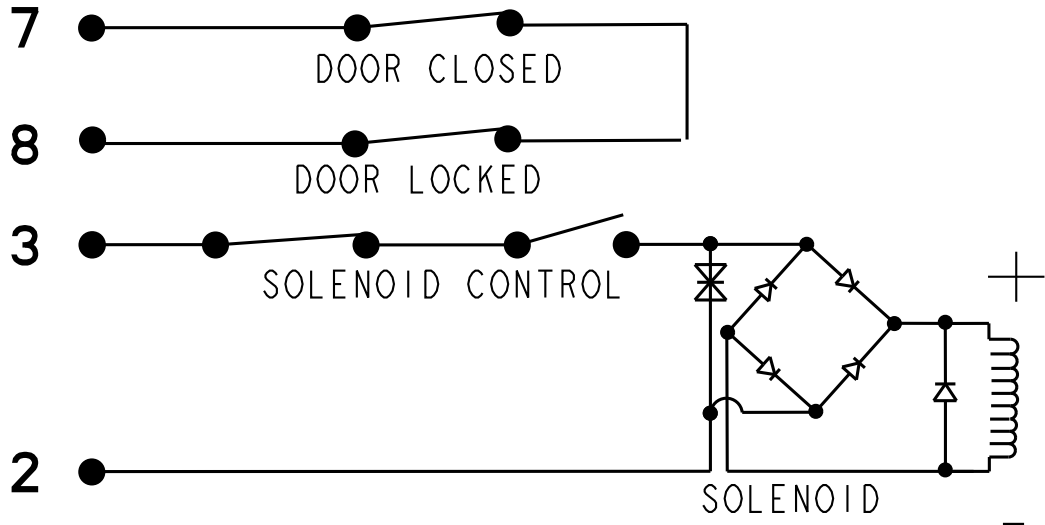


PART NUMBER
CDILBS2W



REVISION HISTORY					
REV	DOCUMENT	DESCRIPTION	CHG'D BY	DATE	APPROVED
A	0075412	RELEASE PER ECO	NMN	2012-12-12	K. BALAJI

ELECTRICAL SCHEMATIC



APPROVALS			
APPROVALS COVERAGE	UL104/ASME17.1/CSA B44.1 FOR COMMERCIAL USE		
ELECTRICAL RATINGS			
VOLTAGE	24 VAC	24 VDC	
CURRENT	0.35A, 60Hz	0.2A	
ENVIRONMENTAL			
OPERATING TEMPERATURE	+4° TO +38°C (+40° TO +100°F)		
STORAGE TEMPERATURE	-40° TO 60° C (-40° TO +140°F)		
MATERIAL OF CONSTRUCTION			
ACTUATOR KEY	INVESTMENT CAST STAINLESS STEEL WITH POWDER COAT FINISH WHITE COLOR		
CAM	INVESTMENT CAST STAINLESS STEEL		
COVER	DIE CAST ZINC WITH POWDER COAT FINISH WHITE COLOR		
HOUSING	DIE CAST ZINC WITH POWDER COAT FINISH WHITE COLOR		

UNLESS OTHERWISE SPECIFIED DIMENSIONS ARE IN INCHES DECIMAL TOL		THIRD ANGLE PROJECTION		Honeywell			
NO PLACE --- ±.400 1 PLACE --- ±.030 2 PLACE --- ±.010 3 PLACE --- ±.005 ANGULAR TOL - ±2° CHAMFER - ±3°				TITLE			
MATERIAL		SIZE		CAGE CODE		DWG NO	
-		D		-		CDILBS2W	
FINISH		SCALE		REF. WT.		SHEET	
-		1 : 1		-		1 of 1	
APPLICABLE DOCUMENTS: ASME Y14.100-2004 ASME Y14.5-2009		DRW: K. NAVEEN		2012-12-05		2012-12-05	
COMPUTER GENERATED DRAWING: PRO/ENGINEER		RDE: K. BALAJI		2012-12-05		2012-12-05	
		CHK: K. BALAJI		2012-12-05		2012-12-05	

HONEYWELL CONFIDENTIAL
THIS DOCUMENT CONTAINS PROPRIETARY
INFORMATION AND SUCH INFORMATION MAY
NOT BE DISCLOSED TO OTHERS FOR ANY
PURPOSE, NOR USED FOR MANUFACTURING
PURPOSES WITHOUT WRITTEN PERMISSION
FROM HONEYWELL